

G. moll
 Sonata
 al
 Cembalo obbligato
 e
 Flauto traverso
 composta
 da
 Gov. Seb. Bach.



in Cembalo & Flauto.

orig. moll.

Pte. 6



(Rusts Nachlass.)

e

Trio

Cembalo

The first system of handwritten musical notation for a Trio for Cembalo. It consists of two staves. The upper staff is in treble clef with a key signature of one flat (B-flat) and a common time signature (C). The lower staff is in bass clef with the same key signature and time signature. The music features a complex, flowing melodic line in the upper staff and a more rhythmic, accompanimental line in the lower staff.

The second system of handwritten musical notation. It continues the piece with two staves in treble and bass clefs, maintaining the one-flat key signature and common time. The upper staff shows intricate melodic patterns, while the lower staff provides harmonic support.

The third system of handwritten musical notation. The two staves continue the musical development. The upper staff features a series of sixteenth-note passages, and the lower staff has a steady, rhythmic accompaniment.

The fourth system of handwritten musical notation. The upper staff contains dense, rapid melodic runs, and the lower staff continues with a consistent accompaniment.

The fifth system of handwritten musical notation. The piece progresses with two staves in treble and bass clefs, showing a continuation of the melodic and rhythmic themes.

The sixth system of handwritten musical notation. The upper staff features a complex melodic line with many beamed notes, and the lower staff provides a steady accompaniment.

The seventh system of handwritten musical notation. The final system on this page shows the continuation of the musical piece with two staves in treble and bass clefs.

Handwritten musical notation on two staves. The top staff uses a treble clef and the bottom staff uses a bass clef. The key signature is one flat (B-flat). The music consists of eighth and sixteenth notes, with some triplets indicated by a '3' above the notes. The notation is dense and characteristic of 18th-century manuscript style.

Handwritten musical notation on two staves, continuing the piece. The notation remains consistent with the previous system, featuring treble and bass clefs, a one-flat key signature, and complex rhythmic patterns.

Handwritten musical notation on two staves. This system shows more intricate rhythmic structures, including sixteenth-note runs and complex phrasing. The clefs and key signature remain the same.

Handwritten musical notation on two staves. This system features a variety of note values and rests, with some longer note values in the bass line. The notation is clear and well-organized.

Handwritten musical notation on two staves. This system includes some slurs and dynamic markings, such as 'f' (forte) and 'p' (piano). The rhythmic complexity continues.

Handwritten musical notation on two staves. A prominent triplet is visible in the upper staff, marked with a '3' above the notes. The lower staff provides a steady accompaniment.

Handwritten musical notation on two staves, concluding the page with a final cadence. The notation is clear and well-organized, ending with a double bar line.



Handwritten musical notation on two staves. The top staff is in treble clef and the bottom in bass clef. Both are in 6/8 time. The music features a melodic line with eighth and sixteenth notes, and a bass line with a steady eighth-note accompaniment.

Handwritten musical notation on two staves. The top staff is in treble clef and the bottom in bass clef. Both are in 6/8 time. The music continues with similar melodic and rhythmic patterns, including some triplet markings.

Handwritten musical notation on two staves. The top staff is in treble clef and the bottom in bass clef. Both are in 6/8 time. The music features a melodic line with eighth and sixteenth notes, and a bass line with a steady eighth-note accompaniment.

Handwritten musical notation on two staves. The top staff is in treble clef and the bottom in bass clef. Both are in 6/8 time. The music continues with similar melodic and rhythmic patterns, including some triplet markings.

Handwritten musical notation on two staves. The top staff is in treble clef and the bottom in bass clef. Both are in 6/8 time. The music features a melodic line with eighth and sixteenth notes, and a bass line with a steady eighth-note accompaniment.

Handwritten musical notation on two staves. The top staff is in treble clef and the bottom in bass clef. Both are in 6/8 time. The music continues with similar melodic and rhythmic patterns, including some triplet markings.

Handwritten musical notation on two staves. The top staff is in treble clef and the bottom in bass clef. Both are in 6/8 time. The music features a melodic line with eighth and sixteenth notes, and a bass line with a steady eighth-note accompaniment.

Handwritten musical notation for the first system, featuring treble and bass staves with notes and rests.

Handwritten musical notation for the second system, featuring treble and bass staves with notes and rests.

Handwritten musical notation for the third system, featuring treble and bass staves with notes and rests.

Siciliano

Handwritten musical notation for the fourth system, featuring treble and bass staves with notes and rests.

Handwritten musical notation for the fifth system, featuring treble and bass staves with notes and rests.

Handwritten musical notation for the sixth system, featuring treble and bass staves with notes and rests.

Handwritten musical notation for the seventh system, featuring treble and bass staves with notes and rests.

Presto

Handwritten musical notation for the first system, featuring a treble clef and a bass clef with a 2/4 time signature. The music begins with a series of rests in the treble staff, followed by a melodic line in the bass staff.

Handwritten musical notation for the second system, showing more complex rhythmic patterns in both staves. The treble staff contains a series of eighth notes, while the bass staff has a more varied rhythmic accompaniment.

Handwritten musical notation for the third system, characterized by dense sixteenth-note passages in the treble staff. The bass staff continues with a steady accompaniment.

Handwritten musical notation for the fourth system, featuring a mix of eighth and sixteenth notes in both staves. The treble staff has a more active melodic line.

Handwritten musical notation for the fifth system, showing a continuation of the rhythmic complexity. The treble staff features a series of sixteenth-note runs.

Handwritten musical notation for the sixth system, with a focus on melodic development in the treble staff. The bass staff provides a consistent harmonic support.

Handwritten musical notation for the seventh system, ending with a final cadence in the bass staff. The treble staff concludes with a few final notes.

Handwritten musical notation on two staves. The top staff is in treble clef and the bottom staff is in bass clef. Both are in a key signature of one flat (B-flat). The music consists of several measures of notes, including quarter and eighth notes, and rests.

Handwritten musical notation on two staves. The top staff is in treble clef and the bottom staff is in bass clef. Both are in a key signature of one flat (B-flat). The music consists of several measures of notes, including quarter and eighth notes, and rests.

Handwritten musical notation on two staves. The top staff is in treble clef and the bottom staff is in bass clef. Both are in a key signature of one flat (B-flat). The music consists of several measures of notes, including quarter and eighth notes, and rests.

Handwritten musical notation on two staves. The top staff is in treble clef and the bottom staff is in bass clef. Both are in a key signature of one flat (B-flat). The music consists of several measures of notes, including quarter and eighth notes, and rests.

Handwritten musical notation on two staves. The top staff is in treble clef and the bottom staff is in bass clef. Both are in a key signature of one flat (B-flat). The music consists of several measures of notes, including quarter and eighth notes, and rests.

Handwritten musical notation on two staves. The top staff is in treble clef and the bottom staff is in bass clef. Both are in a key signature of one flat (B-flat). The music consists of several measures of notes, including quarter and eighth notes, and rests.

Handwritten musical notation on two staves. The top staff is in treble clef and the bottom staff is in bass clef. Both are in a key signature of one flat (B-flat). The music consists of several measures of notes, including quarter and eighth notes, and rests.

Handwritten musical notation on two staves. The top staff contains a melodic line with various note values and rests. The bottom staff contains a bass line with similar rhythmic patterns. The notation is in a historical style, possibly 18th or 19th century.

Handwritten musical notation on two staves. The top staff features a melodic line with some slurs and dynamic markings. The bottom staff provides a corresponding bass line. The paper shows signs of age and wear.

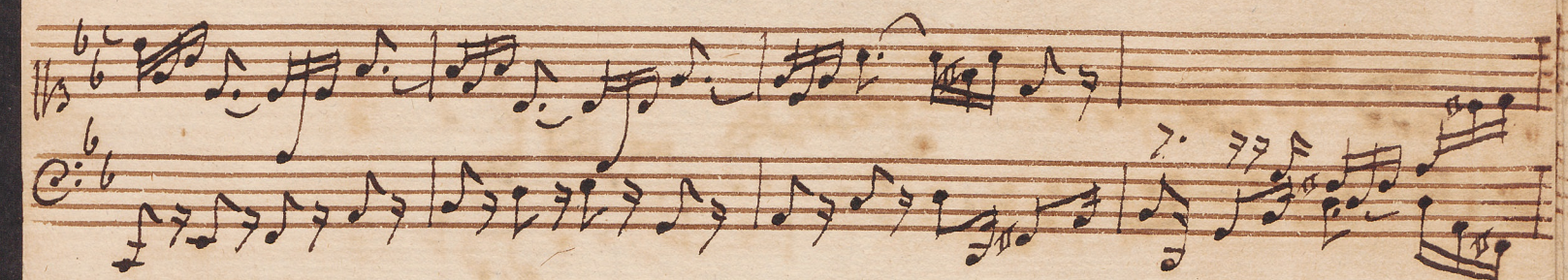
Handwritten musical notation on two staves. The top staff has a melodic line with some complex rhythmic figures. The bottom staff contains a bass line with a steady rhythmic accompaniment.

Handwritten musical notation on two staves. The top staff shows a melodic line with some grace notes and slurs. The bottom staff contains a bass line with a consistent rhythmic pattern.

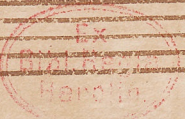
Handwritten musical notation on two staves. The top staff features a melodic line with some slurs and dynamic markings. The bottom staff provides a corresponding bass line. The notation is in a historical style, possibly 18th or 19th century.

Handwritten musical notation on two staves. The top staff has a melodic line with some complex rhythmic figures. The bottom staff contains a bass line with a steady rhythmic accompaniment. The notation ends with a double bar line and repeat dots.

Valli



Handwritten musical notation on two staves. The top staff begins with a treble clef, a key signature of one sharp (F#), and a 6/8 time signature. The bottom staff begins with a bass clef and a 6/8 time signature. The notation includes various note values, rests, and bar lines.



A series of approximately 20 empty musical staves, each consisting of five horizontal lines, arranged vertically on the page.

فانما هو الذي كان في
الذي كان في