

# KARL DITTERS VON DITTERSDORF

## Sinfonische Konzertante

für Kontrabaß und Bratsche

## Symphony concertante

for Double-bass and Viola

mit Begleitung v. Streichorchester, 2 Oboen u. 2 Hörnern

with accompaniment of string orchestra, 2 Oboes and 2 Horns

Zum ersten Male herausgegeben v. Prof. Dr. Wilhelm Altmann

Edited for the first time by Prof. Dr. Wilhelm Altmann

### Horn II in D

### I. Allegro

*Tutti* *f* 1 10 *Solo* 3 20 7 1 30 1 1 1 *ff* 40 *Solo* 1 *Tutti* 50 *Solo* 7 60 10 70 *Tutti* 1 1 80 *Solo* 6 90 3 1 1 1 100 1 *p* *Tutti* *f* *Solo* 3 110 1 *Tutti* *f* 120

EDWIN F. KALMUS & CO., INC.

Publishers of Music  
Boca Raton, Florida

# Horn II in D

3

II. Andantino tacet

III. Menuetto

Musical score for Horn II in D, Menuetto section. The score consists of three staves. The first staff begins with a treble clef and a key signature of one sharp (F#). The second staff begins with a treble clef and a key signature of one sharp. The third staff begins with a treble clef and a key signature of one sharp. The score includes measures 1 through 50, with a double bar line at measure 20. The tempo is Andantino. The score ends with the instruction *Menuett D.C.*

IV. Allegro ma non troppo

Musical score for Horn II in D, Allegro ma non troppo section. The score consists of ten staves. The first staff begins with a treble clef and a key signature of one sharp. The second staff begins with a treble clef and a key signature of one sharp. The third staff begins with a treble clef and a key signature of one sharp. The fourth staff begins with a treble clef and a key signature of one sharp. The fifth staff begins with a treble clef and a key signature of one sharp. The sixth staff begins with a treble clef and a key signature of one sharp. The seventh staff begins with a treble clef and a key signature of one sharp. The eighth staff begins with a treble clef and a key signature of one sharp. The ninth staff begins with a treble clef and a key signature of one sharp. The tenth staff begins with a treble clef and a key signature of one sharp. The score includes measures 1 through 120, with a double bar line at measure 60. The tempo is Allegro ma non troppo. The score includes the instruction *ff* at measure 60 and *p* at measure 90.

# Symphony Concertante

Horn in D 2

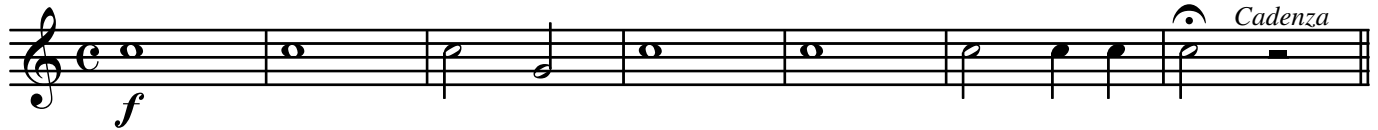
Mvt. I insert

Dittersdorf

Instructions:

After measure 110 of your published part, play this insert.

At the conclusion of the cadenza, play from  
measure 111 to the end as printed in your part.



at conclusion of cadenza,  
play from measure 111 to end  
as printed in part