

# BRANSLE DOUBLE

(from: *Terpsichore, TMA 6 - 1612*)  
for Oboe and Harpsichord

Score (02':14")

Pierre-Francois Caroubel (1556 - 1611-15)  
Arr. Michel Rondeau

Part I - Allegretto ♩ = 70

Oboe

Harpsichord

Ob.

Hpschd.

Ob.

Hpschd.

Part II

BRANSLÉ DOUBLE - TMA 6 - Caroubel - Score

19

Ob.

Hpschd.

Detailed description: This system contains the first two systems of music. The first system is for the Oboe (Ob.) and the second system is for the Harpsichord (Hpschd.). Both systems start at measure 19. The Oboe part features a melodic line with eighth and sixteenth notes, including a repeat sign and a fermata. The Harpsichord part consists of a rhythmic accompaniment with chords and single notes in both the right and left hands, also featuring a repeat sign and a fermata. The key signature has one flat (B-flat).

25

Part III

Ob.

Hpschd.

Detailed description: This system contains the third and fourth systems of music. The third system is for the Oboe (Ob.) and the fourth system is for the Harpsichord (Hpschd.). Both systems start at measure 25. The section is labeled "Part III". The Oboe part continues with a melodic line, including a repeat sign and a fermata. The Harpsichord part continues with its accompaniment, featuring a repeat sign and a fermata. The key signature has one flat (B-flat).

32

Ob.

Hpschd.

Detailed description: This system contains the fifth and sixth systems of music. The fifth system is for the Oboe (Ob.) and the sixth system is for the Harpsichord (Hpschd.). Both systems start at measure 32. The Oboe part features a melodic line with a fermata. The Harpsichord part continues with its accompaniment, featuring a fermata. The key signature has one flat (B-flat).

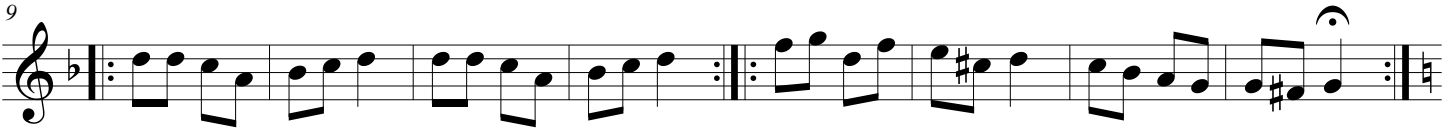
# BRANSLE DOUBLE

(from: *Terpsichore*, TMA 6 - 1612)  
for Oboe and Harpsichord

## Oboe

Pierre-Francisque Caroubel (1556 - 1611-15)  
Arr. Michel Rondeau

Part I - Allegretto ♩ = 70



# BRANSLE DOUBLE

(from: *Terpsichore, TMA 6 - 1612*)  
for Oboe and Harpsichord

## Harpsichord

Pierre-Francois Caroubel (1556 - 1611-15)  
Arr. Michel Rondeau

Oboe

Part I - Allegretto ♩ = 70

Harpsichord

Ob.

Hpschd.

Ob.

Hpschd.

Part II

BRANSLE DOUBLE - TMA 6 - Caroubel - Harpsichord

Ob.  **19**

Hpschd.  **19**

Detailed description: This system contains the first system of music, starting at measure 19. The Oboe part (Ob.) is written in a single staff with a treble clef and a key signature of one flat. It features a melodic line with eighth and sixteenth notes, including a repeat sign and a fermata. The Harpsichord part (Hpschd.) is written in two staves (treble and bass clefs) and provides a harmonic accompaniment with chords and moving lines. The system concludes with a repeat sign and a fermata.

Ob.  **25**

Hpschd.  **25** **Part III**

Detailed description: This system contains the second system of music, starting at measure 25. The Oboe part (Ob.) continues the melodic line. The Harpsichord part (Hpschd.) is labeled "Part III" and features a more complex texture with many chords and moving lines in both staves. The system concludes with a repeat sign and a fermata.

Ob.  **32**

Hpschd.  **32**

Detailed description: This system contains the third system of music, starting at measure 32. The Oboe part (Ob.) features a melodic line with a fermata. The Harpsichord part (Hpschd.) provides a harmonic accompaniment with chords and moving lines. The system concludes with a repeat sign and a fermata.