

corrected

Cello.

V. Streich Quartett.

für

2 Violinen Bratsche und Cello.

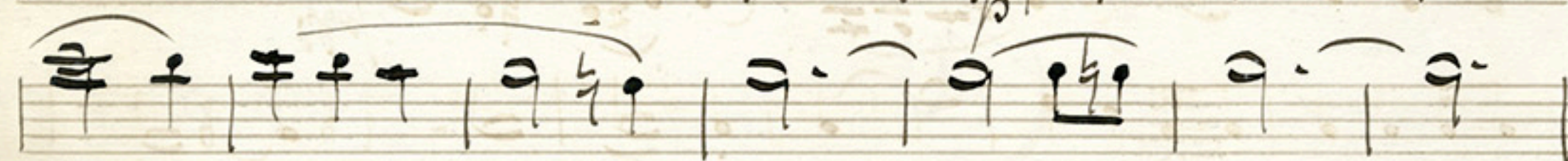
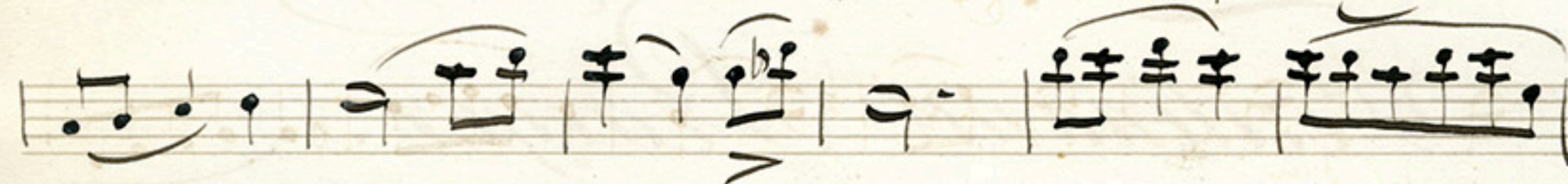
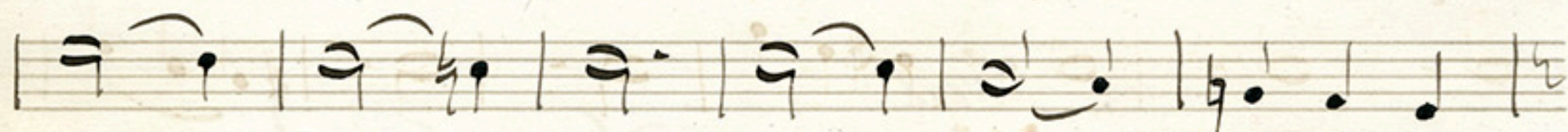
von

Ferdinand Praeger.

Cello

V. Streich Quartett.

Modorato *pesante.*



Allegro con Spirito

Handwritten musical score on ten staves. The notation includes various musical symbols such as notes, rests, accidentals, and dynamic markings. The score is written in a cursive, handwritten style.

Key markings and annotations include:

- res* (resonance) appearing multiple times.
- Viola* (instrument) marking.
- 3* (triplets).
- all* (allegro).
- Tempo* (tempo).
- mf* (mezzo-forte).
- arco* (arco).
- rall* (rallentando).
- entando* (entrando).

W. G.

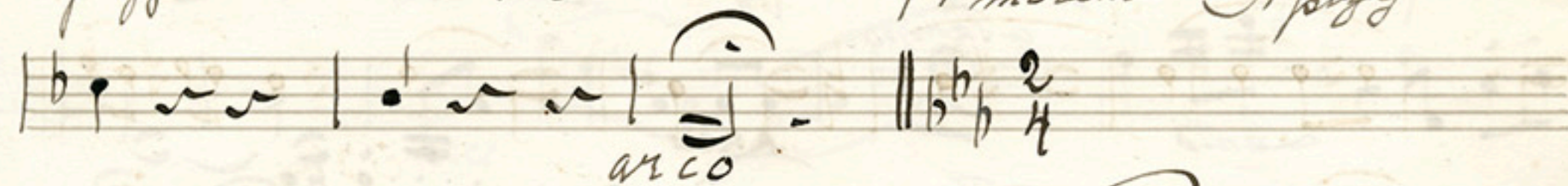
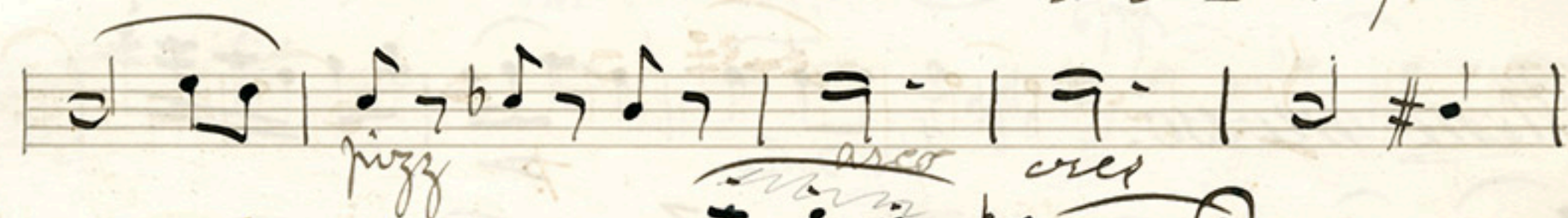
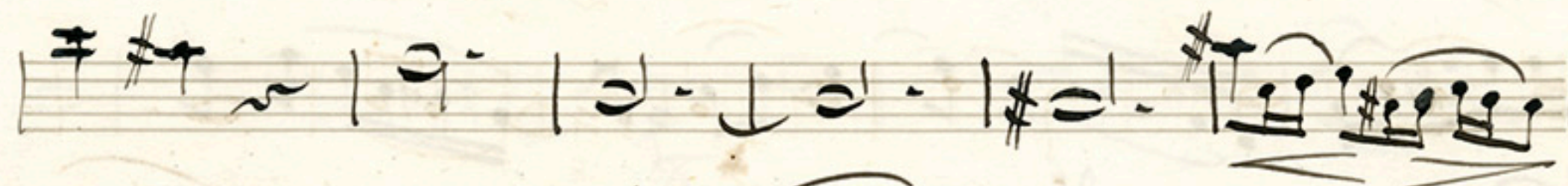
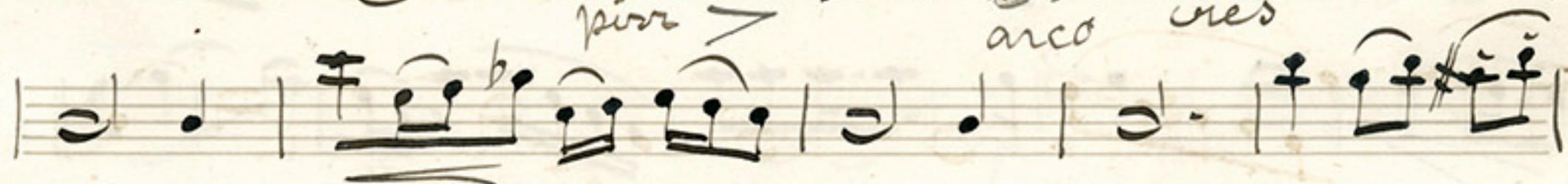
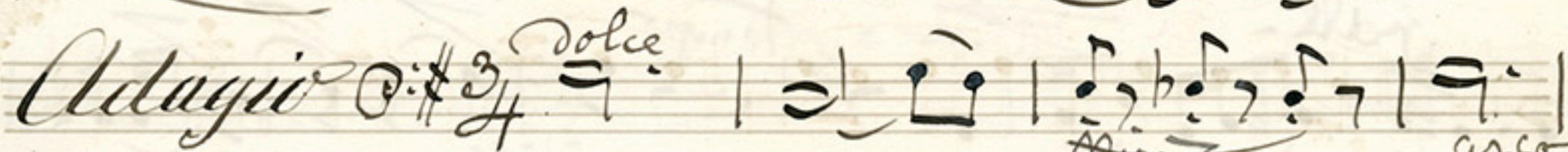
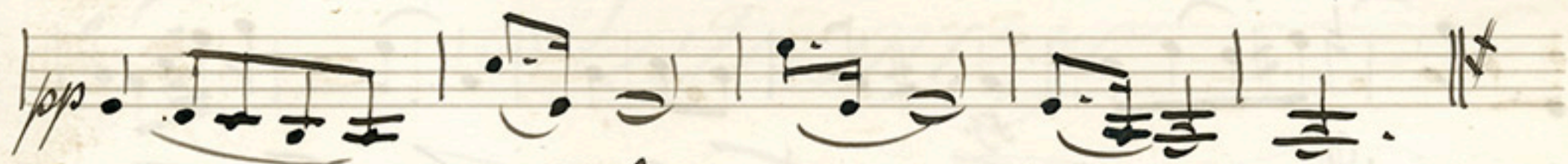
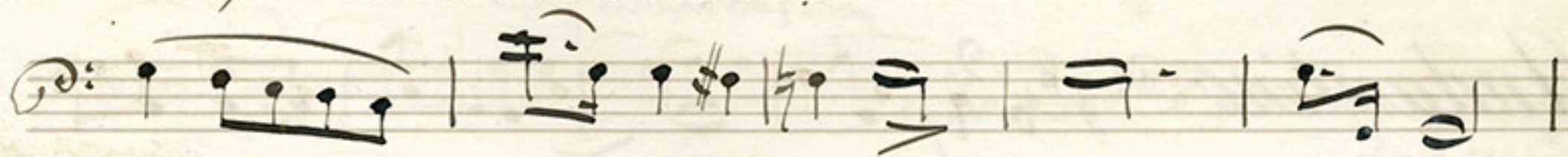
A Tempo $\text{C}:\flat\flat\frac{3}{4}$ *marcato*

Handwritten musical score for a string ensemble, measures 1-10. The score is in C major, 3/4 time, marked "A Tempo" and "marcato". It features four staves with various musical notations including notes, rests, and dynamic markings like "f" and "cresc.".

A Tempo $\text{C}:\flat\flat\frac{3}{4}$ *1st Viol*

Handwritten musical score for the first violin, measures 11-14. The score is in C major, 3/4 time, marked "A Tempo". It features a single staff with musical notations including notes, rests, and dynamic markings like "p" and "rall".

sempre dim. & rallentando.



P. J.

Cello
Romanza

Andantino $\text{C} \flat \flat \flat \frac{2}{4}$ p

Handwritten musical score for Cello, first section. The tempo is *Andantino* in $\text{C} \flat \flat \flat \frac{2}{4}$ time, starting at p . The score consists of seven staves. Performance markings include *rall.*, *Tempo*, *cresc.*, and *Fine*. The piece concludes with a double bar line and the word *Fine*.

Meno mosso $\text{C} \flat \flat \flat \frac{2}{4}$ p *dolce*

Handwritten musical score for Cello, second section. The tempo is *Meno mosso* in $\text{C} \flat \flat \flat \frac{2}{4}$ time, starting at p and *dolce*. The score consists of five staves. Performance markings include *Lento*, *a Tempo*, *ARCO*, *fz*, and *Lento* with pp . The piece concludes with a double bar line.

Cello

Da Capo
all.
Fine.
Senza replica.

Intermezzo

Modorato. 3/4 2 *Viola*

Staccato

Staccato

Staccato

Finale.
all.
con fuoco

Staccato

dim

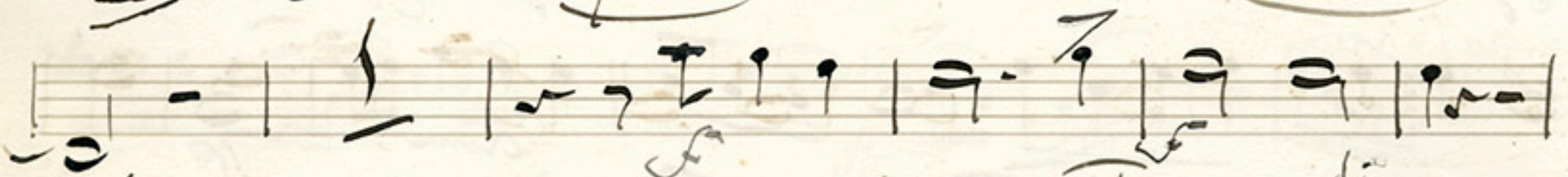
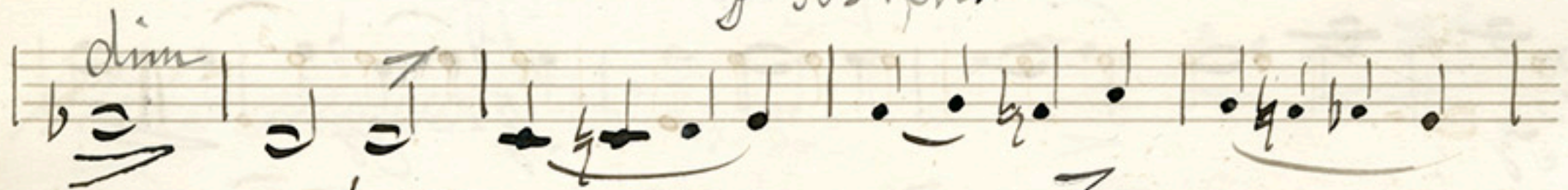
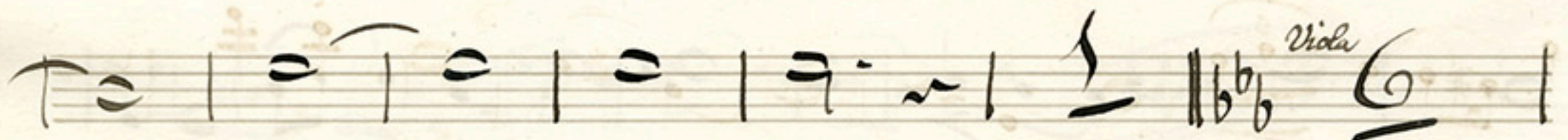
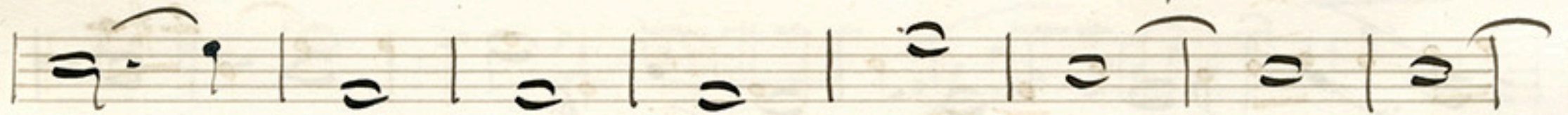
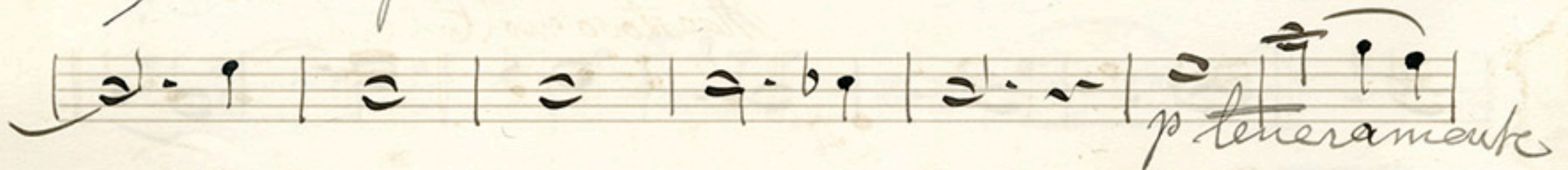
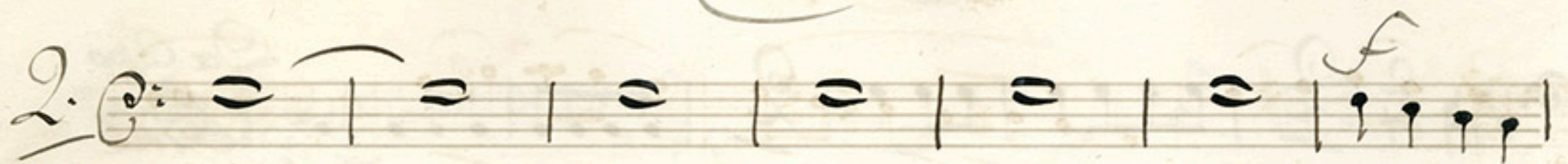
cres

Staccato

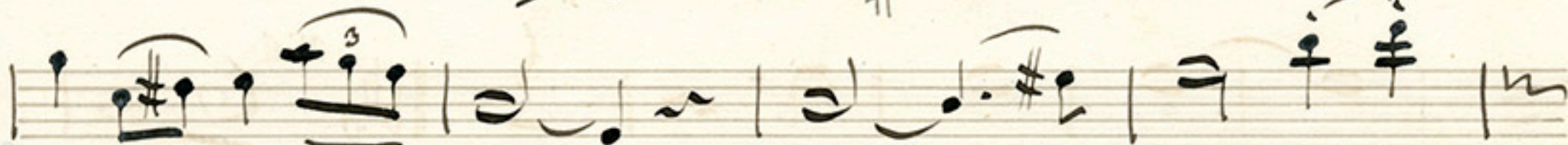
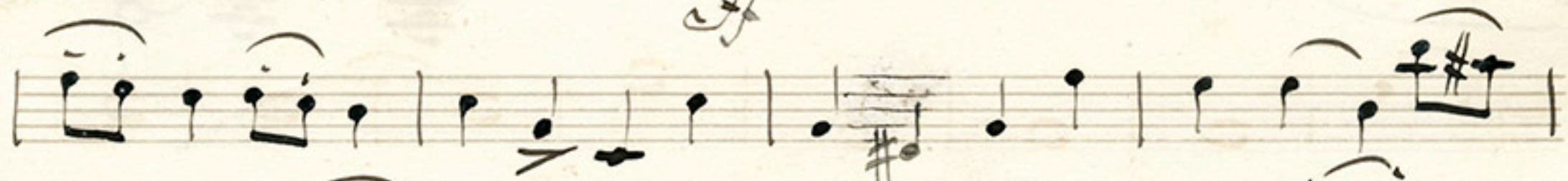
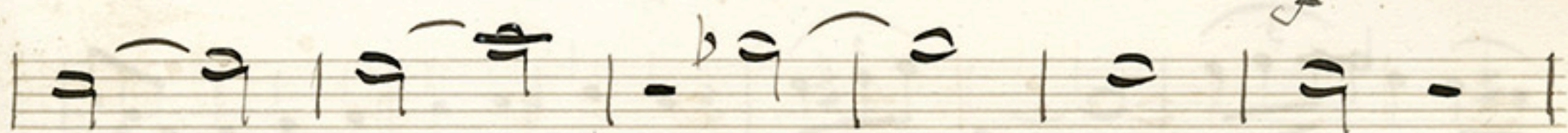
Staccato

V. S.

Cello



A single staff of handwritten musical notation. It begins with a treble clef and a colon. The first measure contains a quarter note, a beamed eighth-note pair, and a quarter note with a sharp. The second measure contains a quarter note, a beamed eighth-note pair with a sharp, and a quarter note with a sharp. The third measure contains a quarter note, a beamed eighth-note pair with a sharp, and a quarter note with a sharp. The fourth measure contains a quarter note, a beamed eighth-note pair with a sharp, and a quarter note with a sharp. The fifth measure contains a quarter note, a beamed eighth-note pair with a sharp, and a quarter note with a sharp. The sixth measure contains a quarter note, a beamed eighth-note pair with a sharp, and a quarter note with a sharp. The seventh measure contains a quarter note, a beamed eighth-note pair with a sharp, and a quarter note with a sharp. The eighth measure contains a quarter note, a beamed eighth-note pair with a sharp, and a quarter note with a sharp. The notation is written in dark ink on aged, slightly yellowed paper. There are some faint markings below the staff, possibly indicating fingerings or breath marks.



Tempo primo

Handwritten musical notation for the first system of 'L'Allegretto'. It features a single staff with a treble clef and a key signature of one sharp (F#). The notation includes a series of eighth and sixteenth notes, some beamed together, and rests. A large, ornate flourish is written below the first measure.



Maestoso molto lento

Handwritten musical score on four staves. The notation includes various note values, rests, and dynamic markings. The first staff begins with a treble clef and a key signature of one sharp (F#). The second staff features a triplet of eighth notes. The third staff contains a series of eighth notes. The fourth staff includes a tempo marking and a key signature change to one flat (Bb). The score concludes with a double bar line and a final note.

Tempo primo