

CLARINO I.
MISSA I.



Allegro Solo.

K &c. *yrice.*

K &c. *yrice.*

Alleg.

E &c. *t in terra.*

Gravé

Alto Viola Solo.

Qui tollis



Tutti

Musical staff with treble clef, key signature of one sharp (F#), and common time signature (C). The staff contains a series of rhythmic patterns with asterisks above certain notes.

Musical staff with treble clef, key signature of one sharp, and common time signature. It ends with the instruction "Quoniam Tacet." followed by a double bar line.

Musical staff with bass clef, key signature of one sharp, and common time signature. It begins with a large number "6" above the staff.

Cum sancto

Musical staff with bass clef, key signature of one sharp, and common time signature. It begins with a large number "7" above the staff.

Allegro

Musical staff with bass clef, key signature of one sharp, and common time signature. It begins with a large letter "P" above the staff and ends with a large number "23" above the staff.

atrem

Et in car.

Musical staff with bass clef, key signature of one sharp, and common time signature. It begins with a large number "3" above the staff.

Et resurrexit.

Musical staff with bass clef, key signature of one sharp, and common time signature. It begins with a large number "30" above the staff.

Alleg.

Musical staff with bass clef, key signature of one sharp, and common time signature. It begins with a large letter "E" above the staff.

Et vitam

Musical staff with bass clef, key signature of one sharp, and common time signature. It begins with a large letter "S" above the staff.

anctus

Musical staff with bass clef, key signature of one sharp, and common time signature. It ends with the instruction "Benedictus Tacet." followed by a double bar line.

Alleg.

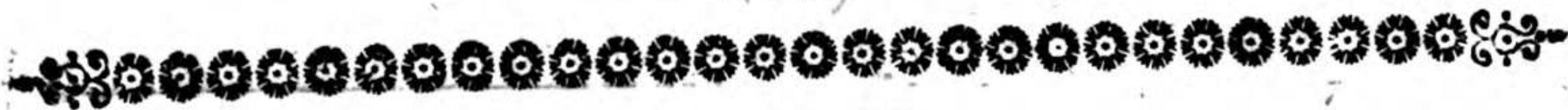
Musical staff with bass clef, key signature of one sharp, and common time signature. It begins with a large letter "O" above the staff.

anna

Largo. 9

Musical staff with bass clef, key signature of one sharp, and common time signature. It begins with a large letter "A" above the staff and ends with the instruction "Dona nobis ut Kyr: Fuga" followed by a double bar line.

gnus Dei



MISSA II.

Andante.

K *Andante.*
 Musical staff with treble clef, key signature of one flat, and common time signature. The word "yrie." is written below the staff.

Musical staff with treble clef, key signature of one flat, and common time signature.

Musical staff with treble clef, key signature of one flat, and common time signature. The text "Christe Tacet." is written above the staff.

16

K *Andante.*
 Musical staff with treble clef, key signature of one flat, and common time signature. The word "yrie" is written below the staff.

Musical staff with treble clef, key signature of one flat, and common time signature.

Musical staff with treble clef, key signature of one flat, and common time signature.

Musical staff with treble clef, key signature of one flat, and common time signature.

E *Andante.*
 Musical staff with treble clef, key signature of one flat, and common time signature. The text "t in terra" is written below the staff.

33

Musical staff with treble clef, key signature of one flat, and common time signature. The text "gratias" is written below the staff.

Musical staff with treble clef, key signature of one flat, and common time signature.

Musical staff with treble clef, key signature of one flat, and common time signature.

Domine Deus & Domine fili Tacet

Adagio.

Qui tollis.

Audanté.

Qui sedes.

Quoniam Tacet.

Miserere.

Allegro.

Cum Sancto.

Allegro.

atrem.

Et in carna. & Cruci. Tacet.

Allegro.

Et Resurrexit

Et vitam

anctus.

Pleni. Ofanna.

Benedictus Tacet. O fanna.

Agnus Dei. Dona nobis ut ultimum Kyrie Allegro.



MISSA III.

Adagio.

Kyrie.

Allegro.

Kyrie.

B

Christe Tacet Kyrie
Allegro Da Capo.

G *Allegro.*
 loria.

Alleg.
 Quoniam

Alleg.
 Cum sancto.

Allegro.

P **atrem.**

Et incarnatus & Crucif: Tacet.

Alleg.

Et Resurrexit.

Et vitam

Adagio.

S **anctus**

Alleg.

Pleni



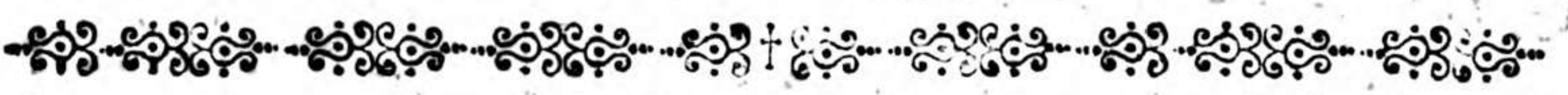
Musical staff with notes and a star symbol.

Musical staff with notes.

Musical staff starting with a large 'O' and the word 'anna' below it.

Musical staff with the text 'Benedictus Tacet Oïanna Da capo.'

Musical staff with the text 'Agnus Dei Tacet. Dona nobis út & vitam Ailabreve.'



MISSA IV.

Adagio.

Musical staff starting with a large 'K' and the word 'yrie' below it.

Musical staff with notes.

Musical staff starting with a large 'C' and the word 'hrifte.' below it.

Musical staff with notes.

Musical staff with measure numbers 22 and 25 above it.

Musical staff with notes.

E *c in terra.*

17 Adag. Andanté.

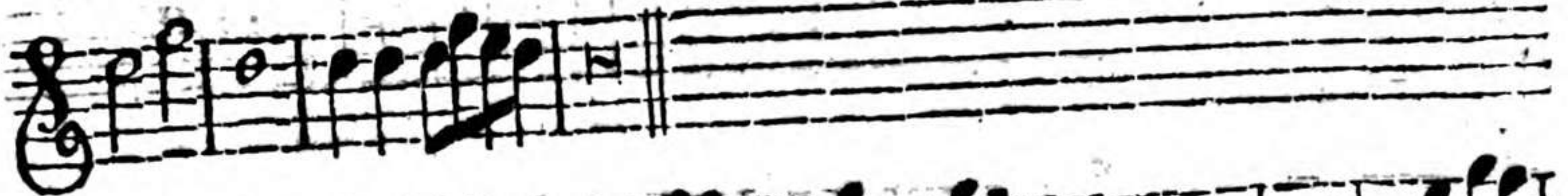
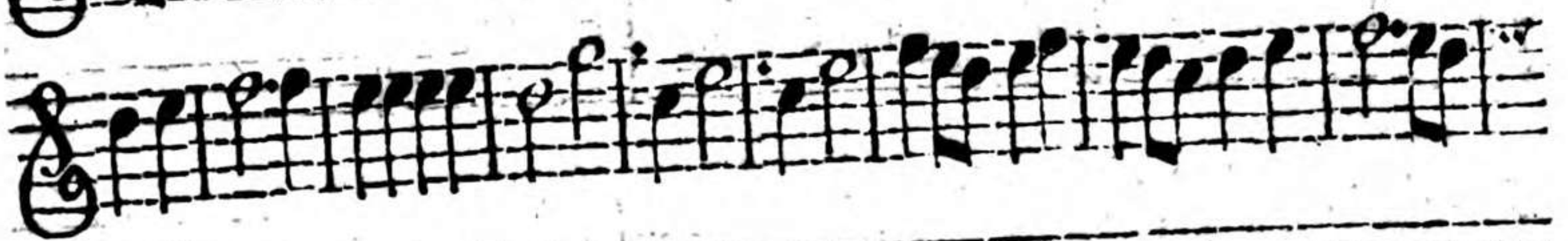
P *ati em.*

S *anctus.*

Pleni.



MISSA V. ex B.



22 Adag.

Qui tollis.

Alleg.

Qui sedes. Quoniam.

Alleg.

atrem.

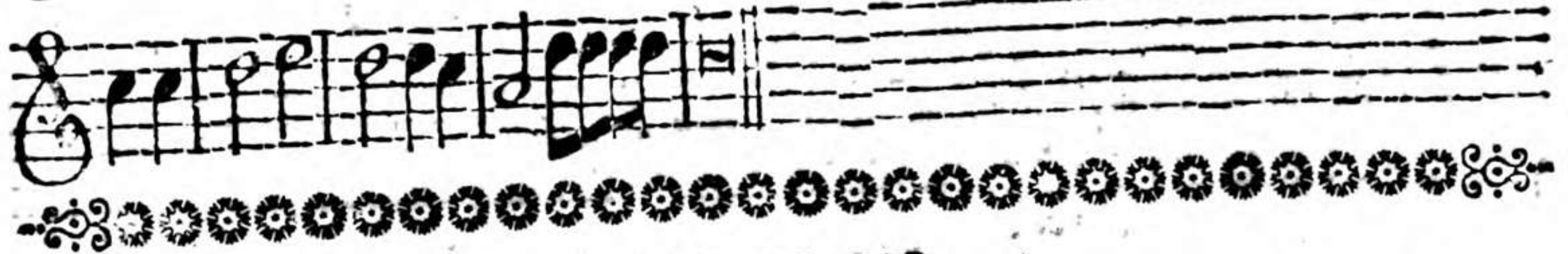
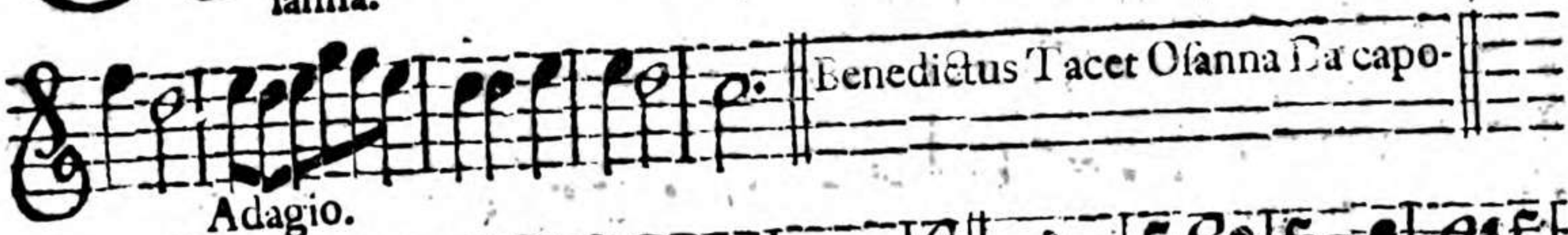
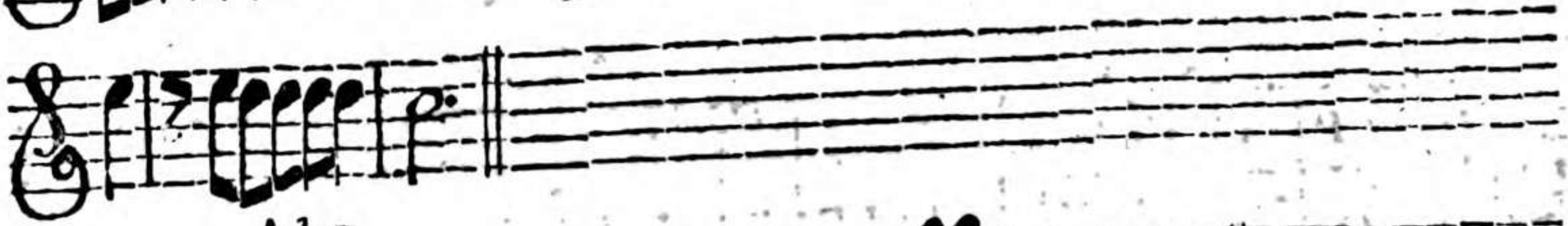
6

Crucifixus Tacet.
Et in car natus.

Et Resurrexit.

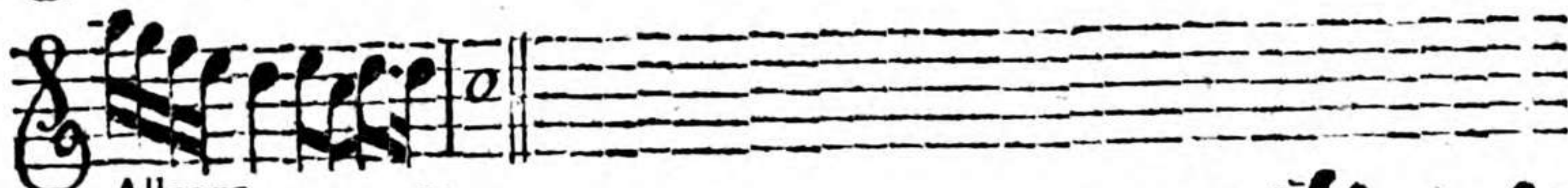
18

C2



MISSA VI. exG.





Allegro.



atrem.

Adagio.

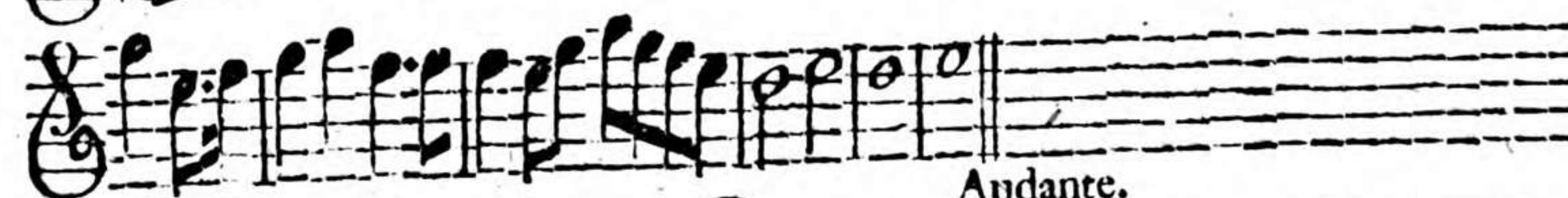


Et in carnatus.

Alleg.



crucifixus.



Grave.

Audante.



anctus.

Allegro.

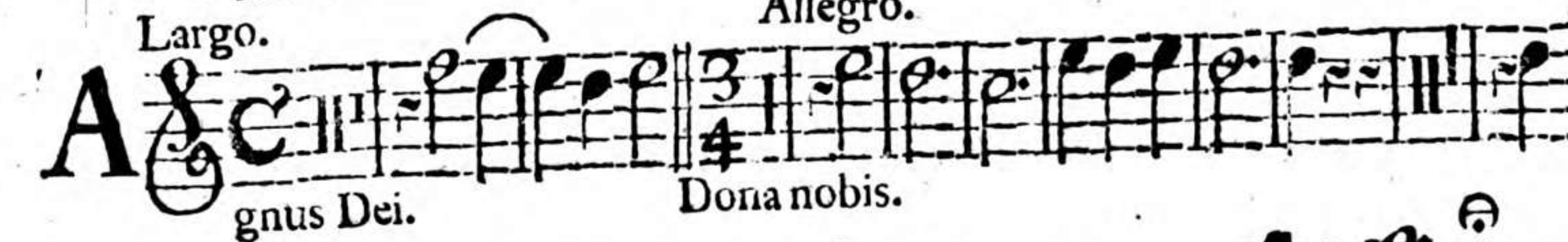


anna.

Benedictus Tacet O fanna Dacapo.

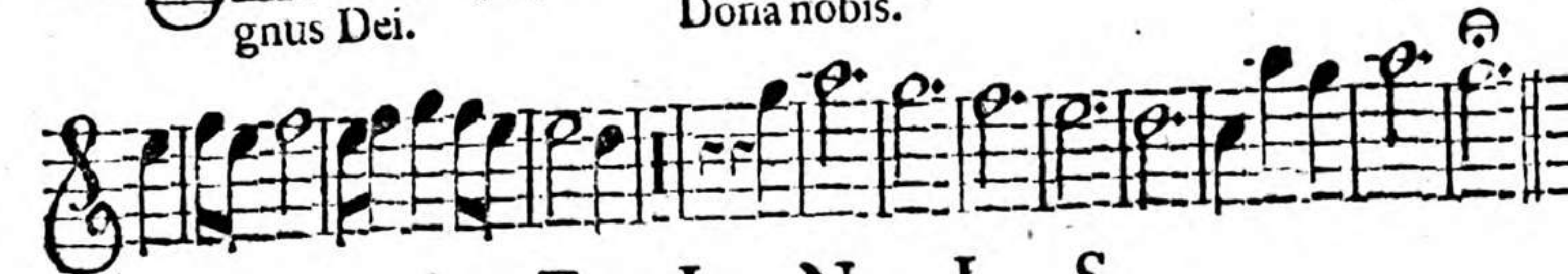
Largo.

Allegro.



gnus Dei.

Dona nobis.



F I N I S.

