

Tenor Trombone

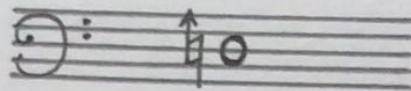
Roundelay 2002

Melvin C. Bird

note: the microtones are inflections not tempered quarter-tones, i.e. these notes should be played slightly sharper or flatter as necessary.

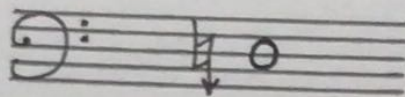
2'50" ↔ 3'35"

3'25" ↔ 4'10"



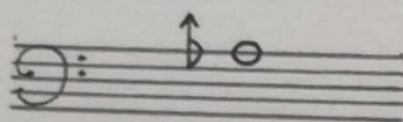
6'35" ↔ 7'05"

7'00" ↔ 7'30"



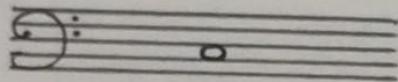
11'35" ↔ 12'15"

12'05" ↔ 12'45"



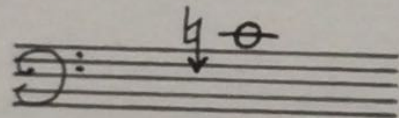
13'25" ↔ 14'15"

14'05" ↔ 14'55"



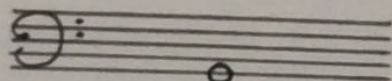
15'40" ↔ 16'10"

16'00" ↔ 16'30"



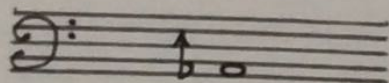
17'20" ↔ 17'55"

17'45" ↔ 18'20"



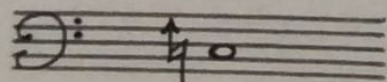
18'55" ↔ 19'40"

19'30" ↔ 20'15"



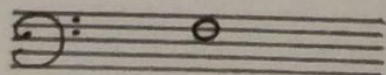
21'50" ↔ 22'45"

22'55" ↔ 23'50"



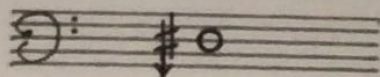
23'40" ↔ 24'10"

24'00" ↔ 24'30"



25'20" ↔ 25'45"

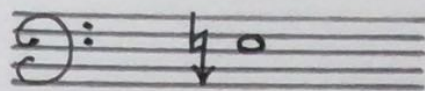
25'35" ↔ 26'00"



Tenor Trombone

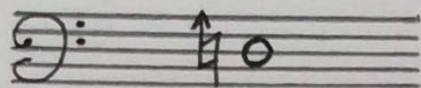
26'40" ↔ 27'00"

26'50" ↔ 27'10"



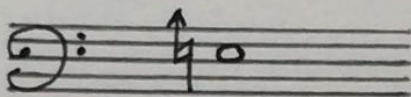
28'35" ↔ 29'05"

28'55" ↔ 29'25"



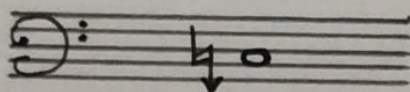
29'15" ↔ 30'00"

29'50" ↔ 30'35"



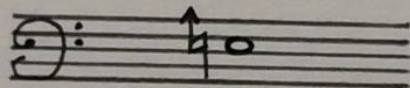
32'20" ↔ 33'15"

33'05" ↔ 34'00"



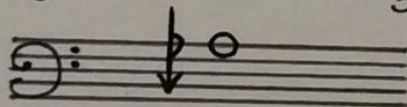
35'10" ↔ 36'20"

36'10" ↔ 37'20"



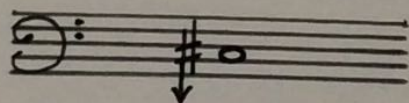
39'15" ↔ 40'05"

39'55" ↔ 40'45"



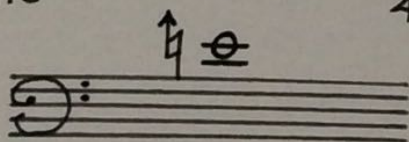
42'25" ↔ 42'50"

42'40" ↔ 43'05"



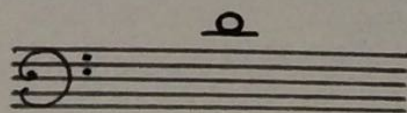
44'10" ↔ 45'10"

45'00" ↔ 46'00"



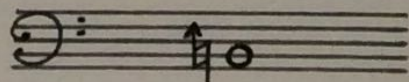
46'20" ↔ 46'50"

46'40" ↔ 47'10"



47'55" ↔ 48'35"

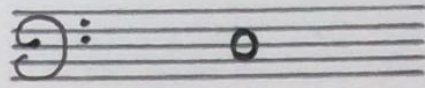
48'30" ↔ 49'10"



Tenor Trombone

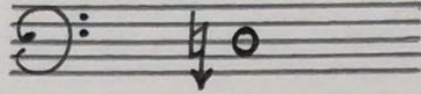
53'45" ↔ 54'25"

54'15" ↔ 54'55"



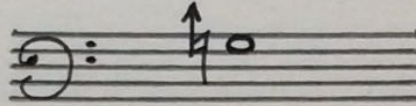
57'10" ↔ 57'45"

57'35" ↔ 58'10"



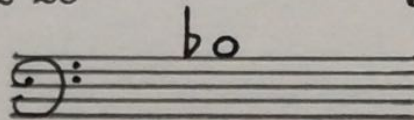
59'25" ↔ 59'55"

59'45" ↔ 60'15"



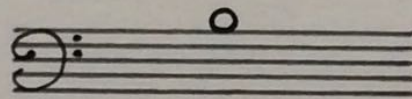
62'05" ↔ 62'25"

62'15" ↔ 62'35"



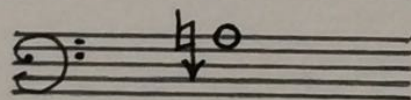
64'45" ↔ 65'25"

65'15" ↔ 65'55"



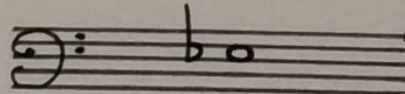
75'05" ↔ 75'35"

75'25" ↔ 75'55"



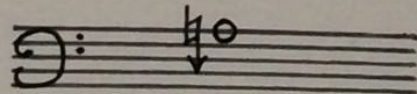
76'30" ↔ 77'10"

77'00" ↔ 77'40"



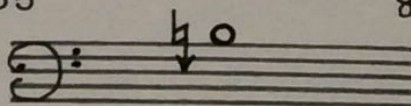
79'20" ↔ 79'40"

79'30" ↔ 79'50"



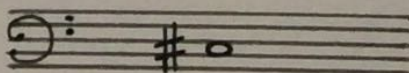
82'15" ↔ 82'55"

82'45" ↔ 83'25"



84'25" ↔ 85'15"

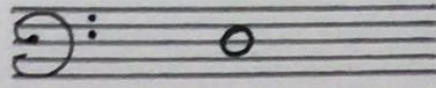
85'05" ↔ 85'55"



Tenor Trombone

86'10" ↔ 86'30"

86'20" ↔ 86'40"



103'05" ↔ 103'55"

103'50" ↔ 104'40"

