

TRUMPET ARIA

(from: Arie 'Gelieb Jesu du, allein', BWV 16.5)
for Trumpet & Organ

Score (04':08")

Johann Sebastian Bach (1685 - 1750)
Arr. Michel Rondeau

Allergetto ♩ = 70

Trumpet in C

Organ

This system contains the first four measures of the score. The Trumpet in C part is shown as a single staff with a whole rest in each measure. The Organ part consists of two staves (treble and bass clef) with a 3/4 time signature and a key signature of one flat. The organ melody begins in the second measure with a quarter rest, followed by a series of eighth and sixteenth notes.

C Tpt.

Org.

This system contains measures 5 through 8. The C Trumpet part remains silent with whole rests. The Organ part continues its melodic line, featuring a trill (tr.) in measure 7. The organ part is written on two staves.

C Tpt.

Org.

This system contains measures 9 through 12. The C Trumpet part remains silent with whole rests. The Organ part continues with a steady eighth-note accompaniment in the bass and a more active melody in the treble.

C Tpt.

Org.

This system contains measures 13 through 16. The C Trumpet part remains silent with whole rests. The Organ part concludes the piece with a trill (tr.) in measure 15. The organ part is written on two staves.

TRUMPET ARIA - BWV 16.5 - Bach - Score

2
17

C Tpt.

Org.

22

C Tpt.

Org.

26

C Tpt.

Org.

30

C Tpt.

Org.

TRUMPET ARIA - BWV 16.5 - Bach - Score

33

C Tpt.

Org.

37

C Tpt.

Org.

41

C Tpt.

Org.

45

C Tpt.

Org.

TRUMPET ARIA - BWV 16.5 - Bach - Score

4
49

C Tpt.

Org.

54

C Tpt.

Org.

58

C Tpt.

Org.

62

C Tpt.

Org.

TRUMPET ARIA - BWV 16.5 - Bach - Score

66

C Tpt.

Org.

66

70

C Tpt.

Org.

70

75

C Tpt.

Org.

75

79

C Tpt.

Org.

79

TRUMPET ARIA - BWV 16.5 - Bach - Score

6
83

C Tpt.

Org.

87

C Tpt.

Org.

91

C Tpt.

Org.

94

C Tpt.

Org.

Dal Segno

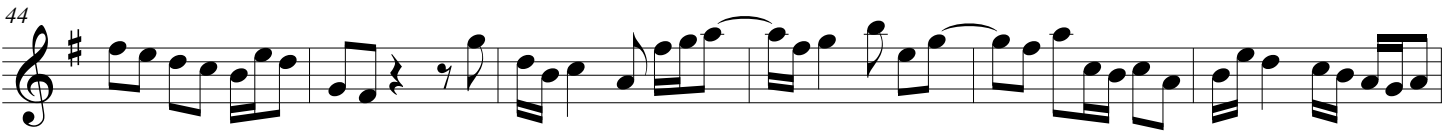
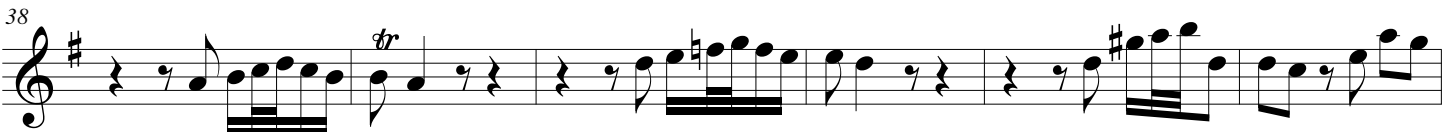
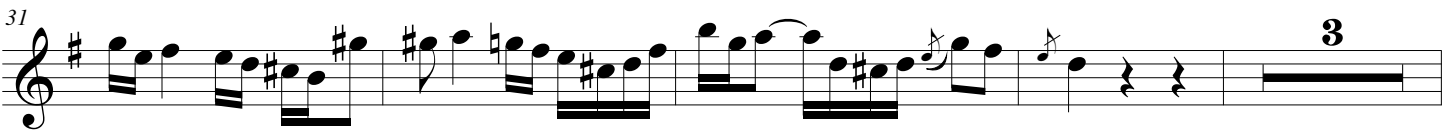
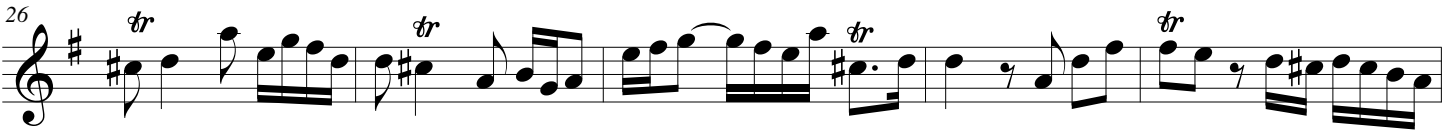
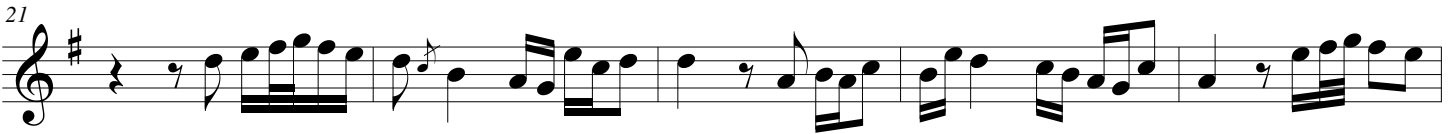
TRUMPET ARIA

(from: Arie 'Gelieb Jesu du, allein', BWV 16.5)
for Trumpet & Organ

Trumpet in B \flat

Johann Sebastian Bach (1685 - 1750)
Arr. Michel Rondeau

Allergetto $\text{♩} = 70$
16



TRUMPET ARIA - BWV 16.5 - Bach - B \flat Trumpet

76

81

89

94

Dal Segno

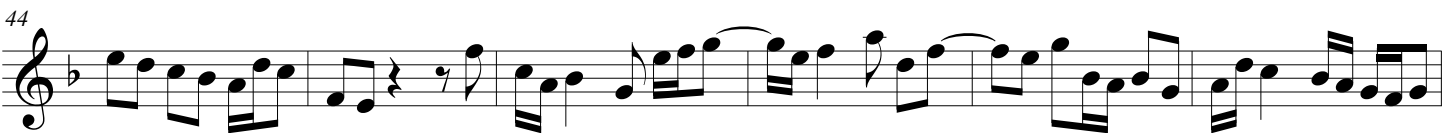
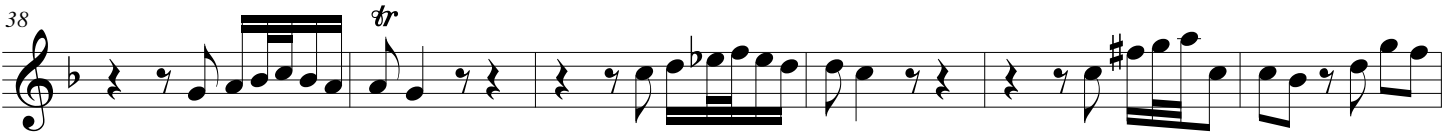
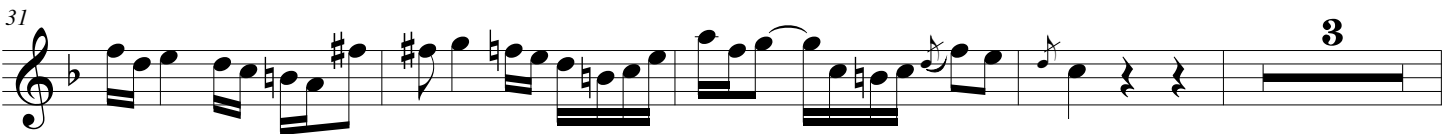
TRUMPET ARIA

(from: Arie 'Gelieb Jesu du, allein', BWV 16.5)
for Trumpet & Organ

Trumpet in C

Johann Sebastian Bach (1685 - 1750)
Arr. Michel Rondeau

Allergetto $\text{♩} = 70$
16



TRUMPET ARIA - BWV 16.5 - Bach - C Trumpet

76

81

89

94

Dal Segno

TRUMPET ARIA

(from: Arie 'Gelieb Jesu du, allein', BWV 16.5)
for Trumpet & Organ

Johann Sebastian Bach (1685 - 1750)
Arr. Michel Rondeau

Organ

Trumpet in C

Organ

Allergetto ♩ = 70

C Tpt.

Org.

C Tpt.

Org.

C Tpt.

Org.

TRUMPET ARIA - BWV 16.5 - Bach - Organ

2
17

C Tpt.

Org.

22

C Tpt.

Org.

26

C Tpt.

Org.

30

C Tpt.

Org.

TRUMPET ARIA - BWV 16.5 - Bach - Organ

C Tpt. ³³

Org. ³³ *tr*

Detailed description: This system covers measures 33 to 36. The C Trumpet part (top staff) begins at measure 33 with a melodic line of eighth and sixteenth notes, followed by rests in measures 34, 35, and 36. The Organ part (bottom two staves) starts at measure 33 with a complex texture. The right hand features a trill in measure 33, followed by a series of sixteenth-note patterns. The left hand provides a steady accompaniment of eighth notes.

C Tpt. ³⁷

Org. ³⁷ *tr*

Detailed description: This system covers measures 37 to 40. The C Trumpet part (top staff) has rests in measures 37 and 38, then enters in measure 39 with a melodic line, and continues in measure 40. The Organ part (bottom two staves) continues its intricate texture. The right hand has a trill in measure 37 and continues with sixteenth-note patterns. The left hand maintains the eighth-note accompaniment.

C Tpt. ⁴¹

Org. ⁴¹

Detailed description: This system covers measures 41 to 44. The C Trumpet part (top staff) begins at measure 41 with a melodic line. The Organ part (bottom two staves) continues with its characteristic sixteenth-note patterns in the right hand and eighth-note accompaniment in the left hand.

C Tpt. ⁴⁵

Org. ⁴⁵

Detailed description: This system covers measures 45 to 48. The C Trumpet part (top staff) continues its melodic line. The Organ part (bottom two staves) maintains the complex texture of sixteenth-note patterns in the right hand and eighth-note accompaniment in the left hand.

TRUMPET ARIA - BWV 16.5 - Bach - Organ

4
49

C Tpt.

Org.

54

C Tpt.

Org.

58

C Tpt.

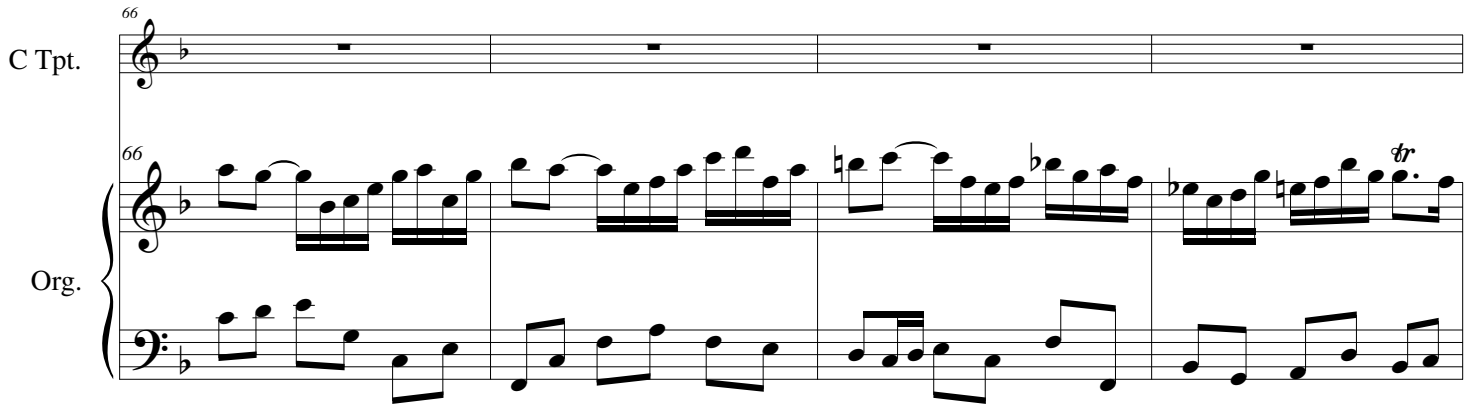
Org.

62

C Tpt.

Org.

TRUMPET ARIA - BWV 16.5 - Bach - Organ

C Tpt. 

C Tpt. 

C Tpt. 

C Tpt. 

TRUMPET ARIA - BWV 16.5 - Bach - Organ

6
83

C Tpt.

Org.

87

C Tpt.

Org.

91

C Tpt.

Org.

94

C Tpt.

Org.

Dal Segno