

Peter Ilyich Tchaikovsky
Francesca da Rimini, Op. 32

Corno 1 INF.

Andante lugubre.

4.
p cresc. f

4
mf p f

Piu mosso. Moderato.

8
f

12
mf poco. cresc

1. 2. 2.
f mf p rit.

Tempo I Allegro vivo

7 8 6 7
p ma marcato p ma marcato

3. 3. 3. C 9. 2.
mf p

10. 1. 1. 1. D 8
p mf mf

1. 1.
fff

Tchaikovsky — Francesca da Rimini

Corno 1 INF.

1. 1. E
fff *f*

2. 2. F
ff

G *f* *f* *f* *marcato* 7.

8. 1. 1. 1. *f*

H *ff* 4.

1. 2. 3. *ff*

J *fff* 1. 1.

1. 1. K *f*

2. *ff*

L *fff* 3.

Tchaikovsky — Francesca da Rimini

Corno 1 INF.

Musical notation for Corno 1 INF, measures 1-29. The score consists of three staves. The first staff contains measures 1-2. The second staff contains measures 3-5. The third staff contains measures 6-29. Dynamics include *f*, *mf*, and *p*. A *riten* marking is present at the end of measure 29. Rehearsal marks 1, 6, 1, 29, and 1 are indicated above the staves.

Andante cantabile non troppo.

Musical notation for Corno 1 INF, measures 30-50. The score consists of three staves. The first staff contains measures 30-32. The second staff contains measures 33-35. The third staff contains measures 36-50. Dynamics include *p*, *un poco marcato*, *f*, *dim*, and *mf*. Rehearsal marks 7, 6 N, and 13 are indicated above the staves.

Stesso tempo.

un poco marcato

Musical notation for Corno 1 INF, measures 51-99. The score consists of six staves. The first staff contains measures 51-55. The second staff contains measures 56-60. The third staff contains measures 61-65. The fourth staff contains measures 66-70. The fifth staff contains measures 71-75. The sixth staff contains measures 76-99. Dynamics include *mf*, *p*, *pp*, *f*, *pp*, *p*, *mf*, *f*, *mf*, and *ff*. Rehearsal marks 12, 1, 5 P 1, 2, 4 *espressivo*, 5 Q 2, R, and 1 S 1 are indicated above the staves.

Tchaikovsky — Francesca da Rimini

4

Corno 1 INF.



Allegro vivace.



Allegro vivo.



Tchaikovsky — Francesca da Rimini

Corno 1 INF.



Poco piu mosso.



Peter Ilyich Tchaikovsky
Francesca da Rimini, Op. 32

Corno 2 IN F.

Andante lugubre.

4
p cresc. f

piu mosso. moderato.

mf p f mf p

A 12 B 4

mf poco cresc.

Tempo I

f ritenuto

Allegro vivo.

p ma marcato p ma marcato

mf

p mf

D 8

fff

mf

Tchaikovsky — Francesca da Rimini

2

Corno 2 IN F.

The musical score for Corno 2 in F consists of ten staves of music. The notation includes various dynamics such as *fff*, *f*, *ff*, *mf*, and *marcato*. Articulations like accents and slurs are used throughout. Fingerings and breath marks are indicated by numbers and letters (E, F, G, H, J, K, L) above the notes. The score is written in a single system with ten staves.

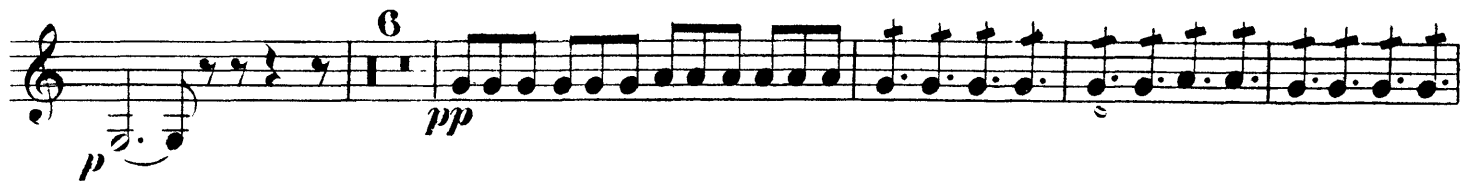
Corno 2 IN F.



Andante cantabile non troppo.



Listesso tempo.



Tchaikovsky — Francesca da Rimini

Corno 2 IN F.

fff

p

Allegro vivace. 1 3 8 *fff*

Allegro vivo. 2 6 7 *p ma marcato* *p ma marcato*

mf 3 8 T 9 *p* *mf* 2 *p*

mf 10 1 1 1 1 U 8

fff

1 1 1 1 X

f *fff* *fff* 1

Tchaikovsky — Francesca da Rimini

CORNO 2 IN F.

Z
ff

3

2 **1** **1**

1 **1** **1** **1** **5**
f *mf*

Poco piu mosso
mf *cresc.* **3** *ff*

ff

1

1

Peter Ilyich Tchaikovsky
Francesca da Rimini, Op. 32

Corno 3 INF.

Andante lugubre.

4
p cresc. *f* 4

Piu mosso. Moderato

mf *p* *f* *f* 4

4 *mf* A1

B 12 *f dim.* 2 2 7 *riten.*

Tempo I.

Allegro vivo.

19 3 3 17 C *mf*

2 2 1 4 D *p* *mf*

mf 1 1

1 1 2 E *mf*

2 F *mf*

G 3 *f*

Tchaikovsky — Francesca da Rimini

2

Corno 3 IN F.

The musical score for Corno 3 in F consists of ten staves of music. The notation includes various dynamics such as *f*, *ff*, *mf*, and *ritenuto*, along with articulations like accents and slurs. Fingerings and breath marks are indicated throughout the piece. The score concludes with a double bar line and the word *ritenuto*.

7 6 1

1 1 H

4 1 3

1 J

1 1 1 1 K

2 4

L

1 1 1

1 M 42 1

f *mf* *ritenuto*

Corno 3 IN F

Andante cantabile non troppo.

20 *pp* *mf* *p* *pp* 3 4 N 15 *p*

marcato. *mf* 05 *pp* 17

Listesso tempo.

20 P 2 *p* 8 *pp* *pp* *pp*

6 Q 6 R *mf* *cresc.* *f* *mf* *f*

mf *ff*

1 S 1 *fff*

mf

6 *p*

p *cresc.*

Allegro vivace.

1 3 8 *ff* *fff*

Tchaikovsky — Francesca da Rimini

4

Corno 3 IN F

Allegro vivo

19 3 8 T 17 2 2

1 4 U 8

1 1 1 1 X

2 4

2

1

1 1 1 1 1 5

Poco piu mosso.

mf cresc. ff 3

fff

1

1

Peter Ilyich Tchaikovsky
Francesca da Rimini, Op. 32

Corno 4 IN F

Andante lugubre

Piu mosso. Moderato.

12 A4 poco cresc.

Tempo I

Allegro vivo.

Tchaikovsky — Francesca da Rimini

2

Corno 4 IN F

The musical score for Corno 4 in F consists of ten staves of music. The first staff begins with a dynamic marking of *f* and includes fingerings 7, 6, and 1. The second staff features *ff* dynamics and articulations labeled 1, 1, H, and *ff*. The third staff includes fingerings 4, 1, and 2, with a *ff* dynamic. The fourth staff has a *fff* dynamic and an articulation labeled 1J. The fifth staff includes fingerings 1, 1, 1, and 1K. The sixth staff features a *f* dynamic. The seventh staff includes a *fff* dynamic and an articulation labeled L. The eighth staff has a *f* dynamic and a fingering of 1. The ninth staff includes fingerings 1, 1, 1, and 1. The tenth staff begins with a dynamic of *f*, followed by *mf*, and includes a *riten* marking. The final section is marked *pp* and includes fingerings 4, 5, and 5. The tempo instruction **Andante cantabile non troppo.** is placed above the final staff.

Corno 4 IN F

4 N 14 05

pp *pp* *p* *mf* *marcato*

17 20 8

pp *pp* *p* *p*

6 Q 8

R *mf* *cresc.* *f* *mf* *f*

ff

1 S 1 *fff*

6 *p*

cresc. *p*

Allegro vivace.

1 3 8 6

ff *fff*

Tchaikovsky — Francesca da Rimini

4

Cornò 4 IN F

Allegro vivo.

19 3 8 T 17 2 2

mf p mf p mf

mf fff

1 1 1X

3 3

1

1 1 1 1 1 5

Poco piu mosso.

3 3

mf cresc. ff

1

1

1