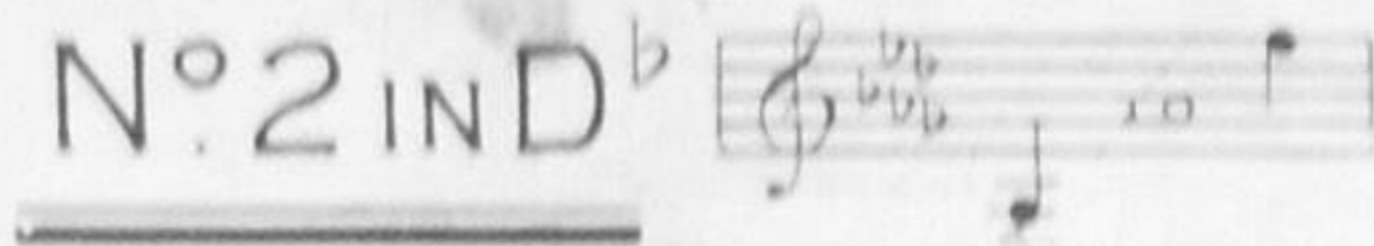


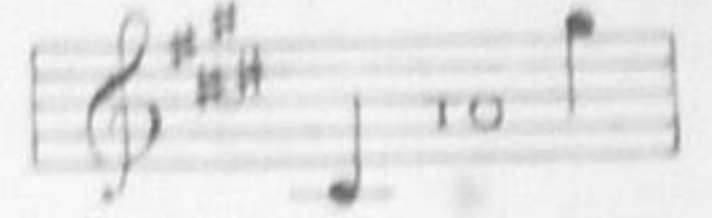
N^o. 1 IN C



N^o. 2 IN D^b



N^o. 3 IN E



DEDICATED TO AND
SUNG BY
MISS CLARA BUTT.

ABIDE WITH ME

*
Sacred Song

THE WORDS BY

HENRY FRANCIS LYTE

THE MUSIC

* by *

S. LIDDLE.

Price 2/- net

WITH ORGAN ACCOMPANIMENT

AN ORCHESTRAL ACCOMPANIMENT TO THIS SONG IS PUBLISHED IN THE KEY OF E^b
"ABIDE WITH ME" ARRANGED FOR THE PIANOFORTE BY THE COMPOSER, 2/- NET.

BOOSEY & C^o

295, REGENT STREET, LONDON, W.

AND
9 EAST SEVENTEENTH STREET, NEW YORK.

THIS SONG MAY BE SUNG IN PUBLIC WITHOUT FEE OR LICENSE.
THE PUBLIC PERFORMANCE OF ANY PARODIED VERSION, HOWEVER, IS STRICTLY PROHIBITED.

COPYRIGHT 1896 BY BOOSEY & C^o

Boosey & Co

ABIDE WITH ME.

Words by
HENRY FRANCIS LYTE.

Music by
S. LIDDLE.

Andante.

VOICE.

PIANO.

Musical score for the piano introduction. It consists of two staves: a treble clef staff and a bass clef staff. The key signature has three flats (B-flat, E-flat, A-flat) and the time signature is common time (C). The music begins with a *mf* dynamic and includes markings for *cresc.*, *sf*, and *ff*. There are several accents (^) and a fermata at the end of the first phrase. Below the bass staff, there are markings for *Red.* and asterisks (*).

tranquillo e molto espressivo

ten.

A - bide with me! fast falls the ev - en -

Musical score for the first vocal phrase. It includes a vocal line and a piano accompaniment. The piano part starts with a *dim.* marking and a *p* dynamic. The vocal line has a *tranquillo* marking. The piano accompaniment includes a *colla voce* marking. There are *Red.* and *ten.* markings below the piano part.

- tide; The dark - ness deep - ens; Lord with me a - bide! When o - ther help - ers

Musical score for the second vocal phrase. It includes a vocal line and a piano accompaniment. The piano part has a *colla voce* marking. There are *Red.* and *ten.* markings below the piano part.

(H. 1600)

Ossia.

fail and com-forts flee, Help of the help-less, O a-bide with

cresc.

colla voce
dim.

mel. Swift to its close ebbs out life's lit-tle day; Earth's

p *sempre tranquillo* *ten.*

a tempo

p *pp sempre* *colla voce*

Ed. 8 * *simile*

joys grow dim, its glories pass a-way; Change and de-cay in all a-

ten.

cresc.

round I see; O Thou Who changest not a-bide with me! . .

cresc. *ten.* *rall.*

cresc. *sf* *rall.*

*more animated
quicker*

Più animato.

I need Thy pres - - - ence ev - 'ry pass - ing

hour; What but Thy Grace can

cresc.

mf *p* *cresc.*

foil the tempt - er's power? Who like Thy -

f *cresc.* *mf* *p cresc.*

self my guide and stay can be? Through cloud and

mf *f colla voce* *tempo* *ad lib.* *mf colla voce*

allargando

rall. dim. pp *cresc.*

sun - shine Lord a - bide with me!

p rall. pp *cresc. molto rall. poco*

Allegro maestoso e forte.

I fear no foe, with Thee at hand to

bless; Ills have no

weight, and tears no bit - ter - ness;

marcato

draw out

allargando

Where is death's sting? Where,

ff allargando sf sf sf

grave, thy vic - to - ry? I tri - umph

ff rall. sf sf accel. ff colla voce

ad lib. ten.

Tempo I. Andante.

still, if Thou a - bide.. with... me

ff sf sempre f pp molto tranquillo

p tranquillo molto

Hold Thou Thy Cross be - fore my clos - ing eyes;

una corda colla voce

Abide with me. *Ad. sempre*

Shine through the gloom, and point me to the

ten. *rall. poco*

colla voce

skies, Heaven's morn - ing breaks, and

tempo cresc.

earth's vain shad - ows flee; In life, In death, O

f *solenne* *molto espressivo*

f *solenne p*

Molto andante.

Lord a - bide with me.

p *f* *p* *pp*

ABIDE WITH ME.

Words by
HENRY FRANCIS LYTE.

Music by
S. LIDDLE.

Moderato.

Voice. 7 12

A - bide with me fast O a bide with me

Organ. 7 12

tranquillo molto

ad lib.

Swift to its close ebbs out life's lit - tle day; Earth's joys grow dim, its glo - ries

p *colla voce*

Manuals only.

pass a - way; Change and de - cay in all a - round I see; O Thou Who

Ped. 16 ft coupled.

Più animato.

changest not, a - bide with me. . . *3rd time* I need Thy foil the tempter's power?

5

p

Ped.

ad lib.

Who like Thy self my guide and stay can be? Through cloud and sunshine, Lord a - bide with me

cresc. *f* *rall.*

Allegro maestoso.

I fear no foe with Thee at hand to bless; Ills have no weight and tears no

mf *mf* *mf*

bit - ter - ness; Where is death's sting? Where, grave, thy vic - to - ry? I triumph still if Thou a -

mf *f* *colla voce* *ff* *ten.*

Più animato.

bide with me. Hold Thou Thy point me to the skies; Heaven's morning breaks and

p *tranquilla* *ad lib.* *colla voce* *p*

Manuals only.

earth's vain shadows flee; In life, In death, O Lord a - bide with me.

ad lib. *colla voce* *cresc.* *mf* *mp*

ped. soft 16 ft. coupled. (H. 1600²)