

Fl

O

Cl

Fag

C

C

Tr

Tymp

Tr

I

II

III

C

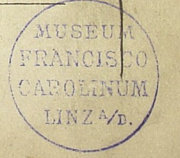
B

Handwritten musical score for orchestra and voices. The score is written on 24 staves. The first 16 staves are for woodwinds and brass, and the last 8 staves are for strings and voices. The music is in a common time signature and features complex rhythmic patterns and dynamics. The word "crescendo" is written in the lower part of the score.

Handwritten musical score for orchestra. The score is written on 24 staves, with the following instruments listed on the left:

- Fl
- O
- Cl
- Fag
- C
- C
- Tu
- Tymp
- Tu
- I
- II
- III
- C
- B

The score is divided into five measures by vertical bar lines. The first measure contains some faint markings. The second measure features a melodic line in the Clarinet (Cl) staff, marked *al* (allegro), and a corresponding bass line in the Bassoon (Fag) staff. The third and fourth measures continue this melodic and bass line. The fifth measure concludes the passage. The strings (I, II, III) have a rhythmic accompaniment throughout, with the word *crescendo* written below the first staff of strings in the second measure. The woodwinds (Fl, O, Cl, Fag, Tu) and brass (C, C, Tu, B) are mostly silent, indicated by horizontal lines across their staves.

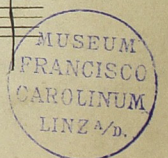


Handwritten musical score on a page with a ruler on the left. The score consists of 24 staves, each with a label on the left side. The labels are: Fl, O, Cl, Fag, C, C, Tr, Tympan, Tr, I, II, III, C, B. The music is written in a system with five measures. The first staff (Fl) has a treble clef and a key signature of one sharp (F#). The second staff (O) has a treble clef and a key signature of one sharp. The third staff (Cl) has a treble clef and a key signature of one sharp. The fourth staff (Fag) has a bass clef and a key signature of one sharp. The fifth staff (C) has a bass clef and a key signature of one sharp. The sixth staff (C) has a bass clef and a key signature of one sharp. The seventh staff (Tr) has a bass clef and a key signature of one sharp. The eighth staff (Tympan) has a bass clef and a key signature of one sharp. The ninth staff (Tr) has a bass clef and a key signature of one sharp. The tenth staff (I) has a bass clef and a key signature of one sharp. The eleventh staff (II) has a bass clef and a key signature of one sharp. The twelfth staff (III) has a bass clef and a key signature of one sharp. The thirteenth staff (C) has a bass clef and a key signature of one sharp. The fourteenth staff (B) has a bass clef and a key signature of one sharp. The music is written in a system with five measures. The first measure contains a whole note chord. The second measure contains a whole note chord. The third measure contains a whole note chord. The fourth measure contains a whole note chord. The fifth measure contains a whole note chord. The music is written in a system with five measures. The first measure contains a whole note chord. The second measure contains a whole note chord. The third measure contains a whole note chord. The fourth measure contains a whole note chord. The fifth measure contains a whole note chord.

1/2

Lento

Handwritten musical score for orchestra and piano. The score is written on 15 staves. The instruments listed on the left are: Fl (Flute), O (Oboe), Fag (Fagott/Bassoon), C (Clarinetti/Clarinets), Tr (Trombe/Trombones), Tympani (Tympani), and Piano (Piano). The piano part is numbered 1, 2, and 3. The score includes various musical notations such as notes, rests, dynamics (p, f), and articulation marks. The word *col Basso* is written in the piano part. The score is divided into measures by vertical bar lines.



Fl

O

Cl

Fag

Ob

C

Tp

Tymp

Ch

I

II

III

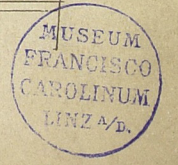
C

B

Handwritten musical score for a symphony orchestra. The score is written on 24 staves. The top two staves (Flute and Oboe) contain melodic lines with notes and rests. The next six staves (Clarinet, Bassoon, Trumpet, Trombone, and Horn) are mostly empty, indicating rests. The bottom six staves (Violin I, Violin II, Viola, Violoncello, Double Bass, and Piano) contain dense musical notation, including chords, arpeggios, and melodic lines. The piano part is marked "col Passa" and "Cresc C". The score is divided into four measures by vertical bar lines.

1
2
3
4
5
6
7
8
9
10
11
12
13
14
15
16
17
18
19
20
21
22
23
24
25
26

Handwritten musical score for orchestra and voice. The score is written on 24 staves. The instruments listed on the left are Flute (Fl), Clarinet (Cl), Bassoon (Fag), Cello (C), Contrabass (Cb), Trumpet (Tr), Trombone (Tromp), and Tuba (Tu). The vocal line is marked with *al* and *mes*. The score includes various musical notations such as notes, rests, and dynamic markings. A large bracket groups the first 16 staves. The word *mes* is written in large cursive at the bottom of the page.



Handwritten musical score for orchestra, featuring staves for Flute (Fl), Oboe (Ob), Clarinet (Cl), Bassoon (Fag), Trumpet (Tr), Trombone (Tromp.), Horns (I, II, III), and Bass (B.). The score includes various musical notations such as notes, rests, and dynamic markings like *dim* (diminuendo) and *col* (colla parte).

Handwritten musical score for orchestra and voice. The score is written on ten staves. The instruments listed on the left are: Flute (Fl), Oboe (Ob), Clarinet (Cl), Bassoon (Fag), Cello (C), Double Bass (Ba), Trumpet (Tr), Trombone (Trom), Violin I (I), Violin II (II), Viola (V), and Bassoon (B). The music includes various notes, rests, and dynamic markings such as *p* and *ma*. The score is divided into measures by vertical bar lines.

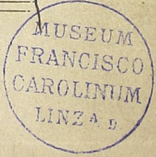


H
A
Fag
C
Tr
Tym
Ta
I
II
III
C
B

Handwritten musical score for multiple instruments. The score is written on 24 staves. The instruments are: Flute (Fl), Clarinet (Cl), Bassoon (Fag), Cello (C), Trumpet (Tr), Trombone (Tym), and Percussion (Ta). The score includes various musical notations such as notes, rests, and dynamic markings. The dynamic markings include *ar*, *cresc*, *al I^{mo}*, *dim*, and *crescendo sempre*. The score is written in a cursive style.

9/11

Handwritten musical score for orchestra, including parts for Flute (Fl), Oboe (Ob), Clarinet (Cl), Bassoon (Fag), Corno (C), Trombone (T), Trumpet (Tromp), and Bass (Ba). The score is written on ten staves. The first staff (Flute) contains a long melodic line starting with a *p* dynamic marking and a slur. The second staff (Oboe) contains a similar melodic line. The third staff (Clarinet) and fourth staff (Bassoon) contain melodic lines with the instruction *legato*. The fifth staff (Corno) and sixth staff (Trombone) contain melodic lines with the instruction *legato*. The seventh staff (Trumpet) contains a melodic line with the instruction *diminuendo*. The eighth staff (Bass) contains a melodic line with the instruction *col me*. The ninth staff (C) and tenth staff (B) contain melodic lines with the instruction *ppp*.



Handwritten musical score for a symphony. The score is written on ten staves. The instruments are labeled on the left side of the staves: Fl. (Flute), Cl. (Clarinet), Fag. (Bassoon), C. (Cello), Tr. (Trumpet), Tromp. (Trombone), Tr. (Tuba), Sol. Basso (Solo Bass), and B. (Bass). The music is written in a key signature of two flats (B-flat and E-flat) and a common time signature (C). The score includes various musical notations such as notes, rests, and dynamic markings. The first staff (Fl.) has a dynamic marking of *pp* and a *cresc.* marking. The second staff (Cl.) has a dynamic marking of *mf*. The third staff (Fag.) has a dynamic marking of *f* and a *cresc.* marking. The fourth staff (C.) has a dynamic marking of *f* and a *cresc.* marking. The fifth staff (Tr.) has a dynamic marking of *f* and a *cresc.* marking. The sixth staff (Tromp.) has a dynamic marking of *f* and a *cresc.* marking. The seventh staff (Tr.) has a dynamic marking of *f* and a *cresc.* marking. The eighth staff (Sol. Basso) has a dynamic marking of *pp* and a *cresc.* marking. The ninth staff (B.) has a dynamic marking of *pp* and a *cresc.* marking. The score is written in a cursive hand and includes various musical notations such as notes, rests, and dynamic markings.

Handwritten musical score for orchestra. The score is written on ten staves, labeled on the left as follows: Fl, O, Cl, Fag, C, C, Tr, Timp, Tr, I, II, III, O, B. The notation includes various musical symbols such as notes, rests, and dynamic markings. Key markings include *ppp* (pianissimo) and *pp* (piano) in the woodwind and percussion parts. The strings (I, II, III, O, B) have *ppp* markings and some notes with *al Basso* (allegro molto) or *al Basso* (ad libitum) instructions. The word *al Basso* is written across the string staves in the middle section. The word *al Basso* is also written across the string staves in the final section. The word *al Basso* is written across the string staves in the final section. The word *al Basso* is written across the string staves in the final section.

1^{mo} Solo

1^{mo} Solo

1^{mo} Solo

al Basso

al Basso

al Basso



1
2
3
4
5
6
7
8
9
10
11
12
13
14
15
16
17
18
19
20
21
22
23
24
25
26

<i>Fl</i>			<i>Solo</i>				
<i>O</i>	<i>Imo</i>	<i>ppp</i>	<i>Solo</i>				
<i>Cl</i>				<i>Imo Solo</i>	<i>ppp</i>	<i>Imo Solo</i>	<i>ppp</i>
<i>Fag</i>							
<i>C</i>						<i>ppp</i>	
<i>C</i>							
<i>Tr</i>							
<i>Tymp</i>						<i>Tromboni</i>	<i>ppp</i>
<i>Tr</i>						<i>Tymp.</i>	
I	<i>ppp</i>						
II	<i>ppp</i>				<i>ppp</i>	<i>ppp</i>	
III	<i>ppp</i>						<i>ppp</i>
C	<i>ppp</i>						
B	<i>ppp</i>						

Te
o
A.
Fag
C
C
Tr
Tymp
Tr
C
B

Handwritten musical score for various instruments. The score includes dynamic markings such as *p*, *mp*, and *cresc*. The instruments listed on the left are Te, o, A., Fag, C, C, Tr, Tymp, Tr, C, and B. The notation is dense and includes various rhythmic values and phrasing marks.



Handwritten musical score for orchestra, featuring staves for Flute (Fl), Oboe (Ob), Clarinet (Cl), Bassoon (Fag), Trumpet (Tr), Trombone (Tromp), and Bassoon (Fag). The score includes dynamic markings such as *diminuendo*, *mf*, *dim*, *resc*, and *f*. The notation is dense, with many notes and rests, and includes a large bracketed section at the bottom.

10/2

Handwritten musical score for a symphony, featuring multiple staves with various instruments and a Bassoon part. The notation includes notes, rests, and dynamic markings such as *desi*, *a2*, and *a3*. The score is written in a cursive style on aged paper.



Fl

O

Cl

Fag

C

C

Tp

Tymp

Tp

I

II

III

C

B

Handwritten musical score for a symphony orchestra. The score is written on ten staves, each with a different instrument or section label on the left. The notation includes notes, rests, and dynamic markings. A large bracket at the top right spans across the woodwind and brass staves, with a 'b' (flat) symbol above it. The string section (I, II, III, C, B) is written in a more rhythmic, repetitive style. The overall style is that of a 19th-century manuscript.

Handwritten musical score for orchestra and voice. The score includes parts for Flute (Fl), Oboe (Ob), Clarinet (Cl), Bassoon (Fag), Horn (Hr), Trumpet (Tromp), Trombone (Tromb), Violin I (I), Violin II (II), Viola (Vla), and Cello/Double Bass (C/B). The music is written in 4/4 time with various dynamics and articulations. The vocal line is marked "legato sempre".

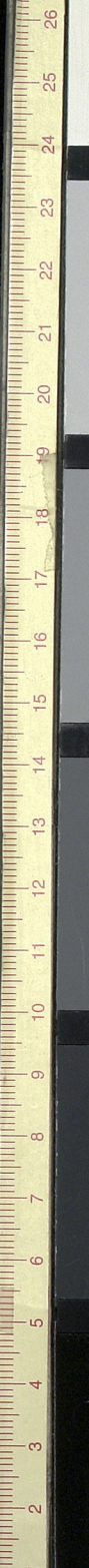


Allegro
Tag
C
C
Tr
Tympan
Sr
= = =
C
B

Handwritten musical score for a symphony movement, featuring multiple staves with notes, rests, and dynamic markings. The score is written on aged paper and includes various musical notations such as clefs, time signatures, and dynamic markings like *ar.* and *ff*. The notation is dense and includes many accidentals and slurs. The score is organized into measures across several staves, with some staves containing rests. The overall style is characteristic of 19th-century manuscript notation.

W/2

Handwritten musical score for multiple instruments. The score includes staves for Flute (Fl), Clarinet (Cl), Saxophone (Sax), Cor (C), Trumpet (Tr), Trombone (Tr), and Bass (B). The music is written in a key with one flat (B-flat) and a 4/4 time signature. The tempo is marked *Andante* (*And.*). The score features dynamic markings such as *pp*, *mf*, *dim*, and *diminuendo*. The word *legato* is written across the top staves. The bottom staff (Bass) includes the instruction *poco a poco diminuendo*. The score is divided into measures by vertical bar lines.



E

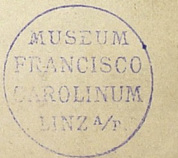
H
O
A
Fag
C
C
Tr
Tymp
Tr
I
II
III
C
B

Handwritten musical score on a page with a vertical ruler on the left. The score consists of 24 staves. The first three staves (H, O, A) have a melodic line starting in the third measure with a *legato* marking. The fourth staff (Fag) has a few notes in the third measure. The fifth and sixth staves (C, C) are mostly empty. The seventh staff (Tr) has a few notes in the third measure. The eighth staff (Tymp) has a few notes in the third measure. The ninth and tenth staves (Tr) have a few notes in the third measure. The eleventh staff (I) has a few notes in the third measure. The twelfth staff (II) has a few notes in the third measure. The thirteenth staff (III) has a few notes in the third measure. The fourteenth staff (C) has a few notes in the third measure. The fifteenth staff (B) has a few notes in the third measure. The sixteenth staff has a *pp* marking and a *pizz* marking. The seventeenth staff has a *pp* marking and a *pizz* marking. The eighteenth staff has a *pp* marking and a *pizz* marking. The nineteenth staff has a *pp* marking and a *pizz* marking. The twentieth staff has a *pp* marking and a *pizz* marking. The twenty-first staff has a *pp* marking and a *pizz* marking. The twenty-second staff has a *pp* marking and a *pizz* marking. The twenty-third staff has a *pp* marking and a *pizz* marking. The twenty-fourth staff has a *pp* marking and a *pizz* marking.

Handwritten musical score for orchestra and strings. The score is written on 24 staves, numbered 1 through 24 on the left margin. The instruments listed on the left are:

- Fl
- O
- Cl
- Fag
- C
- C
- Tr
- Tymp
- Tr
- I
- II
- III
- col Basso
- B

The score includes various musical notations such as rests, notes, and dynamic markings. The word "cresc" (crescendo) is written in several places, notably on staves 4, 7, and 8. The bottom staves (I, II, III, col Basso, B) show rhythmic patterns with stems and flags.

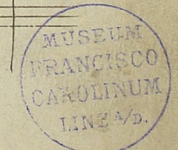


Handwritten musical score for orchestra and strings. The score is written on 24 staves. The instruments are labeled on the left side of the staves:

- Fl (Flute)
- Jt (Jubilee Trumpet)
- Cl (Clarinet)
- Fag (Bassoon)
- C (Cello)
- C (Contra Bass)
- Tr (Trumpet)
- Tymp (Tympani)
- Tr (Trombone)
- I (Violin I)
- II (Violin II)
- III (Violin III)
- C (Cello)
- B (Bass)

The score includes various musical notations such as notes, rests, and dynamic markings. The word "decresc" is written above the first five staves. The word "ar" is written above the first staff in the second measure. The word "col Bass" is written above the Cello staff. The score is divided into measures by vertical bar lines.

Handwritten musical score for a full orchestra. The score is arranged in systems. The top system includes parts for Flute (Fl), Oboe (Ob), Clarinet (Cl), Bassoon (Fag), Corno (C), Trumpet (Tr), Trombone (Tromp), and Snare Drum (Tr). The bottom system includes parts for Violin I (I), Violin II (II), Violin III (III), Cello (C) labeled "col Basso", and Bass (B). The music is written in a key with one flat (B-flat) and a 2/2 time signature. The score features complex rhythmic patterns, including sixteenth and thirty-second notes, and rests. There are dynamic markings such as *dim* (diminuendo) and *mp* (mezzo-piano). The notation includes various clefs, accidentals, and articulation marks.



Fl

O

A

Fag

C

C

Tr

Tymp

Tr

I

II

III

C

B

Handwritten musical score for orchestra. The score is written on 24 staves. The instruments listed on the left are: Flute (Fl), Oboe (O), Clarinet (A), Bassoon (Fag), Horns (C), Trumpets (Tr), Trombones (Tr), Timpani (Tymp), and Percussion (C, B). The score includes dynamic markings such as *Dolce* and *a2* (second ending). There are also performance instructions like *mesco* and *de*. The notation is in a key with one sharp (F#) and a 4/4 time signature. The score is divided into measures by vertical bar lines.