

(Largo)

Handwritten number 8 in the left margin.

Measures 1-15 of the Largo section. The music is in bass clef, D major, and common time. It begins with a *poco f* dynamic and ends with a *p* dynamic. Measure numbers 5 and 10 are indicated above the staff. A *cresc.* marking is present below measure 10. The piece concludes with a double bar line.

BIZZARRIA. Presto

Measures 1-15 of the Bizzarrìa section. The music is in bass clef, D major, and common time. It begins with a *f* dynamic and ends with a *p* dynamic. Measure numbers 5, 10, and 15 are indicated above the staff. Dynamics include *f*, *piano*, and *cresc.*. The piece concludes with a double bar line.

20

f

f

25

p

cresc.

cresc.

30

f p

forte

35

forte

forte

forte

40

forte

↓
ANDAMENTO Largo

103

p *cresc.*

10 *p*

cresc.

20 *f*

30

mf

cresc.

p

SCHERZO. Presto

poco f

10

piano

20

forte *piano*

forte

30

piano

40

piano *forte*

piano

Il Scherzo da capo

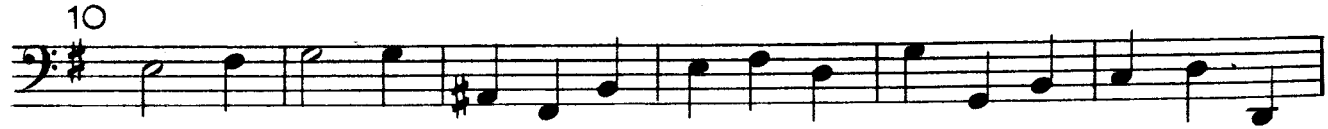
INVENZIONE OTTAVA

E-MOLL

(Andante)




First staff of music in bass clef, 3/4 time signature, key of E minor. It begins with a half rest followed by a half note G3. The music is marked *f dolce*.



Second staff of music, starting at measure 10. It continues the melodic line with various rhythmic values and accidentals.



Third staff of music, starting at measure 20. It features a crescendo leading to a *f* dynamic. The marking *p* appears at the beginning of the staff.



Fourth staff of music, continuing the piece with a *f* dynamic marking.



Fifth staff of music, starting at measure 30. The piece continues with a steady melodic flow.



Sixth staff of music, concluding the section with a *p* dynamic marking.

Balletto



Seventh staff of music, beginning the Balletto section in 6/8 time signature. It is marked *mf*.



Eighth staff of music, continuing the Balletto with a *f* dynamic marking.



Ninth staff of music, starting at measure 5. The piece continues with a consistent melodic pattern.



Tenth staff of music, starting at measure 10. It concludes with a double bar line and repeat dots. The marking *mf* is present.

mf *cresc.* *f*

15 *mf*

20 *piano*

ADAGIO (quasi Recitativo)

mf 5

10 *f*

15 *mf* *cresc.*

20 *f* *p* *pp*

GIGA

f 12

5 *piano* *forte*

10 *piano*

f *piano* *forte*

15

piano *forte*

piano *f*

20

20

25

25

piano *f*

piano

30

f

35 *piano*

forte *(allargando)*

INVENZIONE NONA

A-DUR

Andamento

1

p (*legato*)

10

mf

20

f

30

p

pp (*allargando*)

SCHERZO (Allegro non presto)

First musical staff in bass clef with a key signature of two sharps (F# and C#) and a common time signature (C). The staff contains a series of eighth and sixteenth notes. Below the staff is the dynamic marking *f* (2. Mal *p*).

Second musical staff in bass clef with a key signature of two sharps and a common time signature. It continues the melodic line from the first staff.

5

Third musical staff in bass clef with a key signature of two sharps and a common time signature. It begins with the number 5 above the staff.

Fourth musical staff in bass clef with a key signature of two sharps and a common time signature. It continues the melodic line.

10

Fifth musical staff in bass clef with a key signature of two sharps and a common time signature. It begins with a repeat sign and the number 10 above the staff. The dynamic marking *f* is placed below the staff.

Sixth musical staff in bass clef with a key signature of two sharps and a common time signature. It continues the melodic line.

Seventh musical staff in bass clef with a key signature of two sharps and a common time signature. It continues the melodic line. The dynamic marking *p* is placed below the staff.

15

Eighth musical staff in bass clef with a key signature of two sharps and a common time signature. It begins with the number 15 above the staff. The dynamic marking *cresc.* is placed below the staff.

Ninth musical staff in bass clef with a key signature of two sharps and a common time signature. It continues the melodic line. The dynamic marking *piano* is placed below the staff.

20

Tenth musical staff in bass clef with a key signature of two sharps and a common time signature. It begins with the number 20 above the staff. The staff concludes with a double bar line and repeat dots.

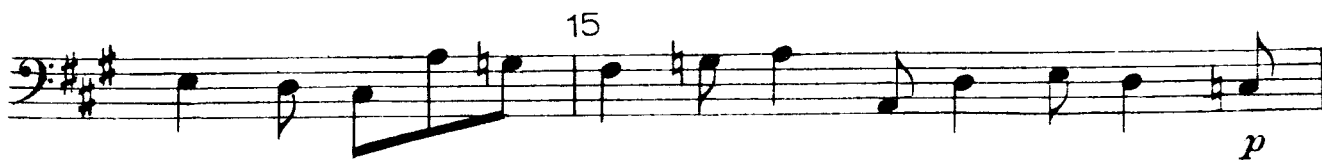
GRAVE



SICILIANA



10





GRAVE



CAPRICCIO. (Allegro)

f

5

mf cresc.

f

10

f

15



20



piano



forte



piano

25



forte



piano

30



pp

INVENZIONE DECIMA

E-DUR

Largo

f

5

meno f

10

cresc.

f

piano

15

BALLETTTO. Allegro

poco f

p

5

cresc.

10

poco f

p

cresc.

15

f

ECCO. Adagio

5

10

15

f *piano* *forte*

f

f

piano

CORRENTE

10

20

30

40

50

f *mf* *cresc.*

f

f *p*

f *piano* *forte*

Il Fine