

COLLECTION MUSICALE EN FORMAT NUMÉRIQUE  
MUSIQUE VOCALE DE STYLE CONCERTANT

**Giovanni Battista Riccio (15..-16..)**

# **O pretiosum et admirandum convivium**

a doi Basso & Canto overo Tenore





13

Al - le - lu - ia Al - le - lu - ia Al - le - lu - ia Al - le - lu - ia

lu - ia Al - le - lu - ia Al - le - lu - ia

6# 6

20

lu - ia Al - le - lu - ia Sa - lu - ti - fe - rum et om - ni su -

lu - ia Al - le - lu - ia Sa - lu - ti - fe - rum et om - ni su -

6 6

29

lu - ti - fe - rum et om - ni su - a - vi - ta - te re - ple - tum

a - vi - ta - te re - ple - tum su - a - vi - ta - te re - ple - tum

# # 6

38

Al - le - lu - ia Al - le - lu -

Al - le - lu - ia Al - le - lu - ia

43

ia Al - - - le - lu - ia O O pi-e-  
Al - - - le - lu - ia Al - le - lu - ia O O pi-e-  
# #

51

ta - tis sa-cra-men - tum sa - - - cra - men - tum et vin - cu-lum et vin - cu-lum  
ta - tis sa-cra-men - tum sa - cra - men - - - tum et vin - cu - lum et vin - cu - lum cha-ri -  
6 # 6 7 6 5

60

cha-ri - ta - - - - tis cha - ri - ta - tis

ta - tis cha - ri - ta - - - - tis Al - le - lu - ia

7 6 5

68

Al - le - lu - ia Al - le - lu - ia Al - le - lu - ia

Al - le - lu - ia Al - le - lu - ia Al - le - lu - ia Al - le - lu - ia

75

ia Al-le-lu-ia Al-le-lu-ia Al-le-lu-ia Al-le-lu-ia Al-le-lu-ia

ia Al-le-lu-ia Al-le-lu-ia Al-le-lu-ia Al-le-lu-ia Al-le-lu-

4 4

80

Al-le-lu-ia Al-le-lu-ia Al-le-lu-ia Al-le-lu-ia.

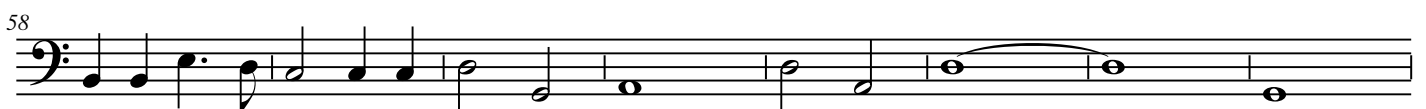
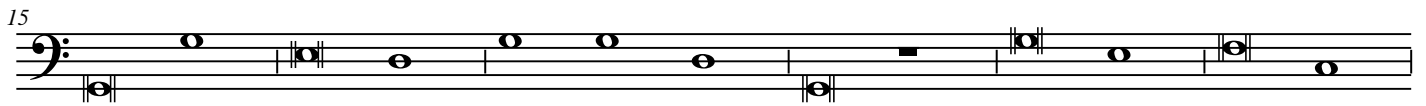
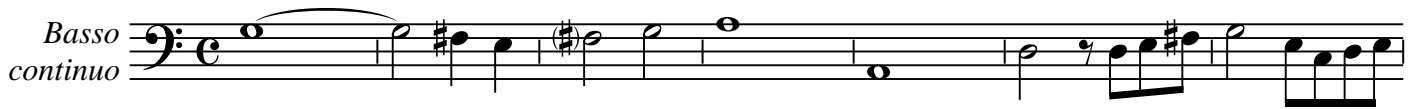
ia Al-le-lu-ia Al-le-lu-ia Al-le-lu-ia Al-le-lu-ia.

4 4 # 6 6 6

Giovanni Battista Riccio (15.-16.)

# O pretiosum et admirandum convivium

a doi Basso & Canto overo Tenore





66

Musical notation for measures 66-69 in bass clef. The piece is in 3/4 time. Measure 66 starts with a half rest, followed by quarter notes G2, A2, and B2. Measure 67 has a half note C3, quarter notes D3 and E3. Measure 68 has a half note F3, quarter notes G3 and A3. Measure 69 has a half note B3, quarter notes C4 and D4.

70

Musical notation for measures 70-74 in bass clef. Measure 70 has a half note E3, quarter notes F3 and G3. Measure 71 has a half note A3, quarter notes B3 and C4. Measure 72 has a half note D4, quarter notes E4 and F4. Measure 73 has a half note G4, quarter notes A4 and B4. Measure 74 has a half note C5, quarter notes D5 and E5.

75

Musical notation for measures 75-79 in bass clef. Measure 75 has a quarter note G4, eighth notes A4, B4, and C5. Measure 76 has a quarter note D5, eighth notes E5, F5, and G5. Measure 77 has a quarter note A5, eighth notes B5, C6, and D6. Measure 78 has a quarter note E6, eighth notes F6, G6, and A6. Measure 79 has a quarter note B6, eighth notes C7, D7, and E7.

80

Musical notation for measures 80-83 in bass clef. Measure 80 has a quarter note G4, eighth notes A4, B4, and C5. Measure 81 has a quarter note D5, eighth notes E5, F5, and G5. Measure 82 has a quarter note A5, eighth notes B5, C6, and D6. Measure 83 has a quarter note E6, eighth notes F6, G6, and A6, followed by a double bar line.