

Der Messias

Oratorium

W.A.Mozart

PARTE PRIMA

Nº 1 - Nº 6 : *tacet*

Nº 7 Recitativo accompagnato

Andante Larghetto

23

Aria

Larghetto

1

Musical notation for the beginning of the recitativo and aria. The recitativo is marked (Viol. I. Va.) and the aria is marked Viol. I.

Musical notation for the vocal line, starting at measure 55. The lyrics are: *Basso: es schei - net, es schei-net hel - le ü - ber sie*

Musical notation for the vocal line, starting at measure 60.

Nº 8 Coro in Re/D

Andante Allegro

11

Musical notation for the beginning of the chorus, marked cor. and starting at measure 11.

Musical notation for the chorus, starting at measure 15. The key signature changes to B-flat major (one flat).

Musical notation for the chorus, starting at measure 33. The key signature changes to C major (no sharps or flats).

Musical notation for the chorus, starting at measure 38. The key signature changes to D major (two sharps). The dynamic marking is *f*.

Musical notation for the chorus, starting at measure 52. The dynamic marking is *f*.

Clarino I

2

Musical score for Clarino I, measures 68-96. The score consists of six staves of music in treble clef. Measure 68 starts with a forte (f) dynamic. Measure 77 contains a first ending bracket labeled '6'. Measure 87 contains a first ending bracket labeled '7'. Measure 96 ends with a double bar line.

Nº 9 Pifa : *tacet*

Recitativo : *tacet*

Nº 10 Recitativo accompagnato : *tacet*

Recitativo : *tacet*

Nº 11 Recitativo accompagnato

Andante

Musical score for Nº 11, measure 6. The staff is in treble clef with a common time signature (C). It begins with a first ending bracket labeled '6'.

Sopr. II : die lob - ten Gott und spra - chen:

Nº 12 Coro

[in Re/D]

Musical score for Nº 12, measure 4. The staff is in treble clef with a common time signature (C). It begins with a first ending bracket labeled '4'.

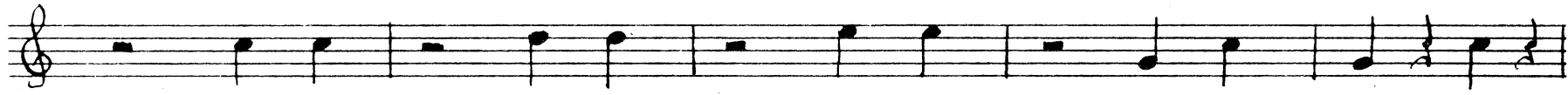
14

Musical score for Nº 12, measure 9. The staff is in treble clef with a common time signature (C). It begins with a first ending bracket labeled '9'.


27

Musical score for Nº 12, measure 5. The staff is in treble clef with a common time signature (C). It begins with a first ending bracket labeled '5'.

35



40



Nº 13 - Nº 15 : *tacet*

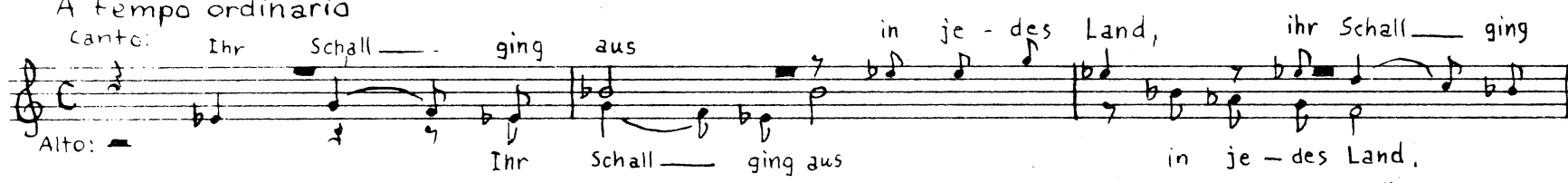
PARTE SECONDA

Nº 16 - Nº 27 : *tacet*

Nº 28 Coro

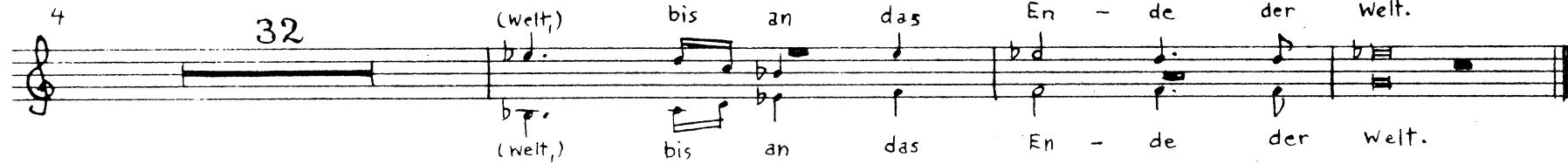
A tempo ordinario

canto:



Ihr Schall — ging aus in je - des Land, ihr Schall — ging

Alto:



Ihr Schall — ging aus in je - des Land,
(welt,) bis an das En - de der Welt.

Nº 29 Aria

In Do/C

Allegro



4



32



5



11



26

mf

Clarino I

4

Musical score for Clarino I, measures 36-73. The score is written on a single staff in treble clef. Measure 36 is marked with 'Fl. I.' and 'tr'. Measure 42 has a dynamic marking of 'f' and a first ending bracket labeled '11'. Measure 67 has a dynamic marking of 'p'. Measure 73 has a dynamic marking of 'f' and a first ending bracket labeled '19'. The piece concludes with 'Fine' and 'da capo' instructions.

Nº30 Coro: *tacet*

Recitativo: *tacet*

Nº31 Aria (Tenore, Fl. I): *tacet*

Nº32 Coro

in Re / D

Musical score for Coro, measures 1-31. The score is written on a single staff in treble clef. Measure 8 has a dynamic marking of 'f' and a first ending bracket labeled '8'. Measure 17 has a dynamic marking of 'f' and a first ending bracket labeled '2'. Measure 22 has a dynamic marking of 'f' and a first ending bracket labeled '1'. Measure 27 has a dynamic marking of 'f'. Measure 31 has a dynamic marking of 'f' and a first ending bracket labeled '3'. The score is marked 'Cor. I' and 'Viol. I'.

Clarino I

38

9
Cor.

52

56

60

64

68

4

76

80

84

88

91

Fine della seconda parte

Clarino I

6

PARTE TERZA

Nº 33 Aria (Sopr.I): *tacet*

Nº 34 Coro (Coro primo, Coro secondo, Coro terzo, Coro quarto „durch christum auferweckt“): *tacet*

Nº 35 Recitativo accompagnato ed Aria

in Re / D

Aria †)

in Re / D

Pomposo ma non allegro

†) Vgl. Mozarts erste und zweite Fassung, Anhang S. 10 - 13

Clarino I

40

46

51

Solo

56

61

68

Adagio

Primo tempo

Tutti

73

Solo

78

Tutti

Recitativo: *tacet*

Nº 36 Duetto (Soprano II - Tenore); *tacet*

Clarino I

Nº 37 Coro: tacet

Recitativo accompagnato
Adagio

10

Sopr. I Wenn Gott ist für uns, wer Got-tes, und der ist — ein Mitt-ler für uns.

Nº 38 Coro

in Re/De

Largo

Cor. I

Andante Largo Andante

4 5 7 5

24 Larghetto

Fag. Cor.

9

37

10' Cor.

57

2

f

56

60

5

f

68

Adagio

Clarino I

Coro ultimo

in Re/D

Allegro moderato

26

Fag. Viol. I

31

f

36

2

42

2 4

52

5 4

64

1

69

74

79

84

Adagio

Fine

Clarino I

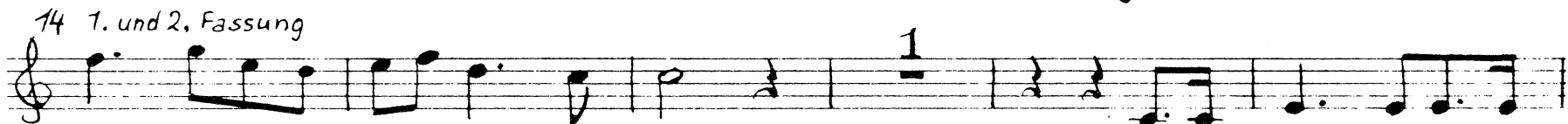
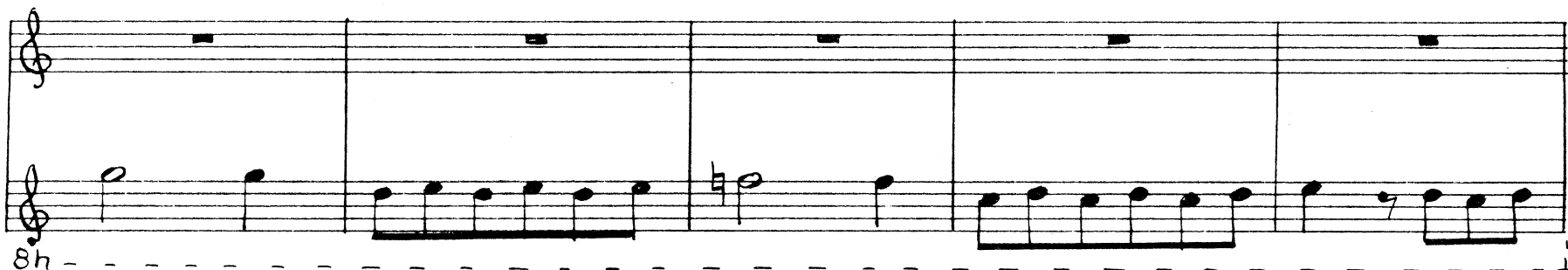
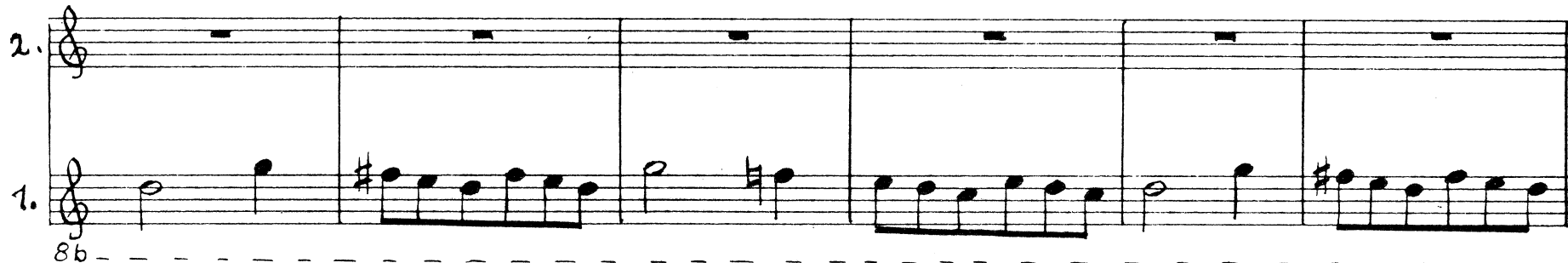
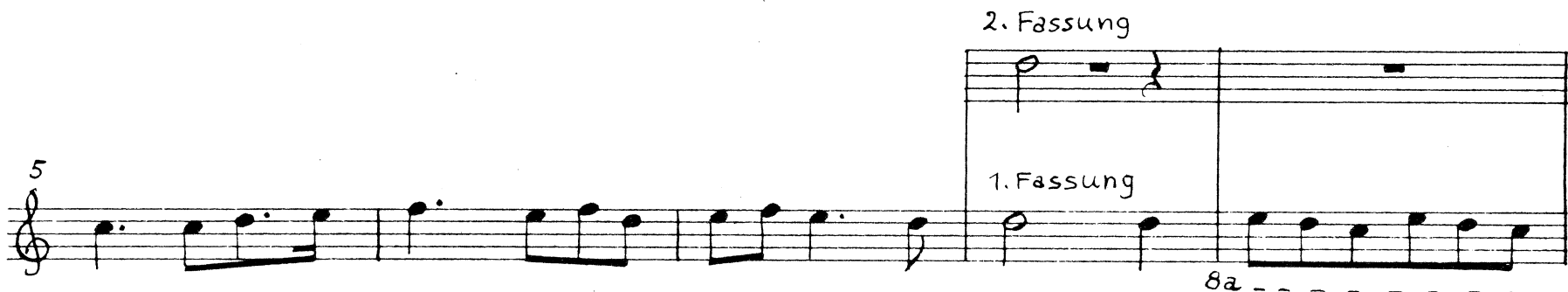
10

ANHANG

Mozarts erste und zweite Fassung der Arie
„Sie schallt die Posaun“

in Re/D

Pomposo, ma non allegro
1. u. 2. Fassung



Clarino I

2. Fassung

20

1. Fassung Solo

1

26

1. u. 2. Fassung

5

f

36

p

39a

40 2. Fassung

43

2

1. Fassung

42a

2

2.

7

f

1.

7

f

44a

1. u. 2. Fassung

Solo

45

440

46

1

1

Clarino I

12

50

Solo

55

55a

56 2. Fassung

1. Fassung

58a

58c

Solo

58h

58o

2. Fassung

1.2. 58u

1. Fassung

1. u. 2. Fassung 59

60

65 2. Fassung

1. Fassung

66a

67

69 Adagio

1. u. 2. F. 1

Primo Tempo

f

74

74a

2. Fassung

75 Solo

1. Fassung solo

f

74d

79

Der Messias

Oratorium

W.A.Mozart

PARTE PRIMA

Nº 1 - Nº 6: *tacet*

Nº 7 Recitativo accompagnato Aria

Andante Larghetto

23

1 Larghetto

(Viol. I, Va.)

Viol.

3 55

viol. I

Basso: es schei - net, es schei-net hel - le ü - ber sie

60

Nº 8 Coro in Re/D

Andante Allegro

11

cor.

15

Viol. Va.

14

Viol. I

33

in Do/C

38

10

Viol. I

f

52

13

Viol. I

Clarino II

68

72

77

87

91

96

Nº 9 Pifa: *tacet*

Recitativo: *tacet*

Nº 10 Recitativo accompagnato: *tacet*

Recitativo: *tacet*

Nº 11 Recitativo accompagnato
Andante

Sopr. II: die lob - ten Gott und spra - chen:

Nº 12 Coro

in Re/D

Clarino II

35

40

Nº 13 - Nº 15: *tacet*

PARTE SECONDA

Nº 16 - Nº 27: *tacet*

Nº 28 Coro

A tempo ordinario

Canto: Ihr Schall ging aus in je - des Land, ihr Schall ging

Alto: =

Ihr Schall ging aus in je - des Land.

(Welt) bis an das
(Welt) bis an das En - de der Welt.

Nº 29 Aria

in Do/C

Allegro

4

32

5

11

26

Clarino II

4

Musical score for Clarino II, measures 36-73. The score is written on four staves. Measure 36 is marked with 'Fl. I.' and 'tr'. Measure 42 has dynamics 'f' and 'p'. Measure 67 has dynamic 'p'. Measure 73 has dynamic 'f' and 'Fine'. Rehearsal marks are present at measures 11, 10, 19, and 1. The instruction 'da capo' is written at the end of the section.

Nº30 Coro: *tacet*

Recitativo: *tacet*

Nº31 Aria (Tenore, Fl. I): *tacet*

Nº32 Coro

in Re / D

Musical score for Coro, measures 1-31. The score is written on six staves. Measure 1 is marked with 'Cor. I'. Measure 8 is marked with 'Viol. I'. Rehearsal marks are present at measures 2, 1, and 3. The score includes various rhythmic patterns and dynamics.

Clarino II

38

9

Cor.

52

56

60

64

68

76

80

84

88

97

Fine della seconda parte

Clarino II

6

PARTE TERZA

Nº 33 - Nº 37 : *tacet*

Recitativo accompagnato

Adagio

10

Sopr. I: Wenn Gott ist für uns, wer Got-tes, und der ist ein Mitt-ler für uns.

Nº 38 Coro

in Re/D

Largo

Cor. I

4 5 7 5

24 Larghetto

Fag.

9

Cor.

37

10

Cor.

57

2

f

56

60

5

f

68

Adagio

Clarino II

Coro ultimo

in Re/D

Allegro moderato

26

Fag. Viol. I

31

f

36

42

52

64

69

74

79

84

Adagio

Fine