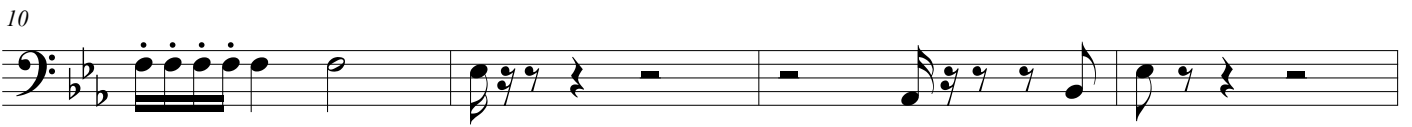
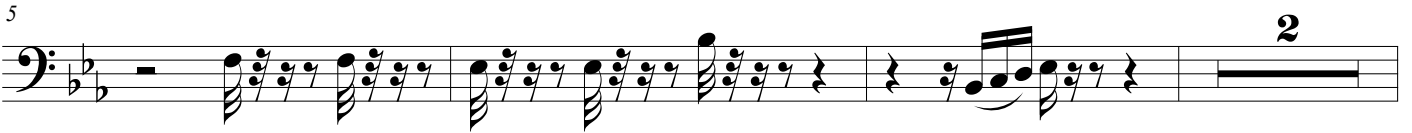


# 遼闊中國

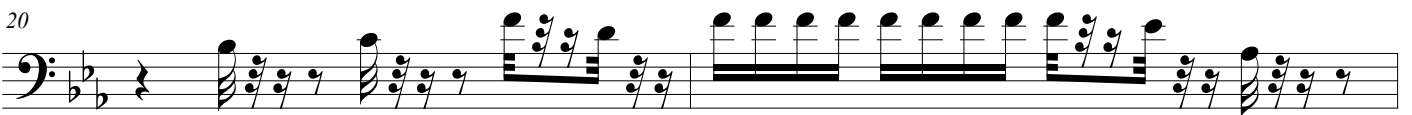
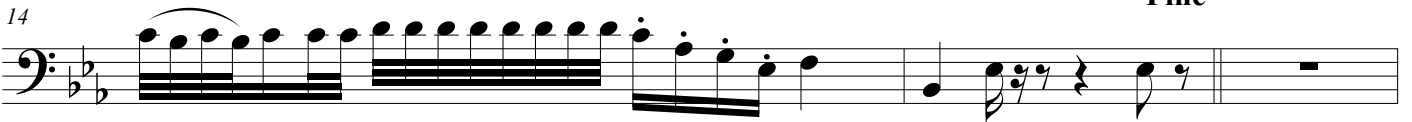
Double Bass

Cheng-Shiun

Overture  $\text{♩} = 40$



Fine  $\text{♩} = 68$



$\text{♩} = 40$



30

*p* *mp*

$\text{♩} = 68$

33

*mp* *f*

10

47

*mp*

Fine

$\text{♩} = 80$

52

7

62

2 3

70

$\text{♩} = 40$

5 2

79

81

*mf*

To Coda

6

91

5

遼闊中國

99 *rit.* ♩ = 40 7

109 *accel.* ♩ = 68 *mf*

113 ♩ = 40 2

119 ♩ = 68 *mf*

121

124

126

130 4

137

139  $\text{♩} = 68$

*f*

144 pizz. arco

148  $\frac{2}{4}$   $\frac{4}{4}$  3

155 rit.

159  $\text{♩} = 40$

*mp*