

# Requiem

## Introitus / Kyrie

Es-Dur

J.G. Naumann

Adagio

5

9

13

21

25

35

40

44

48

54

58

*f* *p* *f* *p* *f* *p* *f* *p* *f* *p*

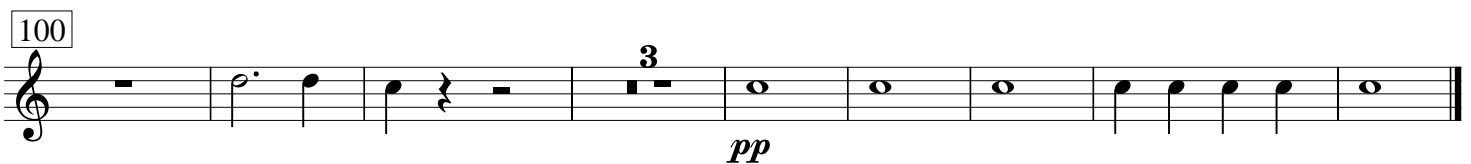
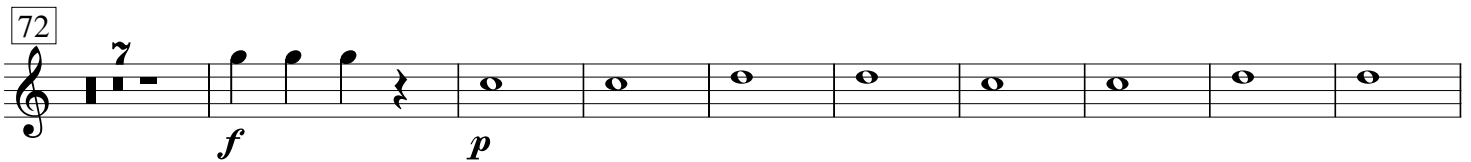
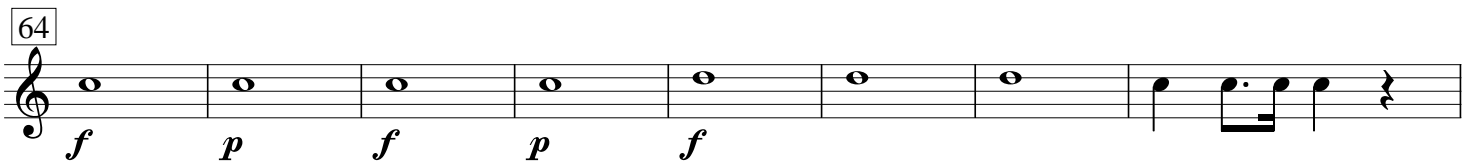
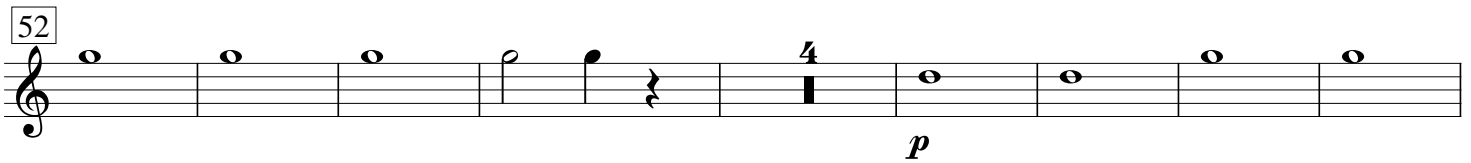
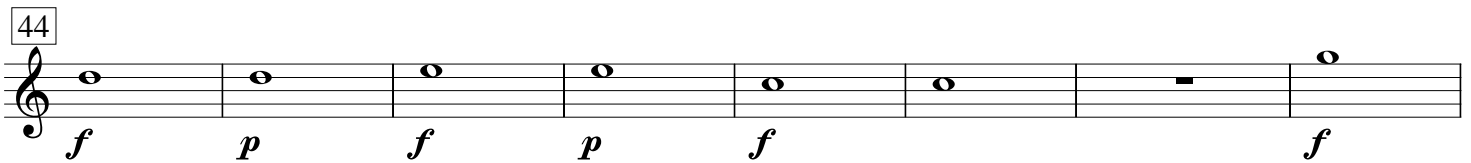
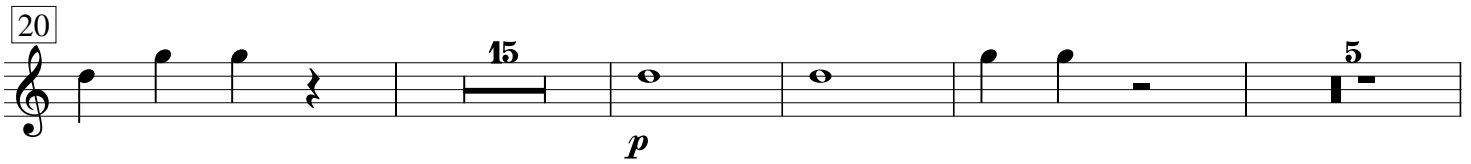
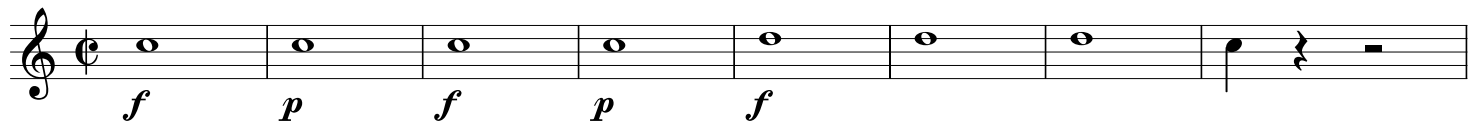
4

7

3

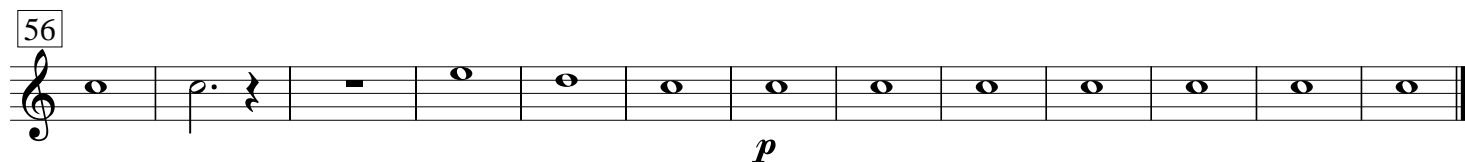
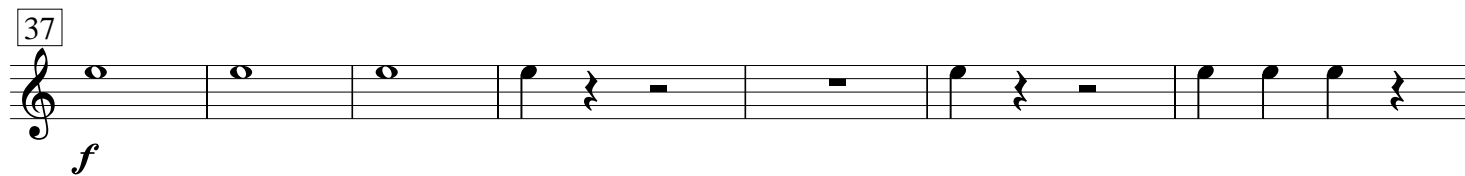
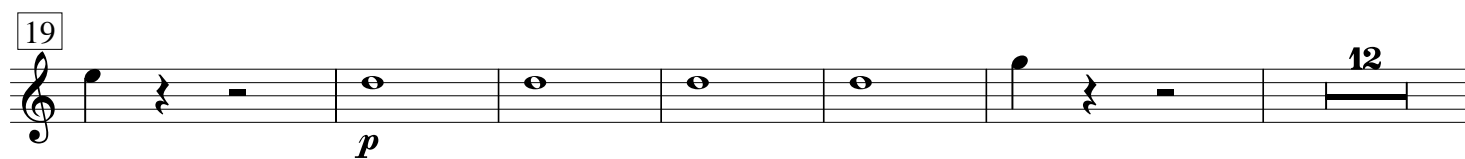
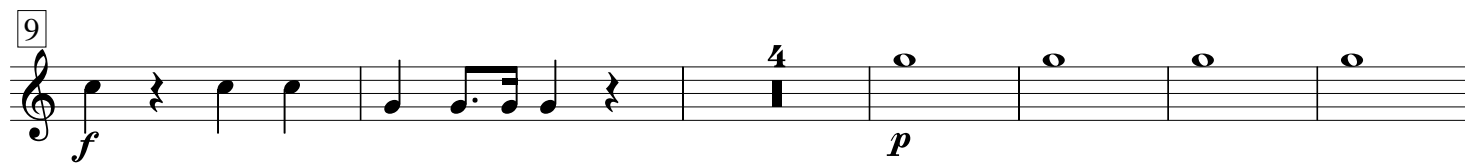
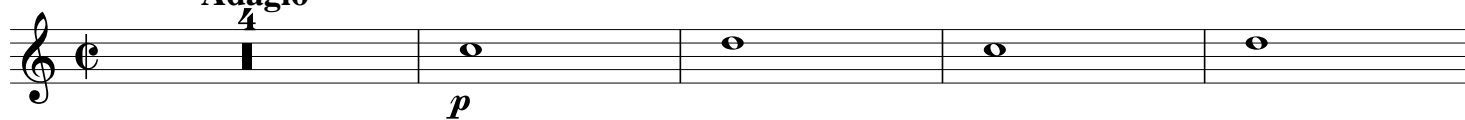
# Sequenz

Maestoso



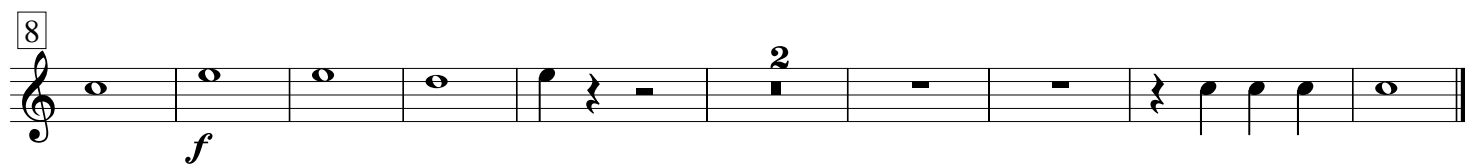
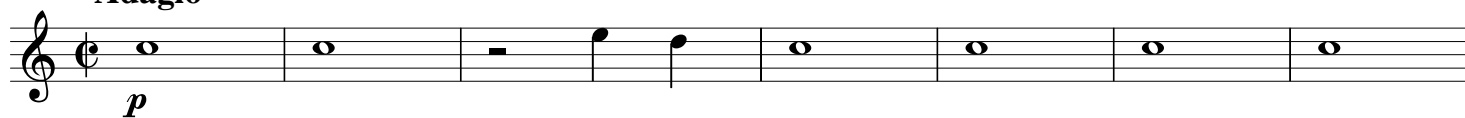
# Offertorium

Adagio



# Sanctus

Adagio



4 Horn in B  
**Benedictus**

Andante

2

*p*

10

13

*p*

30

4

41

5

9

*p*

*p*

61

2

*p*

69

*p*

Horn in Es  
**Agnus Dei**

Adagio

4

8

17

*p*

24

4

*p*

34

3

*p*

44

50

*p*