

Violonchelos

# FRUSTRACIÓN

(Basado en "YERMA" de Federico G. Lorca)

MARTÍN JOSÉ RODRÍGUEZ PERIS

Andante  $\text{♩} = 60$

Allegro  $\text{♩} = 140$   
non divisi

22

*ff*

26

30

35

42

*mf*

49

Pizz

*pp*

53

cres

57

Arco

divisi

3

3

Pizz

*mf*

*p*

62

Violoncelos

66 *cres* *mf* *p* Arco divisi 3 3 9

79 3

86 *cres* *f*

90 Divisi

95

99

103 *pp* Pizz

107 *cres* *mf* Arco

112 *p* divisi 3 3 Pizz

116 *cres*

120 *mf* *p* *mf* Arco Divisi 3 3 Marcato

Violonchelos

125

130

135

140

145

153

158

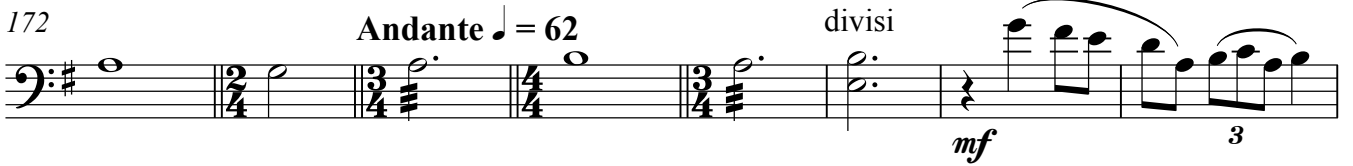
163

167

169



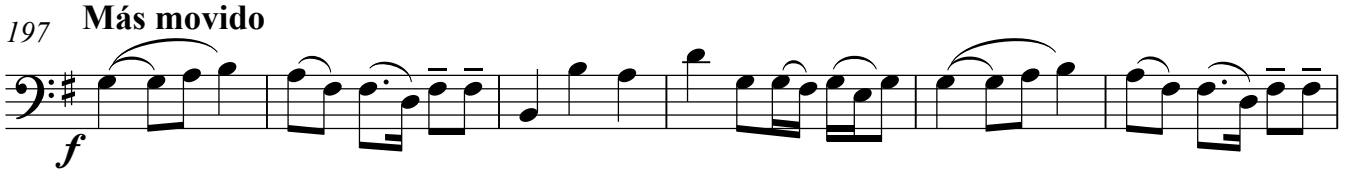
Violonchelos

172 **Andante** ♩ = 62 *divisi*  


180 *divisi*  

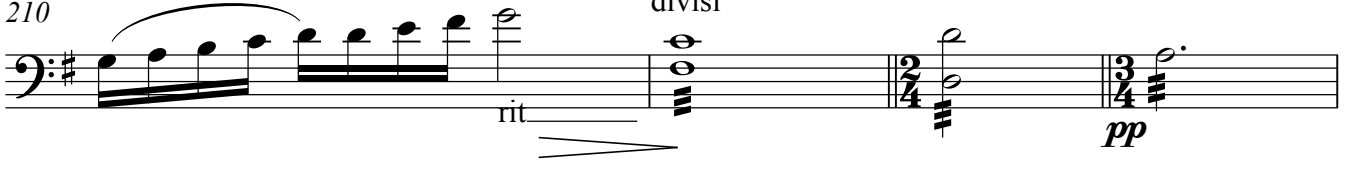

186 *divisi*  


190  


197 **Más movido**  


203 *divisi*  


207  


210 *divisi*  


214 **Allegro** ♩ = 145  


Violonchelos

229



*ff*

*pp*

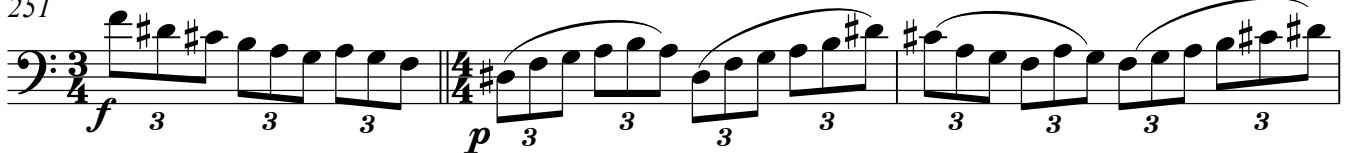
235



244



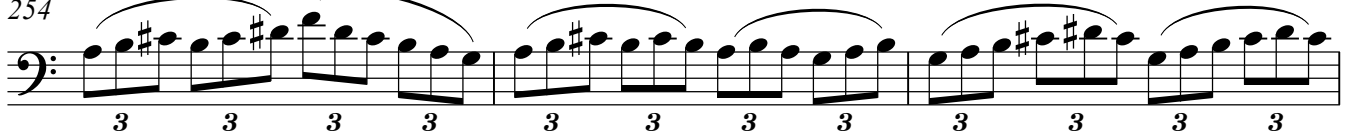
251



*f*

*p*

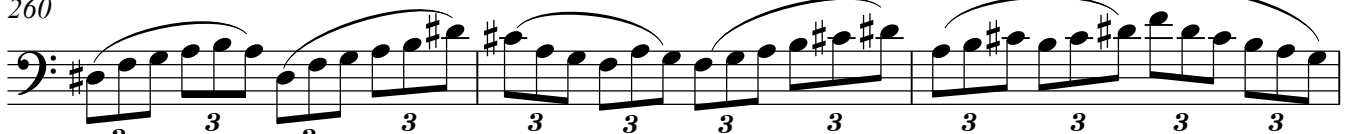
254



257



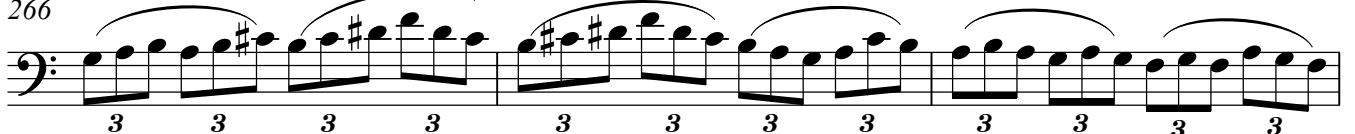
260



263



266



269



*mf*



Violonchelos

273

Measures 273-275: Bass clef, 3/4 time signature. Measure 273 is a whole rest. Measures 274 and 275 consist of eighth notes in groups of three, with a flat (b) above the first note of each group.

276

Measures 276-278: Bass clef, 3/4 time signature. Measures 276-277: Eighth notes in groups of three, with a flat (b) above the first note of each group. Measure 278: A whole note with a flat (b) above it.

281

Measures 281-285: Bass clef, 4/4 time signature. Measure 281: A whole note with a '4' above it. Measure 282: A whole rest with a '5' above it. Measure 283: A whole note with a '4' above it. Measure 284: A quarter note with a sharp (#) above it, followed by a quarter note with a sharp (#) above it, and a quarter note with a sharp (#) above it. Measure 285: Eighth notes in groups of three, with a sharp (#) above the first note of each group. Dynamics: *mf* with a hairpin crescendo leading to *f*.

290

Measures 290-293: Bass clef, 3/4 time signature. Eighth notes in groups of three, with a sharp (#) above the first note of each group.

294

Measures 294-296: Bass clef, 3/4 time signature. Eighth notes in groups of three, with a sharp (#) above the first note of each group.

297

Measures 297-300: Bass clef, 3/4 time signature. Measure 297: A whole note with a sharp (#) above it. Measure 298: A whole rest. Measure 299: Eighth notes in groups of three, with a sharp (#) above the first note of each group. Measure 300: Eighth notes in groups of three, with a sharp (#) above the first note of each group. Dynamics: *mf* with a hairpin crescendo leading to *cres*.

301

Measures 301-303: Bass clef, 3/4 time signature. Eighth notes in groups of three, with a sharp (#) above the first note of each group. Dynamics: *f*.

304

Measures 304-306: Bass clef, 3/4 time signature. Eighth notes in groups of three, with a sharp (#) above the first note of each group.

307

Measures 307-310: Bass clef, 3/4 time signature. Eighth notes in groups of three, with a sharp (#) above the first note of each group.

Violonchelos

310

3 3 3 3 3 3 3 3 3 3 3

313

3 3 3 3 3 3 3 3 3 3 3

316

3 3 3

320

3 3 3 3 3 3 3 3 3 3 3

323

3 3 3 3 3 3 3 3 3 3 3

326

3 3 3 3 3 3 3 3 3 3 3

329

3 3 3 3 3 3 3 3 3 3 3

332

pp

336

25

Violonchelos

364

367

370

374

378

384

388

390

392

394