



319451

# TRIO 1.

## VIOLINO.

J. Haydn.

Andante.

mf

6

p

15

f

p

A

1

p

a)

mf

cresc.

f

3

p

mf

4

6

p

mf

7

8

p

C

f

3

42

p

tr

a)

- 3 -  
VIOLINO.

THE CHAM  
48.0  
F.C.

*f*

*p*

*cresc.*

*cresc.*

*p*

*mf*

Poco Adagio. Cantabile.

*p*

*cresc.*

1.

2.

*p*

*cresc.*

*p*

1.

2.

*p*

*mf*

*p*

*mf*

*cresc.*

*mf*

*p*

*cresc.*

*p*

*pp*

b)





**FINALE.**  
Rondo all' Ungarese.  
Presto.

**VIOLINO.**

*mf*

**H**

*fz fz fz fz*

**J**

*fz*

*fz fz fz*

**K**

*p p f p*

*f p f p*

**Minore.**

*f fz fz fz fz fz*

*fz fz*

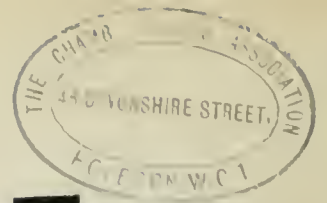
**L**

*pizz. arco pizz. arco pizz. arco pizz. arco*

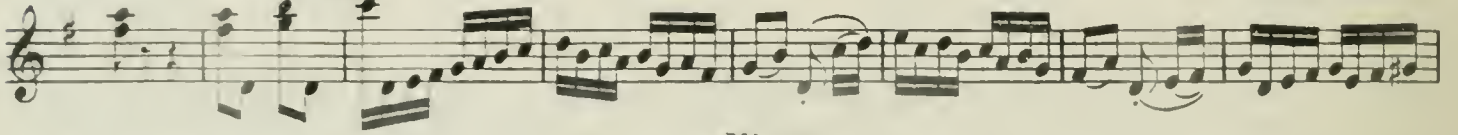
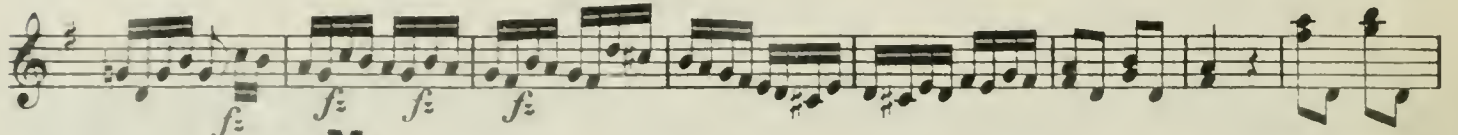
*p f f*

*p*

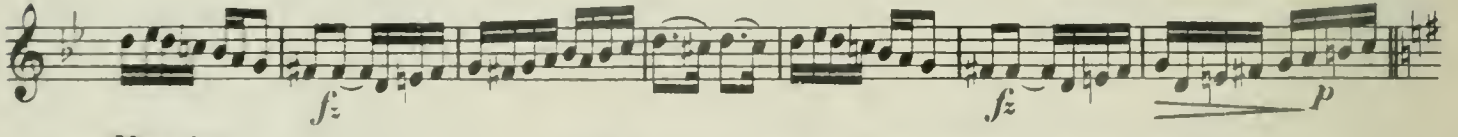
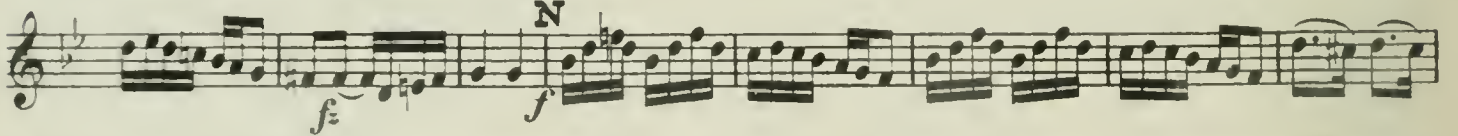
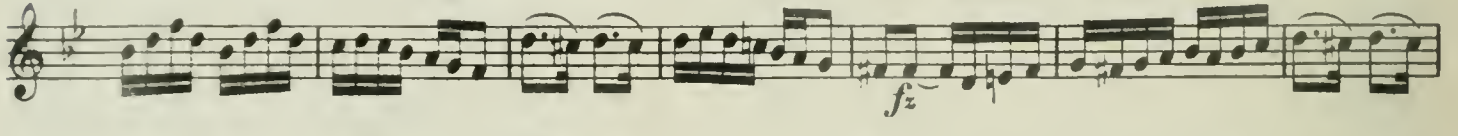
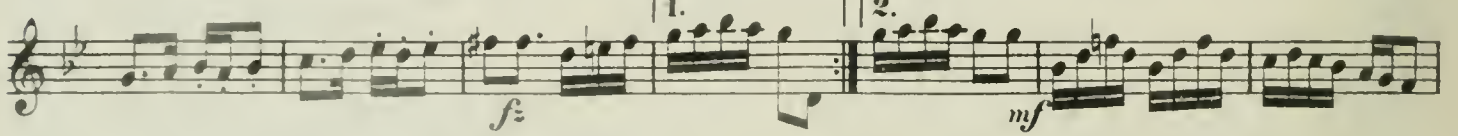
VIOLINO.



Maggiore.



Minore.



Maggiore.

