

# ARIA in G MAJOR

(from: Aria 'Brillava protetto', HWV 113)

for Trumpet and Organ

Score (01':48")

Georg Friedrich Händel (1685 - 1759)

Arr. Michel Rondeau

Allegro moderato ♩ = 90

Trumpet in C

Organ

This system shows the first three measures of the score. The Trumpet in C part is in a whole rest for the first two measures and then plays a quarter note G4 in the third measure. The Organ part consists of a treble and bass staff. The treble staff has a continuous eighth-note accompaniment, with a trill (tr) in the third measure. The bass staff has a simple eighth-note accompaniment.

C Tpt.

Org.

This system covers measures 4 to 6. The C Trumpet part has a melodic line with eighth-note patterns. The Organ part continues with its accompaniment, featuring a trill in the treble staff in measure 5.

C Tpt.

Org.

This system covers measures 7 to 10. The C Trumpet part has a melodic line with eighth-note patterns. The Organ part continues with its accompaniment, featuring a trill in the treble staff in measure 8.

C Tpt.

Org.

This system covers measures 11 to 13. The C Trumpet part has a melodic line with eighth-note patterns. The Organ part continues with its accompaniment, featuring a trill in the treble staff in measure 12.

## ARIA in G MAJOR - HWV 113 - Händel - Score

C Tpt.

Org.

Measures 14-16 of the score. The C Tpt. part begins with a treble clef, a key signature of one sharp (F#), and a common time signature. The melody starts on a half note G4, followed by a quarter note A4, and then a quarter note B4. The organ part consists of two staves: the right hand plays a rhythmic pattern of eighth notes, and the left hand plays a similar pattern. The organ accompaniment is in G major and common time.

C Tpt.

Org.

Measures 17-19 of the score. The C Tpt. part continues with a treble clef, a key signature of one sharp (F#), and a common time signature. The melody features a series of eighth notes and quarter notes, including a sixteenth-note triplet. The organ part continues with a rhythmic pattern of eighth notes in both hands.

C Tpt.

Org.

Measures 20-22 of the score. The C Tpt. part features a long, sustained note on G4 in measure 20, followed by a half note A4 in measure 21, and then a series of eighth notes in measure 22. The organ part continues with a rhythmic pattern of eighth notes in both hands.

C Tpt.

Org.

Measures 23-25 of the score. The C Tpt. part features a series of eighth notes in measure 23, followed by a half note G4 in measure 24, and then a quarter note A4 in measure 25. The organ part continues with a rhythmic pattern of eighth notes in both hands.

ARIA in G MAJOR - HWV 113 - Händel - Score

26

C Tpt.

Org.

*tr* Fine

Fine

30

C Tpt.

Org.

34

C Tpt.

Org.

37

C Tpt.

Org.

*tr*

D.C. al Fine

D.C. al Fine

# ARIA in G MAJOR

(from: Aria 'Brillava protetto', HWV 113)

for Trumpet and Organ

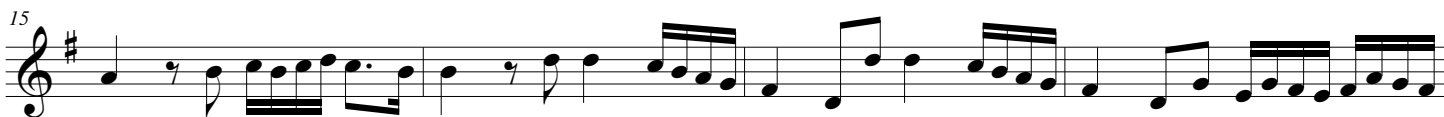
## Trumpet in C

Georg Friedrich Händel (1685 - 1759)

Arr. Michel Rondeau

Allegro moderato  $\text{♩} = 90$

2



Fine



D.C. al Fine

# ARIA in G MAJOR

(from: Aria 'Brillava protetto', HWV 113)

for Trumpet and Organ

## Trumpet in D

Georg Friedrich Händel (1685 - 1759)

Arr. Michel Rondeau

Allegro moderato ♩ = 90

2

6

11

15

19

23

28

34

38

*tr*

*tr*

Fine

D.C. al Fine

# ARIA in G MAJOR

(from: Aria 'Brillava protetto', HWV 113)  
for Trumpet and Organ

Georg Friedrich Händel (1685 - 1759)  
Arr. Michel Rondeau

## Organ

Trumpet in C

Organ

Allegro moderato ♩ = 90

C Tpt.

Org.

C Tpt.

Org.

C Tpt.

Org.

## ARIA in G MAJOR - HWV 113 - Händel - Organ

C Tpt.

Org.

Measures 14-16 of the ARIA in G Major. The C Tpt. part begins with a melodic line starting on G4. The Organ part features a complex texture with sixteenth-note patterns in the right hand and a steady eighth-note accompaniment in the left hand.

C Tpt.

Org.

Measures 17-19. The C Tpt. part continues with a melodic line that includes a sixteenth-note run. The Organ part maintains its intricate texture with sixteenth-note figures in the right hand and eighth-note accompaniment in the left hand.

C Tpt.

Org.

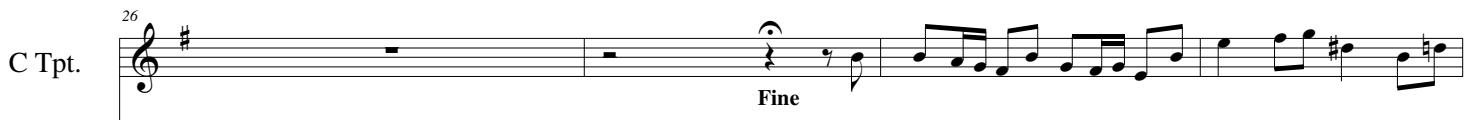
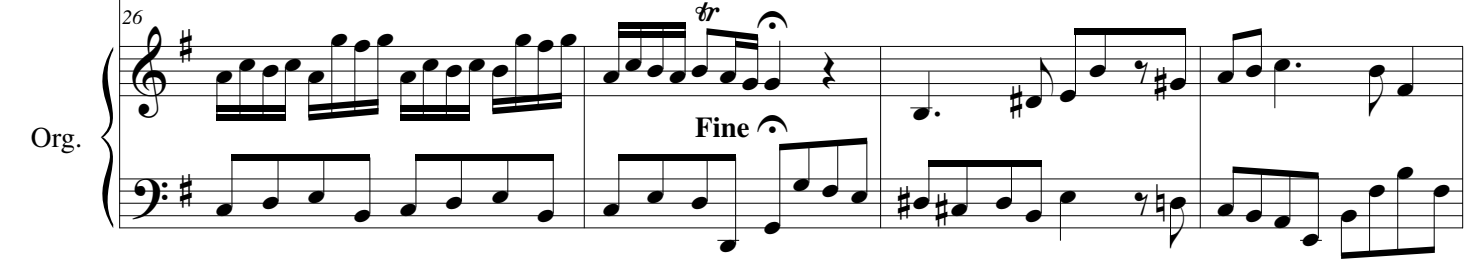
Measures 20-22. The C Tpt. part features a long, sustained note in the first measure followed by a melodic line. The Organ part continues with its characteristic sixteenth-note and eighth-note patterns.

C Tpt.

Org.

Measures 23-25. The C Tpt. part has a melodic line with sixteenth-note runs. The Organ part concludes with its intricate sixteenth-note and eighth-note accompaniment.

ARIA in G MAJOR - HWV 113 - Händel - Organ

C Tpt.   
Org. 

C Tpt.   
Org. 

C Tpt.   
Org. 

C Tpt.   
Org. 