

Johan Joachim Agrell (1701-1765)

Sinfonia Es-Dur für Streicher und Basso continuo

Basso continuo

Papier.Klänge

Musikalische Kostbarkeiten aus westfälischen Sammlungen

Sinfonia Es-Dur für Streicher und Basso continuo

Basso continuo

Johan Joachim Agrell (1701–1765)

Adagio

Measures 1-3: Bass clef, key signature of one flat (Bb), common time (C).
 Measure 1: 6/4, 5/3
 Measure 2: 7, 6, 6
 Measure 3: 7, 7

Measures 4-6: Bass clef, key signature of one flat (Bb), common time (C).
 Measure 4: 7, 6/4
 Measure 5: 6, 9/4, 8/3
 Measure 6: 5, 7

Measures 7-9: Bass clef, key signature of one flat (Bb), common time (C).
 Measure 7: 7, 6/4
 Measure 8: 6, 9/4, 8/3
 Measure 9: 5, 7

Measures 10-13: Bass clef, key signature of one flat (Bb), common time (C).
 Measure 10: 6/4, 5/3, 6/4, 5/3
 Measure 11: 7, 7
 Measure 12: Presto, 6/4, 6/4, 5/3
 Measure 13: 6

Measures 14-19: Bass clef, key signature of one flat (Bb), common time (C).
 Measure 14: 6
 Measure 15: 6
 Measure 16: 6
 Measure 17: 6
 Measure 18: 6
 Measure 19: 6

Measures 20-24: Bass clef, key signature of one flat (Bb), common time (C).
 Measure 20: 6
 Measure 21: 6
 Measure 22: 6
 Measure 23: 6
 Measure 24: 6

Measures 25-30: Bass clef, key signature of one flat (Bb), common time (C).
 Measure 25: 6
 Measure 26: 6
 Measure 27: 6
 Measure 28: 6
 Measure 29: 6
 Measure 30: 6

Measures 31-35: Bass clef, key signature of one flat (Bb), common time (C).
 Measure 31: 9/4, 8/3, 6
 Measure 32: 6
 Measure 33: 6
 Measure 34: 6
 Measure 35: 6/4

37

7 6/4 5/3 6

43

6 6/4 6/4 6 7/4/3

49

6/4 7/4/3 6 6 5 4

55

4 6/4 7/4/3 6/4 4 6/4

61

7/4/3 6/4 4 6/5 4

67

tasto— 6 6 6 6

73

tasto— 4

78

4 5 7/4/3 6/4 5/4/3 7/4/3

84

7 6 5 6 4 7 6 5 7 6 5 7 6 5 5 3

90

5 3 6 4 5 3 6 4 5 3 5 3 6 4 5 3 5 3 6 4

96

5 3 5 3

102

7 3 7 7 7 7 5 3 7 3 5 3 5 3

108

7 3 5 3 5 3

114

5 3 *tasto* 4 3 7 6 4

120

4 3 7 6 4

126

6 4 5 3 6 4 5 3 6 4

132

5
6
6 5
6 6 6

138

6 6 6 6 6 6

tasto

144

tasto

150

6 6 5 7
5 2

155

6 6 5 7
5 2 6 5

160

6 5
6 5 6 5

166

6 5 6 5 7

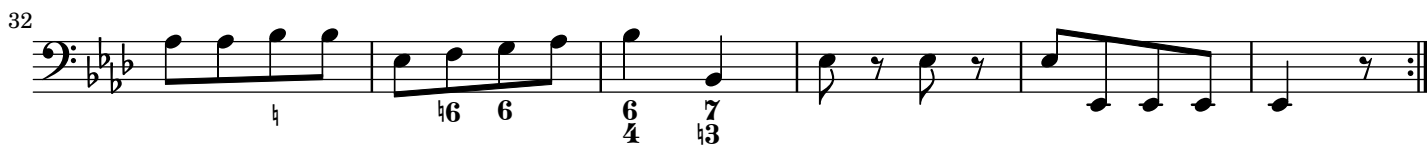
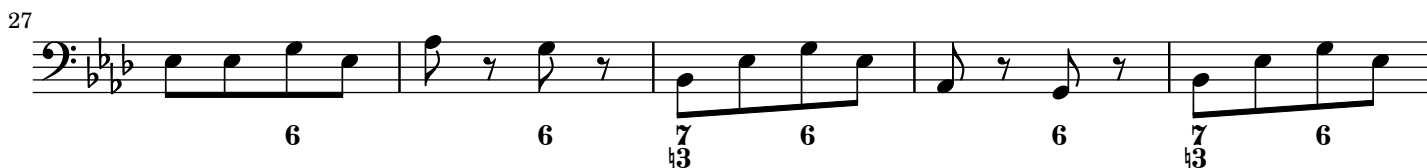
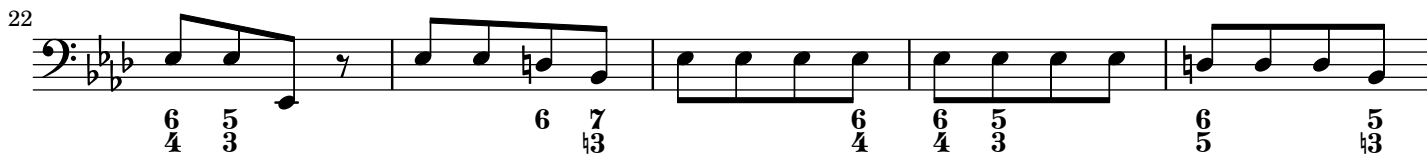
tasto

172

7

tasto

Andante



43

4
4
5 4
6
6/4 5/3
7/3

48

6 6/3
5/3
6/4 5/3
7/3
7
7

53

7/5
7/5/3
7/3
5/3 6/3
5/3 6/3
6/4 5/3

58

5/3
6/3 7/5/3
6/4 5/3
tasto— 9/3

63

7/3
7
6
6/4 5/3

69

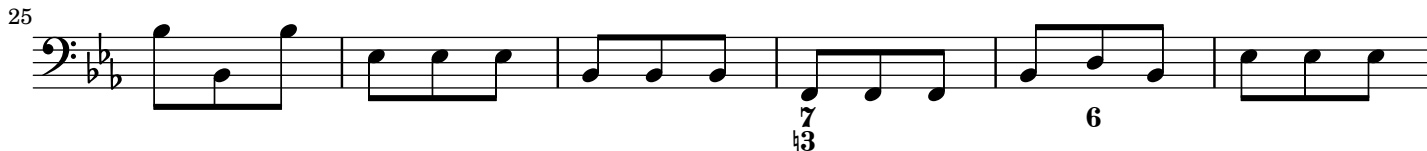
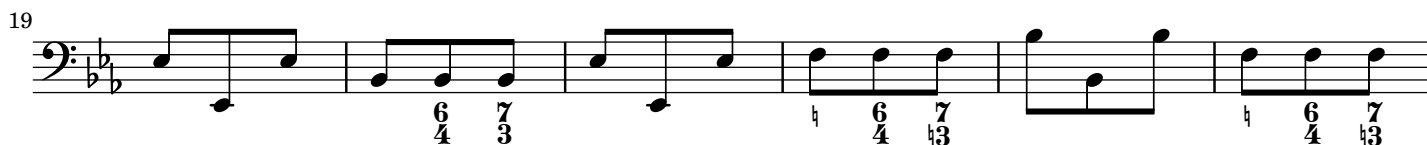
6
7
6

75

6 7 6
7
6/4 7
6/4

81

5/3
6/5 7
6 6/4 5/3

Presto

49

6 6 7 6 6 6 7 6 4

55

6 4 7 5 6 4 7 7 7

61

6 7 6 5 6 7 6 4 5 6

tasto

67

73

6 7 6 7 6 7 6 7

79

6 4 7 6 4 5 6

85

7 6 6 6

90

6 6 4 5 6