

Violine 1

Vaclav Pichl

Quintett op.5 Nr.3

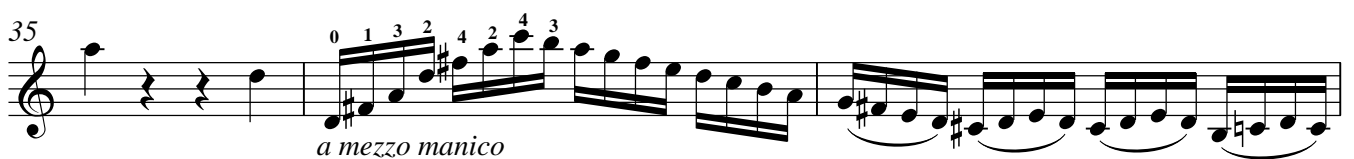
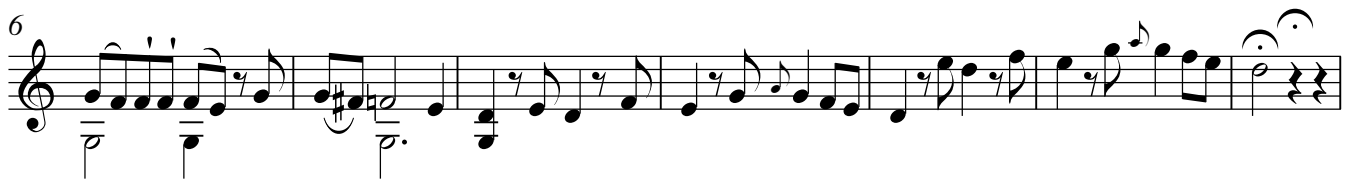
Quintett op.5 Nr.3 C-Dur für Oboe, 2 Violinen, Viola und Violoncello

Violine 1

Eingerichtet nach dem Divertimento op.5 Nr.3 für Flöte oder Oboe und Streichquartett
von Notenschreiber @ IMSLP

Vaclav Pichl

Allegro moderato

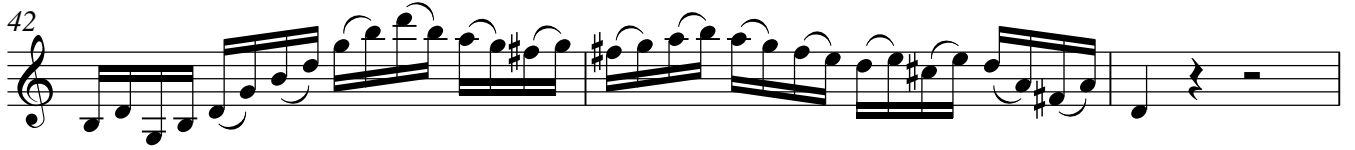


Violine 1

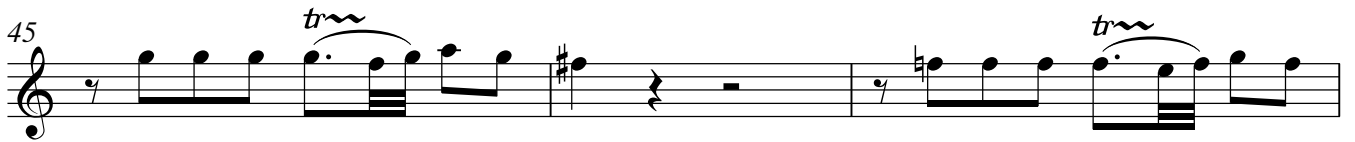
40



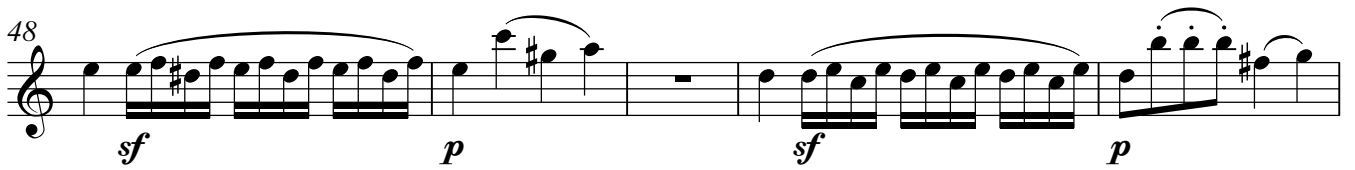
42



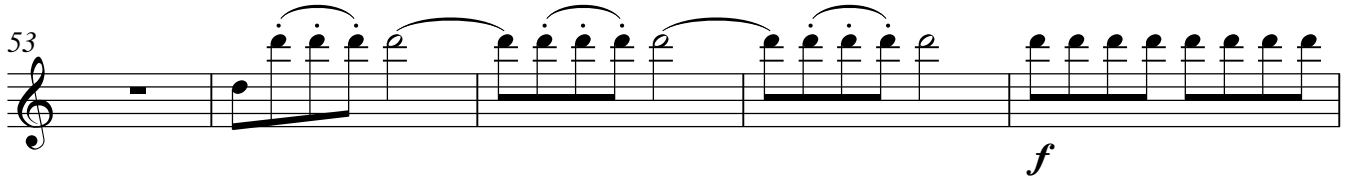
45



48



53



58



65



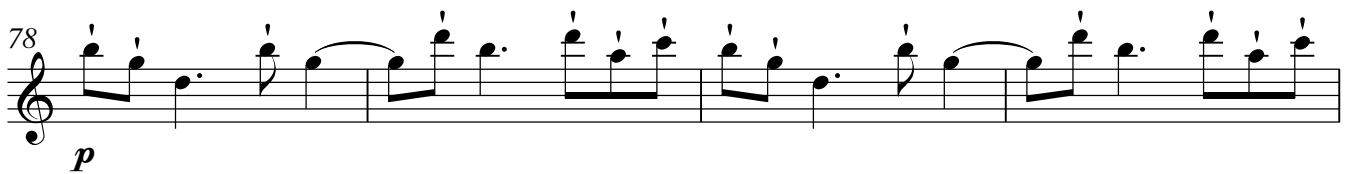
71



74



78

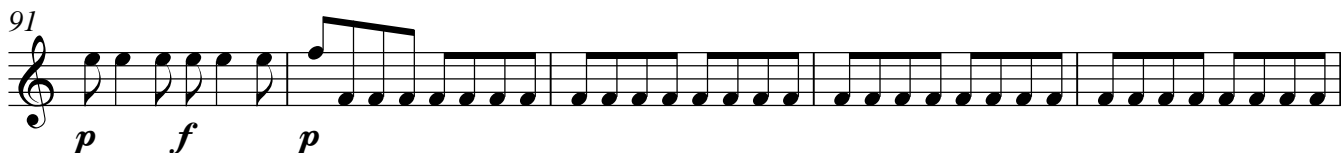


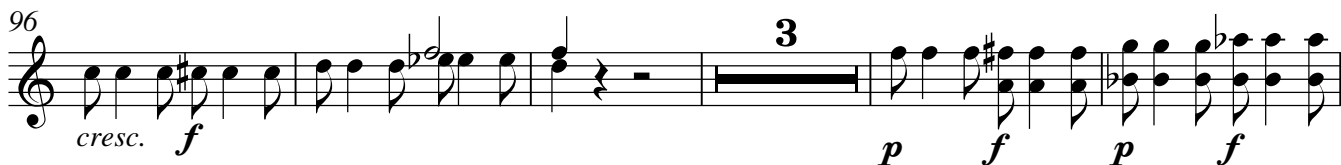
82

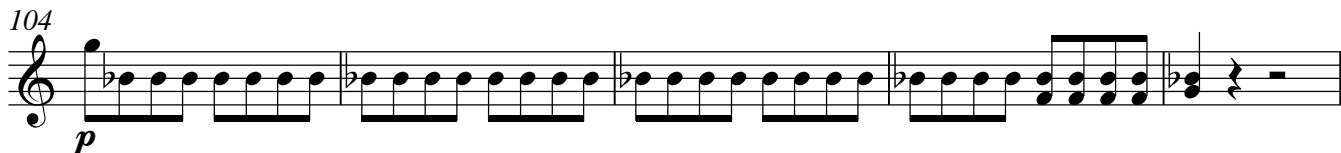


Violine 1

86 

91 

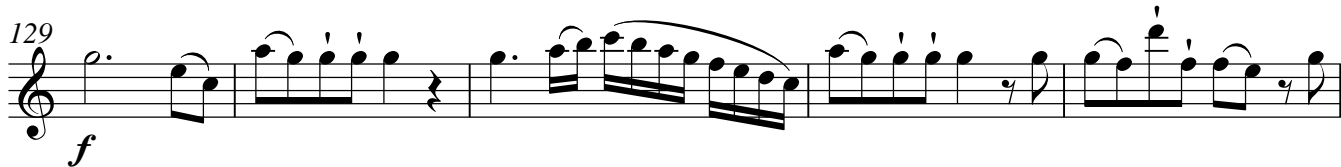
96 

104 

109 

118 

122 

129 

134 

141 

Violine 1

145 *p* *f* 2

152

159 *tr*

164 *tr*

168

175 *f* *p* *f* *tr*

180 *p*

186 *f* *tr*

190 *p* *f*

6

Rondo moderato

Violine 1

Sotto voce

5

10

p *cresc.* *f*

17

fp *fp*

23

3 3 3

27

p *f* *p* *f* *p*

3

35

tr tr *f* *p*

42

3 3 3 3

tr

47

tr *p*

Violine 1

52 **Alternativo I**

12

64

80

2.

Sotto voce

5

91

p *cresc.* *f*

98

fp *fp*

104

3 3 3

108 **Alternativo II**

116

126

Sotto voce

132

5

p *cresc.*

144

f *fp* *fp*

152

3 3 3

Violine 1

Alternativo III

156

163 *tr* *tr*

168

171

175 *tr* *tr*

180 *tr*

190 *p*

195 *tr*

200

205 Sotto voce

219 *p* *cresc.*

227 *f* *fp* *fp*

233 *p* *f* *p* *f*

244

250 *tr* *tr* *p*

Detailed description: This page of a musical score for Violin 1, titled 'Alternativo III', contains measures 156 through 250. The music is written in a single staff with a treble clef and a key signature of two flats (B-flat and E-flat). The time signature is 7/8. The score features a variety of musical textures and dynamics. It begins with a series of eighth-note patterns in measures 156-162. Measures 163-174 are characterized by trills and sixteenth-note runs. Measures 175-189 consist of dense sixteenth-note passages, with trills appearing in measures 175 and 189. Measure 190 starts with a piano (*p*) dynamic and continues with sixteenth-note patterns. Measures 195-204 feature a complex texture with many triplets and trills. Measure 205 is marked 'Sotto voce' and contains a five-measure rest. Measures 206-218 show a gradual increase in dynamics, starting with piano (*p*) and moving towards fortissimo (*f*). Measures 219-226 are marked fortissimo (*f*) and feature sixteenth-note patterns with accents. Measures 227-232 continue with sixteenth-note patterns, including fortissimo piano (*fp*) markings. Measures 233-243 show a dynamic range from piano (*p*) to fortissimo (*f*) with various articulations. Measures 244-249 feature sixteenth-note patterns with trills and triplets. The piece concludes in measure 250 with a trill and a piano (*p*) dynamic.