

16)

Fräulein Marie Wassiliowna Ritter  
*verehrungsvoll und freundschaftlichst gewidmet.*

# Primula veris.

Zwei Gedichte

von  
**N. LENAU**

für eine Singstimme mit Klavierbegleitung

componirt  
von

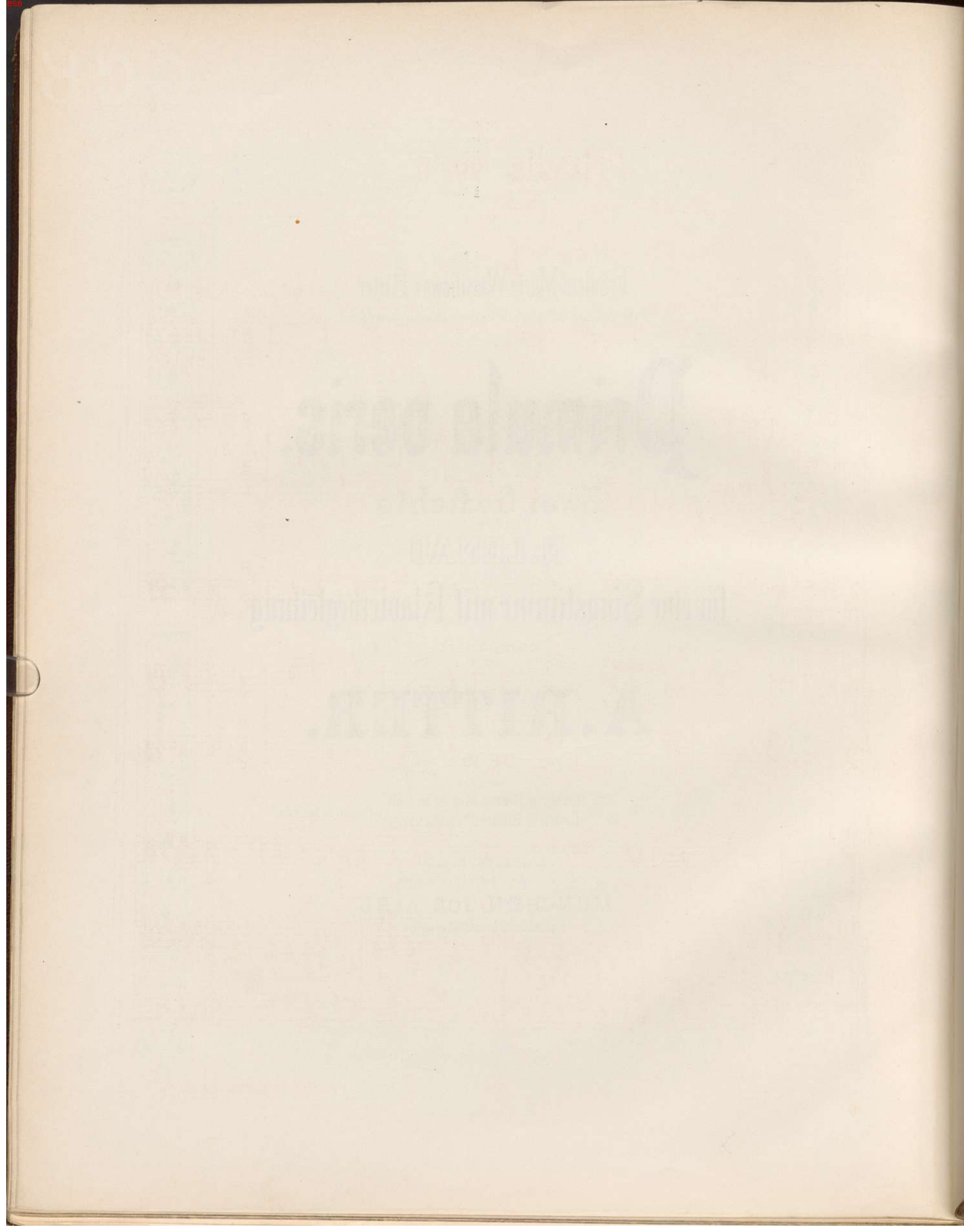
## A. RITTER.

OP. 19.

Verl. N<sup>o</sup> 2733. N<sup>o</sup> 1. „Liebliche Blume, bist du so früh“  
N<sup>o</sup> 2. „Liebliche Blume, Primula veris!“ Compl. Pr. Mk. 1.60.

*Eigenthum des Verlegers.  
Eingetragen in das Vereinsarchiv.*

MÜNCHEN, JOS. AIBL,  
Kgl. bayr. Hofmusikalienverlag.





Lei - - ser denn al - - le Blu - men der

Wie - se hast du ge - schlummert, lieb - li - che Blu - me,

*dim.* *più p* *dolce*

Pri - - mu - la ve - - - ris! Dir

*p cresc.* *f*

nur ver - nehm - bar lock - te das er - - ste sanf - te Ge - flü - ster

*p* *cresc.*

*più cresc.* - - *f*

we - cken - den Früh - lings, Pri - mu - la

*più cresc.* - - *f* *dim.*

*ped.* \* *ped.* \*

ve - - - ris! *lange* *sotto voce* Mir auch im

*pp* *pp*

*ped.*

Her - zen blüh - te vor Zei - ten, schö - ner denn al - le Blu -

- - men der Lie - be, *p* Pri - mu - la ve - - - ris!

*pp* *pp* *p.*

*arbores*

# Primula veris.

(Lenau.)

## II.

A. Ritter, Op. 19. N<sup>o</sup> 2.

Singstimme. *pp*

Lieb - li - che Blu - me, Pri - mu - la ve - ris!

Pianoforte. *pp*

*ped.* \* *ped.* \* *ped.* \* *ped.* \*

*f* *cresc.* *più f*

Hol - de, Dich nenn' ich Blu - me des Glau - bens.

*f* *cresc.* *più f* *dim.*

*ped.* \* *ped.* \* *ped.* \* *ped.* \*

*p*

Gläu - big dem er - sten Win - ke des Him - mels eilst du ent - ge - gen,

*p*

öff - nest die Brust ihm. Früh - ling ist

kom - - men! Mö - gen ihn Frö - - ste und trü - ben - de

Ne - bel wieder ver - hül - len; Blu - me du glaubst es,

*molto dim.* *p*

Blu - me du glaubst dass der er - sehn - te göttli - che Früh - ling end - lich ge -

*cresc.* *più cresc.*

*f*  
- kom - - men, öff - - nest die Brust ihm.

The first system features a vocal line in treble clef with a key signature of three sharps (F#, C#, G#) and a 3/4 time signature. The lyrics are "- kom - - men, öff - - nest die Brust ihm." The piano accompaniment consists of two staves: the right hand plays chords in treble clef, and the left hand plays chords in bass clef. The dynamic marking *f* is present at the beginning. There are two asterisks (\*) below the piano part, one in the first and third measures.

*più f*  
A - ber es drin - - - gen lau - - -

The second system continues the vocal line with the lyrics "A - ber es drin - - - gen lau - - -". The piano accompaniment features a change in time signature to 2/4. The dynamic marking *più f* is used. The piano part includes several triplet markings (3) and two asterisks (\*) below the staff.

*dim.*  
ern - - de Frö - - - ste tödt - - lich in's

The third system has the lyrics "ern - - de Frö - - - ste tödt - - lich in's". The piano accompaniment changes to a 3/4 time signature. The dynamic marking *dim.* is present. The piano part includes triplet markings (3) and two asterisks (\*) below the staff.

*p* **Più lento.**  
Herz dir.

The fourth system begins with the lyrics "Herz dir." and the tempo marking **Più lento.** The piano accompaniment is in 3/4 time. The dynamic marking *p* is used. The piano part includes a fermata over the first measure and a 7-measure rest in the second measure.



*p*  
Mag - es ver -

wel - ken! Ging doch der Blu - - - me

*cresc.*

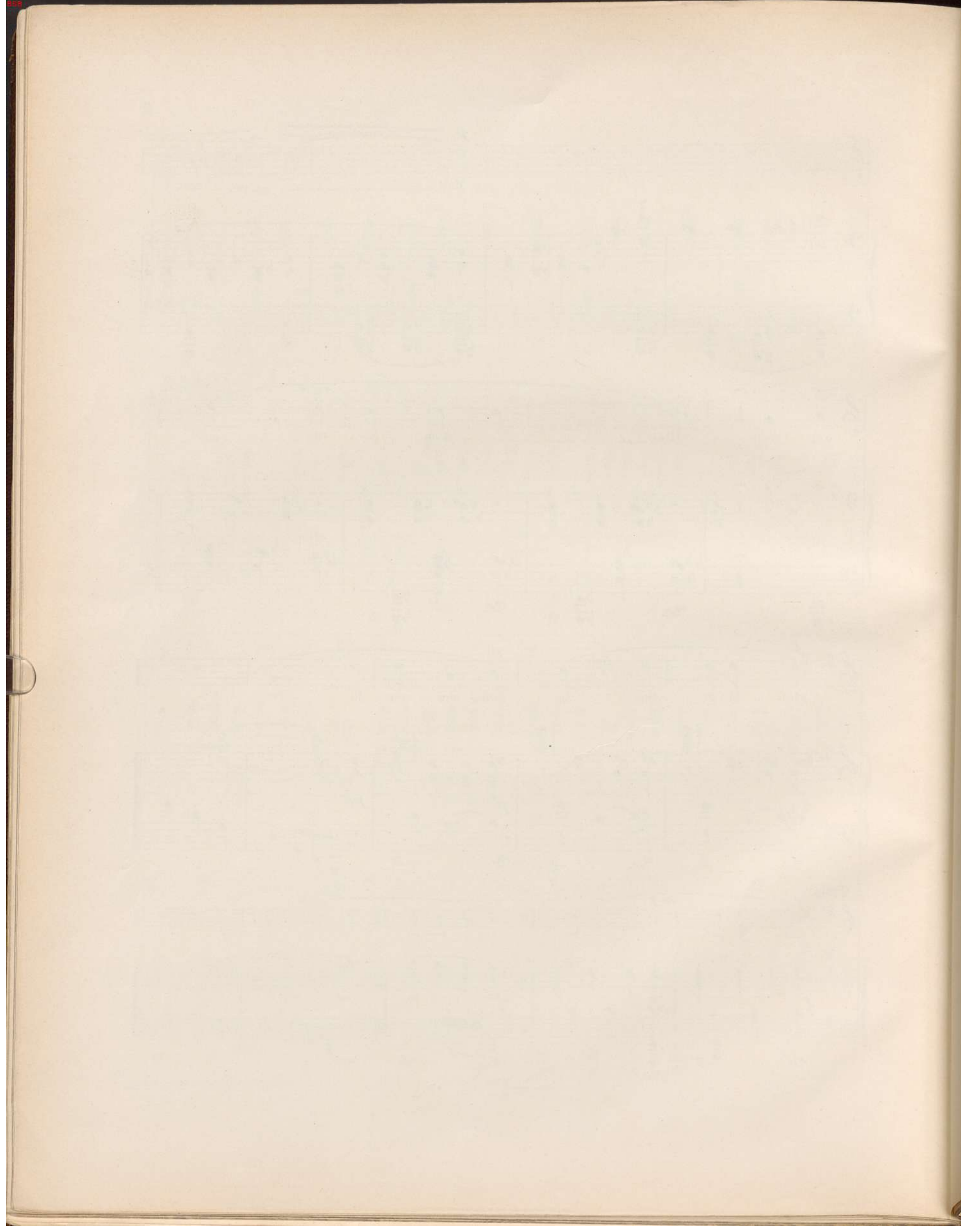
gläu - bi - ge See - - le nim - mer ver - lo - - ren.

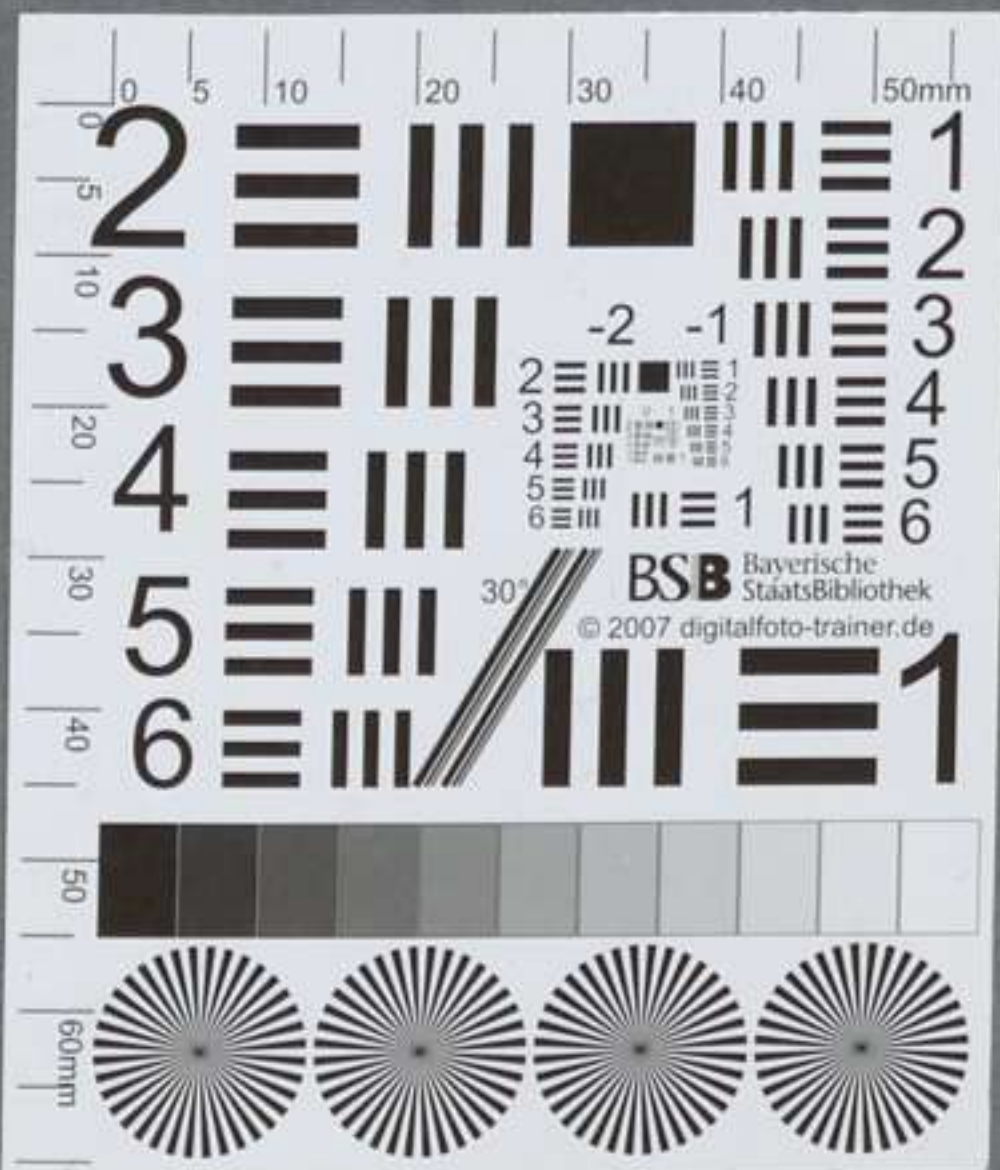
*dim.* *p*

Ossia.  
gläu - - bi - ge See - - - le nim - mer ver - - lo - - - ren.

*f* *p* *pp subito*

„See - - lig im Glau - ben!“





Ritter, Alexander

Primula veris zwei Gedichte von N. Lenau ; für eine Singstimme mit  
Klavierbegleitung ; op. 19

München

4 Mus.pr. 23859#Beibd.16

urn:nbn:de:bvb:12-bsb00035564-3