

# Dear what can the matter be?

Arranged as a

R O N D O,

for the

Piano Forte.

BY

J. L. Dussek.

Ent. Sta. Hall.

Price 2<sup>s</sup>.

London, Printed by the Regent's Harmonic Institution.

(Lower Saloon, Argyl Rooms.)

Allegretto  
Assai



This page of musical notation consists of seven systems, each with a grand staff (treble and bass clefs). The music is written in a key signature of one flat (B-flat) and a 3/4 time signature. The notation includes various musical symbols such as notes, rests, and dynamic markings. The dynamics used are *f* (forte), *p* (piano), *ff* (fortissimo), *pp* (pianissimo), and *Ped:* (pedal). There are also asterisks (\*) marking specific measures. The page is numbered '2' in the top left corner and '231' at the bottom center.

System 1: *f* in the right hand, *p* in the left hand. Pedal markings in the left hand.

System 2: *f* in the right hand, *ff* in the left hand. Pedal markings in the left hand.

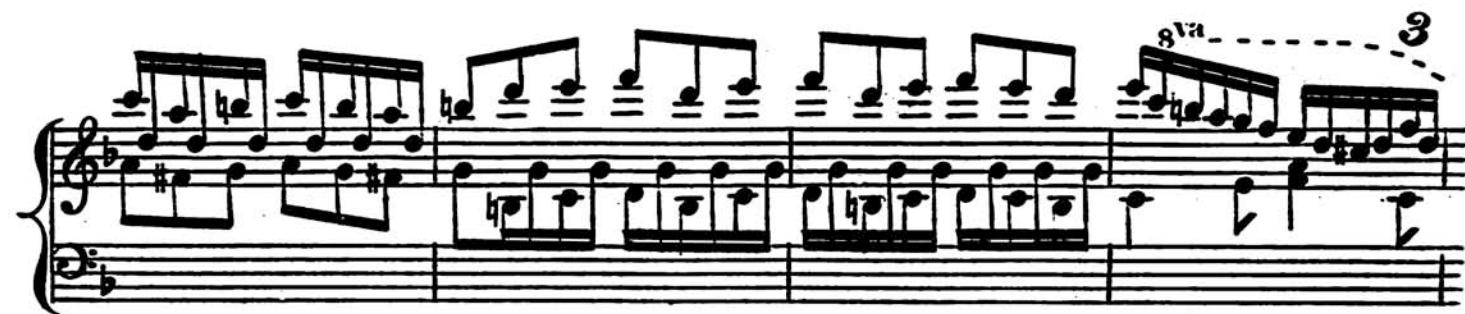
System 3: *pp* in the right hand, *ff* in the left hand. Pedal markings in the left hand.

System 4: *ff* in the right hand, *pp* in the left hand. Pedal markings in the left hand.

System 5: *pp* in the right hand, *ff* in the left hand. Pedal markings in the left hand.

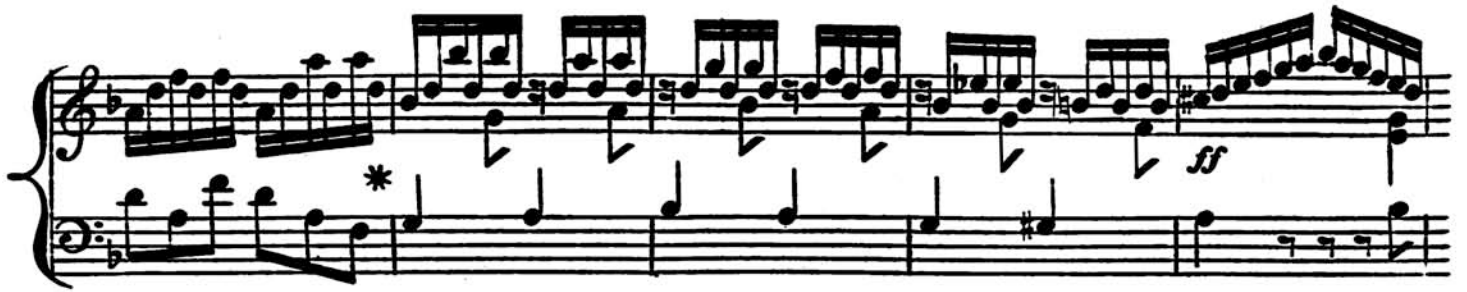
System 6: *pp* in the right hand, *ff* in the left hand. Pedal markings in the left hand.

System 7: *pp* in the right hand, *ff* in the left hand. Pedal markings in the left hand.









This page of musical notation consists of seven systems of grand staves (treble and bass clef). The notation is complex, featuring many sixteenth and thirty-second notes, often beamed together. Dynamic markings include *pp* (pianissimo), *ff* (fortissimo), *p* (piano), and *ppp* (pianissimissimo). Pedal markings are indicated by "Ped:" followed by an asterisk (\*). A "loco" marking is present in the fifth system. The page is numbered 6 at the top left and 231 at the bottom center. The notation is in a key signature of one flat (B-flat).

231