

Nun lob mein Seel' den Herren  
BuxWV 212

The musical score for "Nun lob mein Seel' den Herren" (BuxWV 212) by Arndt Buxtehude is presented in six systems. The key signature is one flat (B-flat major or D minor), and the time signature is 3/4. The right hand (RH) and left hand (LH) are indicated by 'R' and 'L' respectively. The score includes various musical notations such as chords, single notes, and eighth-note patterns. Pedal points are marked with 'R' and '0'.

System 1: RH starts with a chord (B-flat, D, F), LH starts with a continuous eighth-note pattern. Pedal point 'R' is marked in the LH.

System 2: RH continues with chords, LH continues with eighth notes. Pedal point '0' is marked in the LH.

System 3: RH continues with chords, LH continues with eighth notes. Pedal point 'R' is marked in the LH.

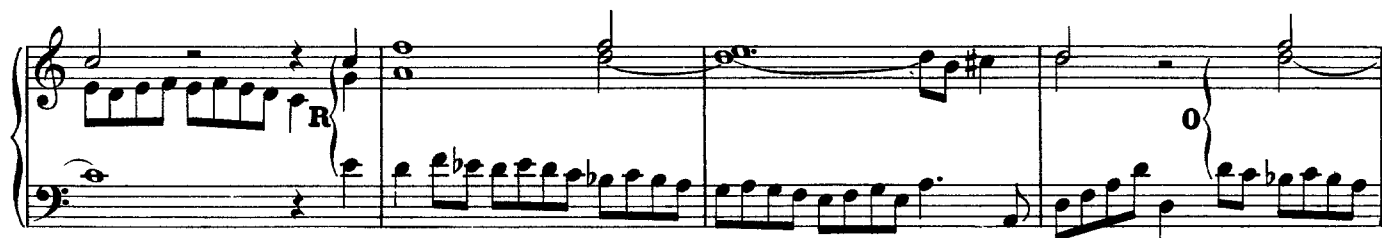
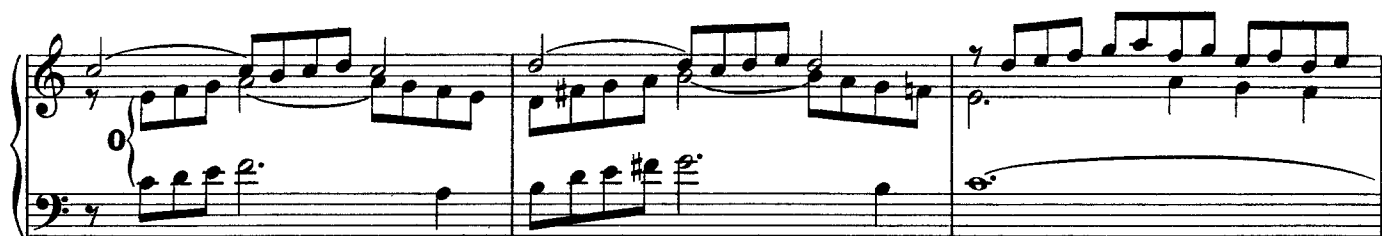
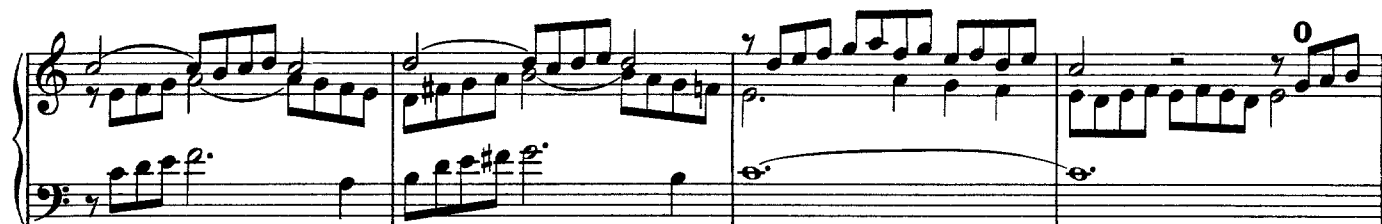
System 4: RH continues with chords, LH continues with eighth notes. Pedal point '0' is marked in the LH.

System 5: RH continues with chords, LH continues with eighth notes. Pedal point 'R' is marked in the LH.

System 6: RH continues with chords, LH continues with eighth notes. Pedal point '0' is marked in the LH.

The score concludes with a final chord in the RH and a final eighth-note pattern in the LH. A pedal point 'Ped.' is marked at the end of the LH.

The image displays a page of musical notation for Buxtehude Organ Works, consisting of six systems of two staves each. The notation is written in a standard musical format with treble and bass clefs. The first system shows a melodic line in the treble staff and a supporting line in the bass staff, with a '0' marking above the treble staff. The second system continues the melodic line with a '0' marking. The third system features a more complex melodic line with a 'R' marking. The fourth system includes a melodic line with a '0' marking and a 'R' marking, ending with the instruction '(Man.)'. The fifth system shows a melodic line with a '0' marking and a 'R' marking. The sixth system concludes the piece with a melodic line and a 'R' marking.



The image displays six systems of musical notation for an organ work by Buxtehude. Each system consists of two staves, a treble and a bass staff, connected by a brace. The notation includes various musical symbols such as notes, rests, and dynamic markings. Performance instructions are provided in parentheses below the staves: (Ped.) for pedal and (Man.) for manual. The notation is in a historical style, with some notes beamed together and specific fingerings indicated. The key signature is one sharp (F#), and the time signature is common time (C). The piece concludes with a double bar line at the end of the sixth system.

System 1: Treble staff has a rest followed by a series of eighth notes. Bass staff has a series of eighth notes. Markings: *R* above the treble staff, *R* below the bass staff.

System 2: Treble staff has a series of eighth notes. Bass staff has a series of eighth notes. Markings: *0* above the treble staff, *0* below the bass staff, *R* above the treble staff.

System 3: Treble staff has a series of eighth notes. Bass staff has a series of eighth notes. Markings: *0* above the treble staff, *0* below the bass staff.

System 4: Treble staff has a series of eighth notes. Bass staff has a series of eighth notes. Markings: *R* above the treble staff, *0* below the bass staff.

System 5: Treble staff has a series of eighth notes. Bass staff has a series of eighth notes. Markings: *R* above the treble staff, *0* below the bass staff, (Ped.) below the bass staff, (Man.) below the bass staff, (Ped.) below the bass staff.

System 6: Treble staff has a series of eighth notes. Bass staff has a series of eighth notes. Markings: *0* above the treble staff, (Man.) below the bass staff.