

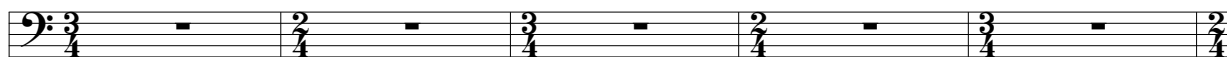
Fagotto

# Al crepuscolo

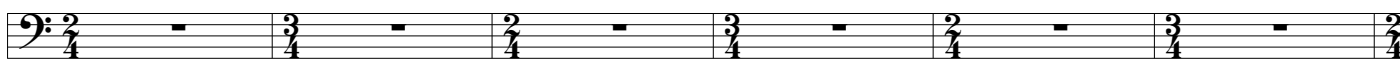
per Fagotto e Quartetto d'archi

Alessandro Kirschner  
(1998)

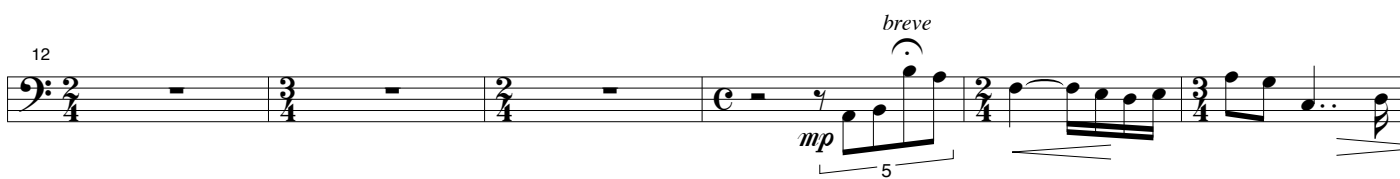
1 Intenso  $\text{♩} = 72$



6



12



18



24



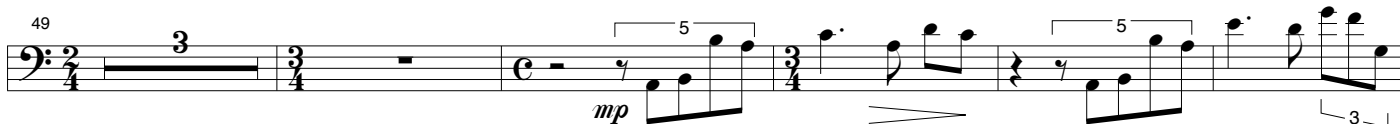
31



36



49



57 *a cadenza*  
*p* *mp* *mf*  
3 5 3

62 *gradatam.* **Mosso** ♩ = 126  
*p* *f*  
tr

68 *f*  
2

75 *mf* *f*

**Poco meno** ♩ = 108  
82 *sfz p* *mf* *p*  
3

88 *f* *p*  
4

97 *rall* **Mosso**  
*f*  
3

104 *mp* *p* *mf* *cresc.*  
3

110 *mp* *mf* *f* *mp*  
2

117 *espressivo*  
*p*  
3

124

*p* *mf*

133

*f* *mp*

138

*mf* *f*

143

*rall. molto* ----- **Intenso**

*mf espressivo*

149

*p* *mp*

155

*p*

161

*pp* *mp* *p*

168

*poco* *pp*

175

*come glissando*

*ppp*