

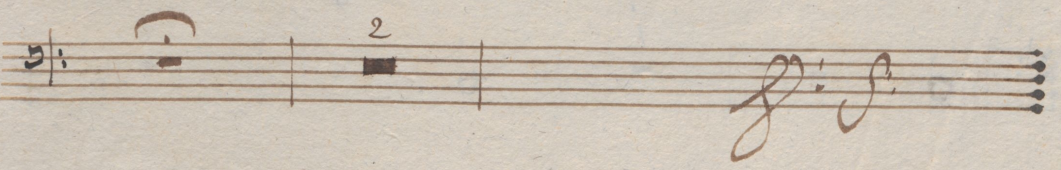
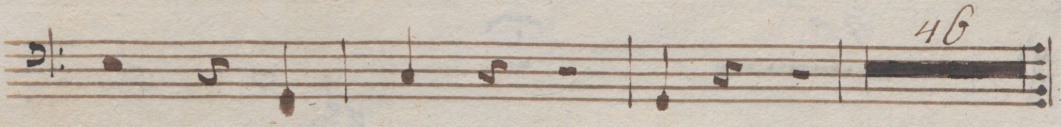
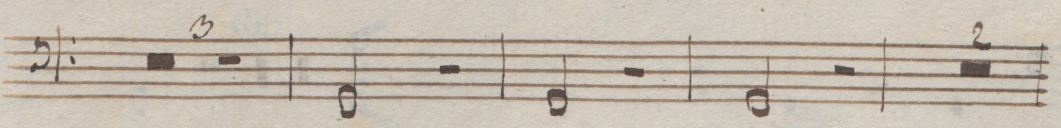
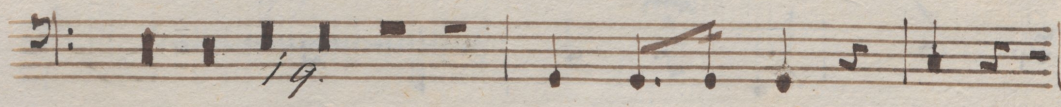
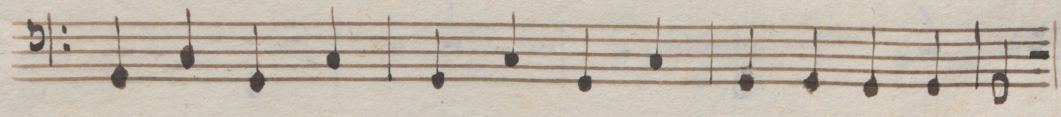
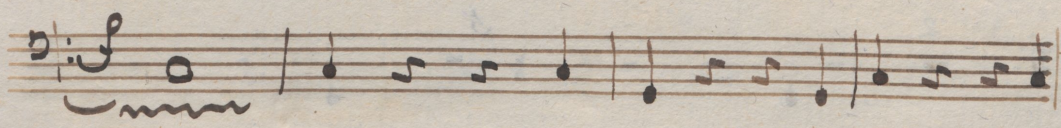
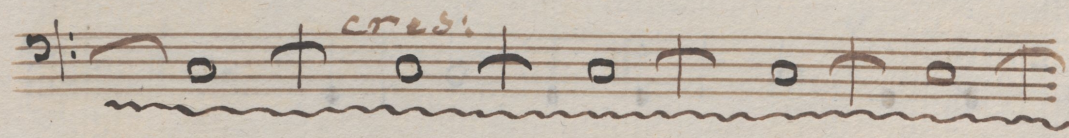
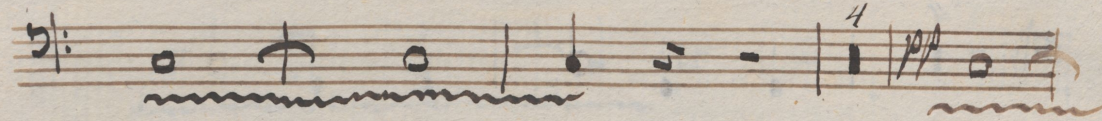
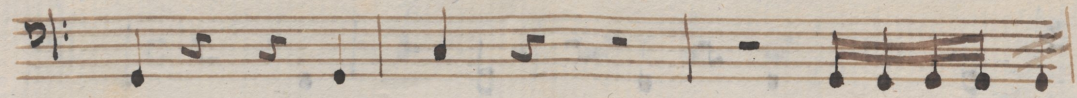
*Timpani*

*Sinfonia.*

*In. D*

*Maestoso*

*Allegro con spirito*



A handwritten musical score on ten staves. The notation includes various note values, rests, and bar lines. Annotations include the number '4' above the third staff, '2' above the fifth staff, '5' above the sixth staff, '10' above the eighth staff, and '90.' above the ninth staff. A wavy line is drawn under the second staff. The paper is aged and has a torn left edge.

Handwritten musical notation on a five-line staff, featuring a treble clef, a key signature of one flat, and a common time signature. The notation includes a whole note, a quarter rest, a quarter note with a '4' above it, and a series of eighth notes. A wavy line is drawn below the staff at the end.

Handwritten musical notation on a five-line staff, featuring a treble clef, a key signature of one flat, and a common time signature. The notation includes a whole note, a half note with a slur, a whole note with a slur, and a quarter note. A wavy line is drawn below the staff.

Handwritten musical notation on a five-line staff, featuring a treble clef, a key signature of one flat, and a common time signature. The notation includes a whole note, a half note with a slur, a whole note with a slur, and a quarter note. A wavy line is drawn below the staff.

Handwritten musical notation on a five-line staff, featuring a treble clef, a key signature of one flat, and a common time signature. The notation includes a quarter note, a quarter rest, a quarter note with a '5' above it, a quarter rest, a quarter note, and a quarter rest. A '4.' is written above the final measure.

Handwritten musical notation on a five-line staff, featuring a treble clef, a key signature of one flat, and a common time signature. The notation includes a whole note, a quarter rest, a whole note, a quarter rest, a whole note, and a quarter rest. A '2' is written above the final measure.

Handwritten musical notation on a five-line staff, featuring a treble clef, a key signature of one flat, and a common time signature. The notation includes a quarter note, an eighth note, a quarter note, an eighth note, a quarter rest, a dotted quarter note, an eighth note, a quarter note, and a quarter note.

Handwritten musical notation on a five-line staff, featuring a treble clef, a key signature of one flat, and a common time signature. The notation includes a whole rest with '47.' written above it, followed by a half note with a slur.

Empty five-line musical staff.

*f: p.*

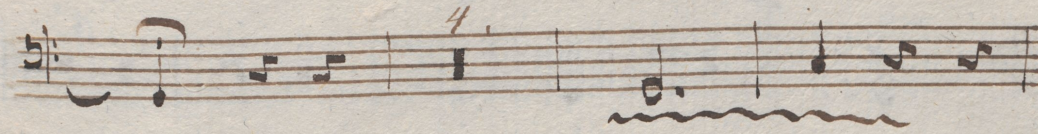
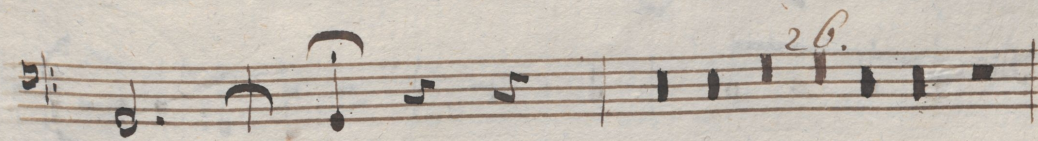
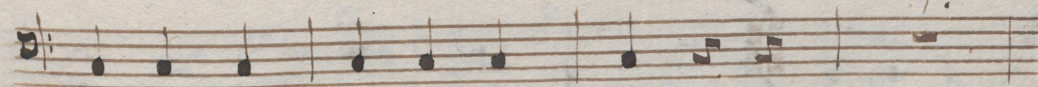
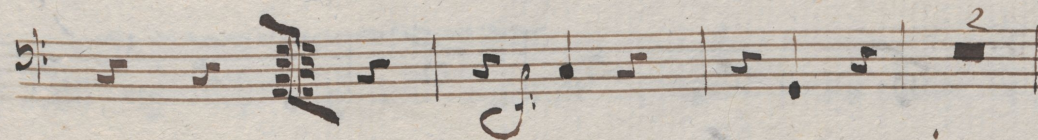
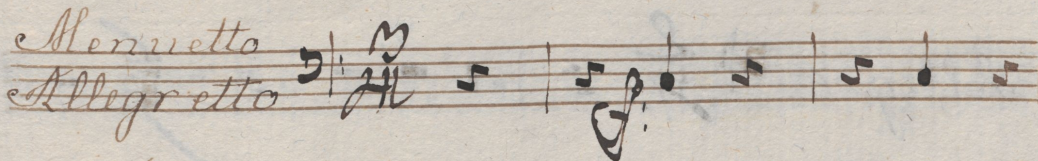
Empty five-line musical staff.

Empty five-line musical staff.

A handwritten musical score on ten staves. The notation includes various note values, rests, and dynamic markings. The first staff has a '3' above it. The second and third staves have wavy lines below them. The fourth and fifth staves have 'ff' markings. The sixth staff has a '3' above it. The seventh staff has a wavy line below it. The eighth and ninth staves have simple note values. The tenth staff ends with a double bar line and a fermata.

*Adagio tacet.*

*Minnetto*  
*Allegretto*

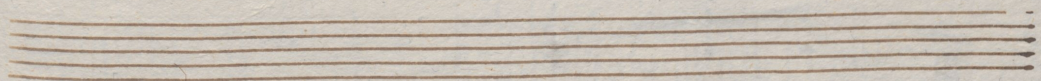
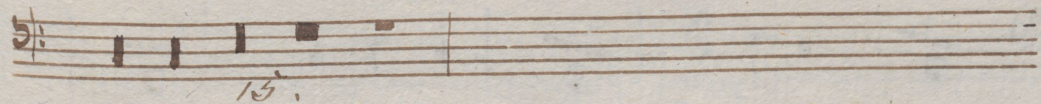
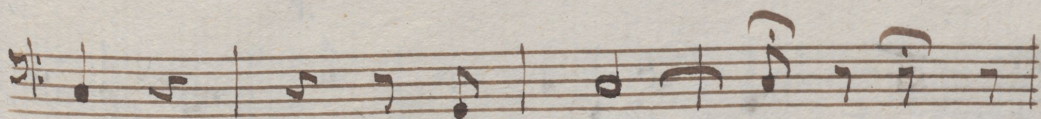
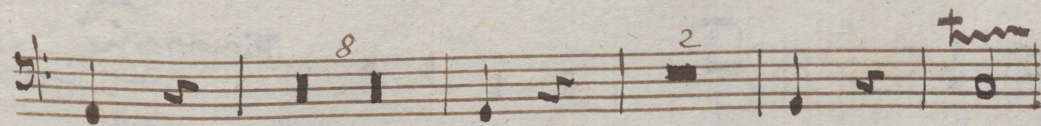
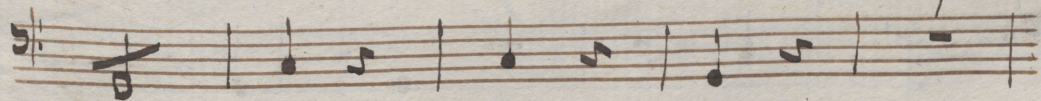
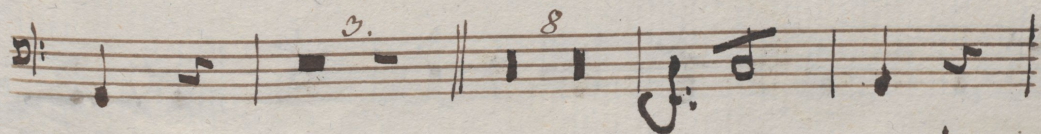
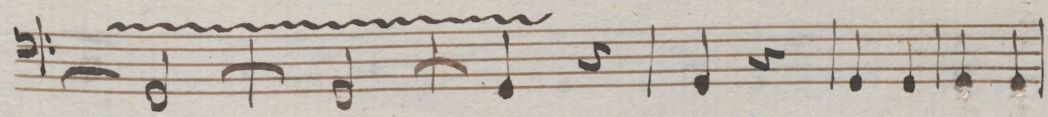
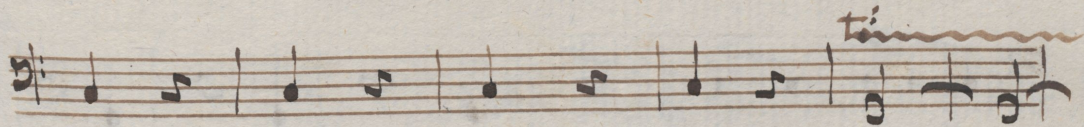
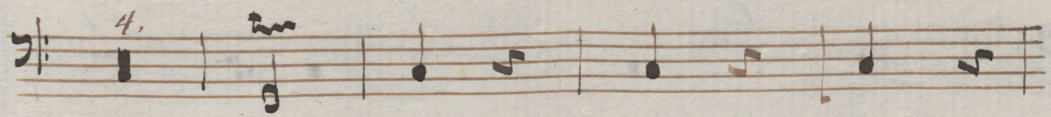


*Trio tacet.*

*Minnetto Da Capo.*

Rondo.

Allegro.  $\frac{2}{4}$





A page of handwritten musical notation on ten staves. The notation is in brown ink on aged, slightly yellowed paper. The first staff begins with a treble clef and a key signature of one flat (B-flat). The music consists of various note values, including quarter, eighth, and sixteenth notes, as well as rests. Some notes have accents or slurs above them. The second staff starts with a bass clef. The third staff begins with a C-clef (soprano or alto). The fourth staff starts with a C-clef (soprano or alto). The fifth staff begins with a C-clef (soprano or alto). The sixth staff starts with a C-clef (soprano or alto). The seventh staff begins with a C-clef (soprano or alto) and features a large, decorative flourish that resembles a stylized 't' or 'm' with a wavy tail. The eighth staff starts with a C-clef (soprano or alto). The ninth staff begins with a C-clef (soprano or alto). The tenth staff starts with a C-clef (soprano or alto). The paper shows signs of wear, including a small tear on the left edge and some foxing.

A page of handwritten musical notation on aged, yellowed paper. The page contains ten staves of music, each beginning with a treble clef and a key signature of one sharp (F#). The notation includes various note values, rests, and dynamic markings such as accents. The first staff features a complex rhythmic pattern with beamed notes. The second through seventh staves show a melodic line with frequent accents and some rests. The eighth staff continues the melodic line with a final cadence. The ninth and tenth staves are empty, showing only the five-line staff structure.