

# Miserere

J.A. Kobrich

*Tarde*

Violino 1

Measures 1-5. Dynamics: *p*, *f*.

Measures 6-9. Dynamics: *p*.

Measures 10-15. Dynamics: *p*, 2, *p*.

Measures 16-20. Dynamics: *f*.

Measures 21-26. Dynamics: *f*. Tempo change: *Adagio*.

Measures 27-31. Dynamics: *f*.

Measures 32-38. Dynamics: *p*. Trill: *tr*.

Measures 39-44. Dynamics: *p*.

Measures 45-50. Dynamics: *p*.

Measures 51-58. Dynamics: *p*.

Measures 59-64. Dynamics: *p*. Final measure: 2.



155



161



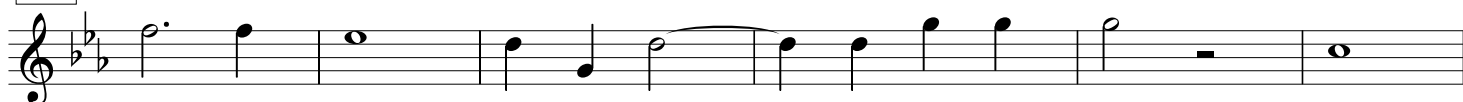
167



173



179



185



192



199

*Adagio*

202



205

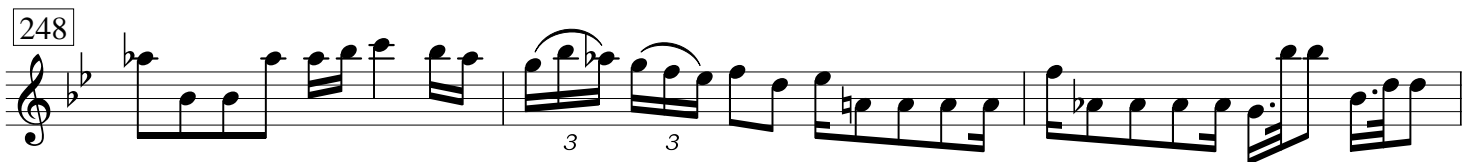
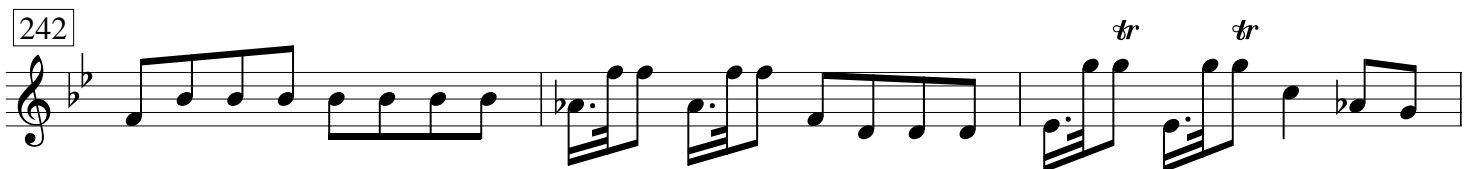
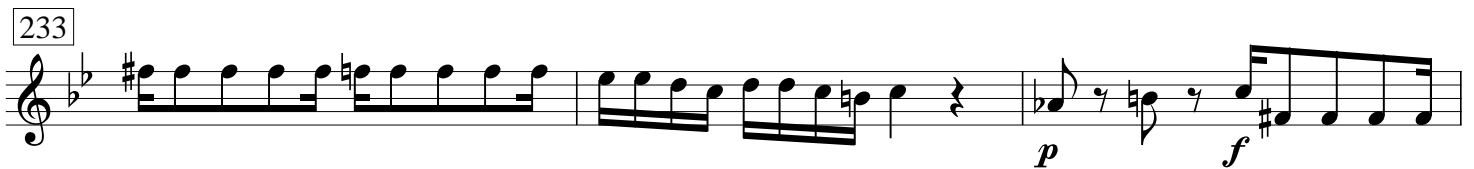
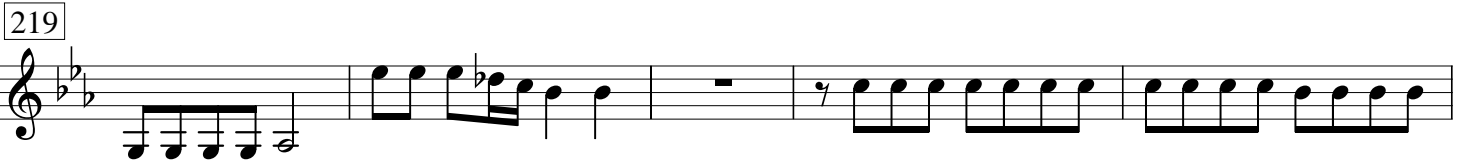


208



211



214 *Adagiosissime*

251

Trills and sixteenth-note runs in a treble clef with a key signature of two flats. A piano (*p*) dynamic marking is present. Trills are marked with *tr*.

254

Trills and sixteenth-note runs in a treble clef with a key signature of two flats. Trills are marked with *tr*.

257

Trills and sixteenth-note runs in a treble clef with a key signature of two flats. Trills are marked with *tr*.

260

Trills and sixteenth-note runs in a treble clef with a key signature of two flats. A forte (*f*) dynamic marking is present. Trills are marked with *tr*.

262

*Adagio*

Tempo change to *Adagio*. Measure 262 features a 7-measure rest. The time signature changes to 3/4. A forte (*f*) dynamic marking is present.

273

Simple quarter-note melody in a treble clef with a key signature of two flats.

278

Simple quarter-note melody in a treble clef with a key signature of two flats.

283

Simple quarter-note melody in a treble clef with a key signature of two flats.

288

Simple quarter-note melody in a treble clef with a key signature of two flats.

291

Simple quarter-note melody in a treble clef with a key signature of two flats, ending with a double bar line.