

1
VIOLA PRIMA.



VIOLETTA

TH
TH
TH
TH

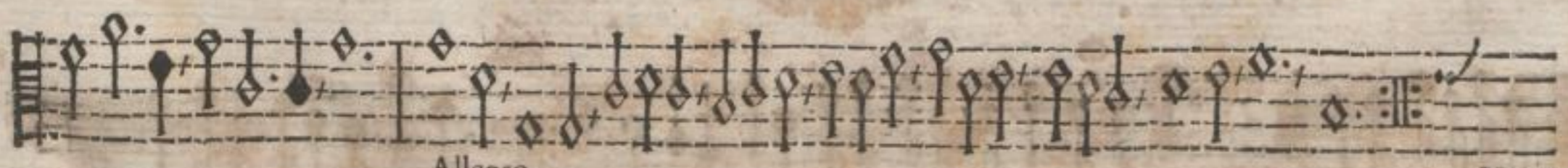
I.



Sonata à 5.



Adagio.



Allegro.

Verte.

Aaa 2

25 (2.) 20

Handwritten musical notation on a five-line staff. It begins with a treble clef and a common time signature (C). The notation consists of a series of notes, many of which are beamed together in groups. There are several dynamic markings, including 'p' (piano) and 'c' (crescendo), and some notes have slurs or accents above them.

Adagio.

Handwritten musical notation on a five-line staff, continuing the piece. It features similar beamed notes and dynamic markings as the first staff.

Handwritten musical notation on a five-line staff, continuing the piece. It features similar beamed notes and dynamic markings as the first staff.

Handwritten musical notation on a five-line staff, continuing the piece. It features similar beamed notes and dynamic markings as the first staff.

Handwritten musical notation on a five-line staff, continuing the piece. It features similar beamed notes and dynamic markings as the first staff.

2.



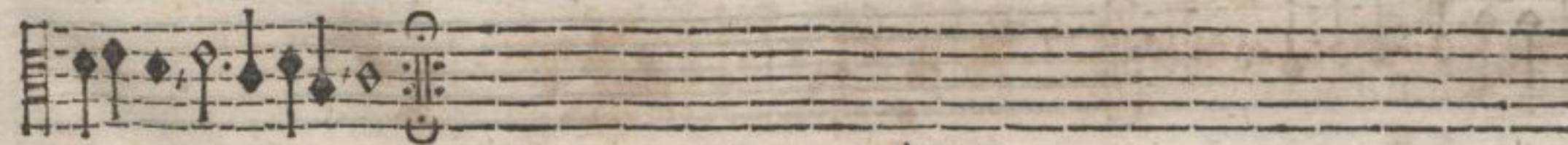
Adagio.
Allemande à 3.



3.



Courente à 3.



Aaa 3



Bal. à 3.



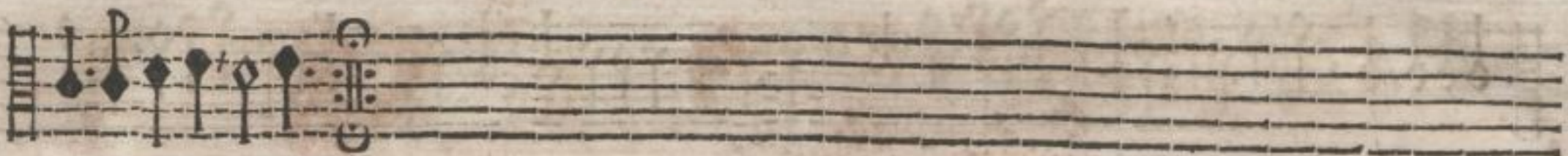
Courente à 3.



6.



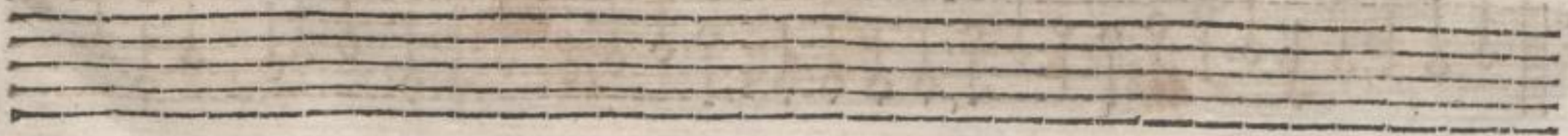
Bourre à 3.



7.



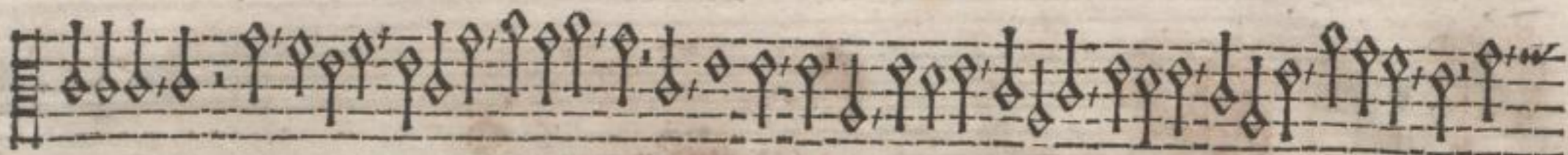
Sarabande à 3.

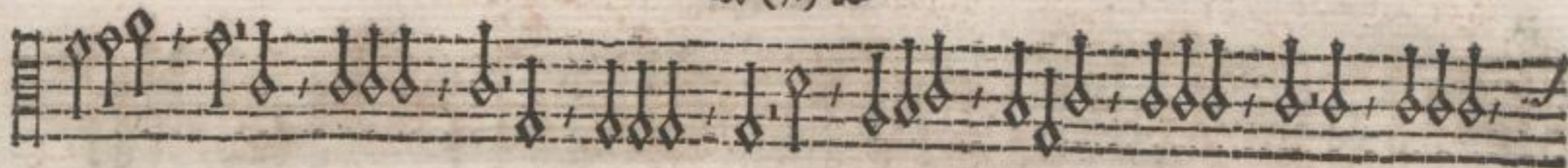


8.



Chique à 5.





Conclusio à 5.



Bbb

10.



Adagio.

Sonata à 5.



Adagio.





Adagio.



Piano.

Bbb 2

11.



Bransle à 4.



12.



Gay à 4.



13.



Amener à 4.



14.



Courente à 4.



Bbb 3

15.

Musical notation for a Gavotte à 4. The piece is in 4/4 time and B-flat major. It consists of two staves. The first staff contains the melody, starting with a treble clef and a common time signature. The second staff contains the bass line, starting with a bass clef and a common time signature. The piece ends with a repeat sign and a double bar line.

16.

Musical notation for a Courente à 4. The piece is in 4/4 time and B-flat major. It consists of two staves. The first staff contains the melody, starting with a treble clef and a common time signature. The second staff contains the bass line, starting with a bass clef and a common time signature. The piece ends with a repeat sign and a double bar line.

Musical notation for a Courente à 4. The piece is in 4/4 time and B-flat major. It consists of two staves. The first staff contains the melody, starting with a treble clef and a common time signature. The second staff contains the bass line, starting with a bass clef and a common time signature. The piece ends with a repeat sign and a double bar line.

Four empty musical staves, likely for a second system or for a different instrument.

17.



Bal. à 4.



18.



Sarabande à 4.



19.
6.
4.
Chique à 4.

Musical notation for the first system of piece 19, measures 1-14. It features a treble clef, a key signature of one flat (B-flat), and a 4/4 time signature. The notation includes various note values, rests, and dynamic markings such as 'p' and 'f'. There are also some 'x' marks above certain notes.

Musical notation for the second system of piece 19, measures 15-28. It continues the melodic and harmonic material from the first system, ending with a double bar line and a repeat sign.

Musical notation for the third system of piece 19, measures 29-32. It concludes the piece with a final cadence.

20.
Conclusio à 5.

Musical notation for the first system of piece 20, measures 1-14. It features a treble clef, a key signature of one flat (B-flat), and a 5/4 time signature. The notation includes various note values, rests, and dynamic markings.

Musical notation for the second system of piece 20, measures 15-28. It continues the melodic and harmonic material from the first system, ending with a double bar line and a repeat sign.

21.



Sonata à 5.



Adagio. Piano.



Ccc

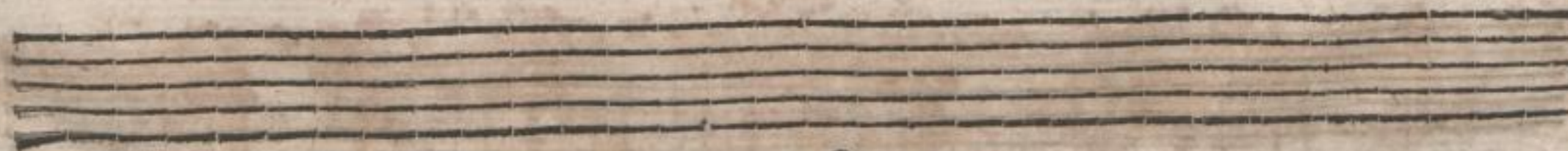
Verte.



Adagio,



Piano.



Ccc 2

22.



Allemande à 4.

Adagio.



23.

Adagio.
Courente à 4.

Ccc 3

24.



Intermedium à 5.



25.



Sarabande à 4.



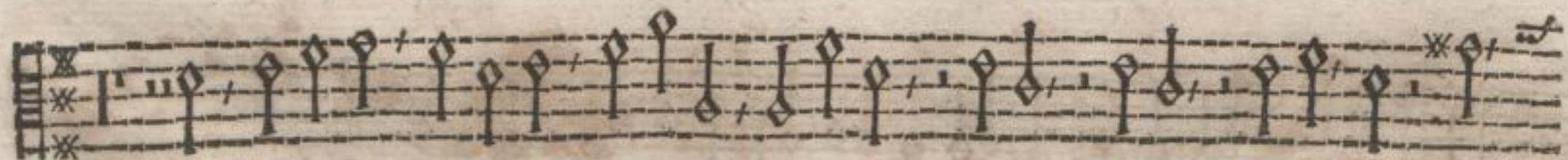
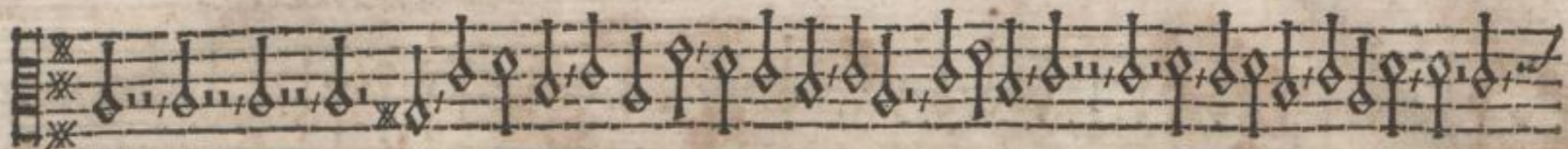
Piano.



26.

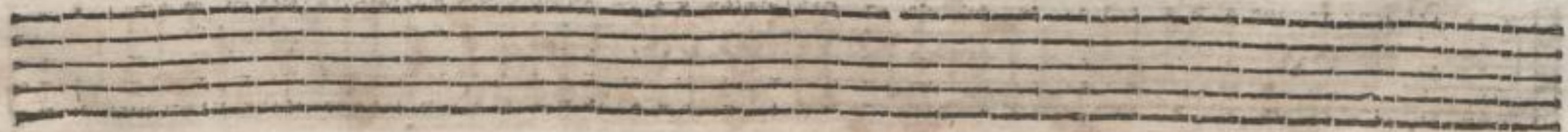


Chique à 5.





Conclusio à 5.



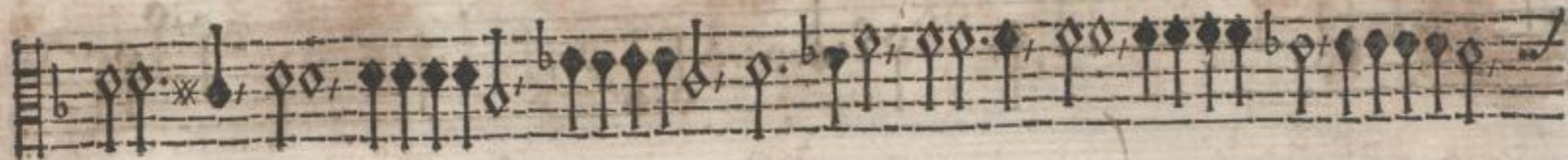
Ddd

28.



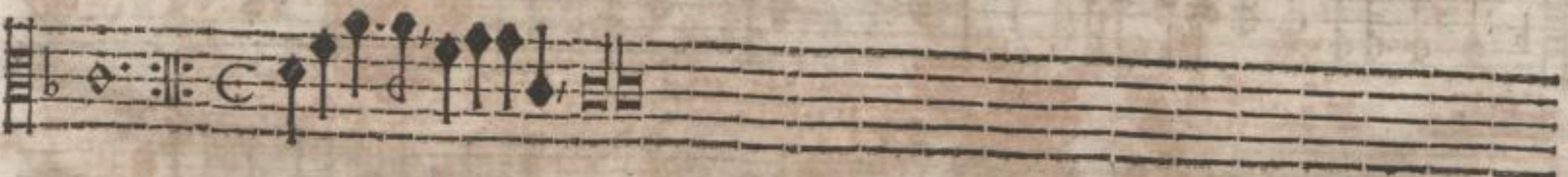
Sonata à 5.





Ddd 2

Verte.





Ddd 3





31.
Adagio.
Regeneratio à 5.



Adagio.



Adagio,

Allegro.

sc (29.) sc

Adagio.

A single musical staff containing a sequence of notes, primarily eighth and sixteenth notes, with some rests and slurs. The tempo marking "Adagio." is written below the staff.

Piano. Piano: Piano:

A single musical staff with notes and rests. The word "Piano." appears at the beginning, and "Piano:" appears twice below the staff, marking different sections of the piece.

A single musical staff with notes and rests, continuing the musical notation from the previous staff.

Four empty musical staves.

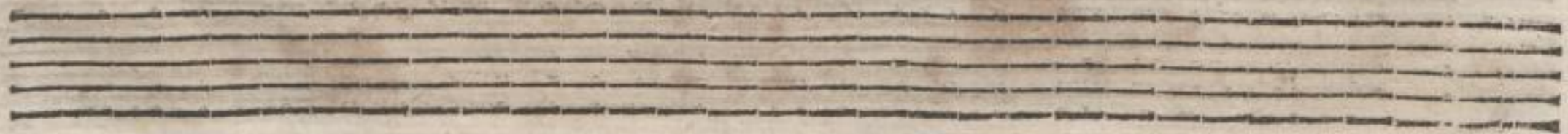
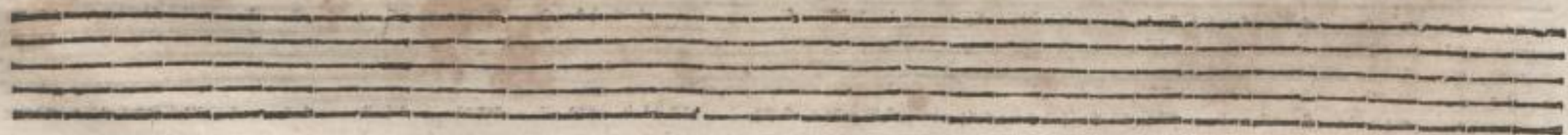
Four empty musical staves.

32.



Adagio.

Allemande à 4.



33.



Adagio.

Courante à 4.



Eee

34.

Sursum Deorsum à 4.

This system contains the first staff of music for 'Sursum Deorsum à 4.'. It features a treble clef, a key signature of one flat (B-flat), and a 3/2 time signature. The notation consists of a series of eighth and sixteenth notes with stems, some beamed together. A repeat sign is present towards the end of the staff.

Piano.

This system contains the second staff of music for 'Sursum Deorsum à 4.'. It continues the melodic line from the first staff with similar rhythmic patterns. The word 'Piano.' is written below the staff towards the right side.

This system shows an empty musical staff with a treble clef and a key signature of one flat, serving as a separator between the two main pieces.

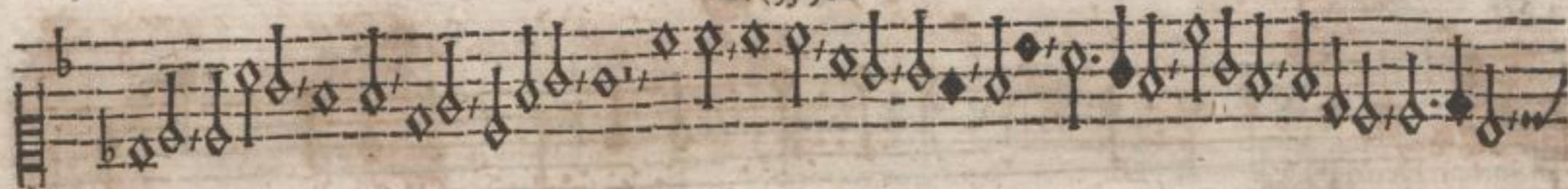
35.

Chique à 4.

This system contains the first staff of music for 'Chique à 4.'. It features a treble clef, a key signature of one flat, and a 3/2 time signature. The notation includes eighth and sixteenth notes, some with asterisks above them, and a repeat sign.

This system contains the second staff of music for 'Chique à 4.'. It continues the melodic line from the first staff, ending with a final cadence.

35 (33.) 36



36.



Adagio.
Conclusio à 5.



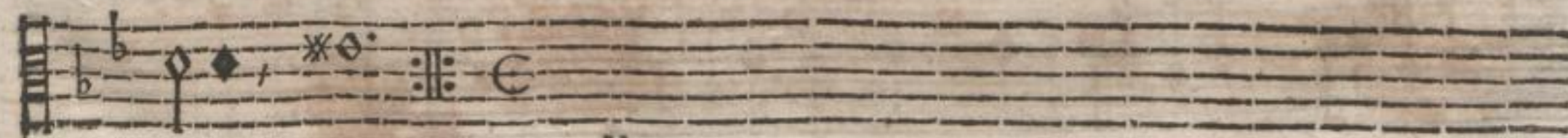
Ecc 2



Sonata à 5.
Adagio.

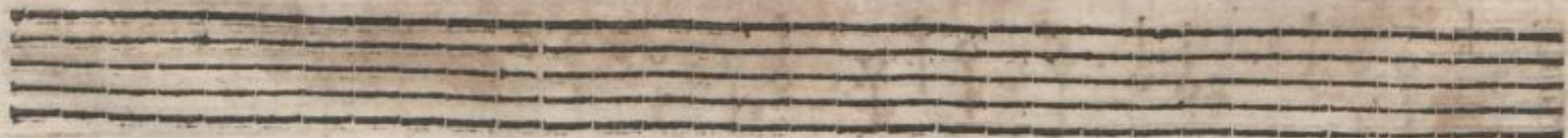


35.



Verte.

Ecc 3



38.

Adagio.

Allemande à 4.

39

Adagio.
Courente à 4.

Musical staff with notes and dynamics. The staff contains a series of notes, some with slurs and accents. A dynamic marking 'Piano.' is written below the staff.

Musical staff with notes and dynamics. The staff contains a series of notes, some with slurs and accents. A dynamic marking 'Piano.' is written below the staff.

40.

Musical staff with notes and dynamics. The staff contains a series of notes, some with slurs and accents. A dynamic marking 'Adagio.' is written below the staff. Below the staff, the text 'Sarabande à 4.' is written.

Musical staff with notes and dynamics. The staff contains a series of notes, some with slurs and accents. A dynamic marking 'Fff' is written below the staff.

Musical staff with notes and dynamics. The staff contains a series of notes, some with slurs and accents. A dynamic marking 'Fff' is written below the staff.



41.
Adagio.
Intermedium à 5.





Adagio.



42.



Adagio.

Allemande à 4.

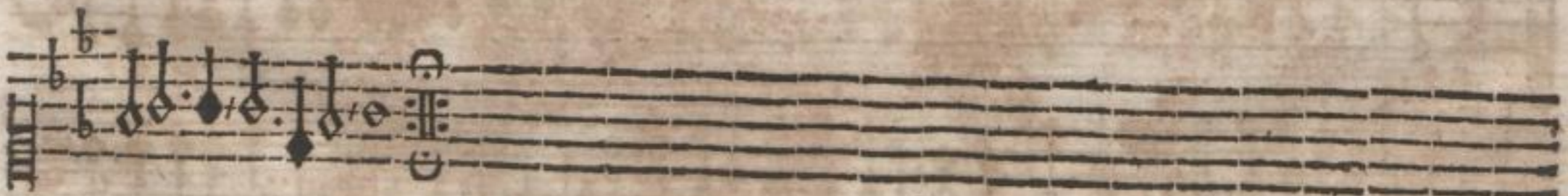


Fff 2

43.



Courante à 4.



44.



Allegro à 4.



Fff 3

45.



Adagio.
Sarabande à 4.



46.

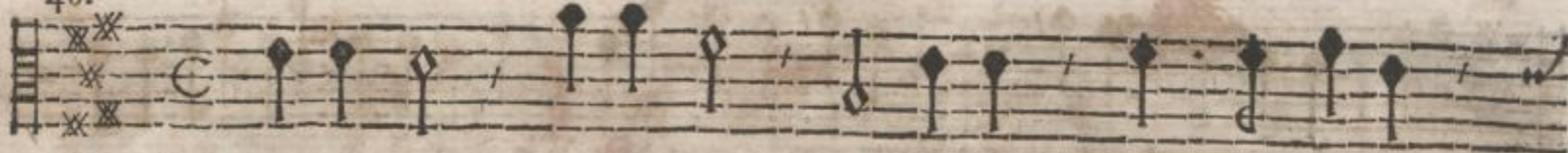
Chique à 4.



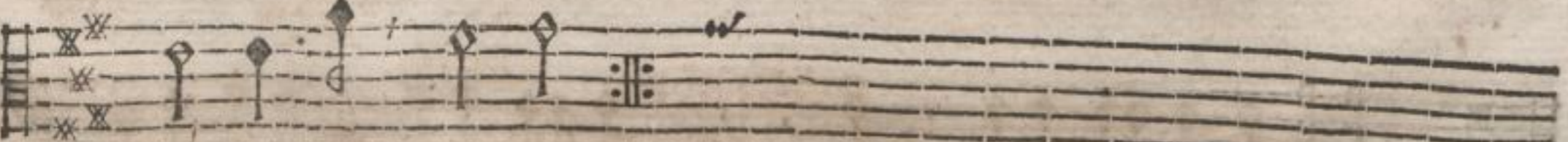
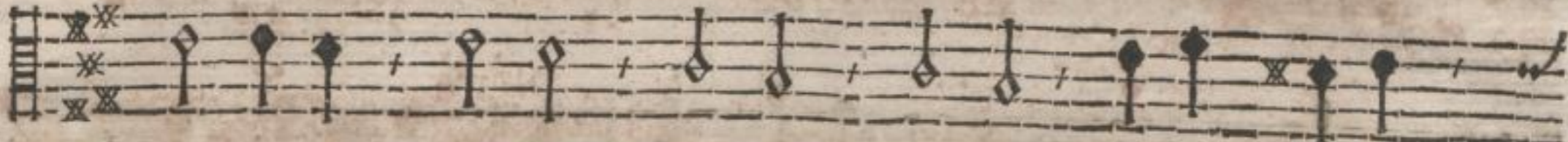
Adagio.
Conclusio à 5.



48.



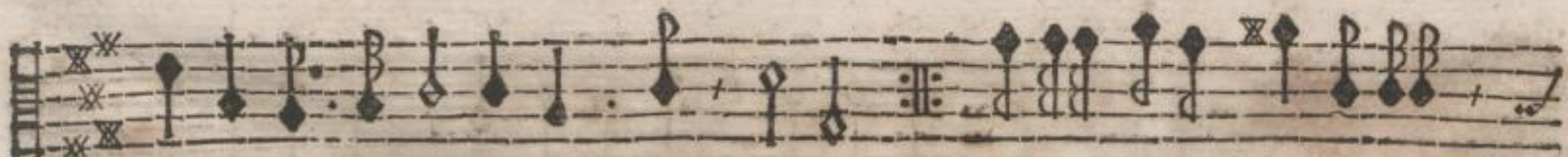
Paduana à 5.

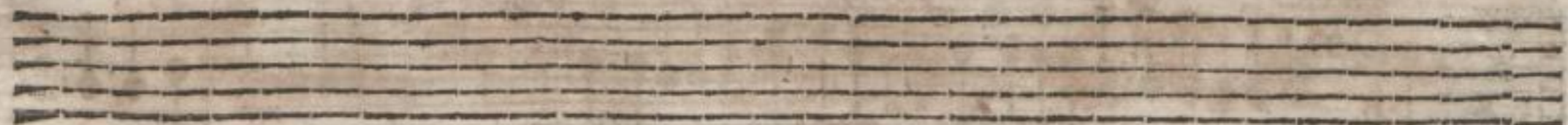


Verte.

Ggg







Ggg 2

49.

Adagio.
Galliarda à 5.



Ggg 3

50.

Handwritten musical notation for the first system of piece 50. It features a treble clef, a common time signature (C), and a key signature of one flat (B-flat). The notation includes a series of eighth and sixteenth notes, with some notes beamed together. There are three 'X' marks above the staff, likely indicating fingerings. The piece is labeled 'Bal. à 4.' below the staff.

Handwritten musical notation for the second system of piece 50. It continues the melodic line with similar rhythmic patterns and includes a repeat sign (double bar line with dots) in the middle. There are three 'X' marks above the staff.

Handwritten musical notation for the third system of piece 50. It concludes the piece with a final cadence. There are three 'X' marks above the staff.

51.

Handwritten musical notation for the first system of piece 51. It features a treble clef, a 3/2 time signature, and a key signature of one flat (B-flat). The notation includes a series of eighth and sixteenth notes. There are three 'X' marks above the staff, and the piece is labeled 'Courente à 4.' below the staff.

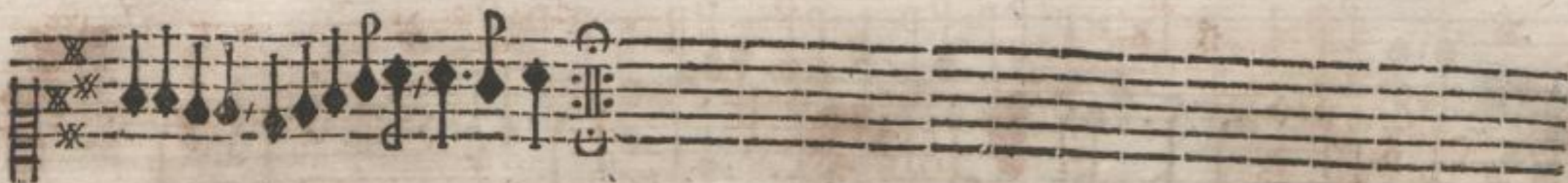
Handwritten musical notation for the second system of piece 51. It continues the melodic line with similar rhythmic patterns and includes a repeat sign. There are three 'X' marks above the staff.

Handwritten musical notation for the third system of piece 51. It concludes the piece with a final cadence. There are three 'X' marks above the staff.

52.



Gavotte à 4.



53.



Sarabande à 4.



54.

A musical staff with a treble clef and a 3/2 time signature. The staff contains a sequence of notes with stems and beams, including some notes with 'x' marks above them. The notes are mostly eighth and sixteenth notes.

Chique à 4.

A musical staff with a treble clef, continuing the notation from the first staff. It features a series of notes with stems and beams, some with 'x' marks above them.

A musical staff with a treble clef, continuing the notation. It shows a sequence of notes with stems and beams, some with 'x' marks above them.

A musical staff with a treble clef, continuing the notation. It ends with a double bar line and a repeat sign. The notes have stems and beams, with some 'x' marks above them.

Four empty musical staves at the bottom of the page.

55.



Adagio.

Conclusio à 4.



Hhh

56.



Adagio.
Sonata à 5.





Hhh 2

57.

58 (58.) 50



Adagio.
Allemande à 4.



58.



Courente à 4.



59.



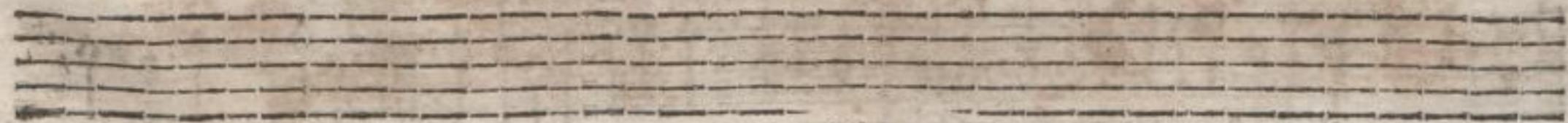
Allemande à 4.



60.



Sarabande à 4.



Hhh 3

61.



Gavotte à 4.



62.



Chique à 3.





63.



Conclusio à 5.



62

[Faint, illegible handwritten text on aged, stained paper]