

LINGER NOT DARLING

SERENADE

POETRY BY

GEO. COOPER

MUSIC BY

J. R. THOMAS.

3 $\frac{1}{2}$

CINCINNATI.

Published by JOHN CHURCH, Jr 66 West 4th St.

N.YORK.
W.A. Pond & Co.

BOSTON.
O. Dilsen & Co.

PHILA.
Lee & Walker.



LINGER NOT DARLING.

SERENADE.

Words by George Cooper.

Music by J. R. Thomas.

Andante Affetuoso.

The piano introduction consists of two staves in 6/8 time, marked 'Andante Affetuoso'. The right hand features a melodic line with a long slur over the first four measures. The left hand provides a harmonic accompaniment with chords and moving lines. A 'dim' (diminuendo) marking is present in the fourth measure of the right hand.

The first vocal line is a single staff in 6/8 time, containing the first two lines of lyrics. The melody is simple and lyrical, with a slight rise in pitch at the end of the second line.

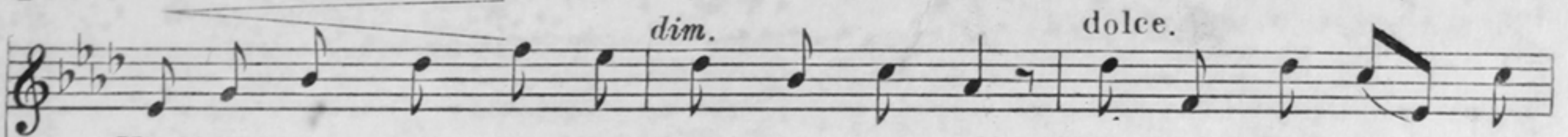
Linger not darling, a - wake from thy sleep, Sweetly the star of Love
 Linger not darling, the glim - er - ing sea, Sing's of thy beau ty in

The piano accompaniment for the first vocal line consists of two staves. The right hand has a steady accompaniment of chords, while the left hand has a simple bass line. The music is in 6/8 time and matches the tempo and mood of the introduction.

The second vocal line is a single staff in 6/8 time, containing the third and fourth lines of lyrics. The melody continues from the first line, with a slight dip in pitch at the end of the second line.

shines o'er the deep . . . ; Fairy wing'd zephyrs have gone to their rest,
 low melo - - dy . . . ; Roses and lilies are smiling in dreams,

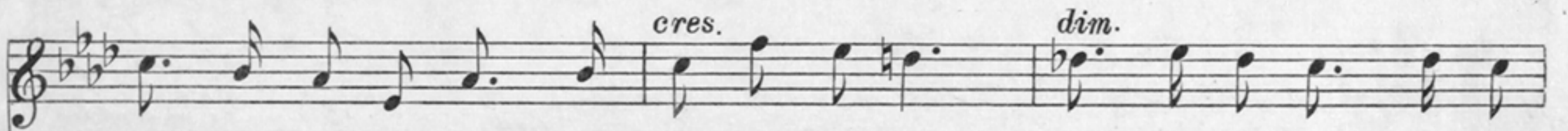
The piano accompaniment for the second vocal line consists of two staves. The right hand has a steady accompaniment of chords, while the left hand has a simple bass line. The music is in 6/8 time and matches the tempo and mood of the introduction.



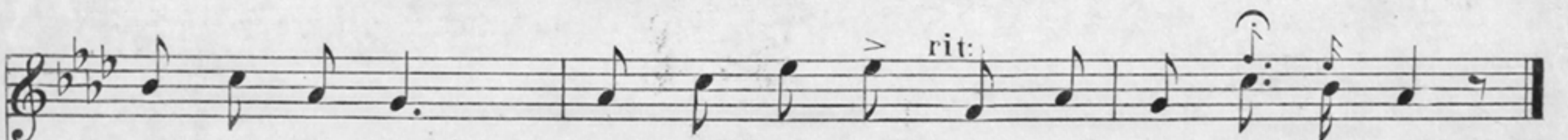
Kissing good night to the birds in their nest, Wake from thy radiant
Softly is heard the light step of the streams, Why art thou slumbering,



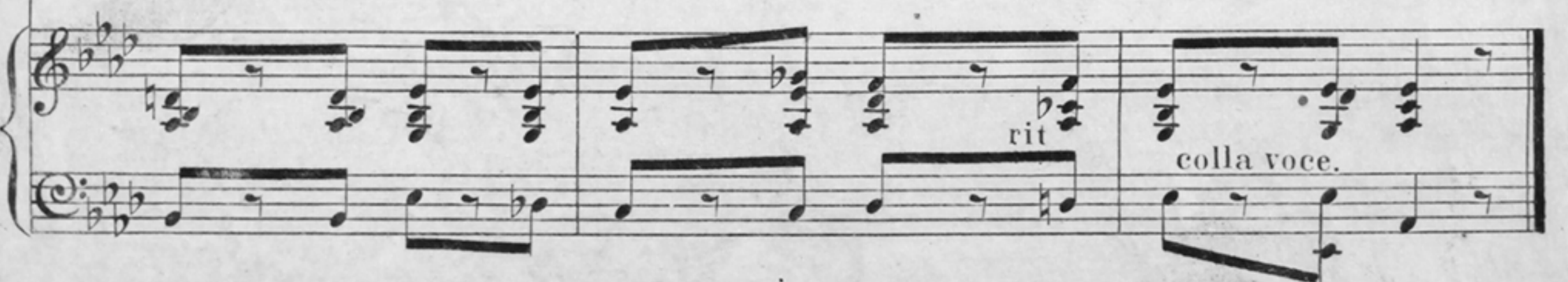
dreams of de - - light.. Fair-est of gems on the brow of the night.
every thing fair... Revels to night in the sil - very air.



Linger not darling I've something to tell, Un - der the leaves in the



shadow - y dell. Un - der the leaves in the shadow - y dell.



SOP.
Linger not darling I've something to tell, Under the leaves in the shadowy dell.

ALTO.
Linger not darling I've something to tell, Under the leaves in the shadowy dell.

TEN.
Linger not darling I've something to tell, Under the leaves in the shadowy dell.

BASS.
Linger not darling I've something to tell, Under the leaves in the shadowy dell.

PIANO.

Under the leaves in the shadow - y dell.

Under the leaves in the shadow - y dell.

f