

# 6. Sonate in h-moll

op. 3

Thomas Augustine Arne  
(1710-1778)

Largo

Cello

The Largo section consists of six staves of music. The first staff (measures 1-2) is in the bass clef with a key signature of two sharps (F# and C#) and a common time signature (C). It features a sequence of notes: G2, A2, B2, C3, D3, E3, F#3, G3, A3, B3, C4, D4, E4, F#4, G4, A4, B4, C5. Dynamics are marked *p*, *f*, *p*, *f*, *p*. The second staff (measures 3-5) continues the melody with a *f* dynamic. The third staff (measures 6-8) is in the bass clef with a key signature of one sharp (F#) and a common time signature (C), featuring a *p* dynamic followed by a *f* dynamic. The fourth staff (measures 9-11) is in the bass clef with a key signature of one sharp (F#) and a common time signature (C), featuring a *p* dynamic followed by *f*, *f*, and *p* dynamics. The fifth staff (measures 12-14) is in the bass clef with a key signature of one sharp (F#) and a common time signature (C), featuring a *f* dynamic followed by a *p* dynamic. The sixth staff (measures 15-16) is in the bass clef with a key signature of one sharp (F#) and a common time signature (C), featuring a *f* dynamic.

Allegro

The Allegro section consists of four staves of music. The first staff (measures 17-20) is in the bass clef with a key signature of two sharps (F# and C#) and a common time signature (C). It features a sequence of notes: G2, A2, B2, C3, D3, E3, F#3, G3, A3, B3, C4, D4, E4, F#4, G4, A4, B4, C5. The second staff (measures 21-23) is in the bass clef with a key signature of two sharps (F# and C#) and a common time signature (C), featuring a sequence of notes: G4, A4, B4, C5, D5, E5, F#5, G5, A5, B5, C6, D6, E6, F#6, G6, A6, B6, C7. The third staff (measures 24-26) is in the bass clef with a key signature of one sharp (F#) and a common time signature (C), featuring a sequence of notes: G4, A4, B4, C5, D5, E5, F#5, G5, A5, B5, C6, D6, E6, F#6, G6, A6, B6, C7. The fourth staff (measures 27-29) is in the bass clef with a key signature of one sharp (F#) and a common time signature (C), featuring a sequence of notes: G4, A4, B4, C5, D5, E5, F#5, G5, A5, B5, C6, D6, E6, F#6, G6, A6, B6, C7.

AM

## Arne - 6. Sonate in h-moll

13



17



20



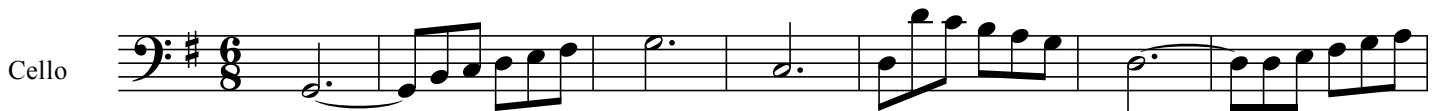
23



27



31

**Larghetto**

8



15

*p*

**Allegro**

Cello

5

9

14

17

20

23

28

33

38

43