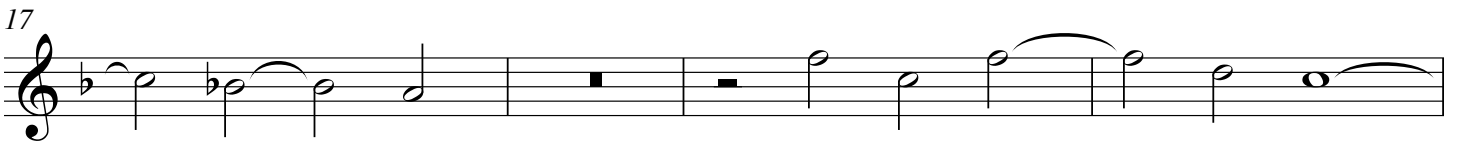
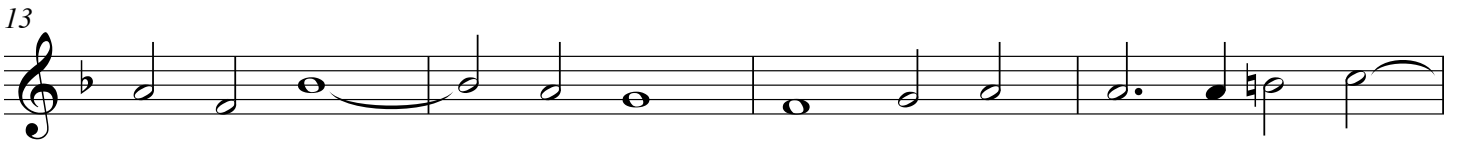


*FUGUES, et CAPRICES, à quatre parties,  
mises en partition pour l'orgue. (1660)*

Version originale,  
en partition,  
clés modernisées.  
BnF - Vm7.1812

*Fugue 9<sup>me</sup>*

**François ROBERDAY**  
(1624 - 1680)



38



Measures 38-43: Treble clef, key signature of one flat (B-flat), common time. The melody begins with a quarter note G4, followed by quarter notes A4, B-flat4, and C5. A half note G4-A4-B-flat4-C5 is tied across measures 39 and 40. Measure 41 contains a whole rest. Measure 42 has a quarter rest. Measure 43 contains quarter notes G4, A4, B-flat4, and C5.

44



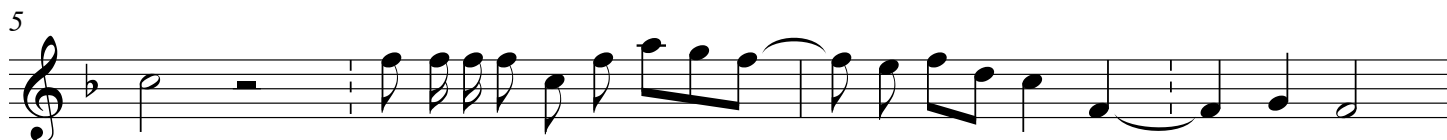
Measures 44-49: Treble clef, key signature of one flat (B-flat), common time. The melody continues with quarter notes D5, E5, F5, and G5. A half note G5-A5-B5-C6 is tied across measures 45 and 46. Measure 47 has a quarter rest. Measure 48 contains quarter notes G5, F5, E5, and D5. Measure 49 ends with a double bar line.

### Caprice sur le mesme sujet



Measures 5-8: Treble clef, key signature of one flat (B-flat), common time. The melody starts with a whole rest. Measures 6-8 feature a sixteenth-note triplet pattern: G4-A4-B-flat4, G4-A4-B-flat4, G4-A4-B-flat4.

5



Measures 9-12: Treble clef, key signature of one flat (B-flat), common time. Measure 9 has a whole rest. Measures 10-12 feature a sixteenth-note triplet pattern: G4-A4-B-flat4, G4-A4-B-flat4, G4-A4-B-flat4.

9



Measures 13-17: Treble clef, key signature of one flat (B-flat), common time. Measures 13-15 feature a sixteenth-note triplet pattern: G4-A4-B-flat4, G4-A4-B-flat4, G4-A4-B-flat4. Measure 16 has a quarter rest. Measure 17 features a sixteenth-note triplet pattern: G4-A4-B-flat4, G4-A4-B-flat4, G4-A4-B-flat4.

13



Measures 18-21: Treble clef, key signature of one flat (B-flat), common time. Measures 18-20 feature a sixteenth-note triplet pattern: G4-A4-B-flat4, G4-A4-B-flat4, G4-A4-B-flat4. Measure 21 has a whole rest.

18

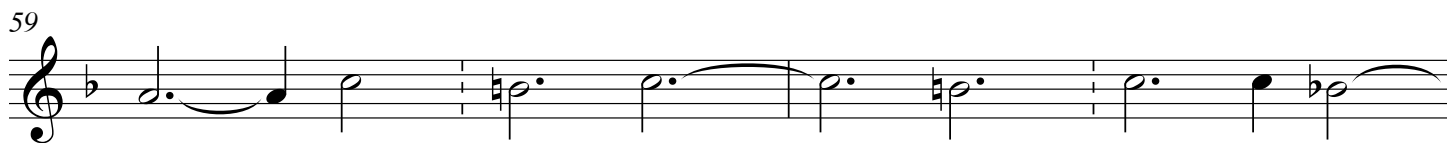
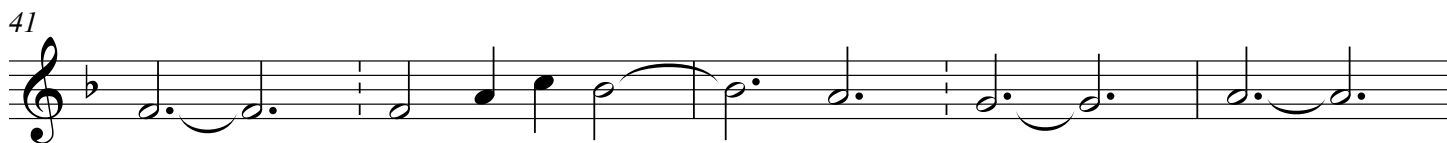


Measures 22-25: Treble clef, key signature of one flat (B-flat), common time. Measures 22-24 feature a sixteenth-note triplet pattern: G4-A4-B-flat4, G4-A4-B-flat4, G4-A4-B-flat4. Measure 25 has a quarter rest.

22



Measures 26-29: Treble clef, key signature of one flat (B-flat), common time. Measures 26-28 feature a sixteenth-note triplet pattern: G4-A4-B-flat4, G4-A4-B-flat4, G4-A4-B-flat4. Measure 29 has a quarter rest.



*FUGUES, et CAPRICES, à quatre parties,  
mises en partition pour l'orgue. (1660)*

Version originale,  
en partition,  
clés modernisées.  
BnF - Vm7.1812

*Fugue 9<sup>me</sup>*

**François ROBERDAY**  
(1624 - 1680)

Haute-contre

5

9

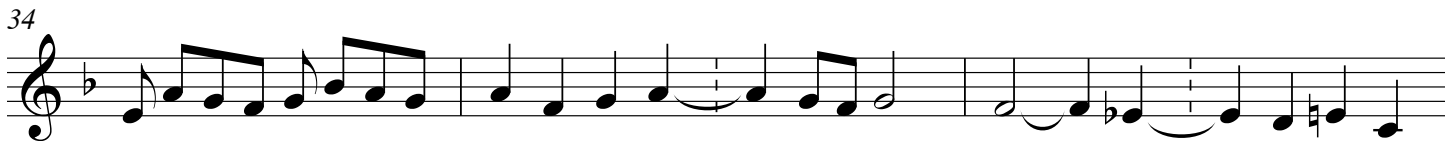
13

16

20

25

29



### Caprice sur le mesme sujet



23



26



30



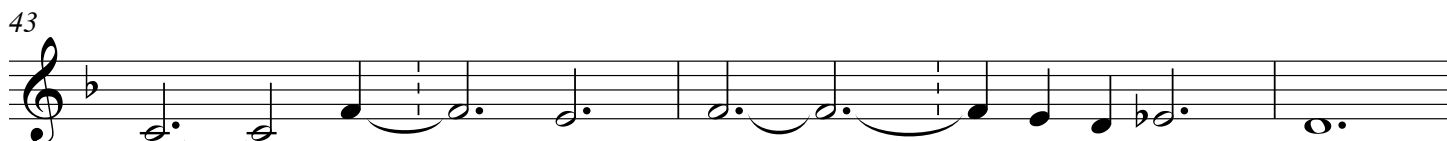
34



39



43



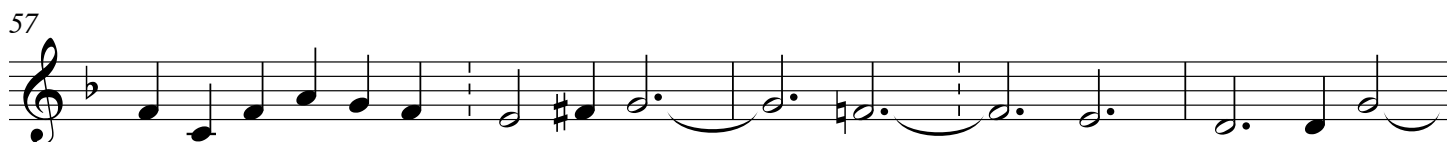
48



53



57



62

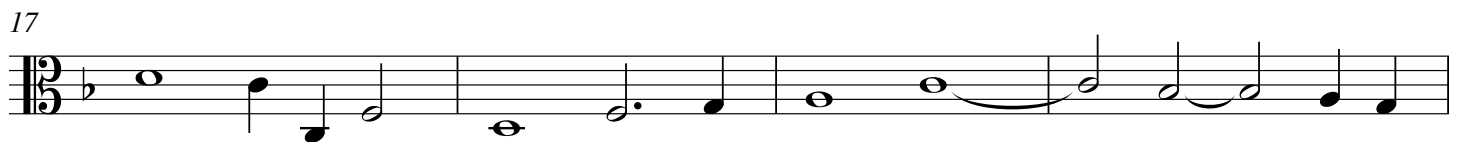
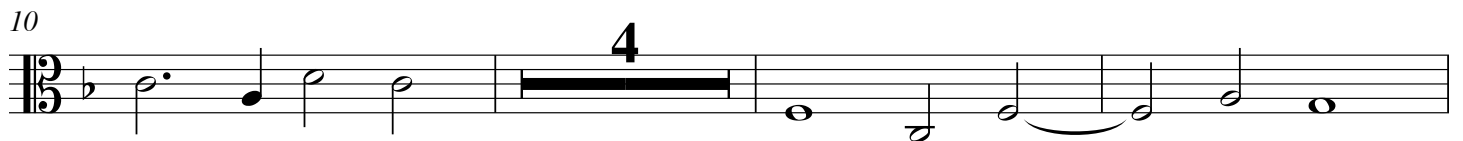


*FUGUES, et CAPRICES, à quatre parties,  
mises en partition pour l'orgue. (1660)*

Version originale,  
en partition,  
clés modernisées.  
BnF - Vm7.1812

*Fugue 9<sup>me</sup>*

**François ROBERDAY**  
(1624 - 1680)



31



39



45



### Caprice sur le mesme sujet



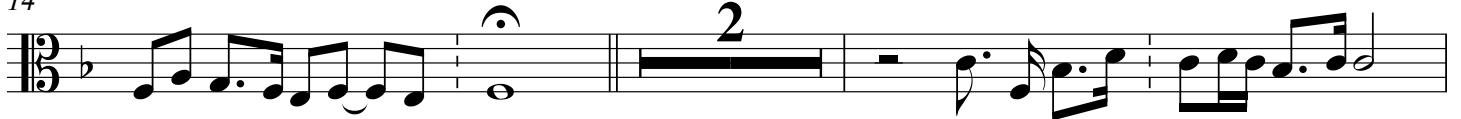
6



10



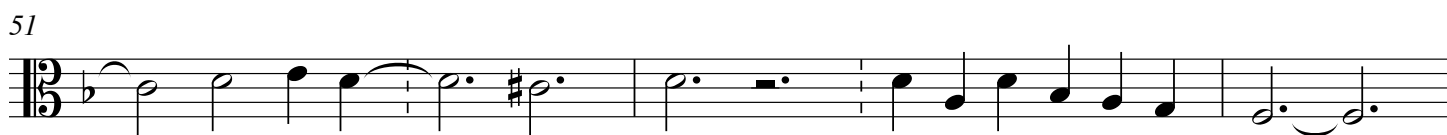
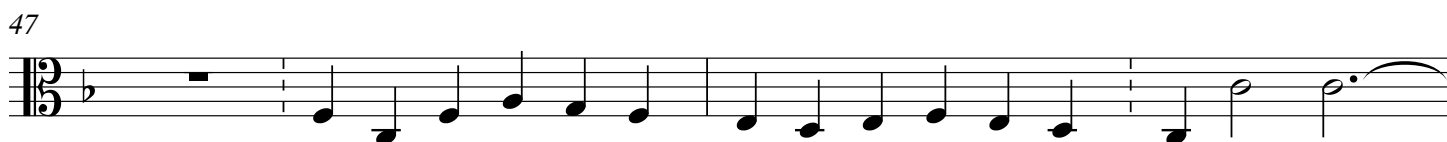
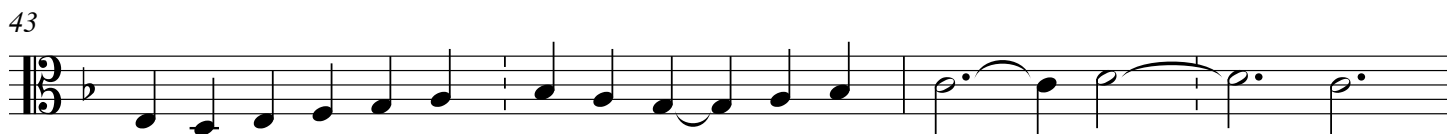
14



20





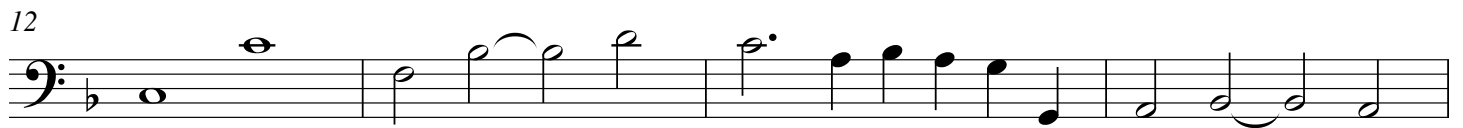
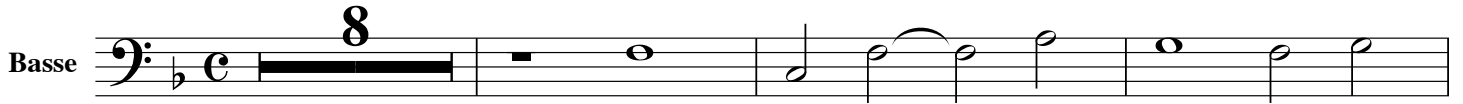


*FUGUES, et CAPRICES, à quatre parties,  
mises en partition pour l'orgue. (1660)*

Version originale,  
en partition,  
clés modernisées.  
BnF - Vm7.1812

*Fugue 9<sup>me</sup>*

**François ROBERDAY**  
(1624 - 1680)



## Caprice sur le mesme sujet

4

7

11

16

3

2

23

26

30

6/4

33

3

40

45

49

54

59

62