

PRELUDE in G MAJOR

for C Trumpet and String Orchestra

Score (01':26")

Melchior Schildt (1592 - 1667)

Arr. Michel Rondeau

Andante ♩ = 85

Trumpet in C

Violin I

Violin II

Viola

Cello

Double Bass

pizz.

This system contains the first five measures of the score. The Trumpet in C part begins with a half note G4, followed by quarter notes A4, B4, and C5. The Violin I part has a rhythmic pattern of eighth notes. The Violin II part has a similar rhythmic pattern. The Viola part has a half note G3, followed by quarter notes A3, B3, and C4. The Cello part has a half note G2, followed by quarter notes A2, B2, and C3. The Double Bass part has a half note G2, followed by quarter notes A2, B2, and C3. The tempo is marked Andante with a metronome marking of ♩ = 85.

Piu mosso ♩ = 105

C Tpt.

Vln. I

Vln. II

Vla.

Vc.

D.B.

This system contains measures 6 through 10. The C Tpt. part has a half note G4, followed by quarter notes A4, B4, and C5. The Vln. I part has a rhythmic pattern of eighth notes. The Vln. II part has a similar rhythmic pattern. The Vla. part has a half note G3, followed by quarter notes A3, B3, and C4. The Vc. part has a half note G2, followed by quarter notes A2, B2, and C3. The D.B. part has a half note G2, followed by quarter notes A2, B2, and C3. The tempo is marked Piu mosso with a metronome marking of ♩ = 105.

PRELUDE in G MAJOR - Schildt - Score

2
11

C Tpt.

Vln. I

Vln. II

Vla.

Vc.

D.B.

arco

Detailed description: This system of the score covers measures 2 through 11. It features six staves: C Trumpet (C Tpt.), Violin I (Vln. I), Violin II (Vln. II), Viola (Vla.), Violoncello (Vc.), and Double Bass (D.B.). The key signature is G major (one sharp). The C Tpt. staff has a fermata over measure 2 and then enters in measure 3. The Vln. I staff has a fermata over measure 2 and enters in measure 11. The Vln. II staff begins in measure 2. The Vla. staff begins in measure 2. The Vc. staff has a fermata over measure 2 and enters in measure 10. The D.B. staff has a fermata over measure 2 and enters in measure 10, with the instruction 'arco' written above the staff.

17

C Tpt.

Vln. I

Vln. II

Vla.

Vc.

D.B.

tr

Detailed description: This system of the score covers measures 17 through 26. It features the same six staves as the previous system. The C Tpt. staff has a trill (tr) over the first note in measure 17. The Vln. I staff has a complex melodic line with a slur and a grace note in measure 19. The Vln. II staff begins in measure 17. The Vla. staff begins in measure 17. The Vc. staff begins in measure 17. The D.B. staff begins in measure 17.

PRELUDE in G MAJOR - Schildt - Score

23

C Tpt.

Vln. I

Vln. II

Vla.

Vc.

D.B.

28

C Tpt.

Vln. I

Vln. II

Vla.

Vc.

D.B.

PRELUDE in G MAJOR - Schildt - Score

33

C Tpt.

Vln. I

Vln. II

Vla.

Vc.

D.B.

rit.

PRELUDE in G MAJOR

for C Trumpet and String Orchestra

Trumpet in B \flat

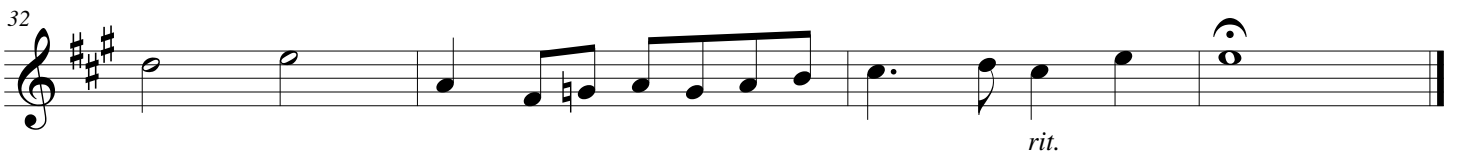
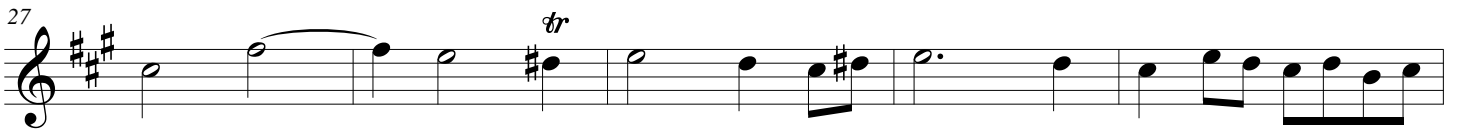
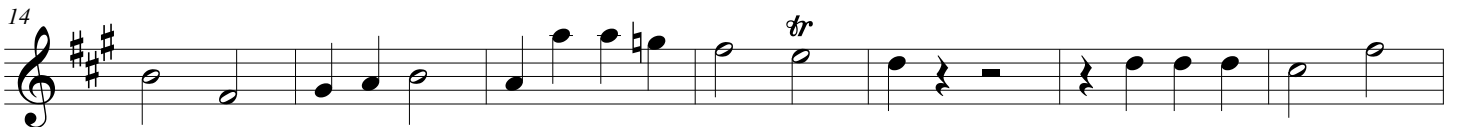
Melchior Schildt (1592 - 1667)

Arr. Michel Rondeau

Andante $\text{♩} = 85$



Piu mosso $\text{♩} = 105$



PRELUDE in G MAJOR

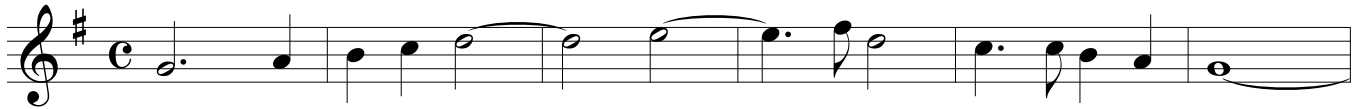
for C Trumpet and String Orchestra

Trumpet in C

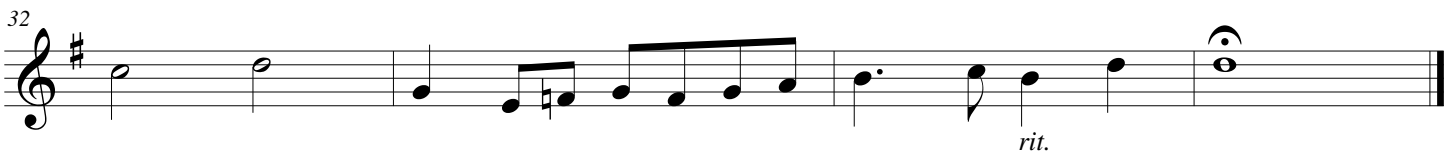
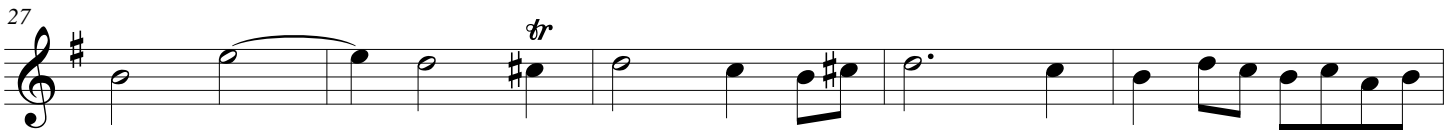
Melchior Schildt (1592 - 1667)

Arr. Michel Rondeau

Andante ♩ = 85



Piu mosso ♩ = 105



PRELUDE in G MAJOR

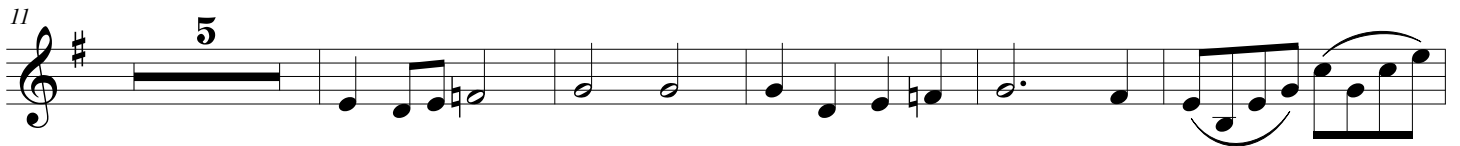
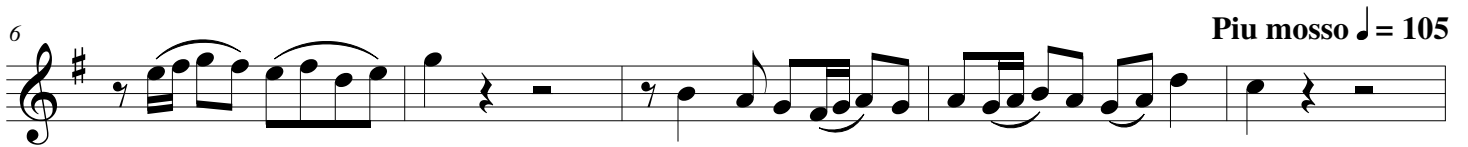
for C Trumpet and String Orchestra

Violin I

Melchior Schildt (1592 - 1667)

Arr. Michel Rondeau

Andante ♩ = 85



PRELUDE in G MAJOR

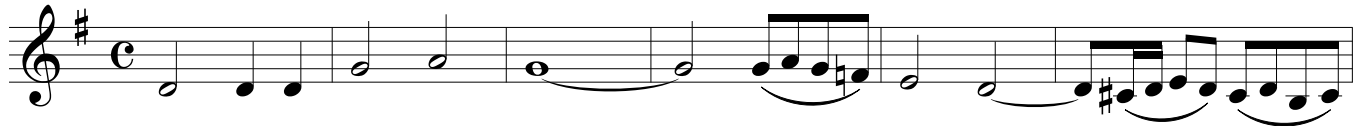
for C Trumpet and String Orchestra

Violin II

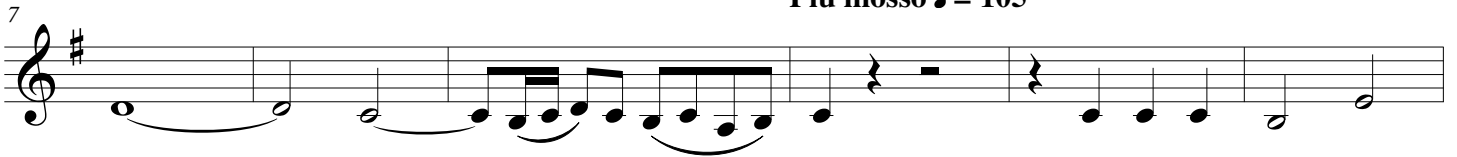
Melchior Schildt (1592 - 1667)

Arr. Michel Rondeau

Andante ♩ = 85



Piu mosso ♩ = 105



PRELUDE in G MAJOR

for C Trumpet and String Orchestra

Viola

Melchior Schildt (1592 - 1667)

Arr. Michel Rondeau

Andante ♩ = 85



Piu mosso ♩ = 105

7



13



20



27



32



PRELUDE in G MAJOR

for C Trumpet and String Orchestra

Double Bass

Melchior Schildt (1592 - 1667)

Arr. Michel Rondeau

Andante ♩ = 85

pizz.



Piu mosso ♩ = 105

7



16



25



30

