

BEAUTIFUL VENICE!



Drawn on Stone by J. Holly

Engraved by P. S. Inval. Philad.

BALLAD.

The Poetry written and respectfully dedicated to

REV<sup>d</sup> W. CUNNINGHAM,

*J. E. Carpenter*

The Music Composed by

JOSEPH PHELIP KNIGHT.

PHILADELPHIA.

Pr 25 Cts. }  
Guitar, 12. } *Nett.*

Published by Lee & Walker, N<sup>o</sup> 120, Walnut Street.

# BEAUTIFUL VENICE.

WRITTEN BY J. E. CARPENTER.

COMPOSED BY J. P. KNIGHT.

*Moderato.*

cling to my heart As thy fast fading shores from my vi- - sions de-part . . . Oh!

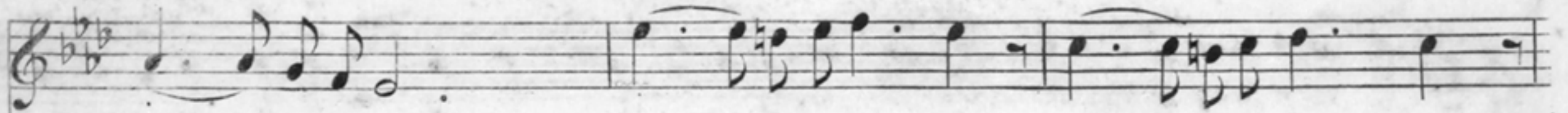
po- - - e-sy's home is thy light colonnades, Where the winds gently sigh as the

sweet twilight fades I have known ma-ny homes but the dwell- - ing for me . . . Is

beau- - - tiful Ve- - nice the bride of the sea . . . Is beau- - - tiful Ve- - nice the

RALL:

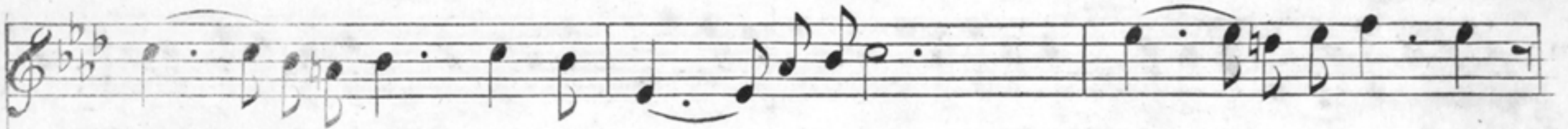
A TEMPO.



bride of the sea! Beau- - - tiful Ve- - - nice, beau- - - tiful Ve- - - nice,



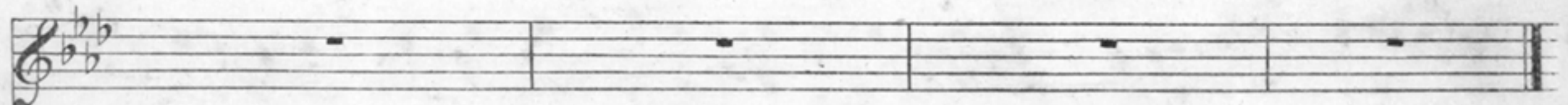
colla voce.



Beau- - - tiful Ve- - - nice the bride of the sea! Beau- - - tiful Ve- - - nice,



beau- - - tiful Ve- - - nice, beau- - - tiful Ve- - - nice the bride of the sea!



mf

p

rall:

*p*

Beau- - - - tiful Ve- - - nice Queen of the earth, Where dark eyes shine brightly 'mid

*p*

mu- - - sic and mirth; Where gay serena- - - ders by light of the star, Oft

min- - - gle their songs with the dul- - - cet guitar: All that's love- - - ly in life, all that's

death- - - less in song, Fair I- - - - taly's Isles to thy re gions belong. I have

known many homes, but the dwell\_ing for me... Is beau tiful Ve\_nice the

Bride of the sea!... Is beau\_tiful Ve\_nice the bride of the sea!

RALL:  
colla voce.

A TEMPO.

Beau\_ tiful Ve\_nice, beau\_ tiful Ve\_nice, beau\_ tiful Ve\_nice the bride of the sea!

Beau\_ tiful Venice beau\_ tiful Ve\_nice beau\_ tiful Venice the bride of the sea!

mf p rall.