

Assaggi à Violino Solo

BeRI 301–320,323–324

Ouverture à Violino Solo

BeRI 321-322

Johan Helmich Roman

1694 – 1758

Published by Johan Tufvesson for Project Runeberg.

Non-commercial copying welcome

Revision : 1.7

Preface

This is an edition of Johan Helmich Roman's (1694–1758) *Assaggi à Violino Solo* and *Overture à Violino Solo*, with BeRI numbers (after Ingmar Bengtsson) 301–324. It is in no way a complete collection of Roman's solo violin music, but to my knowledge it is the most comprehensive edition of his Assaggi, rivalled only by Bengtsson and Frydén's *Assaggi à Violino Solo* from Edition Reimers which include BeRI 301, 303, 310, 314, 320 and 324. The Overtures are not known from any modern editions. The explanation of the missing BeRI numbers in this edition (308, 309, 315, 316) is that those numbers were left empty to provide space if those pieces were later rediscovered. The number series was constructed from the Brant copy (see below), which has blank pages where these Assaggi probably resided.

The main source for this edition is *Ro nr 60*, a manuscript written by Per Brant (1714–1767), Romans pupil and successor. This manuscript covers BeRI 301–322, except the missing numbers described above. The other sources used are *Ro nr 97(2a)* and *Ro nr 61(2)*, which BeRI 323 and 324 are taken from. All sources are now preserved at the Music Library of Sweden in Stockholm, who graciously has provided the copies that I have used. If any questions about this edition arise, it may be wise to compare to the sources which should be available from the same place (<http://www.lysator.liu.se/runeberg/rassavln/>) as this edition. Other sources used include facsimiles of the print of BeRI 314, here added as an appendix, from Bengtsson and Frydén's *Assaggi à Violino Solo*.

While making this edition I have always tried to keep it as close to the original score as possible. For example, the beams and slurs are the same as in the original manuscript. All accidentals have been copied exactly as written, but in cases where today's practice is different, I have tried to clarify by putting accidentals *above* the staves. In the original, some passages were written in soprano, alto, and even bass clefs, but these have been converted to treble clef. In the case of the bass clef, the music has also been octavated as customary with music by Roman. See my edition of BeRI 7, also available for free at <http://www.lysator.liu.se/runeberg/rsjkmus/>, for more examples of this practice.

Many of the ornaments in the Brant copy can be understood better if one compare the two movements in the appendix to the corresponding movements in the main edition. In this print Roman has written out many ornaments and arpeggios.

Assaggio (BeRI number)	Page
301. A major	1
302. B flat major	8
303. C major	12
304. D major	17
305. E major	18
306. F major	20
307. G major	27
310. c minor	30
311. d minor	37
312. e minor	42
313. f sharp minor	50
314. g minor	55
317. A major	60
318. G major	66
319. E major	68
320. g minor	70
Overture (BeRI number)	
321. Overture in E flat major	74
322. Overture in E flat major	77
Assaggio (BeRI number)	
323. a minor	81
324. b minor	86
Appendix (BeRI number)	
314:2. Print supervised by Roman	92
314:4. Print supervised by Roman	94

The purpose of this edition, as well as all other music released by me, is a combination of me trying to learn more about 17:th and 18:th century music, and, at the same time, helping other people to get hold of interesting and rare music. Suggestions and corrections can be sent to the address below.

Published by Johan Tufvesson (tuben@lysator.liu.se) in 1999 using only free software; T_EX, the macro package M_usiX_T_EX and the preprocessor PMX. You are welcome to make copies of this work as long as it is not for commercial reasons.

Assaggio à Violino Solo.

BeRI 314

Johan Helmich Roman (1694-1758)

Violino

4

7 Non tanto

11

14

17

20 *tr*

23 *tr*

(Allegro)

5 *tr*

8 *tr*

13

17

21

25

29

33

36

40

44

48

52

57

60

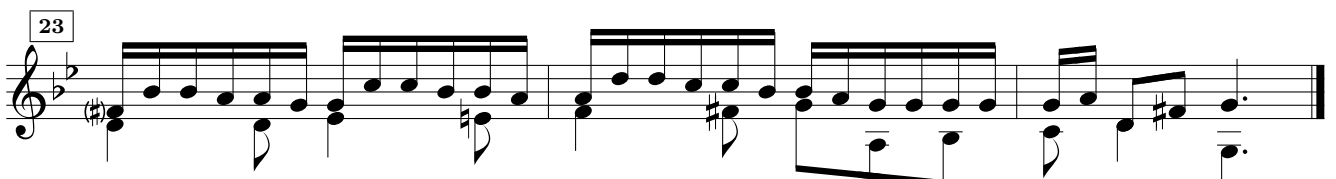
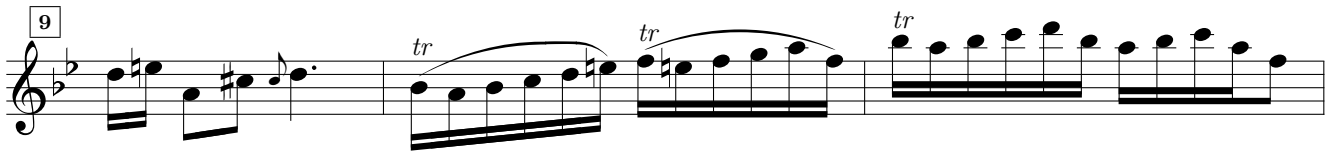
64

67

71

The image displays a musical score for a piece in 12/8 time, consisting of five staves of music. The key signature is one flat (B-flat). The first staff begins with a treble clef and a 12/8 time signature. The second staff starts with a measure number '3' in a box and includes trill ornaments ('tr') over several notes. The third staff starts with a measure number '5' in a box and also features trills. The fourth staff starts with a measure number '7' in a box and includes trills. The fifth staff starts with a measure number '9' in a box and includes trills. The music is written in a single melodic line on a treble clef staff, with a bass clef staff below it providing a harmonic accompaniment. The notation includes eighth and sixteenth notes, rests, and trill ornaments.

(Non troppo Allegro)



Assaggio à Violino Solo.

BeRI 314:1 (print) / 2 (P. Brant)

Johan Helmich Roman (1694-1758)

Allegro

Violino

5

9

14

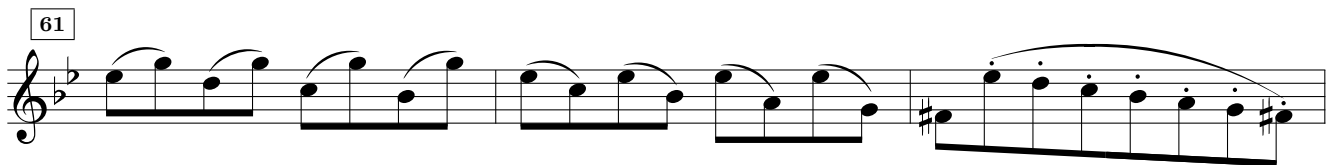
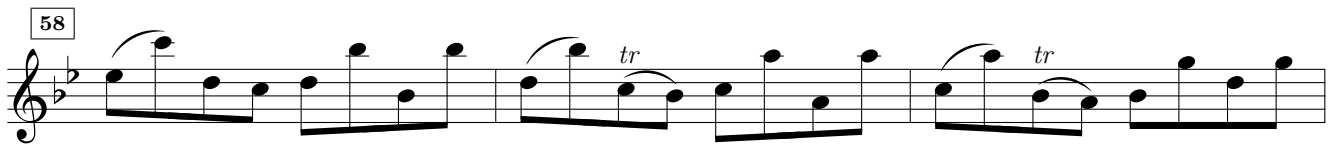
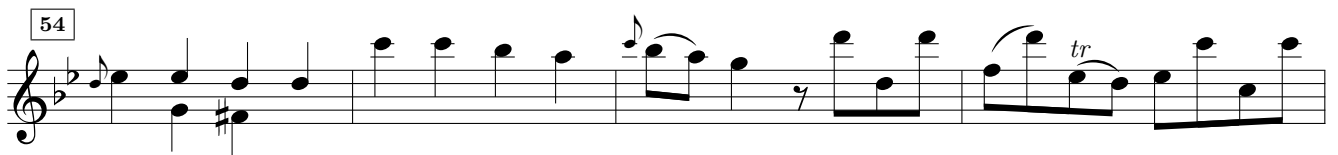
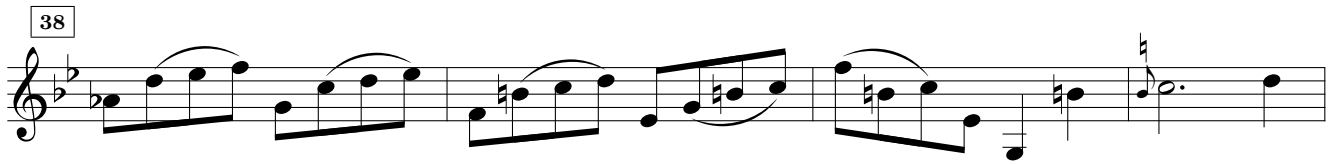
18

22

26

30

34



Tempo di minuetto

BeRI 314:2 (print) / 4 (P. Brant)

Johan Helmich Roman (1694-1758)

Non troppo Allegro

Violino

4

7

10

13

16

19

23