

# DEUX ALLEMANDES

Score (03':05'')

for Oboe and Harpsichord

François de Chancy (1600? - 1656)

Arr. Michel Rondeau

Allemande I - Moderato  $\text{♩} = 75$

Oboe

Harpsichord

Ob.

Hpschd.

Ob.

Hpschd.

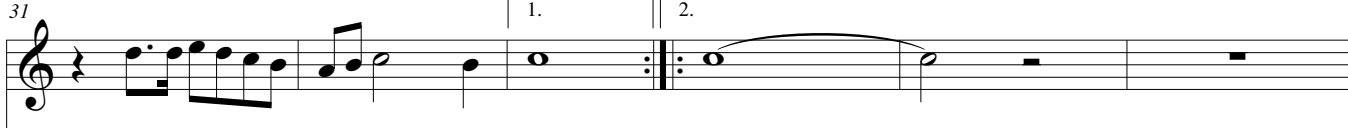
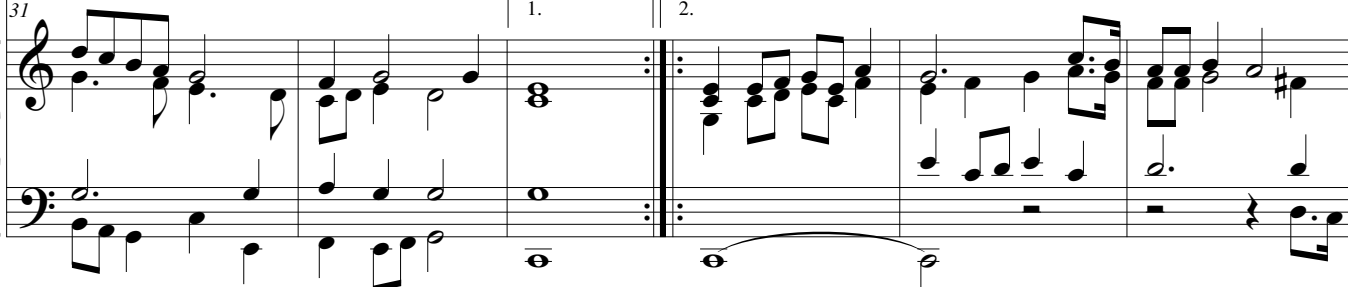
DEUX ALLEMANDES - Chancy Score

Ob.  

Ob.  

Allemande II - Andante

Ob.  

Ob.  

DEUX ALLEMANDES - Chancy Score

37

Ob.

Hpschd.

Detailed description: This system contains measures 37 through 41. The Oboe part (Ob.) begins with a whole rest in measure 37, followed by a melodic line starting in measure 38. The Harpsichord part (Hpschd.) consists of two staves. The right hand plays a rhythmic pattern of eighth and sixteenth notes, while the left hand provides a steady accompaniment of eighth notes. Measure 41 ends with a repeat sign.

42

Ob.

Hpschd.

Detailed description: This system contains measures 42 through 45. The Oboe part (Ob.) has a melodic line with a sharp sign above the staff in measure 42. The Harpsichord part (Hpschd.) continues with its two-staff accompaniment. Measure 45 ends with a repeat sign.

47

Ob.

Hpschd.

Detailed description: This system contains measures 47 through 50. The Oboe part (Ob.) features a trill (tr) in measure 49. The Harpsichord part (Hpschd.) concludes the piece in measure 50 with a final chord in both hands. Measure 50 ends with a double bar line and repeat dots.

# DEUX ALLEMANDES

Oboe

for Oboe and Harpsichord

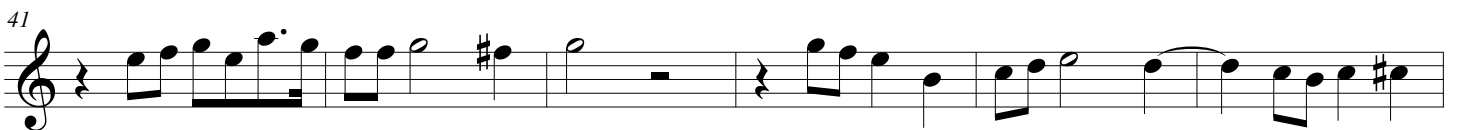
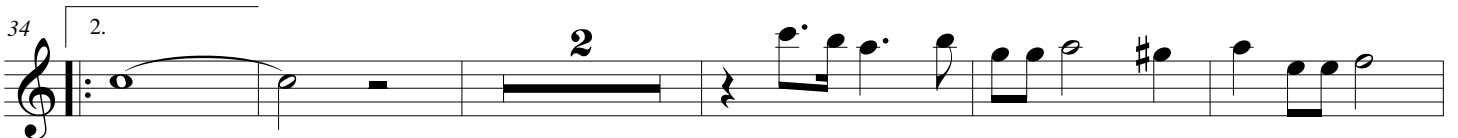
François de Chancy (1600? - 1656)

Arr. Michel Rondeau

Allemande I - Moderato  $\text{♩} = 75$



Allemande II - Andante



# DEUX ALLEMANDES

for Oboe and Harpsichord

François de Chancy (1600? - 1656)

Arr. Michel Rondeau

## Harpsichord

Oboe

Allemande I - Moderato  $\text{♩} = 75$

Harpsichord

Ob.

Hpschd.

Ob.

Hpschd.

DEUX ALLEMANDES - Chancy Harpsichord

Ob. 

Hpschd. 

Ob. 

Hpschd. 

Ob. 

**Allemande II - Andante**

Hpschd. 

Ob. 

Hpschd. 

DEUX ALLEMANDES - Chancy Harpsichord

Ob. <sup>37</sup>

Hpschd. <sup>37</sup>

This system contains measures 37 to 41. The Oboe part (Ob.) begins with a whole rest in measure 37, followed by a melodic line starting in measure 38. The Harpsichord part (Hpschd.) is written in grand staff with a treble and bass clef, featuring a rhythmic accompaniment of eighth and sixteenth notes.

Ob. <sup>42</sup>

Hpschd. <sup>42</sup>

This system contains measures 42 to 46. The Oboe part (Ob.) has a melodic line with a trill in measure 45. The Harpsichord part (Hpschd.) continues with its accompaniment, including a trill in the right hand in measure 45.

Ob. <sup>47</sup>

Hpschd. <sup>47</sup>

This system contains measures 47 to 51, ending with a double bar line. The Oboe part (Ob.) features a trill in measure 50. The Harpsichord part (Hpschd.) concludes with a final chord in both hands in measure 51.