

MARCELLO

*6. Sonata à Violoncello Solo.*

OPERA PRIMA.

---

Leipzig  
Mus. No.  
41

VI SONATA

in Violoncello Solo e Basso Continuo

BENEDETTO MARCELLO

NOBILIS VENETO

Opera Prima

Impresso in Venezia

FRANCESCO ZAPPALÀ

Opera Prima

VI SONATA

a Violoncello Solo e Basso Continuo.

*di*

BENEDETTO MARCELLO

NOBILE VENETO.

Opera Prima.

Imprimé aux Depens

de GERHARD FREDRIK WITVOGEL,

Chez le quel on les Trouve

A AMSTERDAM.

*N<sup>o</sup> 15.*

SONATA I.

*Largo.*

Handwritten musical score for Sonata I, page 1. The score is written in G major and 3/4 time, marked 'Largo'. It consists of seven systems of two staves each. The notation includes treble and bass clefs, a key signature of one flat, and a common time signature. The music features various rhythmic patterns, including eighth and sixteenth notes, and rests. Fingerings are indicated by numbers 1-5. Trills are marked with a 't' above the notes. The piece concludes with a double bar line and repeat dots.

*Allegro.*

*Piano.*

*Largo.*

*Allegro.*



*Largo.*

*Andante.*

**SONATA III**

*Adagio.*



*Allegro.*

Handwritten musical score for page 10, featuring six systems of piano and violin staves. The piano part includes various chordal textures and fingerings, while the violin part features melodic lines with slurs and accents.

Handwritten musical score for page 11, featuring six systems of piano and violin staves. The piano part includes dynamic markings like "Piano" and "Forte", and a "Largo" section. The violin part continues with melodic lines.

*Allegro.*

SONATA IV.

*Adagio.*

*Allegro.*

Musical notation for the first system on page 14, featuring a treble and bass staff. The tempo is marked *Allegro.* The bass staff includes fingerings such as 6, 6, 5, 6, 6, 5.

Musical notation for the second system on page 14, showing a treble and bass staff with complex rhythmic patterns and fingerings.

Musical notation for the third system on page 14, featuring a treble and bass staff with various fingerings and a trill marking.

Musical notation for the fourth system on page 14, showing a treble and bass staff with a trill and specific fingerings.

Musical notation for the fifth system on page 14, featuring a treble and bass staff with a flat key signature change and various fingerings.

Musical notation for the sixth system on page 14, showing a treble and bass staff with a trill and specific fingerings.

Musical notation for the first system on page 15, featuring a treble and bass staff with various fingerings.

Musical notation for the second system on page 15, showing a treble and bass staff with complex rhythmic patterns and fingerings.

*Piano.*

Musical notation for the third system on page 15, featuring a treble and bass staff with a tempo marking of *Piano.* and various fingerings.

*Largo.*

Musical notation for the fourth system on page 15, showing a treble and bass staff with a tempo marking of *Largo.* and a 3/4 time signature change.

Musical notation for the fifth system on page 15, featuring a treble and bass staff with triplets and various fingerings.

Musical notation for the sixth system on page 15, showing a treble and bass staff with a trill and specific fingerings.

*Allegro.*

Handwritten musical score for page 16, featuring six systems of grand staff notation. The music is in 6/8 time and includes various fingerings, trills, and ornaments.

**SONATA V.**

*Adagio.*

*Piano.*

Handwritten musical score for page 17, titled "SONATA V." and "Adagio". It features six systems of grand staff notation with a tempo change to "Piano" and includes fingerings and trills.

*Allegro.*

*Largo.*

Handwritten musical notation for the first system on page 20. The treble clef staff contains a melodic line with a trill (t) and triplet (3) markings. The bass clef staff contains a bass line with a 6/5 interval and other notes. The tempo is marked *Largo.*

Handwritten musical notation for the second system on page 20. The treble clef staff continues the melodic line with a trill (t) and triplet (3) markings. The bass clef staff includes a 6/5 interval and other notes.

*Allegro.*

Handwritten musical notation for the third system on page 20. The treble clef staff contains a melodic line with a trill (t) and a 2/4 time signature. The bass clef staff contains a bass line with a 6/7 interval and other notes. The tempo is marked *Allegro.*

Handwritten musical notation for the fourth system on page 20. The treble clef staff contains a melodic line with a trill (t) and a 6/7 interval. The bass clef staff contains a bass line with a 6/7 interval and other notes.

Handwritten musical notation for the fifth system on page 20. The treble clef staff contains a melodic line with a trill (t) and a 6/5 interval. The bass clef staff contains a bass line with a 6/5 interval and other notes.

Handwritten musical notation for the sixth system on page 20. The treble clef staff contains a melodic line with a trill (t) and a 6/5 interval. The bass clef staff contains a bass line with a 6/5 interval and other notes.

Handwritten musical notation for the first system on page 21. The treble clef staff contains a melodic line with a trill (t) and a 6/5 interval. The bass clef staff contains a bass line with a 6/5 interval and other notes.

Handwritten musical notation for the second system on page 21. The treble clef staff contains a melodic line with a trill (t) and a 6/5 interval. The bass clef staff contains a bass line with a 6/5 interval and other notes.

Handwritten musical notation for the third system on page 21. The treble clef staff contains a melodic line with a trill (t) and a 6/5 interval. The bass clef staff contains a bass line with a 6/5 interval and other notes.

Handwritten musical notation for the fourth system on page 21. The treble clef staff contains a melodic line with a trill (t) and a 6/5 interval. The bass clef staff contains a bass line with a 6/5 interval and other notes.

Handwritten musical notation for the fifth system on page 21. The treble clef staff contains a melodic line with a trill (t) and a 6/5 interval. The bass clef staff contains a bass line with a 6/5 interval and other notes.

Handwritten musical notation for the sixth system on page 21. The treble clef staff contains a melodic line with a trill (t) and a 6/5 interval. The bass clef staff contains a bass line with a 6/5 interval and other notes.

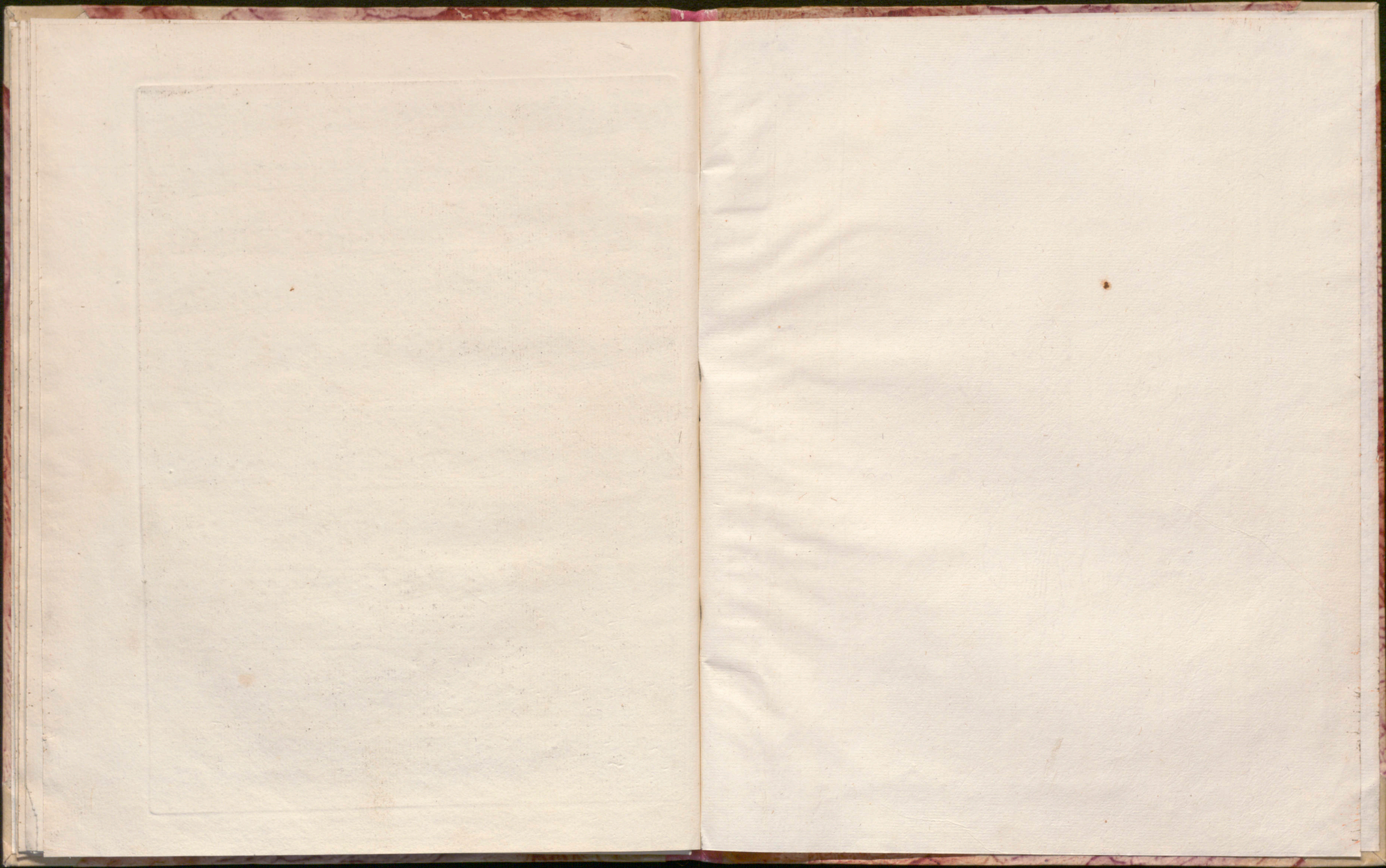


*Grave.*

*Allegro.*

*Fine.*





C:D:G:



41

MARCELLO  
*6. Sonata à Violoncello*  
OPERA PRIMA



QpCARD

QpCARD 201