

# Aria mit verschiedenen Veränderungen

## Goldberg - Variationen

Cello

J. S. Bach - BWV 988

Arranged by Federico Sarudiansky

### Aria



### Variatio 1



Version 1.0. (2010/01/31)

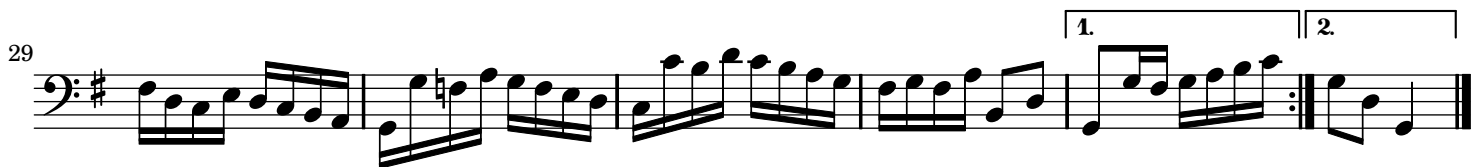
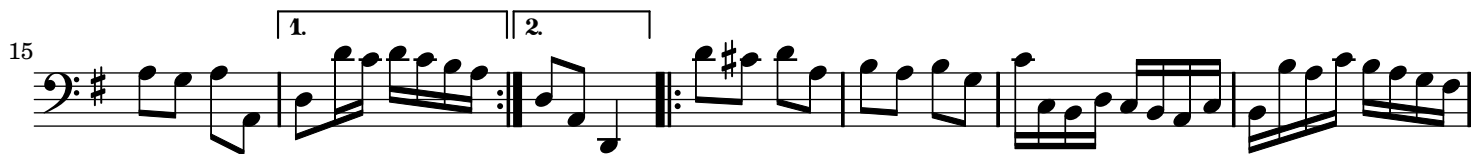
Copyright 2010 © Federico Sarudiansky

Licensed under a Creative Commons Attribution Share-Alike 3.0 licence

(<http://creativecommons.org/licenses/by-sa/3.0>)

Please communicate any performances, rehearsals, comments, suggestions, etc. to **fsarud at yahoo dot com** . If some public performance is going to take place, please send me a copy of a concert program by email or regular mail.

Variatio 2



Variatio 3 - Canone all'Unisono



11

13

15

Variatio 4

13

24

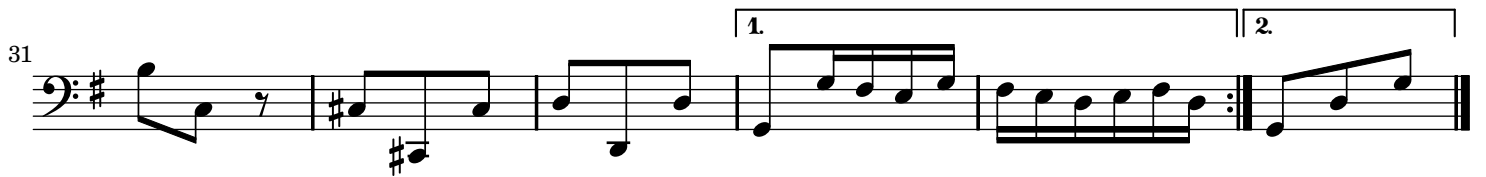
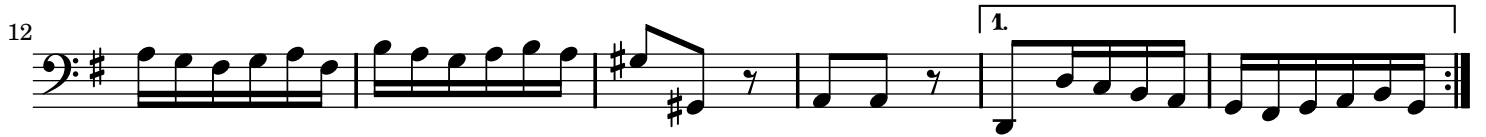
Variatio 5

8

17

25

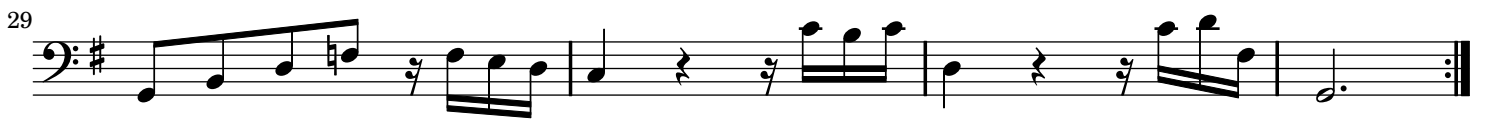
## Variatio 6 - Canone alla Seconda



## Variatio 7 - al tempo di giga - TACET

## Variatio 8





## Variatio 9 - Canone alla Terza



## Variatio 10 - Fughetta



## Variatio 11



## Variatio 12 - Canone alla Quarta



6

11

15

19

23

26

29

Variatio 13

7

14

21

27

Variatio 14

First staff of music for Variatio 14, starting with a treble clef, a key signature of one sharp (F#), and a 3/4 time signature. It features a melodic line with several trills and slurs.

Second staff of music for Variatio 14, starting at measure 8. It continues the melodic line with more trills and slurs.

Third staff of music for Variatio 14, starting at measure 13. It features a more complex rhythmic pattern with many sixteenth notes.

Fourth staff of music for Variatio 14, starting at measure 18. It includes a trill and continues the melodic development.

Fifth staff of music for Variatio 14, starting at measure 24. It features a dense texture of sixteenth notes.

Sixth staff of music for Variatio 14, starting at measure 28. It begins with a double bar line and a fermata, followed by a melodic phrase.

Variatio 15 - Canone alla Quinta - Andante

First staff of music for Variatio 15, starting with a treble clef, a key signature of two flats (Bb, Eb), and a 2/4 time signature. It features a melodic line with a fermata.

Second staff of music for Variatio 15, starting at measure 5. It continues the melodic line with slurs and ties.

Third staff of music for Variatio 15, starting at measure 10. It features a more complex rhythmic pattern with many sixteenth notes.

Fourth staff of music for Variatio 15, starting at measure 15. It includes a double bar line and a fermata, followed by a melodic phrase.

Fifth staff of music for Variatio 15, starting at measure 20. It features a dense texture of sixteenth notes.



24



29



Variatio 16 - Overture



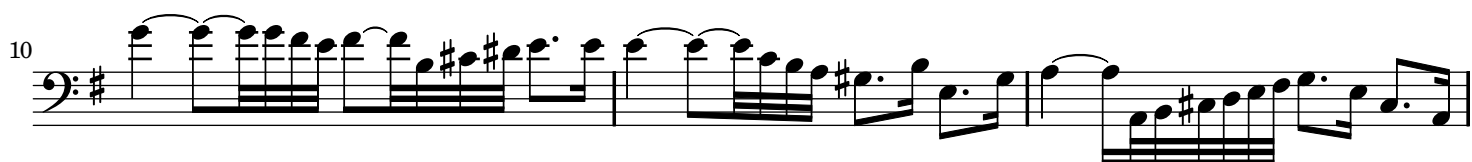
4



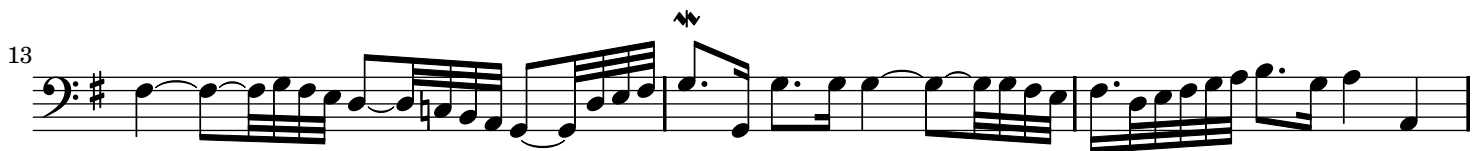
7



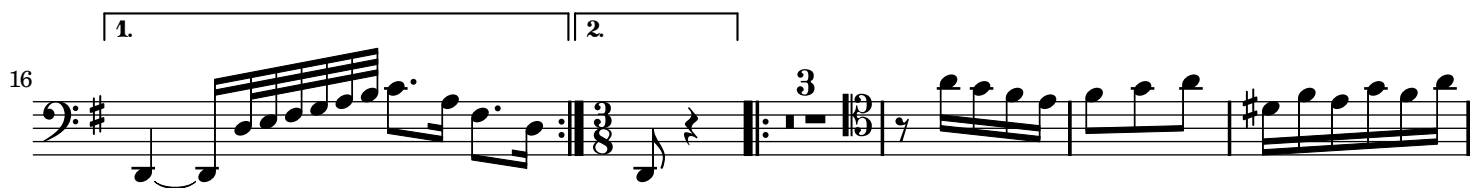
10



13



16



24



31



38



44



## Variatio 17

Musical score for Variatio 17, Cello, 3/4 time signature. The score consists of five staves of music, numbered 1, 7, 15, 18, and 21. The key signature is one sharp (F#). The first staff (1) ends with a measure containing a fermata and the number 4. The second staff (7) ends with a measure containing a fermata and the number 5. The third staff (15) contains a repeat sign. The fourth staff (18) ends with a measure containing a fermata and the number 2. The fifth staff (21) continues the melodic line. The sixth staff (24) ends with a measure containing a fermata and the number 3. The seventh staff (30) ends with a double bar line.

## Variatio 18 - Canone alla Sexta

Musical score for Variatio 18 - Canone alla Sexta, Cello, common time signature. The score consists of five staves of music, numbered 1, 6, 12, 17, and 22. The key signature is one sharp (F#). The first staff (1) begins with a common time signature and ends with a measure containing a fermata and a tilde symbol. The second staff (6) continues the melodic line. The third staff (12) ends with a double bar line. The fourth staff (17) begins with a double bar line and continues the melodic line. The fifth staff (22) continues the melodic line.



## Variatio 19



## Variatio 20



Variatio 21 - Canone alla Settima

Musical score for Variatio 21 - Canone alla Settima, Cello. The score is written in bass clef with a key signature of two flats (B-flat and E-flat) and a common time signature (C). It consists of six staves of music. The first staff begins with a treble clef and a common time signature, then changes to a bass clef. The piece features a variety of rhythmic patterns, including eighth and sixteenth notes, and rests. The key signature changes to one flat (B-flat) at the beginning of the second staff. The score concludes with a double bar line and repeat dots.

Variatio 22 - alla breve

Musical score for Variatio 22 - alla breve, Cello. The score is written in bass clef with a key signature of one sharp (F-sharp) and a 2/4 time signature. It consists of three staves of music. The first staff begins with a treble clef and a common time signature, then changes to a bass clef. The piece features a variety of rhythmic patterns, including eighth and sixteenth notes, and rests. The key signature changes to one flat (B-flat) at the beginning of the second staff. The score concludes with a double bar line and repeat dots.

Variatio 23

Musical score for Variatio 23, Cello. The score is written in bass clef with a key signature of one sharp (F-sharp) and a 3/4 time signature. It consists of two staves of music. The first staff begins with a treble clef and a common time signature, then changes to a bass clef. The piece features a variety of rhythmic patterns, including eighth and sixteenth notes, and rests. The key signature changes to one flat (B-flat) at the beginning of the second staff. The score concludes with a double bar line and repeat dots.

Musical score for Cello, measures 12-30. The score is written in bass clef with a key signature of one sharp (F#) and a common time signature (C). The music consists of six staves of notation. Measure 12 starts with a treble clef and a key signature change to one sharp. The piece features a variety of rhythmic patterns, including eighth and sixteenth notes, and rests. A repeat sign is present at the end of measure 15. Measure 21 contains a whole rest. Measure 26 features a series of chords. The piece concludes with a double bar line and repeat dots at the end of measure 30.

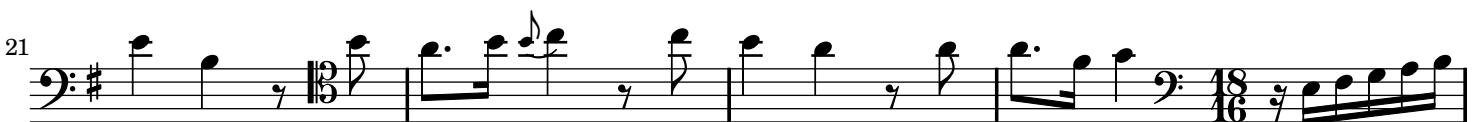
Variatio 24 - Canone all'Ottava

Musical score for Variatio 24 - Canone all'Ottava, measures 1-28. The score is written in bass clef with a key signature of one sharp (F#) and a 9/8 time signature. The music consists of six staves of notation. The piece features a variety of rhythmic patterns, including eighth and sixteenth notes, and rests. A repeat sign is present at the end of measure 15. Measure 23 features a trill. The piece concludes with a double bar line and repeat dots at the end of measure 28.

Variatio 25 - Adagio



Variatio 26



25



27

29

31

Musical notation for measures 25 through 31. The music is in bass clef with a key signature of one sharp (F#). It consists of six staves of music, primarily featuring eighth and sixteenth notes in a rhythmic pattern.

Variatio 27 - Canone alla Nona



Musical notation for measures 32 through 41. The music is in bass clef with a key signature of one sharp (F#) and a 6/8 time signature. It consists of ten staves of music, featuring various rhythmic patterns, including eighth and sixteenth notes, and some rests. There are several trills and slurs throughout the piece.

Variatio 28

*pizz.*

*arco* *pizz.* *arco* *pizz.*

*arco*

*pizz.*

*arco*

*arco*

*arco*

*pizz.* *arco*

Variatio 29

*arco*

*arco*

*arco* 3

*arco* 3 3 3 3 3 3 3 3 3 3



16



22

26

Detailed description: This section contains five staves of music. The first staff (measures 16-21) features a series of triplets and a repeat sign. The second staff (measures 22-25) continues with sixteenth-note patterns and a repeat sign. The third staff (measures 26-28) includes a triplet and a repeat sign.

## Variatio 30 - Quodlibet



5

13

Detailed description: This section contains three staves of music. The first staff (measures 1-4) starts with a common time signature and includes a fermata. The second staff (measures 5-12) features sixteenth-note runs and a repeat sign. The third staff (measures 13-16) continues with sixteenth-note patterns and a repeat sign.

## Aria da capo



10

19

27

Detailed description: This section contains three staves of music. The first staff (measures 1-9) is in 3/4 time and includes a fermata. The second staff (measures 10-18) continues with sixteenth-note patterns and a repeat sign. The third staff (measures 19-26) features sixteenth-note runs and a repeat sign.

Fine