

5. Sonata

7

13

19

25 *p* *f*

31 **Allegro** *p*

36

40

45

49

53

57 **Adagio**

7. Courant



11



21



8. Sarband



9



9. Gigue



11



21



Violoncello

Sonata - Suite à 4

5. Sonata

6

12

18

24 *p* *f*

30 **Allegro**

35 *p*

39

42

46

50

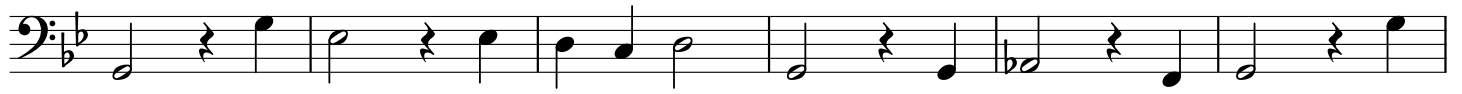
54

57

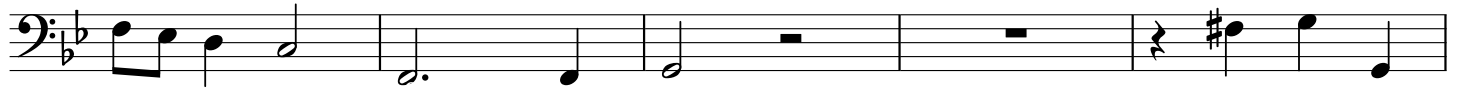
Adagio



61



67



72



77



81



85



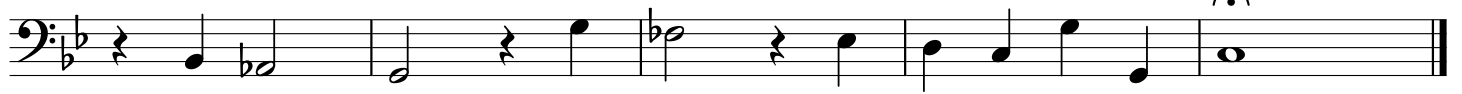
89



92



96



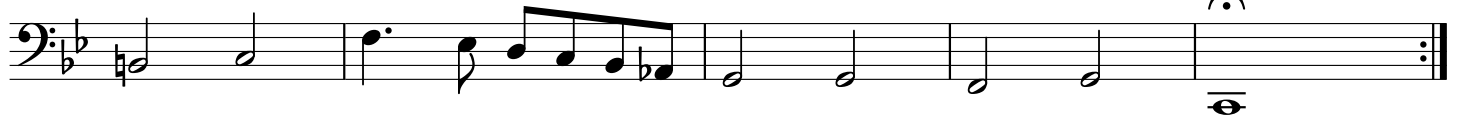
6. Allmand



6



12



7. Courant



10



20



8. Sarband



10



9. Gique



13



25

