

JOHN IRELAND

SEA FEVER

SONG

WITH PIANOFORTE ACCOMPANIMENT

Words by

JOHN MASEFIELD

No. 1, in E minor

2, in F minor

3, in G minor

4, in A minor

Each net 2/-



AUGENER Ltd.
18 GREAT MARLBOROUGH STREET,
& 57 HIGH STREET, MARYLEBONE,
LONDON, W. 1.

SEA FEVER

Words by
John Masfield

Music by
John Ireland



Lento (about ♩ = 52-56)

VOICE



I must go down to the seas a - gain, to the

PIANO



con Fed.



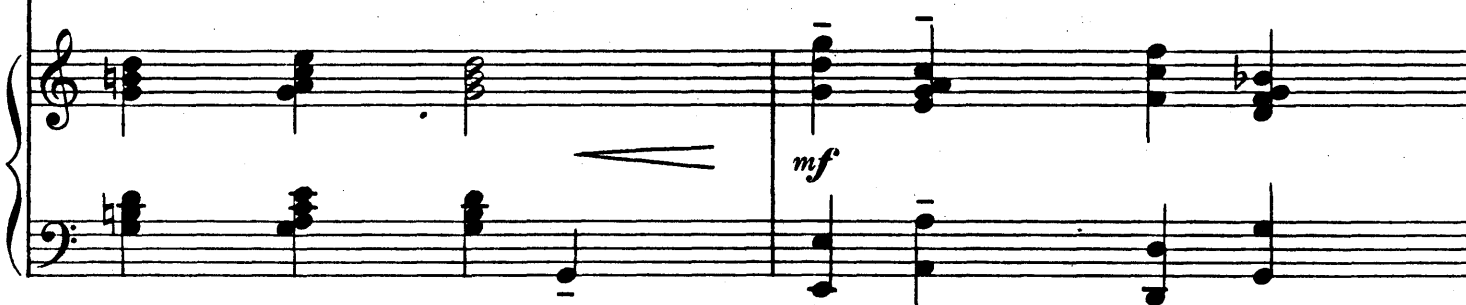
lone - ly sea and the sky, — And all I ask is a tall ship and a



poco cresc.



star to steer her by, And the wheel's kick and the wind's song and the



mf

M
1621
I 65 se. 4

445832

white sail's sha-king, And a grey mist on the sea's face, and a grey dawn break -

p

- ing. I must go down to the seas a-gain, for the call of the run-ning tide Is a

p

12/21/44 C. U. 90

wild call and a clear call, that may not be de-nied;— And

cresc.

all I ask is a wind - y day with the white clouds fly - ing, And the

mf

flung spray and the blown spume, and the sea - gulls cry - - - ing.

p

I must go down to the seas a - gain, to the vag - rant gyp - sy life, To the

pesante e cresc. *simile*

gull's way and the whale's way, where the wind's like a whet-ted knife; And

cresc. molto *ff*

all I ask is a mer-ry yarn from a laugh-ing fel-low-ro-ver, And

mf *dim.*

qui - et sleep and a sweet dream when the long trick's o - - - ver.

p *pp*

SEA FEVER.

I must go down to the seas again, to the lonely
sea and the sky,
And all I ask is a tall ship and a star to steer her
by;
And the wheel's kick and the wind's song and the
white sail's shaking,
And a grey mist on the sea's face, and a grey dawn
breaking.

I must go down to the seas again, for the call of
the running tide
Is a wild call and a clear call that may not be
denied;
And all I ask is a windy day with the white clouds
flying,
And the flung spray and the blown spume, and the
sea-gulls crying.

I must go down to the seas again, to the vagrant
gypsy life,
To the gull's way and the whale's way where the
wind's like a whetted knife;
And all I ask is a merry yarn from a laughing
fellow-rover,
And quiet sleep and a sweet dream when the long
trick's over.

JOHN MASEFIELD.

Date Due

JOHN IRELAND SONGS

SEA FEVER. Poem by John Masfield Net
2/-
No. 1 in E minor. Compass B to D
2 in F minor. Compass C to E flat
3 in G minor. Compass D to F
4 in A minor. Compass E to G
Voice part only with Tonic Sol-fa by
W. G. Glock -2

THE BELLS OF SAN MARIE.
Poem by John Masfield 2/-
No. 1 in G minor. Compass C to D
2 in A minor. Compass D to E
3 in C minor. Compass F to G

MY TRUE LOVE HATH MY HEART.
Poem by Sir Philip Sidney 2/-
No. 1 in E. Compass D to F
2 in G. Compass F to A

THE TRELIS. Poem by Aldous Huxley 2/-
No. 1 in F. Compass A to E
2 in A flat. Compass C to G

VAGABOND. Poem by John Masfield 2/-
No. 1 in F. Compass C to C
2 in G. Compass D to D
3 in A flat. Compass E flat to E flat
4 in B flat. Compass F to F

SANTA CHIARA. Poem by Arthur Symonds 2/-
No. 1 in G minor. Compass C to E flat
2 in A minor. Compass D to F
3 in C minor. Compass F to A flat

THE LAND OF LOST CONTENT.
Album of Six Songs from "A Shropshire
Lad," by A. E. Housman.

Net

High Key; original 4/-
Low Key 4/-

Or separately:

THE LENT LILY 2/-
No. 1 in D min. Compass F to E
2 in E min. Compass G to F sharp

LADSLOVE 2/-
No. 1 in F. Compass D to F
2 in A flat. Compass F to A flat

GOAL AND WICKET 2/-
No. 1 in E. Compass C sharp to E
2 in G. Compass E to G

THE VAIN DESIRE 2/-
No. 1 in F# min. Compass D flat to F
2 in A min. Compass E to A flat

THE ENCOUNTER 2/-
No. 1 in A. Compass E to E
2 in C. Compass G to G

EPILOGUE 1/-
No. 1 in B flat. Compass D to F
2 in D flat. Compass F to A flat

THREE SONGS Complete Net
5/-

Or separately:

LOVE AND FRIENDSHIP. Poem by Emily Brontë
Compass C to G 2/-

FRIENDSHIP IN MISFORTUNE. Words Anon. ...
Compass D flat to F 2/-

THE ONE HOPE. Poem by D. G. Rossetti ...
Compass B flat to F sharp 2/-

AUGENER Ltd.

18 GREAT MARLBOROUGH STREET,
& 57 HIGH STREET, MARYLEBONE,
LONDON, W. 1.