

Concors Discordia

Basse

Serenade IV - A Moll

Benedikt Anton Aufschnaiter

Ouverture

0 Allegro



80 Presto

14



100



109



117



125



136



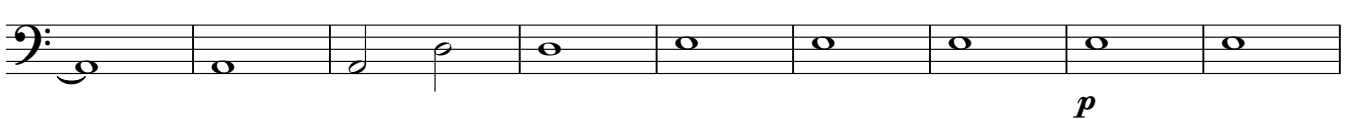
145



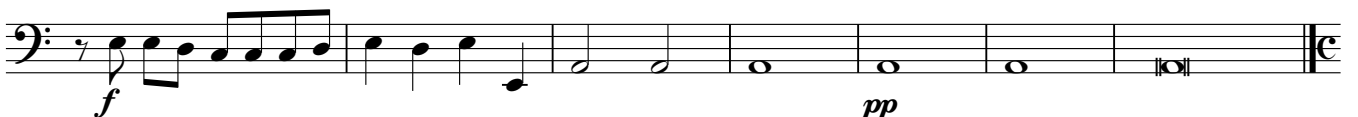
154



163



172



179 Air

Solo Tutti

p *f*

185 Solo

Tutti Solo

p *f* *p*

190 Rondeau

p

198

p

206

p

214

p

220 Bourrée

p

226

p

234

p

240

p

247

p

253 Menuet

Musical notation for the Menuet starting at measure 253. The piece is in 3/4 time and G major. The notation is on a bass clef staff. It begins with a repeat sign. The first measure is a whole rest. The second measure contains a quarter note G2, a quarter note A2, and a quarter note B2. The third measure contains a quarter note C3, a quarter note D3, and a quarter note E3. The fourth measure contains a quarter note F3, a quarter note G3, and a quarter note A3. The fifth measure contains a quarter note B3, a quarter note C4, and a quarter note D4. The sixth measure contains a quarter note E4, a quarter note F4, and a quarter note G4. The seventh measure contains a quarter note A4, a quarter note B4, and a quarter note C5. The eighth measure contains a quarter note D5, a quarter note E5, and a quarter note F5. The ninth measure contains a quarter note G5, a quarter note A5, and a quarter note B5. The tenth measure contains a quarter note C6, a quarter note B5, and a quarter note A5. The eleventh measure contains a quarter note G5, a quarter note F5, and a quarter note E5. The twelfth measure contains a quarter note D5, a quarter note C5, and a quarter note B4. The thirteenth measure contains a quarter note A4, a quarter note G4, and a quarter note F4. The fourteenth measure contains a quarter note E4, a quarter note D4, and a quarter note C4. The fifteenth measure contains a quarter note B3, a quarter note A3, and a quarter note G3. The sixteenth measure contains a quarter note F3, a quarter note E3, and a quarter note D3. The seventeenth measure contains a quarter note C3, a quarter note B2, and a quarter note A2. The eighteenth measure contains a quarter note G2, a quarter note F2, and a quarter note E2. The piece ends with a repeat sign. A dynamic marking *p* is placed below the eighth measure. The word "Solo" is written above the eighth measure.

261 Tutti

Musical notation for the Tutti section starting at measure 261. The notation is on a bass clef staff. It begins with a repeat sign. The first measure contains a quarter note G2, a quarter note A2, and a quarter note B2. The second measure contains a quarter note C3, a quarter note D3, and a quarter note E3. The third measure contains a quarter note F3, a quarter note G3, and a quarter note A3. The fourth measure contains a quarter note B3, a quarter note C4, and a quarter note D4. The fifth measure contains a quarter note E4, a quarter note F4, and a quarter note G4. The sixth measure contains a quarter note A4, a quarter note B4, and a quarter note C5. The seventh measure contains a quarter note D5, a quarter note E5, and a quarter note F5. The eighth measure contains a quarter note G5, a quarter note A5, and a quarter note B5. The ninth measure contains a quarter note C6, a quarter note B5, and a quarter note A5. The tenth measure contains a quarter note G5, a quarter note F5, and a quarter note E5. The eleventh measure contains a quarter note D5, a quarter note C5, and a quarter note B4. The twelfth measure contains a quarter note A4, a quarter note G4, and a quarter note F4. The thirteenth measure contains a quarter note E4, a quarter note D4, and a quarter note C4. The fourteenth measure contains a quarter note B3, a quarter note A3, and a quarter note G3. The fifteenth measure contains a quarter note F3, a quarter note E3, and a quarter note D3. The sixteenth measure contains a quarter note C3, a quarter note B2, and a quarter note A2. The piece ends with a repeat sign. A dynamic marking *f* is placed below the first measure. The word "Solo" is written above the eighth measure.

269 Tutti

Musical notation for the Tutti section starting at measure 269. The notation is on a bass clef staff. It begins with a repeat sign. The first measure contains a quarter note G2, a quarter note A2, and a quarter note B2. The second measure contains a quarter note C3, a quarter note D3, and a quarter note E3. The third measure contains a quarter note F3, a quarter note G3, and a quarter note A3. The fourth measure contains a quarter note B3, a quarter note C4, and a quarter note D4. The fifth measure contains a quarter note E4, a quarter note F4, and a quarter note G4. The sixth measure contains a quarter note A4, a quarter note B4, and a quarter note C5. The seventh measure contains a quarter note D5, a quarter note E5, and a quarter note F5. The eighth measure contains a quarter note G5, a quarter note A5, and a quarter note B5. The ninth measure contains a quarter note C6, a quarter note B5, and a quarter note A5. The tenth measure contains a quarter note G5, a quarter note F5, and a quarter note E5. The eleventh measure contains a quarter note D5, a quarter note C5, and a quarter note B4. The twelfth measure contains a quarter note A4, a quarter note G4, and a quarter note F4. The thirteenth measure contains a quarter note E4, a quarter note D4, and a quarter note C4. The fourteenth measure contains a quarter note B3, a quarter note A3, and a quarter note G3. The fifteenth measure contains a quarter note F3, a quarter note E3, and a quarter note D3. The sixteenth measure contains a quarter note C3, a quarter note B2, and a quarter note A2. The piece ends with a repeat sign. A dynamic marking *f* is placed below the first measure. The word "Solo" is written above the eighth measure.