

Missa in Es

Clarino 2 in Es/E-flat

Ambros Rieder (1771-1855)

I. Tantum ergo

Clarino secondo
in Es/E \flat

2

pf *pf* *pf*

12

pf *pf*

22

rf *f*

II. Kyrie

Clarino secondo
in Es/E \flat

5

rf *rf* *sf* *p* *pf*

12

p *fz* *fz* *fz*

24

rf *f* *p*

34

rf *f* *p* *pf* *p*

41

pf *f* *p* *pp*

III. Gloria

Clarino secondo
in Es/E \flat

Tut[ti]

11

23

45

IV. Graduale

Clarino secondo
in Es/E \flat

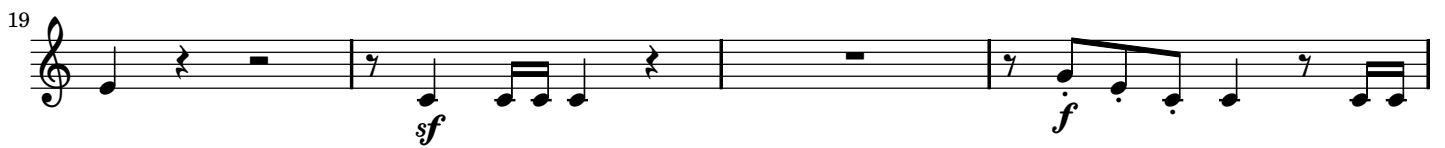
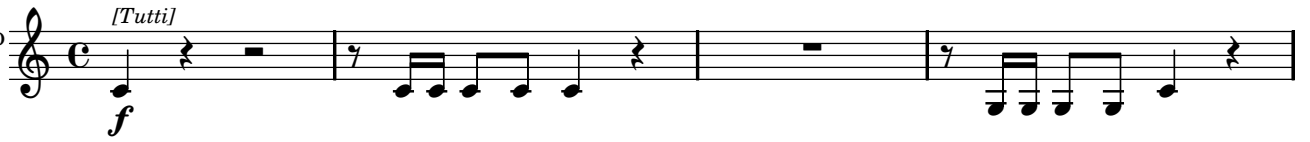
Tut[ti]

4

8

13

V. Credo

Clarino secondo
in Es/E \flat 

VI. Offertorium

Clarino secondo
in Es/E \flat

Solo

5

10

14

19

30

38

44

52

58

65

p

fz

fz

p

fz

mf

f

p

p

p

mf

pf

fz

p

rf

fz

fz

rfz

fz

rfz

p

pf

f

69

74

79

86

93

98

102

VII. Sanctus

Clarino secondo
in Es/E \flat

Tut:[ti]

15

28

38

*) Balkengruppierung wie Erstdruck
beam as in first-print

VIII. Benedictus

Clarino secondo
in Es/E \flat

4 Solo **2** **4**

fz *fz* *fz* *fz*

17 **5** **4**

pf *f*

34 **5** **7**

fz *f* *f*

53 **19** **4**

f

84 **3**

fz *fz* *fz* *rf* *fz*

95 **3**

pf *fz* *fz* *f* *fz* *fz* *fz*

106

fz *fz* *fz*

116 **2**

fz *ff*

IX. Angus Dei

Clarino secondo
in Es

[Tutti]

4 3 4

fz *mf* *f* *rf*

20

6 3 2 4

f *rf* *fz* *p*

44

Dona [nobis pacem]

5 2 *[Tutti]* 8

rfz *[Solo]* *f* *fz* *pf*

68

pf *mf* *rfz* *ff* *p* *p* *ff*

Tantum ergo *da capo*