

Sinfonia ex D

Johann Franz Xaver Sterkel

Allegro assai

Violine 1



6



12



18



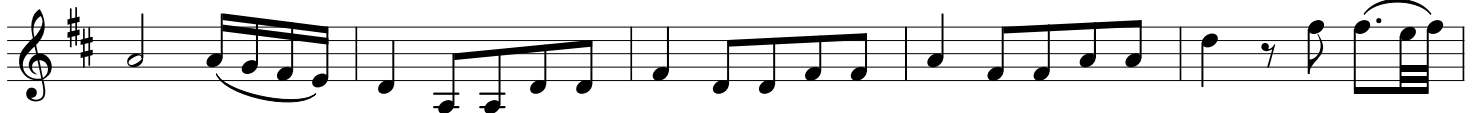
24



30



36



41



48



54



60



139



145

p

151



157



163



169

ff

175



181



187



193



199



209

p

216



222



228

233

240

246

253 *p*

259

266

273

280 *f* *p*

286 *f* *p* *f* *p*

292 *f*

298

304

310

316

Detailed description: This page of a musical score contains 13 staves of music in the key of D major (two sharps). The measures are numbered from 228 to 316. The notation includes various rhythmic patterns such as eighth and sixteenth notes, often beamed together. There are several dynamic markings: *f* (forte) at measures 280, 286, and 292; and *p* (piano) at measures 253, 280, 286, and 292. The score concludes with a double bar line at measure 316.

Andante

7



13



19



25



31



37



43

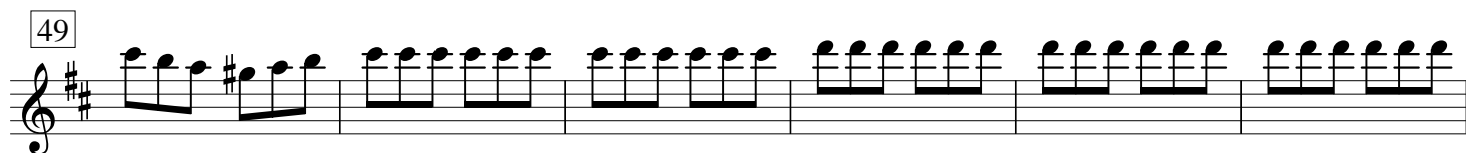
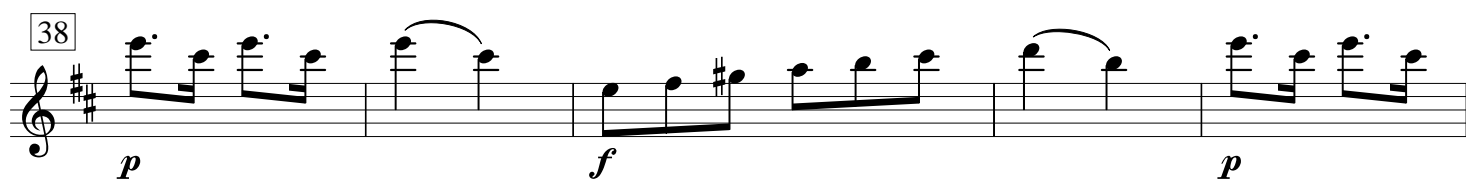
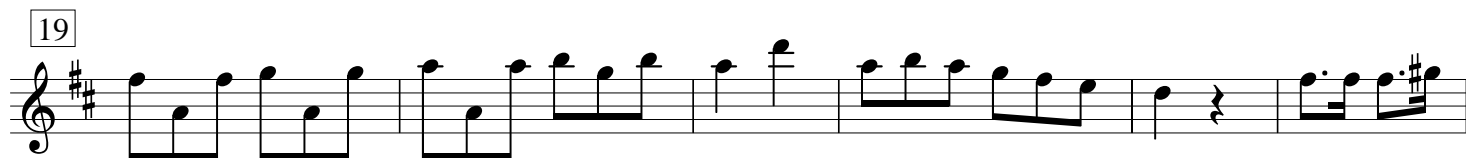


49

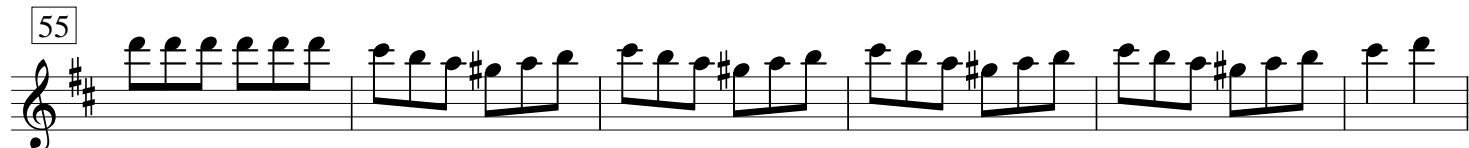


55



Presto

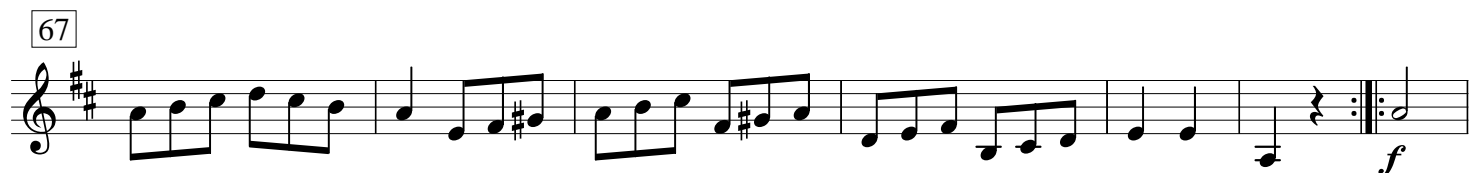
55



61

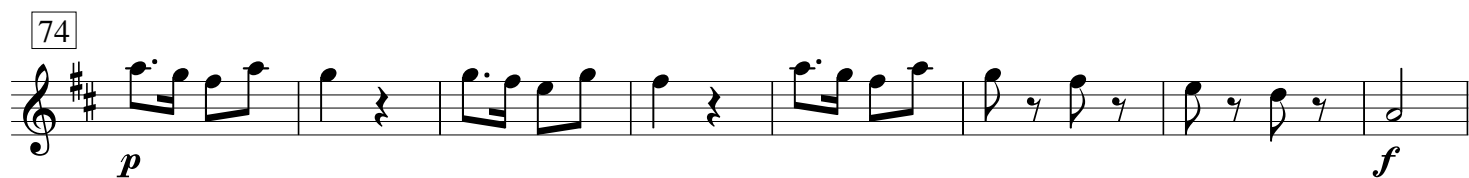


67



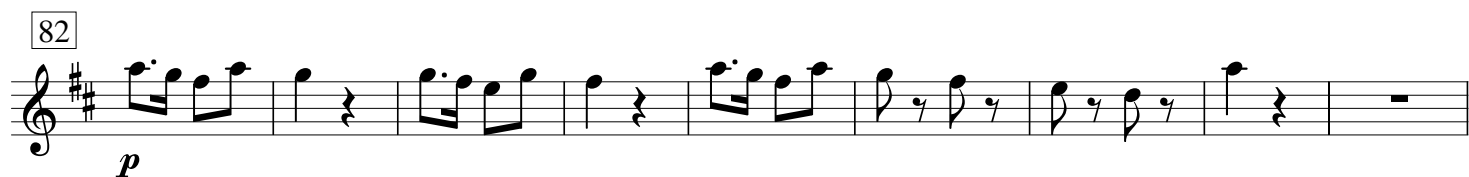
74

p *f*



82

p



91

f



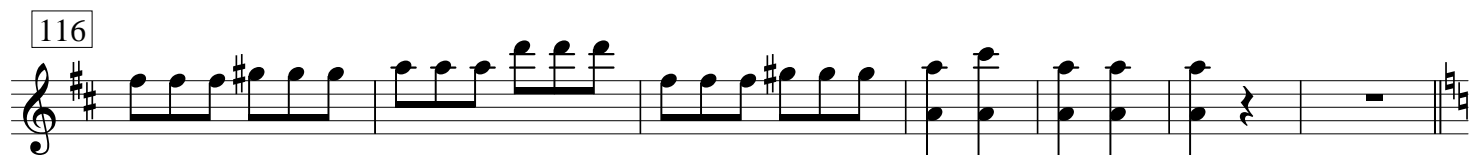
100



108



116



209



215



221



227



234



242



249



255



262



269



276



283

