

Triumphlied

1 *lebhaft, feierlich* Johannes Brahms, opus 55

Musical staff with treble clef, key signature of two sharps (F# and C#), and common time signature (C). The music begins with a series of eighth notes and rests. A dynamic marking *marc.* is present below the staff.

Musical staff with treble clef, key signature of two sharps, and common time signature. The music continues with eighth notes and rests.

Musical staff with treble clef, key signature of two sharps, and common time signature. A dynamic marking *largo* is present below the staff.

Musical staff with treble clef, key signature of two sharps, and common time signature. The music features a series of chords and rests.

Musical staff with treble clef, key signature of two sharps, and common time signature. A circled letter **A** is placed above the staff.

Musical staff with treble clef, key signature of two sharps, and common time signature. A dynamic marking *crese.* is present below the staff.

Musical staff with treble clef, key signature of two sharps, and common time signature. The music continues with eighth notes and rests.

Musical staff with treble clef, key signature of two sharps, and common time signature. The music continues with eighth notes and rests.

Musical staff with treble clef, key signature of two sharps, and common time signature. The music features a triplet of eighth notes.

Musical staff with treble clef, key signature of two sharps, and common time signature. The music ends with a double bar line and the marking *v.s.!*

②

cresc.

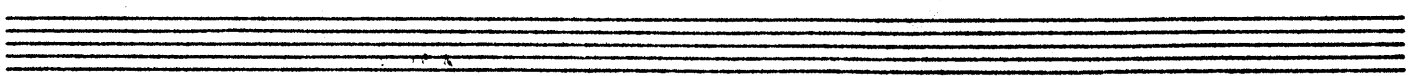
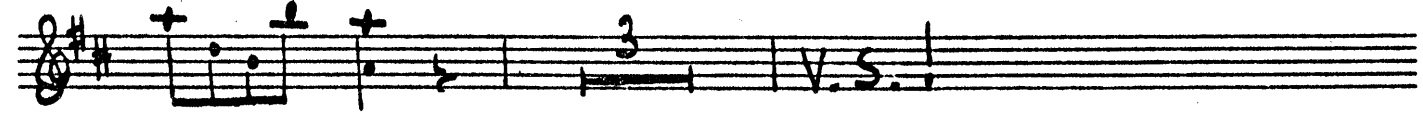
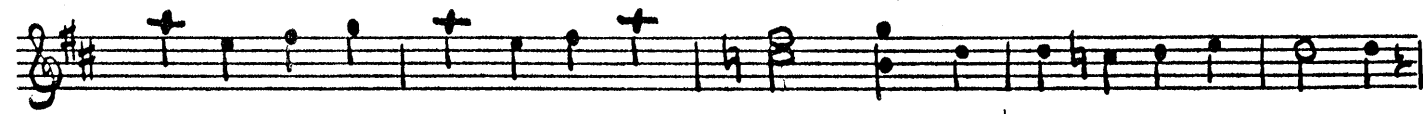
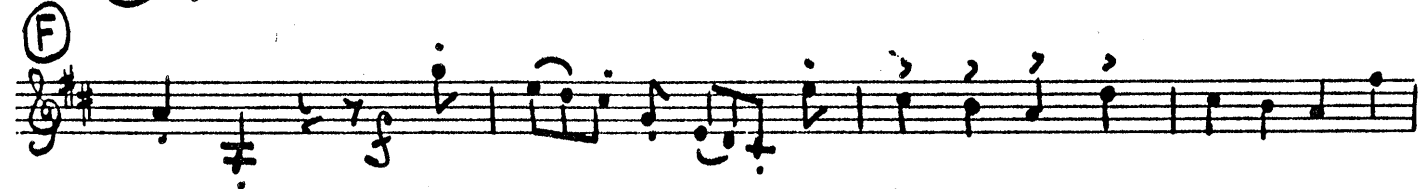
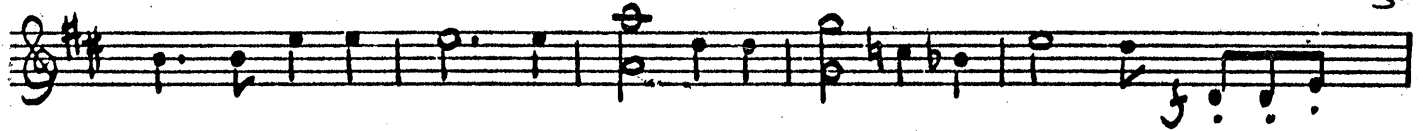
③

④

⑤

V2-11

3



4

U.L.-11

(K)

5

p

cresc. poco a poco

cresc.

ff

(L) *Animato*

ff

Handwritten musical score for a single melodic line in treble clef with a key signature of one sharp (F#). The score consists of 11 staves of music. The first staff begins with a circled 'K' and a '5' in the upper right. The music starts with a piano (*p*) dynamic and includes a 'cresc. poco a poco' instruction. The second staff has a 'cresc.' instruction and an 'ff' dynamic marking. The third staff is marked 'Animato' with a circled 'L' and features sixteenth-note triplets. The fourth staff has an 'ff' dynamic marking. The fifth staff continues the melodic line with various articulations. The sixth staff has a 'ff' dynamic marking. The seventh staff continues the melodic line. The eighth staff continues the melodic line. The ninth staff continues the melodic line. The tenth staff continues the melodic line. The eleventh staff concludes the piece with a final note and a circled 'K'.

Empty musical staves at the bottom of the page.

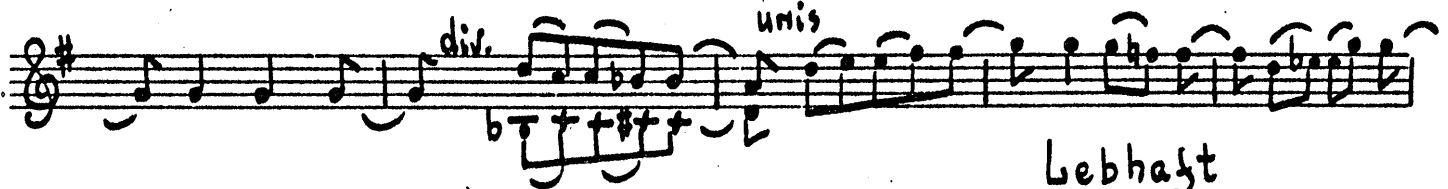
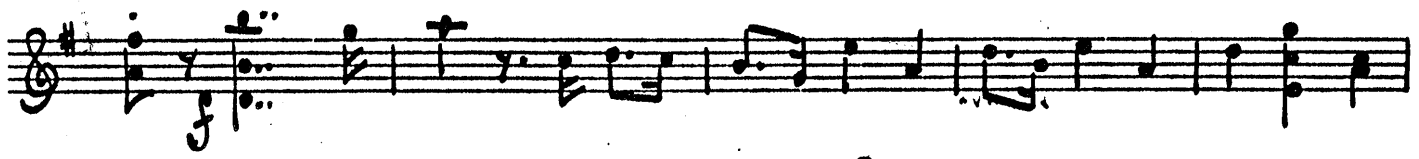
c Mäßig belebt

U2-11 2

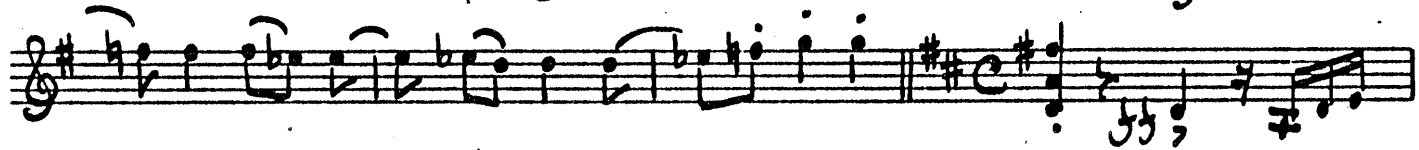
The image shows a handwritten musical score for a piece titled "c Mäßig belebt". The score is written on ten staves of music, all in treble clef and G major (one sharp). The time signature is 3/4. The piece begins with a tempo marking "c" (crescendo) and "Mäßig belebt". The score includes several dynamic markings: *f*, *p*, *mf*, and *dim.*. There are also performance instructions such as "div." (divisi) and "unis" (unison). The score is divided into sections marked with circled letters A, B, C, and D. Section A is marked with a circled 'A' and a fermata. Section B is marked with a circled 'B' and a piano (*p*) marking. Section C is marked with a circled 'C' and a piano (*p*) marking. Section D is marked with a circled 'D'. The score concludes with a final measure marked with a circled '3' and a piano (*p*) marking.

VL-11

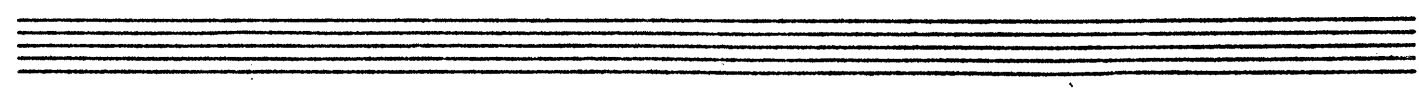
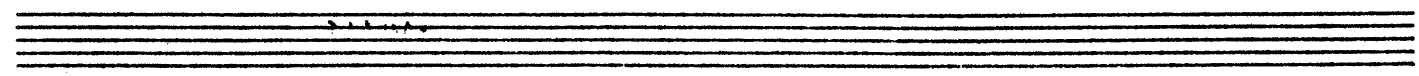
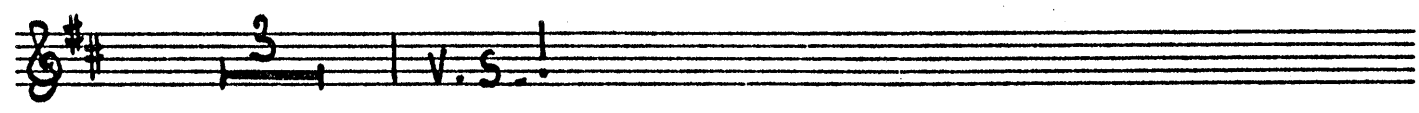
17



Lebhaft



ff



VL-11

Marc.

① *Ziemlich langsam, doch nicht schleppend*

Pizz.

arco

lebhaft

Musical staff with treble clef, key signature of two sharps (F# and C#), and common time signature (C). The staff contains a series of eighth and sixteenth notes.

Musical staff with treble clef, key signature of two sharps, and common time signature. It features a melodic line with eighth notes and a bass line with chords.

Musical staff with treble clef, key signature of two sharps, and common time signature. It includes a melodic line with eighth notes and a bass line with chords and a triplet of eighth notes.

Musical staff with treble clef, key signature of two sharps, and common time signature. It features a melodic line with eighth notes, a bass line with chords, and dynamic markings: *pp*, *pp*, and *p cresc. molto*. A circled letter 'A' is placed above the staff.

un poco animato

Musical staff with treble clef, key signature of two sharps, and common time signature. It contains a series of chords with sharp signs indicating specific notes.

Musical staff with treble clef, key signature of two sharps, and common time signature. It features a melodic line with eighth notes and a bass line with chords.

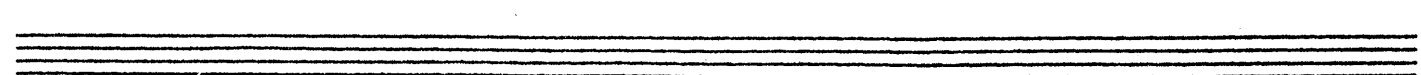
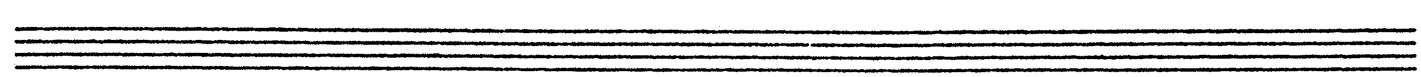
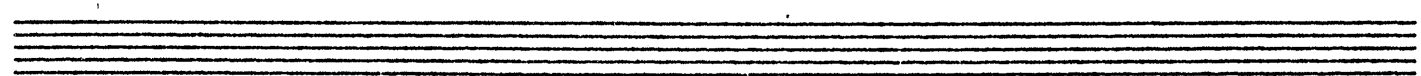
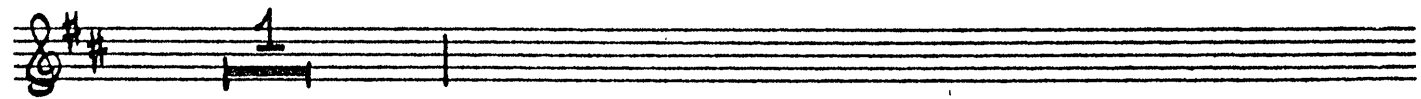
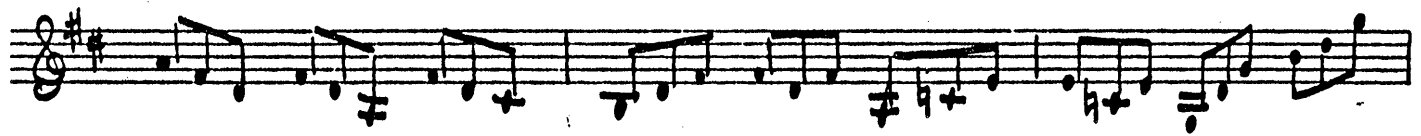
Musical staff with treble clef, key signature of two sharps, and common time signature. It contains a melodic line with eighth notes and a bass line with chords.

Musical staff with treble clef, key signature of two sharps, and common time signature. It features a melodic line with eighth notes and a bass line with chords.

Musical staff with treble clef, key signature of two sharps, and common time signature. It contains a melodic line with eighth notes and a bass line with chords.

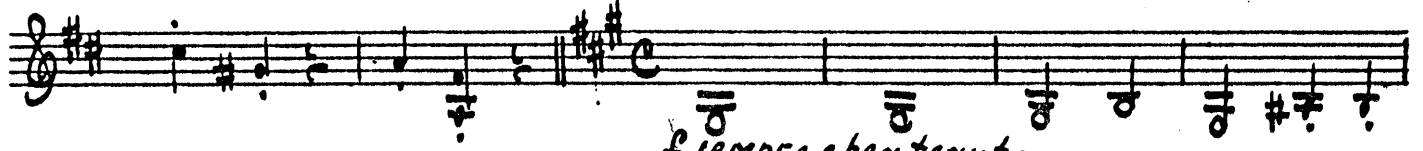
Musical staff with treble clef, key signature of two sharps, and common time signature. It features a melodic line with eighth notes and a bass line with chords.

Musical staff with treble clef, key signature of two sharps, and common time signature. It contains a melodic line with eighth notes and a bass line with chords.

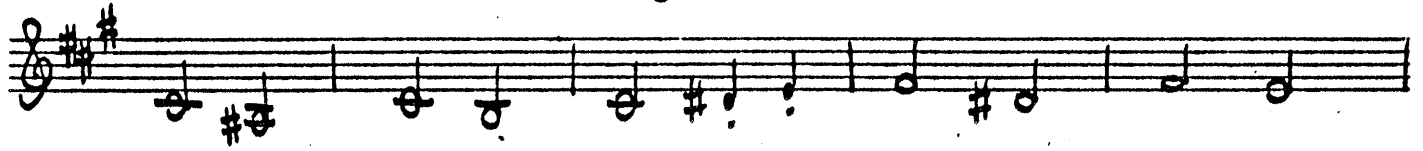




Etwas lebhafter



f sempre e ben tenuto



cresc. sempre



D

p

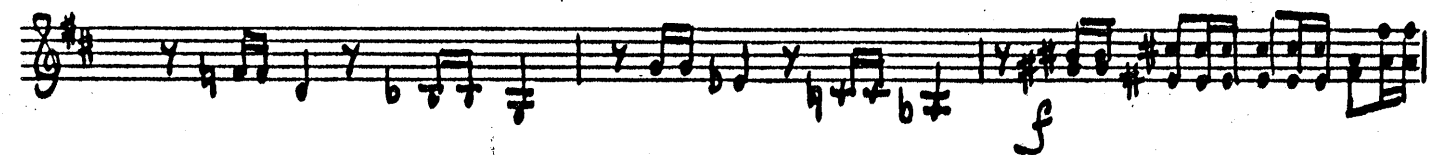
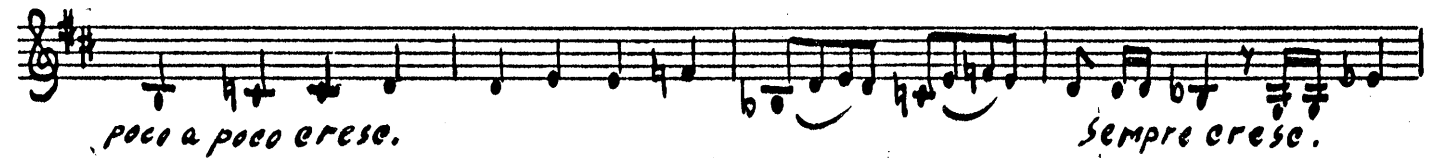
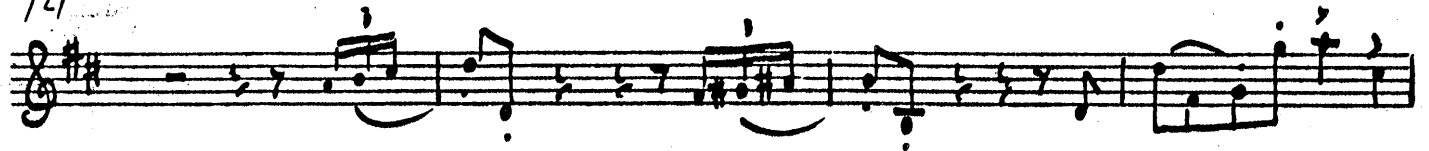


Feierlich



UL-11

v.s.!



②

U2 - II

15

