

Suite af 'Aladdin'

Oboe 2

1. Orientalisk Festmarsch

Nielsen

f

5

f

9 **1**

14 *rall.* *A tempo*

fz

17

f

20

24

27

31 **2** *rall.*

35 *A tempo*

f *f*

40 3 6

mf

Detailed description: Musical staff 40-49. Starts with a treble clef and a 7/8 time signature. The first measure has a 3-measure rest. The music consists of eighth and sixteenth notes with accents. A 6-measure rest is indicated by a horizontal line with the number 6 above it. The dynamic is *mf*.

50 *cresc.* *ff* *dim.* *rall.* *A tempo* *rall.* *cresc.*

3

Detailed description: Musical staff 50-56. Starts with a treble clef and a 7/8 time signature. The first measure has a 3-measure rest. The music consists of eighth and sixteenth notes with accents. A 3-measure rest is indicated by a horizontal line with the number 3 above it. The dynamic is *ff*. The tempo changes from *rall.* to *A tempo* and back to *rall.*. The dynamic is *dim.* and then *cresc.*.

57 4 *A tempo*

ff *f*

Detailed description: Musical staff 57-61. Starts with a treble clef and a 7/8 time signature. The first measure has a 4-measure rest. The music consists of eighth and sixteenth notes with accents. The dynamic is *ff* and then *f*.

62

fp *fz*

Detailed description: Musical staff 62-65. Starts with a treble clef and a 7/8 time signature. The music consists of eighth and sixteenth notes with accents. The dynamic is *fp* and then *fz*.

66

fz fz fz fz fz fz fz fz fz fz

Detailed description: Musical staff 66-70. Starts with a treble clef and a 7/8 time signature. The music consists of eighth notes with accents. The dynamic is *fz* repeated ten times.

71

fff fz fz fz fz fz

Detailed description: Musical staff 71-73. Starts with a treble clef and a 7/8 time signature. The music consists of eighth notes with accents. The dynamic is *fff* and then *fz* repeated five times.

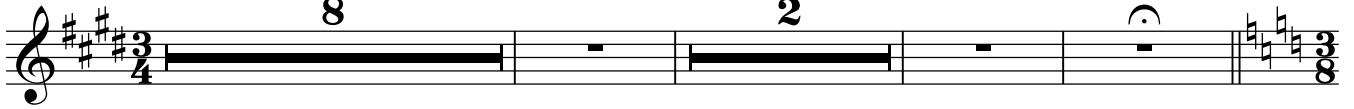
74 *rall.*

fz

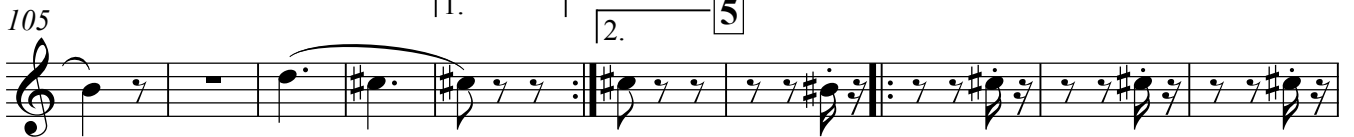
Detailed description: Musical staff 74-77. Starts with a treble clef and a 7/8 time signature. The music consists of eighth notes with accents. The dynamic is *fz*. The tempo is *rall.*. The piece ends with a double bar line and a key signature change to three sharps and a 3/4 time signature.

2. Aladdins Drøm

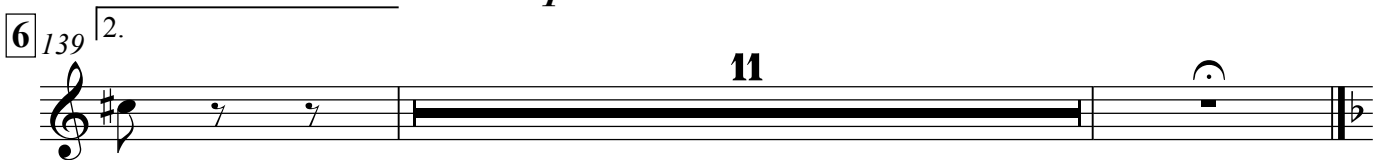
Poco Adagio $\text{♩} = 79$ rall. A tempo rall.



90 Tempo di Valse (Morgentaagernes Tans)

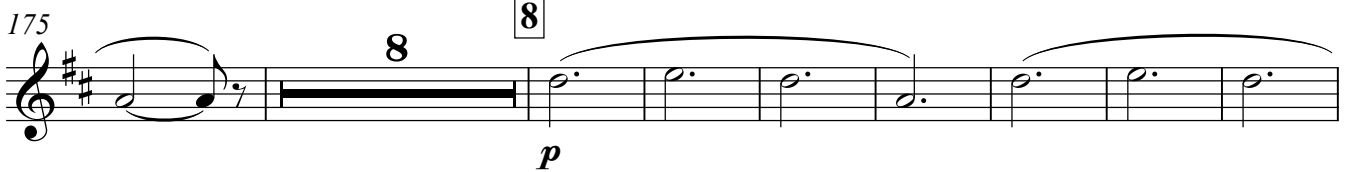
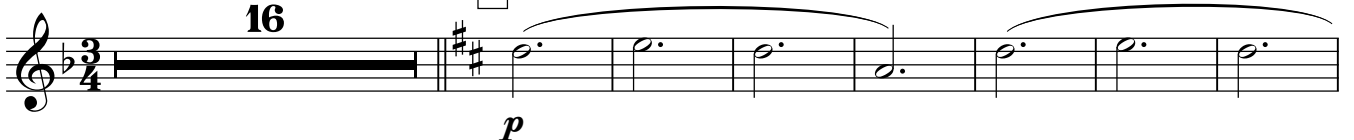


poco rall. (in 3) A tempo

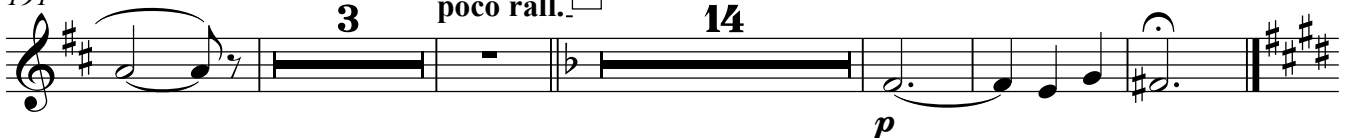


3. Hindu Dans

Andantino con moto 16 Più mosso 7



191 poco rall. 9 A tempo 14



4. Kineserdans

Allegretto un poco rall. **10** A tempo

22 2 6

248

255

264 **11** 25 **12**

297

305

317 A tempo **13** 8 6

336 2

344 6

Moderato non troppo

14

10

fff fz fz fz

15

fz fz fz fz ff

20

15

fz fz fz fz fz

25

fz fz fz dim.

30

16

11

pp pp³ 3 3

45

cresc. 3 3 3 3 cresc. 3 3 3 3 3 poco rall.

48

17 A Tempo

ff mf cresc.

55

18

ff fz fz fz fz

60

fz fz fz fz

64

19

3

72

ff dim.

6 79 20

88

93

7. Negerdans

Allegro **4**

108 21

116 22

124

131

138 23

p

146

f

154 24

f

158 **Meno mosso**

10

8 168 **25**

pp *pp* *f*

178 **2.**

pp

187

195 *accel.*

cresc. *ff*

203 **26** Più mosso

ff

210

217 **27** A tempo

ff

225



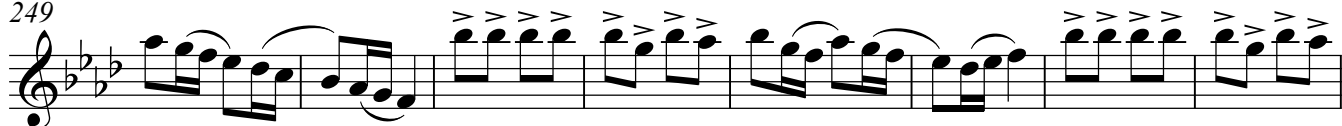
233



241



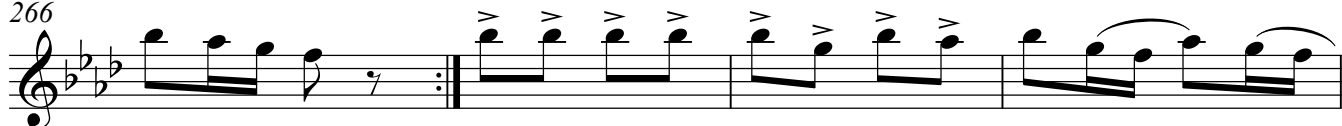
249



257



266



270



275

p

283 29

p *cresc.*

291

f

299

307 Più mosso

fff

315

323

328

sfz