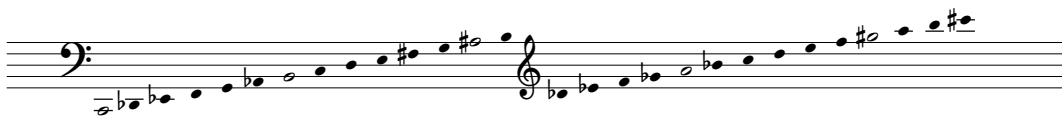


# L'erbario di Emily Dickinson

per organo

Carlotta Ferrari 2020

1. *Lonicera parviflora*
2. *Orchis ciliaris*
3. *Cistus canadensis*
4. *Hepatica triloba*
5. *Saxifraga sarmentosa*
6. *Rosa rubiginosa*
7. *Plantago lanceolata*
8. *Viola tricolor*
9. *Calendula officinalis*
10. *Fuchsia magellanica*



Trasposizioni RPS della scala minore napoletana

## 1. *Lonicera parviflora*

leggiero

## 2. *Orchis ciliaris*

maestoso

*3. Cistus canadensis*

allegro

*4. Hepatica triloba*

misterioso

5. *Saxifraga sarmentosa*

6. *Rosa rubiginosa*

7. *Plantago lanceolata*

System 1: Treble clef with a 7-measure rest, followed by a melodic line in the right hand. Bass clef with a whole note chord (F#2, A2) and a whole note chord (G2, B1). A second bass clef line is empty.

System 2: Treble clef with a 7-measure rest, followed by a melodic line. Bass clef with a whole note chord (F#2, A2) and a whole note chord (G2, B1). A second bass clef line is empty.

System 3: Treble clef with a 7-measure rest, followed by a melodic line. Bass clef with a whole note chord (F#2, A2) and a whole note chord (G2, B1). A second bass clef line is empty. A bracket spans the first four measures of the bass clef. The system ends with a 3/4 time signature change and the text "8. Viola tricolor", "b.e.", "p.", and "timido".

System 4: Bass clef with a melodic line. Treble clef with a whole note chord (F#2, A2) and a whole note chord (G2, B1). A second treble clef line is empty.

System 5: Treble clef with a melodic line. Bass clef with a melodic line. A second bass clef line is empty.

System 6: Treble clef with a melodic line. Bass clef with a melodic line. A second bass clef line is empty. The system ends with a 2/4 time signature change.

9. *Calendula officinalis*

*vivace*

10. *Fuchsia magellanica*

*dolce*