

Vienna Horn

Symphony n°10 in F# Major "The Giant" Op.50

III. Serenade-Fantasia

FELIPE B. BRANDES

Largo (alla G. Mahler) ♩ = 40

ff

6

11

17

4

35

4

39

4

47

4

56

4

62

11

Tempo 1 ♩ = 40

♩ = 60

Largo ♩ = 40

86

7

9

3/4

Symphony n°10 in F# Major "The Giant" Op.50

rit.

Largo (alla G. Mahler) ♩ = 40

105

ff

Largo ♩ = 40

115

129

♩ = 30
cantabile

ff

148

a tempo

154

rit. **Largo** ♩ = 40

158

181

V-horn/piano solo

fff *rit.* *rit.* ***ff*** ***ff***

Largo ♩ = 40

185

198

207 **3** **2**

216

221

225

227

229 **5**

236 **4**

243 $\text{♩} = 80$ $\text{♩} = 40$ **9** $\text{♩} = 60$ *accel.* $\text{♩} = 80$ *rit.*

ffff *mf*

256 $\text{♩} = 30$ *cantabile* **3** *a tempo*

ff

264 *rit.*

268 ♩ = 100

280 *rit.*

284

298 *a tempo* **Largo** ♩ = 40

304

317 *accel.* ♩ = 60 ♩ = 80 ♩ = 100 ♩ = 120 ♩ = 160 **f**

323 **Prestissimo** ♩ = 220 **ff**

331 *rit.* ♩ = 80 **fff**

Symphony n°10 in F# Major "The Giant" Op.50

IV. The Giant Apotheosis

FELIPE B. BRANDES

Largo ♩ = 40

6

11

15

19

27

32

38

41

rit. *a tempo*

ff *fff* *ff*

fff *ff* *f*

mf

ff

47 **4**

54 **4**

62 *mf* *mf*

67 **2** **3**

76 **3** **2**

85

90

94

97

100 4

107

111 *a tempo*

122

127 *in modo di marcia* ♩ = 30

132 ♩ = 40

136

140

146

151

155

159

162

166

$\text{♩} = 60$
in modo dodecafonico

176

$\text{♩} = 40$

183

$\text{♩} = 80$ $\text{♩} = 40$ $\text{♩} = 80$

ff

190

195

accel. *accel.* *a tempo* $\text{♩} = 40$

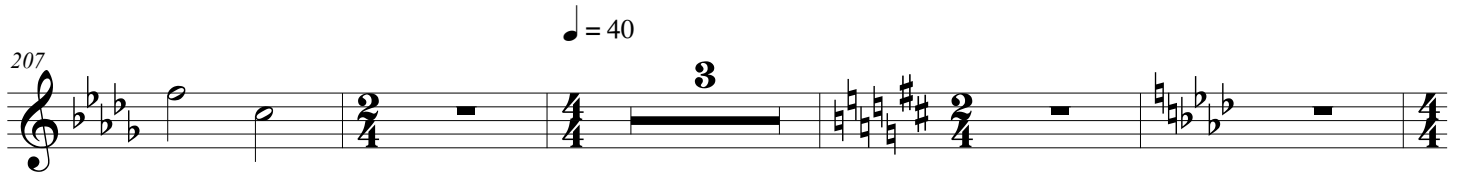
♩ = 80

201

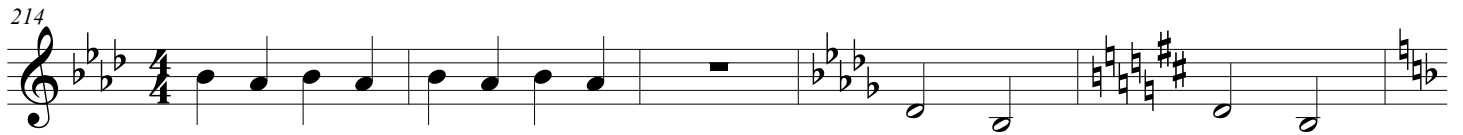


♩ = 40

207



214

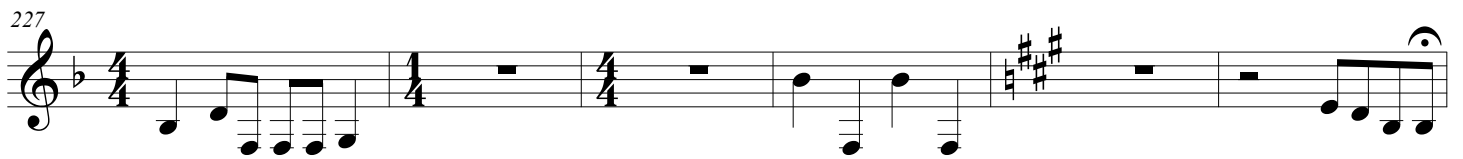


♩ = 80

219

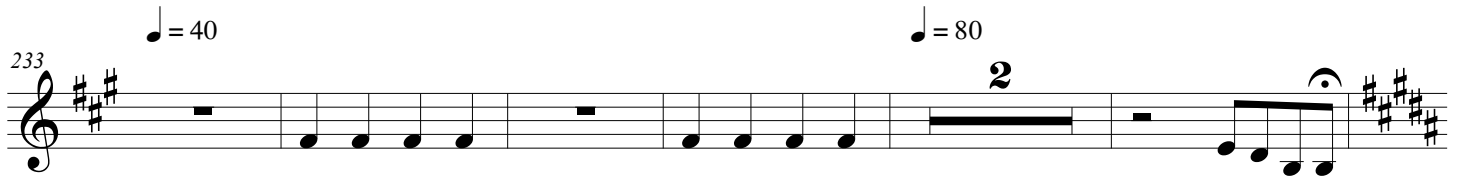


227



♩ = 40

233



240

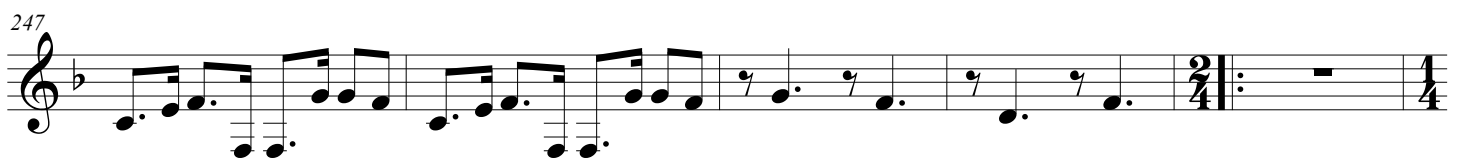
f



244



247



6 Symphony n°10 in F# Major "The Giant" Op.50

♩ = 40 ♩ = 80

252

257

♩ = 160 ♩ = 80

2

263

267

271

rit. 40

7

282

♩ = 80 ♩ = 60 ♩ = 40

16

4

ffff

304

307

311

18

mf

Symphony n°10 in F# Major "The Giant" Op.50

332 $\text{♩} = 80$ $\text{♩} = 40$

ff

336 $\text{♩} = 60$

rit.

341 $\text{♩} = 40$ $\text{♩} = 120$

fff *ffff*

Wagner Tuba

Symphony n°10 in F# Major "The Giant" Op.50

III. Serenade-Fantasia

FELIPE B. BRANDES

Largo (alla G. Mahler) ♩ = 40

ff

13 **17** **4**

37 **4**

45 **6**

56

62 **11** **Tempo 1** ♩ = 40

♩ = 60 **Largo** ♩ = 40

86 **7** **9** **3/4**

105 **5** *rit.* **Largo (alla G. Mahler)** ♩ = 40 **2**

ff

2 Symphony n°10 in F# Major "The Giant" Op.50

Largo ♩ = 40

115 **9** **3**

129 **2** **2** **10** **3** *cantabile* ♩ = 30 **ff**

148 **3** *a tempo*

155 **2** **19** *Largo* ♩ = 40

180 *W-tuba/piano solo* **fff** *rit.* **f** *rit.* **ff** **ff**

185 **Largo** ♩ = 40 **6** **4**

198 **5**

207 **3** **2**

216

221



225



227



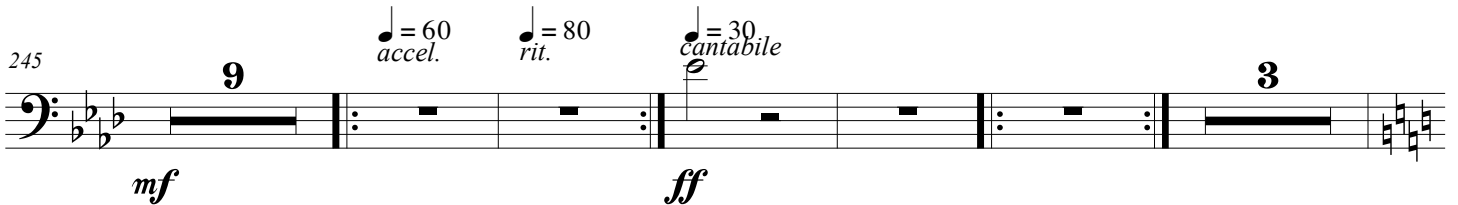
229



237



245



262



279



283



Symphony n°10 in F# Major "The Giant" Op.50

295 *a tempo*

3

2

302 **Largo** ♩ = 40

♩ = 40

309 *accel.*

8

♩ = 60

♩ = 80

♩ = 100

321 **Prestissimo** ♩ = 220

♩ = 120

♩ = 160

f

ff

2

327 *rit.*

2

2

♩ = 80

ffff

Symphony n°10 in F# Major "The Giant" Op.50

IV. The Giant Apotheosis

FELIPE B. BRANDES

Largo ♩ = 40

6

11 *rit.*

17 *a tempo*

fff ff fff ff

25 *f*

33 *mf ff*

40 *ff*

47

54

62

mf *mf*

67

75

82

88

93

97

101

109

116 *a tempo*

5 4

129 **in modo di marcia** ♩ = 30 ♩ = 40

134

138

143

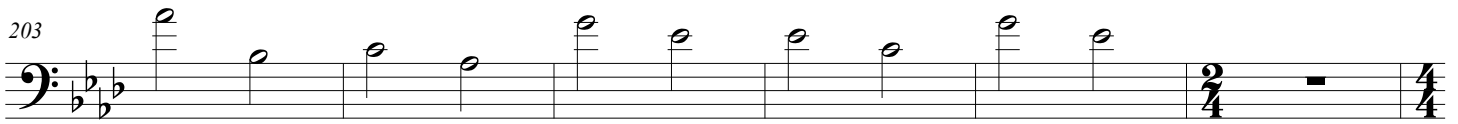
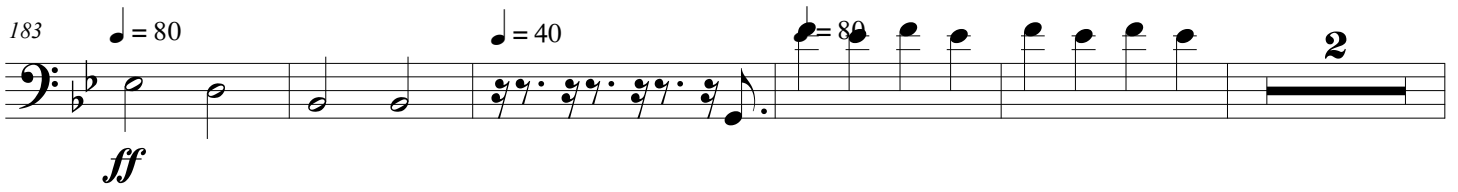
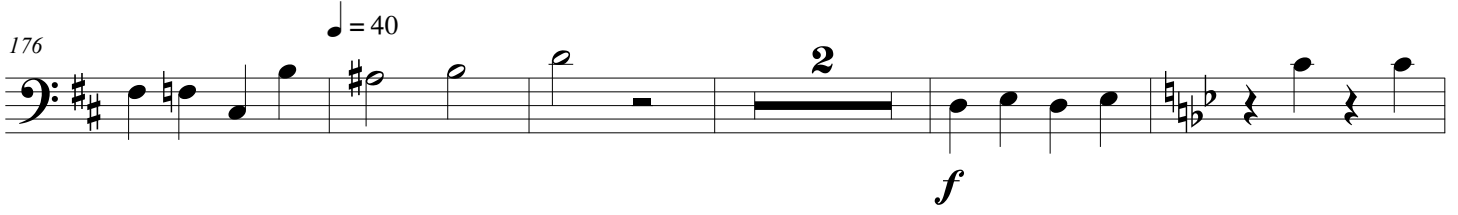
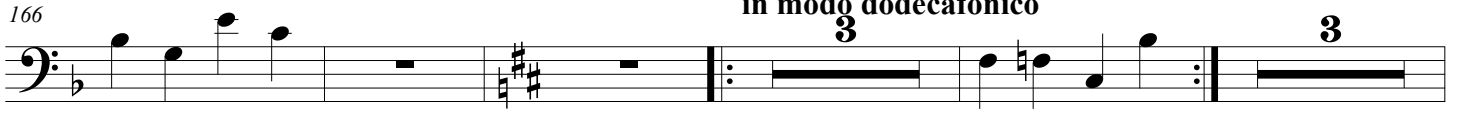
149

154

158

162

$\text{♩} = 60$
in mod^o dodecafonico
3



♩ = 40

230

♩ = 80

237

242

245

♩ = 40 ♩ = 80

251

257

264

268

271

282 $\text{♩} = 80$ $\text{♩} = 60$ $\text{♩} = 40$

2/4 4/4 16 4 *fff*

Detailed description: This staff contains measures 282 to 303. It begins with a 2/4 time signature and a whole rest. At measure 284, the time signature changes to 4/4. A fermata labeled '16' spans measures 284-299. At measure 300, the time signature changes to 4/4 and a fermata labeled '4' spans measures 300-303. The music is in F# major and features complex rhythmic patterns and chords. The dynamic marking *fff* is present at the end of the staff.

304

Detailed description: This staff contains measures 304 to 306. It features a melodic line in the bass clef with eighth and sixteenth notes, and a complex chordal accompaniment in the right hand.

307

Detailed description: This staff contains measures 307 to 310. It features a dense texture with sixteenth-note runs in the bass clef and a melodic line in the right hand.

311 18 *mf*

Detailed description: This staff contains measures 311 to 331. It features a melodic line in the bass clef and a complex chordal accompaniment. A fermata labeled '18' spans measures 311-331. The dynamic marking *mf* is present.

332 $\text{♩} = 80$ $\text{♩} = 40$ *ff*

Detailed description: This staff contains measures 332 to 335. It features a melodic line in the bass clef with triplets and a complex chordal accompaniment. The dynamic marking *ff* is present.

336 $\text{♩} = 60$ 5 $\text{♩} = 40$ *fff* *rit.* $\text{♩} = 120$ *fff*

Detailed description: This staff contains measures 336 to 341. It features a melodic line in the bass clef with a fermata labeled '5' over measures 336-340. The dynamic marking *fff* is present. A *rit.* marking is present over measures 340-341. The tempo marking $\text{♩} = 120$ is present at the end of the staff.