

Handwritten musical notation on three staves. The top staff begins with a treble clef and a key signature of one sharp (F#). The middle and bottom staves use different clefs, likely alto and bass clefs. The notation includes various note values, rests, and dynamic markings.

Handwritten musical notation on three staves, concluding with a 'Fine' marking. The notation includes various note values and rests. The word 'Fine' is written in a cursive hand across the middle staff.

*Sonata No. 1 a 2. Javier et Pedal di J. S. Bach*

Handwritten musical notation for the beginning of a piece. The tempo marking 'Allegro' is written in the first staff. The notation includes various note values, rests, and clefs. The piece is in 3/4 time.

62.

5

Handwritten musical notation for measures 5-8. The system consists of three staves. The top staff is in treble clef, the middle in alto clef, and the bottom in bass clef. The music features complex rhythmic patterns with many beamed notes and rests.

9

Handwritten musical notation for measures 9-12. The system consists of three staves. The top staff is in treble clef, the middle in alto clef, and the bottom in bass clef. The music continues with complex rhythmic patterns, including a 'g' marking under the first measure of the top staff.

13

Handwritten musical notation for measures 13-16. The system consists of three staves. The top staff is in treble clef, the middle in alto clef, and the bottom in bass clef. The music continues with complex rhythmic patterns, including a 'g' marking under the first measure of the top staff.

17

Handwritten musical notation for measures 17-20. The system consists of three staves. The top staff is in treble clef, the middle in alto clef, and the bottom in bass clef. The music continues with complex rhythmic patterns, including a 'g' marking under the first measure of the top staff.

22

Handwritten musical notation for measures 22-25. The system consists of three staves. The top staff is in treble clef with a key signature of one flat (B-flat) and a common time signature (C). It contains a melodic line with eighth and sixteenth notes, including a sixteenth-note triplet. The middle staff is in alto clef and contains a similar melodic line. The bottom staff is in bass clef and contains a bass line with quarter and eighth notes.

26a

Handwritten musical notation for measures 26-29. The system consists of three staves. The top staff is in treble clef with a key signature of one flat and a common time signature. It features a melodic line with eighth and sixteenth notes. The middle staff is in alto clef and contains a melodic line with eighth notes. The bottom staff is in bass clef and contains a bass line with quarter notes.

30a

Handwritten musical notation for measures 30-33. The system consists of three staves. The top staff is in treble clef with a key signature of one flat and a common time signature. It contains a melodic line with eighth and sixteenth notes. The middle staff is in alto clef and contains a melodic line with eighth notes. The bottom staff is in bass clef and contains a bass line with quarter notes.

34

Handwritten musical notation for measures 34-37. The system consists of three staves. The top staff is in treble clef with a key signature of one flat and a common time signature. It contains a melodic line with eighth and sixteenth notes, including a sixteenth-note triplet. The middle staff is in alto clef and contains a melodic line with eighth notes. The bottom staff is in bass clef and contains a bass line with quarter notes.

38

Handwritten musical notation for measures 38-41. The system consists of three staves. The top staff is in treble clef, the middle in treble clef, and the bottom in bass clef. The music features a complex melodic line in the upper staves and a more rhythmic bass line.

42a

Handwritten musical notation for measures 42-46. The system consists of three staves. The top staff is in treble clef, the middle in treble clef, and the bottom in bass clef. The music continues with intricate melodic patterns and rhythmic accompaniment.

47

Handwritten musical notation for measures 47-50. The system consists of three staves. The top staff is in treble clef, the middle in treble clef, and the bottom in bass clef. The notation shows a continuation of the musical themes established in the previous measures.

51

Handwritten musical notation for measures 51-54. The system consists of three staves. The top staff is in treble clef, the middle in treble clef, and the bottom in bass clef. The music concludes with a series of rhythmic patterns in the bass line.

54a

Handwritten musical notation for system 54a, consisting of three staves. The top two staves use treble clefs, and the bottom staff uses a bass clef. The notation includes various note values, rests, and dynamic markings.

58a

Handwritten musical notation for system 58a, consisting of three staves. The top staff uses a treble clef, the middle staff uses an alto clef, and the bottom staff uses a bass clef. The notation includes various note values, rests, and dynamic markings.

62a

Handwritten musical notation for system 62a, consisting of three staves. The top staff uses a treble clef, the middle staff uses an alto clef, and the bottom staff uses a bass clef. The notation includes various note values, rests, and dynamic markings.

66

Handwritten musical notation for system 66, consisting of three staves. The top two staves use treble clefs, and the bottom staff uses a bass clef. The notation includes various note values, rests, and dynamic markings.

70

Handwritten musical notation for measures 70-73. The system consists of three staves: a treble clef staff, a piano staff with a grand staff (treble and bass clefs), and a bass clef staff. The music is written in a historical style with various note values and rests.

74a

Handwritten musical notation for measures 74-77. The system consists of three staves: a treble clef staff, a piano staff with a grand staff, and a bass clef staff. The notation includes complex rhythmic patterns and articulation marks.

78a

Handwritten musical notation for measures 78-82. The system consists of three staves: a treble clef staff, a piano staff with a grand staff, and a bass clef staff. The music features dense melodic lines and rests.

83

Handwritten musical notation for measures 83-86. The system consists of three staves: a treble clef staff, a piano staff with a grand staff, and a bass clef staff. The notation shows a continuation of the musical piece with various note values.

87

Handwritten musical notation for measures 87-90. The system consists of three staves. The top staff is in treble clef, the middle in alto clef, and the bottom in bass clef. The music features complex rhythmic patterns with many sixteenth and thirty-second notes.

91

Handwritten musical notation for measures 91-94. The system consists of three staves. The top staff is in treble clef, the middle in alto clef, and the bottom in bass clef. The music continues with complex rhythmic patterns.

95

Handwritten musical notation for measures 95-98. The system consists of three staves. The top staff is in treble clef, the middle in alto clef, and the bottom in bass clef. The music continues with complex rhythmic patterns.

98a

Handwritten musical notation for measures 98a-101. The system consists of three staves. The top staff is in treble clef, the middle in alto clef, and the bottom in bass clef. The music continues with complex rhythmic patterns.

6B.

102

Handwritten musical notation for measures 102-104. The first system consists of three staves. The top staff is in treble clef and contains a melodic line with many sixteenth notes. The middle and bottom staves are in bass clef and provide harmonic accompaniment. The notation is dense and characteristic of 18th-century manuscript style.

Handwritten musical notation for measures 105-107. The first system consists of three staves. The top staff is in treble clef and features a melodic line with a *Largo* tempo marking. The middle and bottom staves are in bass clef. The notation is dense and characteristic of 18th-century manuscript style.

Handwritten musical notation for measures 108-110. The first system consists of three staves. The top staff is in treble clef and contains a melodic line with many sixteenth notes. The middle and bottom staves are in bass clef. The notation is dense and characteristic of 18th-century manuscript style.

Handwritten musical notation for measures 111-113. The first system consists of three staves. The top staff is in treble clef and contains a melodic line with many sixteenth notes. The middle and bottom staves are in bass clef. The notation is dense and characteristic of 18th-century manuscript style.

6a



9



11a



14



16a



19

Handwritten musical notation for measures 19-20. The system consists of three staves. The top staff is in treble clef and contains a complex melodic line with many sixteenth notes. The middle staff is also in treble clef and contains a similar melodic line. The bottom staff is in bass clef and contains a simpler bass line with quarter and eighth notes.

21a

Handwritten musical notation for measures 21-23. The system consists of three staves. The top staff is in treble clef and features a very dense melodic texture with many sixteenth notes. The middle staff is in treble clef and contains a similar dense melodic line. The bottom staff is in bass clef and contains a bass line with quarter and eighth notes.

24

Handwritten musical notation for measures 24-25. The system consists of three staves. The top staff is in treble clef and contains a melodic line with eighth and sixteenth notes. The middle staff is in treble clef and contains a similar melodic line. The bottom staff is in bass clef and contains a bass line with quarter and eighth notes.

26a

Handwritten musical notation for measures 26-27. The system consists of three staves. The top staff is in treble clef and contains a melodic line with eighth and sixteenth notes. The middle staff is in treble clef and contains a similar melodic line. The bottom staff is in bass clef and contains a bass line with quarter and eighth notes.

29

Handwritten musical notation for measures 29-30. The system consists of three staves. The top staff is in treble clef and contains a complex melodic line with many sixteenth notes. The middle staff is in alto clef and contains a similar complex melodic line. The bottom staff is in bass clef and contains a simpler bass line with quarter and eighth notes.

31

Handwritten musical notation for measures 31-32. The system consists of three staves. The top staff is in treble clef and contains a complex melodic line with many sixteenth notes. The middle staff is in alto clef and contains a similar complex melodic line. The bottom staff is in bass clef and contains a simpler bass line with quarter and eighth notes.

33a

Handwritten musical notation for measures 33-34. The system consists of three staves. The top staff is in treble clef and contains a complex melodic line with many sixteenth notes. The middle staff is in alto clef and contains a similar complex melodic line. The bottom staff is in bass clef and contains a simpler bass line with quarter and eighth notes.

36

Handwritten musical notation for measures 36-37. The system consists of three staves. The top staff is in treble clef and contains a complex melodic line with many sixteenth notes. The middle staff is in alto clef and contains a similar complex melodic line. The bottom staff is in bass clef and contains a simpler bass line with quarter and eighth notes.

38a

Handwritten musical notation for measures 38a-40. The system consists of three staves. The top staff is in treble clef, the middle in alto clef, and the bottom in bass clef. The music features complex rhythmic patterns with many sixteenth and thirty-second notes, and some slurs.

41

Handwritten musical notation for measures 41-43. The system consists of three staves. The top staff is in treble clef, the middle in alto clef, and the bottom in bass clef. The music continues with complex rhythmic patterns and slurs.

44

Handwritten musical notation for measures 44-46. The system consists of three staves. The top staff is in treble clef, the middle in alto clef, and the bottom in bass clef. The music features complex rhythmic patterns and slurs.

47

Handwritten musical notation for measures 47-49. The system consists of three staves. The top staff is in treble clef, the middle in alto clef, and the bottom in bass clef. The music features complex rhythmic patterns and slurs.

49a

Handwritten musical notation for system 49a, consisting of three staves. The top staff is in treble clef and contains a complex melodic line with many sixteenth notes. The middle staff is in treble clef and contains a similar melodic line. The bottom staff is in bass clef and contains a simpler bass line.

52

Handwritten musical notation for system 52, consisting of three staves. The top staff is in treble clef and contains a melodic line with many sixteenth notes. The middle staff is in treble clef and contains a similar melodic line. The bottom staff is in bass clef and contains a simpler bass line.

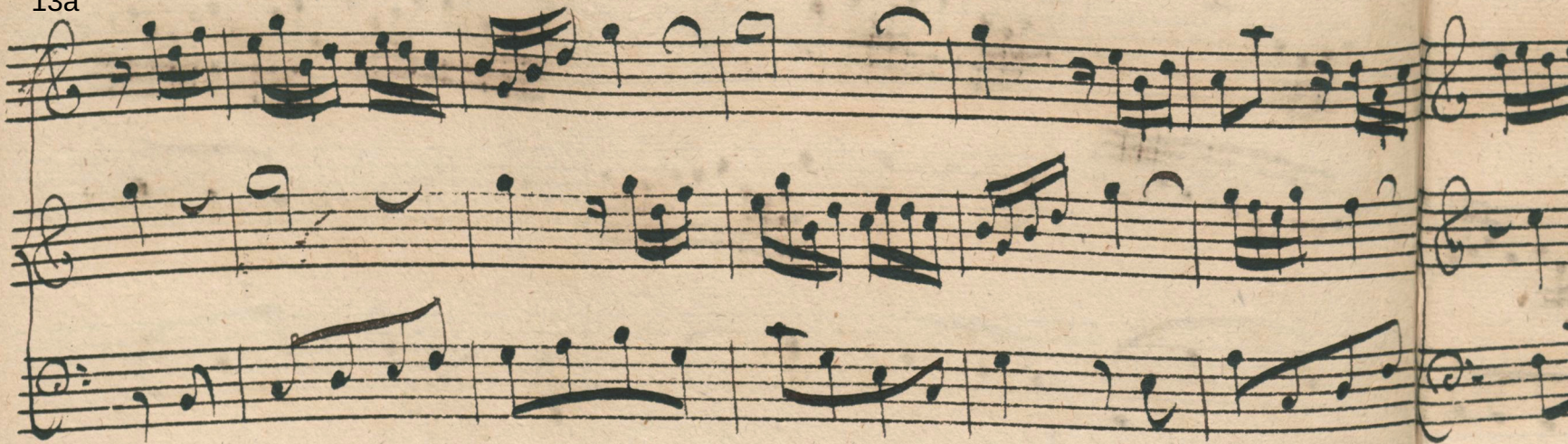
*Allegro*

7a

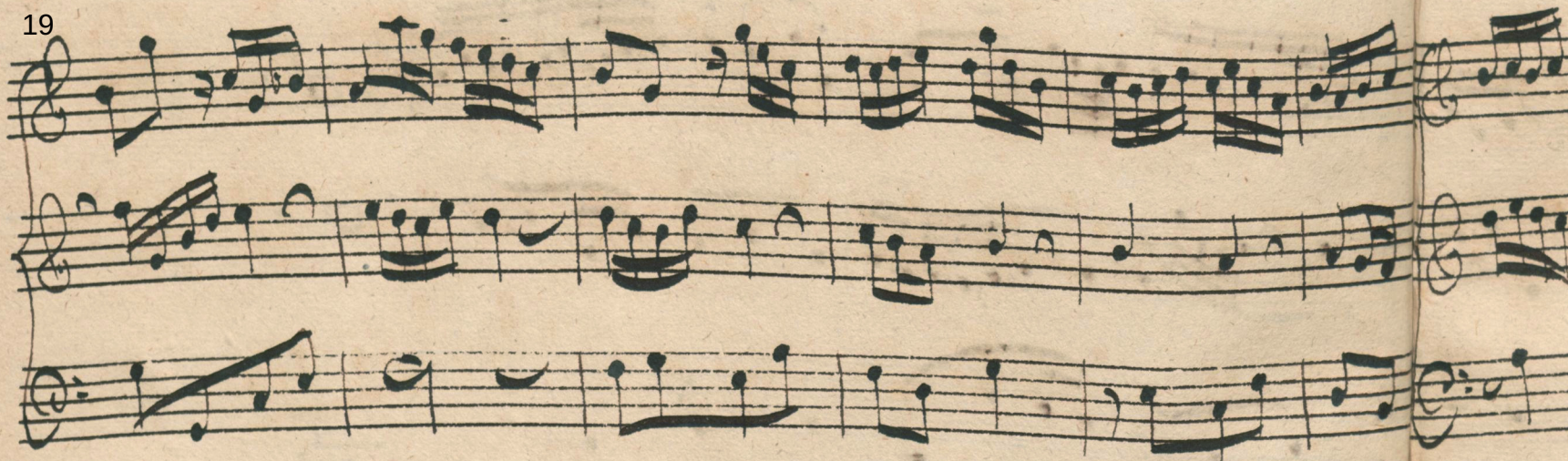
Handwritten musical notation for system 7a, consisting of three staves. The top staff is in treble clef and contains a melodic line with many sixteenth notes. The middle staff is in treble clef and contains a similar melodic line. The bottom staff is in bass clef and contains a simpler bass line.

74.

13a



19



24a



30



36

Handwritten musical notation for measures 36-41. The system consists of three staves. The top staff is in treble clef, the middle in alto clef, and the bottom in bass clef. The music features complex rhythmic patterns with many sixteenth and thirty-second notes.

42

Handwritten musical notation for measures 42-47. The system consists of three staves. The top staff is in treble clef, the middle in alto clef, and the bottom in bass clef. The music continues with intricate rhythmic figures.

48

Handwritten musical notation for measures 48-52. The system consists of three staves. The top staff is in treble clef, the middle in alto clef, and the bottom in bass clef. The notation includes various accidentals and complex rhythmic structures.

53a

Handwritten musical notation for measures 53-57. The system consists of three staves. The top staff is in treble clef, the middle in alto clef, and the bottom in bass clef. The music concludes with a final cadence.

*volti*

59

Handwritten musical notation for measures 59-64. The system consists of three staves: a treble clef staff, a treble clef staff, and a bass clef staff. The notation includes various note values, rests, and dynamic markings.

65

Handwritten musical notation for measures 65-69. The system consists of three staves: a treble clef staff, a treble clef staff, and a bass clef staff. The notation includes various note values, rests, and dynamic markings.

70a

Handwritten musical notation for measures 70-76. The system consists of three staves: a treble clef staff, a treble clef staff, and a bass clef staff. The notation includes various note values, rests, and dynamic markings.

77

Handwritten musical notation for measures 77-82. The system consists of three staves: a treble clef staff, a treble clef staff, and a bass clef staff. The notation includes various note values, rests, and dynamic markings.



83

Handwritten musical notation for measures 83-88. The system consists of three staves. The top staff is in treble clef, the middle in alto clef, and the bottom in bass clef. The music features various rhythmic values including eighth and sixteenth notes, and rests. There are several accidentals (sharps and flats) throughout the passage.

89

Handwritten musical notation for measures 89-93. The system consists of three staves. The notation continues with similar rhythmic patterns and accidentals as the previous system. A fermata is present over a note in the top staff of measure 93.

94a

Handwritten musical notation for measures 94a-99. The system consists of three staves. The music continues with complex rhythmic figures and accidentals. A fermata is present over a note in the top staff of measure 99.

100

Handwritten musical notation for measures 100-104. The system consists of three staves. The notation continues with similar rhythmic patterns and accidentals as the previous systems.

106

Handwritten musical notation for system 106, consisting of three staves. The notation includes treble and bass clefs, a key signature of one flat, and a 3/4 time signature. The music features a complex melodic line in the upper staves and a more rhythmic bass line. There are several accidentals, including flats and naturals, and some notes are marked with a '6'.

111a

Handwritten musical notation for system 111a, consisting of three staves. The notation includes treble and bass clefs, a key signature of one flat, and a 3/4 time signature. The music features a complex melodic line in the upper staves and a more rhythmic bass line. There are several accidentals, including flats and naturals, and some notes are marked with a '6'.

118

Handwritten musical notation for system 118, consisting of three staves. The notation includes treble and bass clefs, a key signature of one flat, and a 3/4 time signature. The music features a complex melodic line in the upper staves and a more rhythmic bass line. There are several accidentals, including flats and naturals, and some notes are marked with a '6'.

124a

Handwritten musical notation for system 124a, consisting of three staves. The notation includes treble and bass clefs, a key signature of one flat, and a 3/4 time signature. The music features a complex melodic line in the upper staves and a more rhythmic bass line. There are several accidentals, including flats and naturals, and some notes are marked with a '6'.

131

Handwritten musical notation for measures 131-136. The system consists of three staves. The top staff is in treble clef and contains six measures of music, including a sixteenth-note triplet. The middle staff is also in treble clef and contains six measures of music. The bottom staff is in bass clef and contains six measures of music. The notation is dense with many beamed notes.

137

Handwritten musical notation for measures 137-142. The system consists of three staves. The top staff is in treble clef and contains six measures of music, including a sixteenth-note triplet. The middle staff is also in treble clef and contains six measures of music. The bottom staff is in bass clef and contains six measures of music. The notation is dense with many beamed notes.

143

Handwritten musical notation for measures 143-148. The system consists of three staves. The top staff is in treble clef and contains six measures of music, including a sixteenth-note triplet. The middle staff is also in treble clef and contains six measures of music. The bottom staff is in bass clef and contains six measures of music. The notation is dense with many beamed notes.

149

Handwritten musical notation for measures 149-154. The system consists of three staves. The top staff is in treble clef and contains six measures of music, including a sixteenth-note triplet. The middle staff is also in treble clef and contains six measures of music. The bottom staff is in bass clef and contains six measures of music. The notation is dense with many beamed notes.

156

Handwritten musical notation for measures 156-161, consisting of three staves with treble, alto, and bass clefs. The notation includes various rhythmic values and accidentals.

162

Handwritten musical notation for measures 162-164, consisting of three staves with treble, alto, and bass clefs. The notation includes various rhythmic values and accidentals.

*Sonata a 2 Clavier & Pedal de J. S. Bach.*

Handwritten musical notation for the 'Vivace' section, measures 165-170, consisting of three staves with treble, alto, and bass clefs. The notation includes various rhythmic values and accidentals.

Handwritten musical notation for measures 171-176, consisting of three staves with treble, alto, and bass clefs. The notation includes various rhythmic values and accidentals.