

Homero Barreto.

Perceuse e interludio

Andante con Moto.

Flautas.

Oboè.

Clarinos sib

Fagotte.

Coros in fa

Pistons sib

Trombone.

Timpamo

Bateria

(sol e re.)

Triati, bombo e triang.

Harpa

harmonicos.

oharm:

1º Violino

2º "

Alto

Cello

Basso.

Handwritten musical score for the first system, featuring staves for Flute (Fl.), Clarinet (Cl.), Bassoon (B.), Trumpet (T.), Trombone (Tr.), and Percussion (Perc.). The Flute part includes a *pp* dynamic marking and a *rit.* instruction. The Clarinet part has a blue *bl.* marking. The Bassoon part has a blue *f.* marking. The Percussion part has a blue *f.* marking. The score is written in a single system with multiple measures.

Handwritten musical score for the Harp part, consisting of two staves. The notation includes rhythmic markings and notes, with a *p* dynamic marking.

Handwritten musical score for the string section, including Violin I (1^o Viol.), Violin II (2^o Viol.), Viola (Vcllo.), and Cello (Cello.). The Cello part has a blue *colla* marking and a red *divisi:* instruction. The Bass part has a *pp* dynamic marking. The score is written in a single system with multiple measures.



679.718/2-12-1985 D

Handwritten musical score for the first system, featuring a vocal line and piano accompaniment. The score includes a key signature of one sharp (F#) and a common time signature (C). The vocal line begins with a rest, followed by a melodic phrase starting in the third measure, marked with the handwritten word "oboe" in blue ink. The piano accompaniment consists of chords and rhythmic patterns. The system concludes with a dynamic marking of *pp* and a checkmark.

Handwritten musical score for the second system, consisting of a grand staff with two staves. The notation is primarily rhythmic, featuring a series of eighth and sixteenth notes with stems. The system ends with a dynamic marking of *pp*.

Handwritten musical score for the third system, featuring a vocal line and piano accompaniment. The piano part includes several triplet markings. The system concludes with a dynamic marking of *pp* and the number "24" written in the right margin.



Handwritten musical score for a piano piece. The score consists of five staves. The first staff contains a melodic line with a dynamic marking of *f* and a measure number of 82. The second staff contains a similar melodic line. The third and fourth staves contain harmonic accompaniment with dynamic markings of *cresc.* and *cresc.*. The fifth staff contains a bass line with dynamic markings of *mf* and *p*. The score is written in a key signature of one flat and a common time signature.

A set of empty musical staves, likely representing a section of the score that is not present in this manuscript.

Handwritten musical score for a piano piece, continuing from the first system. The score consists of five staves. The first staff contains a melodic line with a dynamic marking of *f* and a measure number of 83. The second staff contains a similar melodic line. The third and fourth staves contain harmonic accompaniment with dynamic markings of *cresc.* and *cresc.*. The fifth staff contains a bass line with dynamic markings of *f* and *p*. The score is written in a key signature of one flat and a common time signature.

crese f.

Piu animato.

Handwritten musical score for the first system, featuring staves for Flute (Fl.), Oboe (Ob.), Clarinet (Cl.), Bassoon (Fag.), Horn (Corn.), Trumpet (Tpt.), Trombone (Tromb.), Cymbal (Cym.), and Bass Drum (Batt.). The score includes dynamic markings such as *crese. f.* and *f.*, and performance instructions like *Piu animato.* The music is written in a key with one sharp (F#) and a common time signature (C).

Empty musical staves for the second system, including a staff for Bassoon (Fag.) on the left.

f.

Piu Animato.

Handwritten musical score for the second system, featuring staves for Violin I (Vcl. I), Violin II (Vcl. II), Viola (Vcllo), Cello (Cello), and Bass (Bass.). The score includes dynamic markings such as *f.* and *f.*, and performance instructions like *Piu Animato.* The music is written in a key with one sharp (F#) and a common time signature (C).



cresc. molto. **f.** **ff.** *Agitato.*

cresc. molto.

cresc. molto.

Piatti come majestà

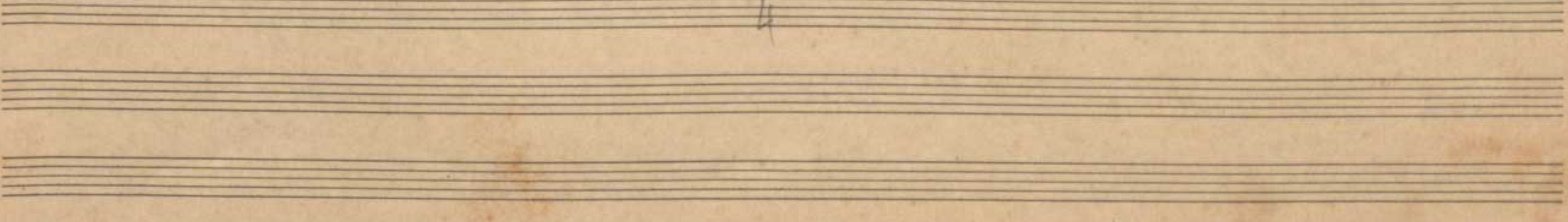
Bombon.

f. **ff.** *Agitato.*

f. **ff.** *Agitato.*

divis.

cresc. molto.



Handwritten musical score for woodwinds and strings. The staves are labeled on the left: Fl., Ob., Cl., Fag., Bass., Clarinet, Tromba, Timpani, and Batt. The score includes dynamic markings such as *f*, *pp*, and *f.p*. A red annotation *Rall:* is written above the Clarinet staff. The music features various rhythmic patterns and melodic lines across the instruments.

Clarinet

Handwritten musical score for strings and solo violin. The staves are labeled on the left: 1^a Viol., 2^a Viol., Viola, Violoncello, and Bass. A red annotation *Sola Violino* is written above the first violin staff, with *Rall* and *pp* markings. The second violin staff has the red annotation *doloroso e vibrante*. The Viola and Violoncello staves have *Pizz* markings. The Bass staff has a *Pizz* marking. The score includes dynamic markings such as *pp* and *f*.

Handwritten musical score for woodwinds and strings. The staves are labeled: Fl., Ob., Cl., Fag., Bass., Picc., Tromb., Tympani, and Batt. The score includes dynamic markings such as *f*, *pp*, and *f.p*. A red annotation *Rall:* is present in the middle section.

Flauto

Handwritten musical score for strings. The staves are labeled: 1^o Viol., 2^o Viol., Viola, Violoncello, and Bassi. The score includes dynamic markings such as *pp* and *pizz*. A red annotation *Sola Violino* is written above the first violin staff, and *doloroso e vibrante* is written below it.

Tempo 1º

p. grave.

Handwritten musical score for the first system. It consists of ten staves. The top staff begins with a treble clef and the tempo marking 'Tempo 1º'. The first measure is marked 'p.' and 'grave.'. The music features various note values, including eighth and sixteenth notes, and rests. Dynamic markings such as 'sf.' (sforzando) are used throughout. A 'dim.' (diminuendo) marking is present in the second measure. The bottom staff contains a series of rhythmic symbols, possibly indicating fingerings or specific performance techniques.

a appoggiatura é do triângulo, e o mi do prato, ambas batidas com o ferrinho muito levemente.

A section of handwritten musical notation consisting of two staves. The top staff has a treble clef and contains several measures of rests. The bottom staff also contains rests. This section appears to be a continuation or a specific part of the piece.

Tempo 1º.

Handwritten musical score for the second system. It consists of ten staves. The top staff begins with a treble clef and the tempo marking 'Tempo 1º.'. The music features various note values, including eighth and sixteenth notes, and rests. Dynamic markings such as 'sf.' (sforzando) and 'p.' (piano) are used throughout. The notation includes slurs and accents.

Fl. 

Ob. 

Cl. 

Fag. 

Coro. 

Pist. 

Tromb. 

Tymp. 

Bat. 

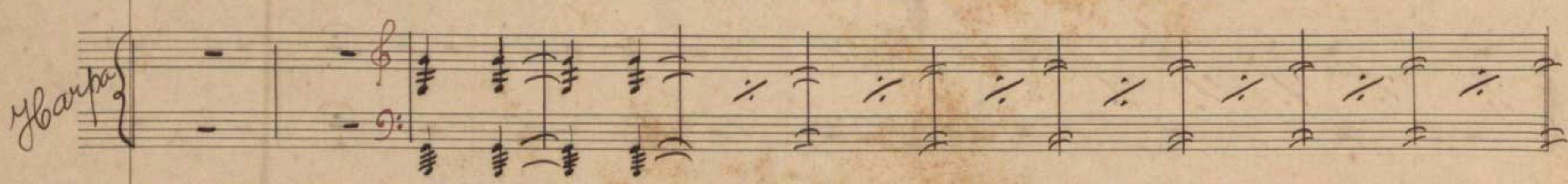
2= solo.

2= solo.

Triang. cola maceta.

Sordina.

Piati cola maceta.

Harp 

1^o Viol. 

2^o " 

Alto 

Cellos 

Bass 

p

solo mf.

Pizz.

Handwritten musical score for the first system, consisting of seven staves. The notation includes various notes, rests, and dynamic markings such as *f*, *p*, and *pp*. A red bracket spans across the top of the first three staves. The word "Solo" is written in red above the first staff. The system concludes with a double bar line.

Handwritten musical score for the second system, consisting of two staves. The notation includes notes and rests. A red bracket is present above the first staff. The text "Solo" and "Barrocos" are written in red above the first staff. The system concludes with a double bar line.

Handwritten musical score for the third system, consisting of four staves. The notation includes notes, rests, and dynamic markings such as *f*, *p*, and *pp*. A red bracket spans across the top of the first two staves. The word "Solo" is written in red above the first staff. The system concludes with a double bar line.



671.718/85D