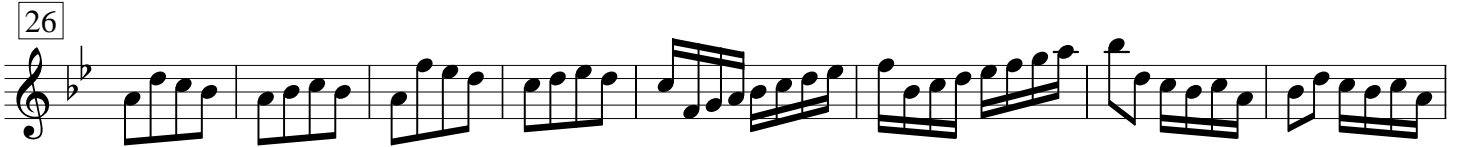
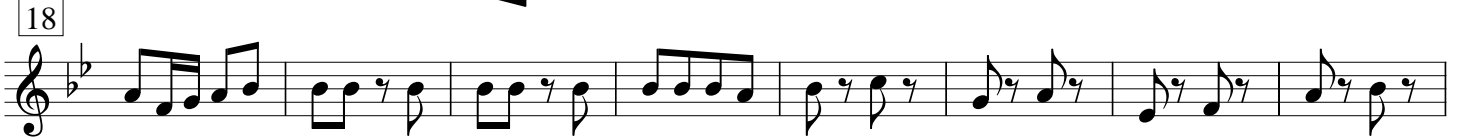
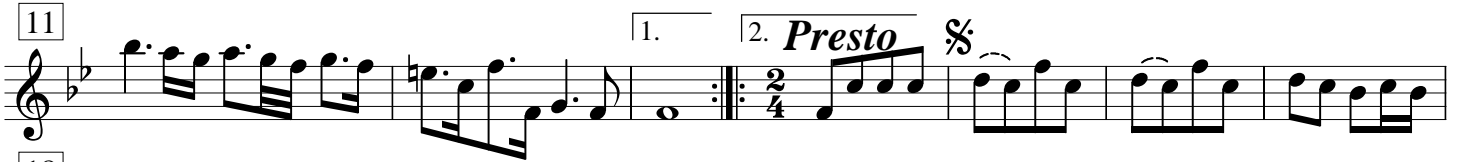


# Suite B-Dur (Nr. 2)

## Ouverture

J. A. Reichenauer

[Adagio]



98 **Tutti**

114

122

130 **Trio**

138 **Tutti**

146 **finis**

153 **[Presto]**  $\frac{2}{4}$

## [Bourrée]

**[Allegro]**

8

15 **Trio** **Tutti**

**finis**

25 **7**

**da capo**

# Aria *Andante*

7

14

27

46

51

24

finis

da capo

# Gavotte

*f*

5

9

13

Trio

18 **Tutti**

23

29 **Trio** **Tutti**

35

## Menuet

9

**finis**

18

27

**Duetto tacet / Menuet da capo**

**da capo**