

G. Verdi

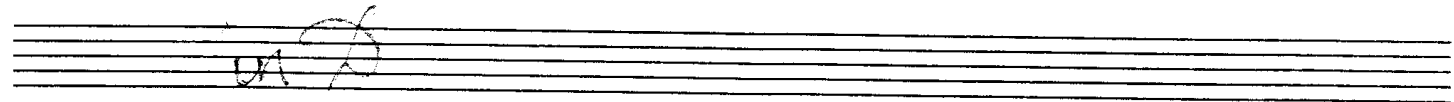
Nabucodonosor

Sinfonia

in D

Andante

Handwritten musical score for Tromba I, G. Verdi Nabucodonosor Sinfonia. The score is written on ten staves. It begins with a treble clef, a key signature of one flat (B-flat), and a common time signature (C). The tempo is marked 'Andante'. The score includes various musical notations such as notes, rests, and dynamic markings like 'ss' (sforzando) and 'p' (piano). There are also performance instructions like 'Allegro' and 'Andantino'. The piece concludes with a double bar line and the number '15' written below the staff.



A

SS marcato

PP

SS

Solo

B

p

p

Allegro

p cresc. rinforz.

C

SS

64 2

Handwritten musical score on ten staves. The notation includes various note values, rests, and dynamic markings such as 'p' and 'cresc.'. There are also handwritten annotations like 'E', '55', '3', and '6' above the notes. The score is written in a single system across ten staves.

in D

A handwritten musical score for guitar, titled "in D". The score is written on ten staves of five-line music paper. The first staff contains the title "in D" written in cursive. The second staff begins with a treble clef and a key signature of one sharp (F#), indicating the key of D major. The music is written in a single melodic line, featuring a variety of note values including quarter, eighth, and sixteenth notes, as well as rests. There are several dynamic markings, including accents (^) and a piano (p) marking. A repeat sign (//) is used in the second staff. A box containing the letter "C" is placed above a note in the third staff. A box containing the number "7" is placed above a note in the seventh staff. The score concludes with a double bar line and repeat dots at the end of the tenth staff.

Più mosso *ss* *I*

Handwritten musical score for a single staff. The score consists of 10 staves of music. The first staff begins with the tempo marking "Più mosso" and dynamic marking "ss", followed by a first ending bracket "I". The music is written in a single treble clef. The notation includes various note values, rests, and dynamic markings such as "pp" and "c". There are also some handwritten annotations like "1-8" and "z esc."

Coro di schiavi Ebrei

in E

Largo C 5 SS

pp mp Cantabile 16

mf 22 3

3

p

28 3

3 3 3

3 3 pp

Protesta e Finales 5

p 3 SS

3 3

30 *f* *Andante mosso* 10

31

ritorna

32 *pietra*

33

34

Fine dell' Atto III