

Basfo.

*Drum*

*part*

4<sup>te</sup> Part

1.

# Symfonia no. 1. C - moll.

Johan Halvorsen.

*Contrabasso*

*All.: non troppo*

I. *1.* *p*

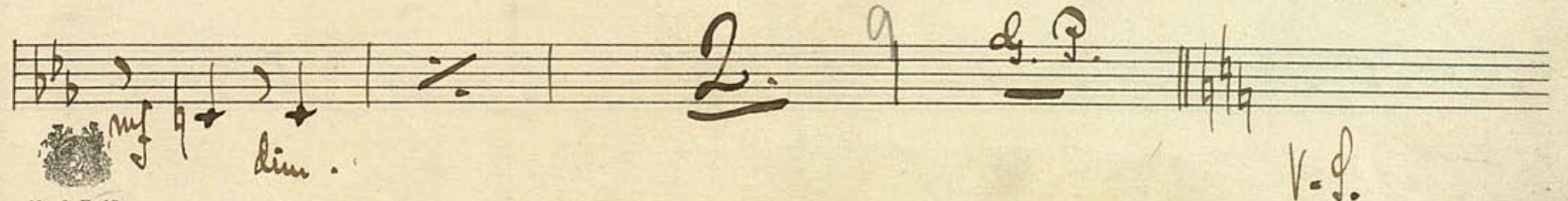
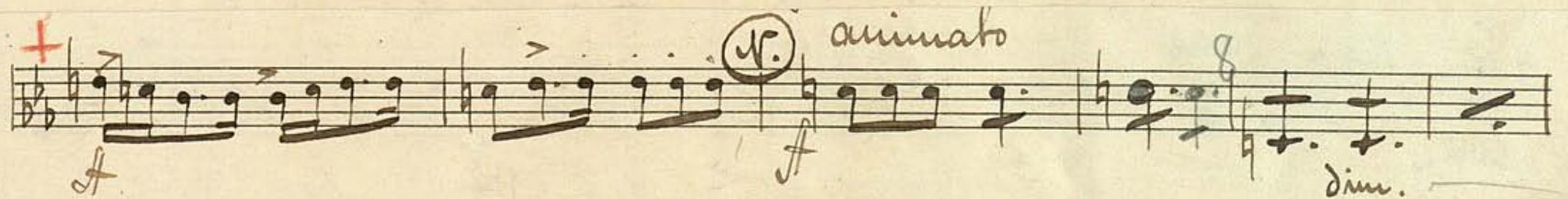
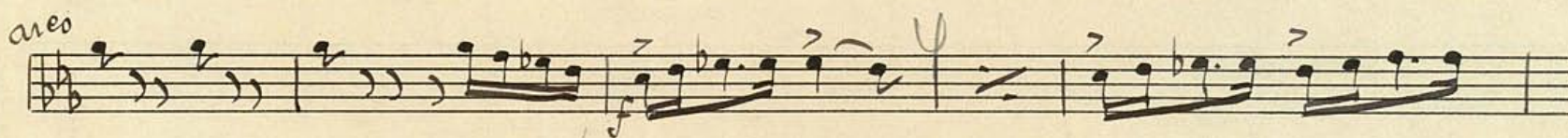
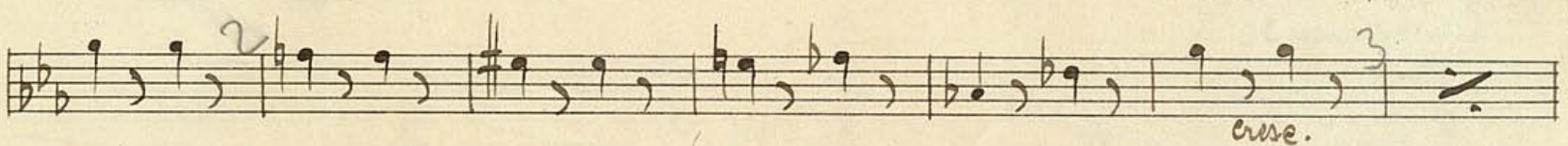
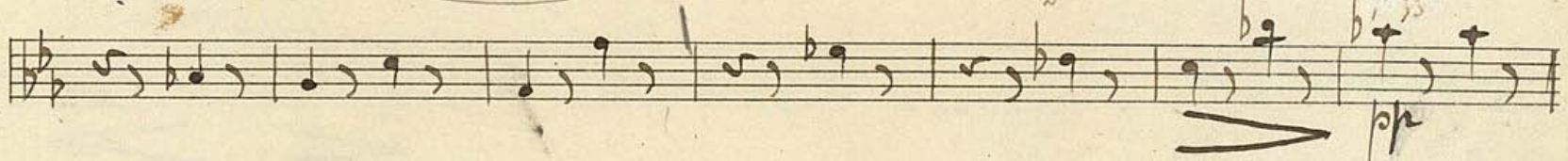
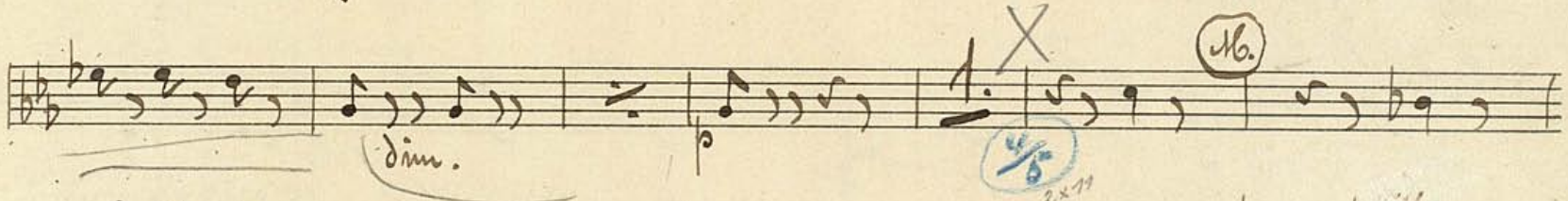




Handwritten musical score on aged paper, consisting of ten staves of music. The score includes various tempo and dynamic markings:

- Staff 1:** *cresc.*, *f*, *(rit)*
- Staff 2:** *p*, *pp*, *Poco meno mosso*
- Staff 3:** *f*, *p*, *f*, *dim.*
- Staff 4:** *arco*, *pp*, *ppp*
- Staff 5:** *agitato.*
- Staff 6:** *crescendo*, *f*, *ff*
- Staff 7:** *ff*
- Staff 8:** *ff*, *cresc.*, *ff*
- Staff 9:** *a tempo*, *a tempo*

The music features complex rhythmic patterns, including triplets and sixteenth-note runs. There are several circled numbers (3, 7, 12, 3, 4, 5) and other annotations like 'p' and 'pp' throughout the score.



Meno mosso.

10

Handwritten musical score for a piece titled "Meno mosso." The score consists of 12 staves of music. It includes various musical notations such as notes, rests, and dynamic markings. Key markings include "mf", "f", "p", "cresc.", "dim.", "poco rit.", "largamente.", "piu mosso", and "accl.". There are also circled numbers 1, 2, 3, 4, 8, and 9, and a circled "P." marking. The score ends with a double bar line and a 6/7 time signature.

Basso.

7

II.

*1. linea bassa!*

*Andante.*  $\text{b}^{\flat}\text{b}^{\flat} \frac{3}{8}$  7.  $p$   $mf$

$mf$

3. poco accel. e agitato.  $f$   $ff$  dim. molto

rit. a tempo 4. un poco piu mosso.  $p$

Largo. in. klagend. 5.  $pp$   $v. d.$

3+1=22

v. d.



5.

Ob. *mf* *5* *piss* *poco accel.* *a tempo, e animato.*

*rit.* *8.* *Piu mosso.* *mf*

*9.* *a tempo.*

*10* *dim.*

*11* *rit.* *12.* *Piu mosso* *mf* *cresc. e string.*

*a tempo* *13.* *Piu mosso.* *a tempo, ma un poco animato* *cresc. e string.*

*14.* *dim. molto.*

*15.* *p* *rit. e dim.*



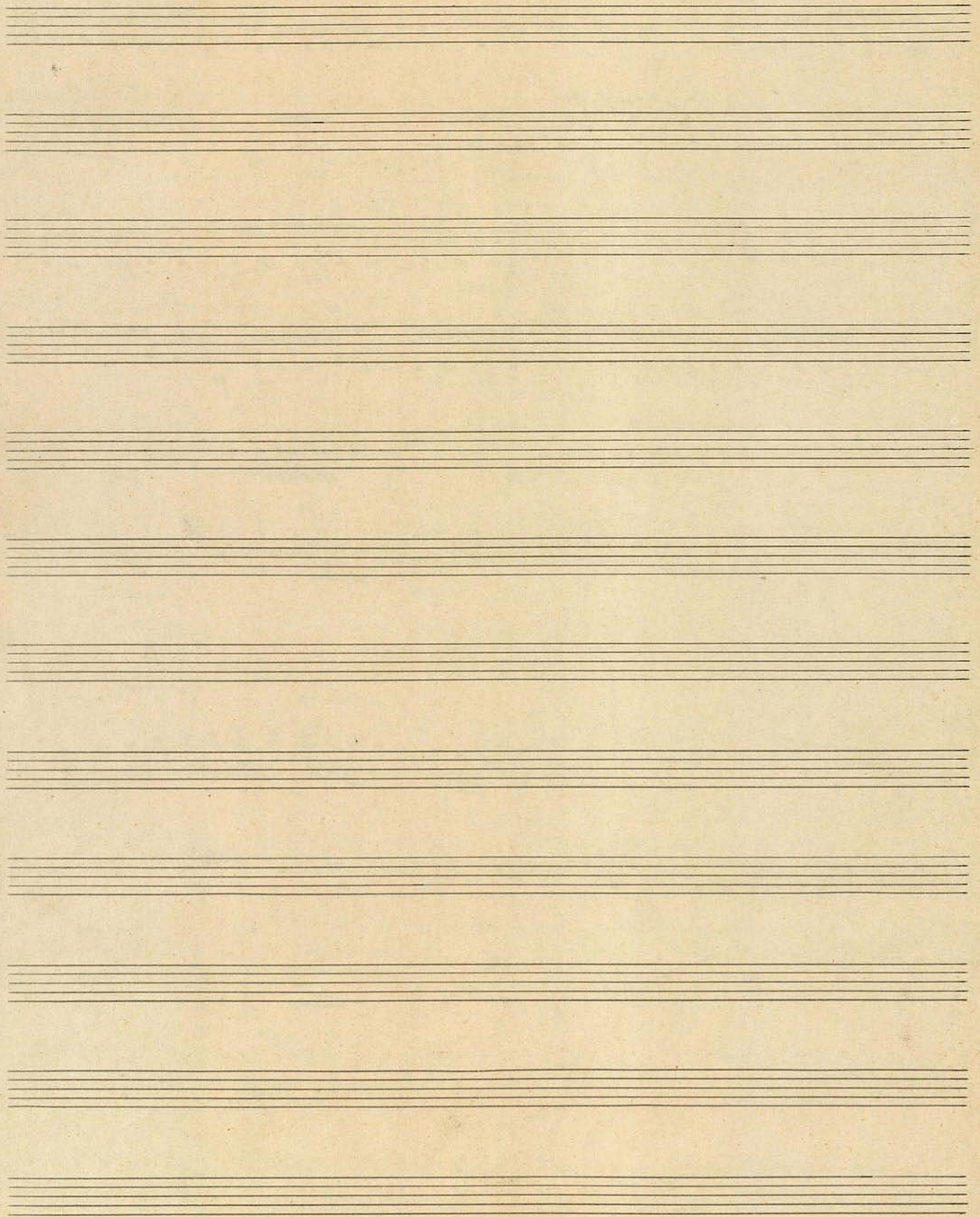
Handwritten musical score with multiple staves. The score includes various musical notations such as notes, rests, and dynamic markings. Key annotations include:

- Staff 1: *pp*, *piu* (7), *a tempo*, *mp*
- Staff 2: *arco*, *mf*, *pp*, *pp*, *Molto piu mosso.* (K), *11.*
- Staff 3: *3/8*, *pp*, *pp*, *dolciss.*, *tranq.*
- Staff 4: *p*
- Staff 5: *cresc. e poco accel.*
- Staff 6: *16.*, *Piu mosso*, *cresc.*
- Staff 7: *ff*, *ff*, *pesante.* (1)
- Staff 8: *17.*, *a tempo*, *ff*
- Staff 9: *cresc.*, *ff*, *dim.*, *p*
- Staff 10: *18.*, *tranq.*, *Adagio.* (2), *div.*, *pp*, *morendo.*

(\*) Ein Bass das tiefe E in Es einstimmen.)

\*) Einen Bass das tiefe E in Es einstimmen

Er dette ikke rigtigere? nodeskivern sand synligvis komponeret



pesante **16.** a tempo, molto sost.

tranquillo

**2.** **3.** **2.** **Adagio.** **dim.** **lunga**

\* Ein Bass umsk. tiefe E in Ess. **pp** **morendo**

**III.**

~~Andante~~ **Lento**

**f** **p** **dim.** **All.<sup>o</sup> con spirito** **Fag.** **mf**

**f** **Viol. I.** **f** **B.** **mf**

**pp** **pizz** **f** **arco** **mf**

**I.** **pizz** **II.** **pizz** **f** **arco** **mf** **lunga.**

10.

allegretto

(d.) ~~Steno tempo.~~ animando.

2/4 10. *pizz* *f*

(2.) *arco* *p*

(3.) *Fin mosso* *cresc. e accel*

*Fin mosso* *sf*

*Fin mosso* *sf*

*dim. rit* *p* *pp*

(F.) *Meno mosso. pizz* *dim. e rit*

2 *Tempo I.* *Cello* *f*

(d.) *f* *arco* *dis e.*

4

*pizz* *f* *p*

(8b.) *arco* *f* *9.* *6*



Handwritten musical notation on a single staff. It begins with a treble clef and a key signature of two flats (B-flat and E-flat). The music starts with a dynamic marking of *f* (forte). There are some handwritten annotations above the staff, including a circled '3' and some arrows. The piece concludes with the instruction *cresc.* (crescendo).

Handwritten musical notation on a single staff. It continues with the same key signature. A circled '13.' is written above the staff. The music features various dynamics, including *f* and *mf* (mezzo-forte). There are also some handwritten notes and arrows.

Handwritten musical notation on a single staff. It begins with a circled '5' above the staff. The music includes dynamics such as *mf* and *gva* (grave). There are some handwritten notes and arrows.

Handwritten musical notation on a single staff. It features a wavy line above the staff, possibly indicating a slur or a specific performance instruction. Dynamics include *sf* (sforzando) and *mf*. There are some handwritten notes and arrows.

Handwritten musical notation on a single staff. It includes dynamics like *pp* (pianissimo) and *f*. There are some handwritten notes and arrows.

Handwritten musical notation on a single staff. It starts with the instruction *arco* (arco) and a dynamic marking of *f*. There are some handwritten notes and arrows.

Handwritten musical notation on a single staff. It includes the instruction *poco rit.* (poco ritardando) and a circled '16.' above the staff. The music concludes with the instruction *Mu poco meno mosso.* (Molto poco meno mosso).

Handwritten musical notation on a single staff. It includes a circled '10' above the staff and a dynamic marking of *f*. There are some handwritten notes and arrows.

Handwritten musical notation on a single staff. It includes the instruction *rit. dir.* (ritardando, then diritissimo) and the instruction *tranquillo*. There are some handwritten notes and arrows.

Handwritten musical notation on a single staff. It includes a circled '12' above the staff and dynamics like *mf* and *p*. There are some handwritten notes and arrows.

Handwritten musical notation on a single staff. It includes the instruction *Molto tranqu.* (Molto tranquillo) and the instruction *poco a poco*. There are some handwritten notes and arrows.

Handwritten musical notation on a single staff. It includes the instruction *Tempo I* and a dynamic marking of *mf*. There are some handwritten notes and arrows.



14.

3/8

Cello.

arco<sub>3</sub>



*animando.*

Handwritten musical notation on a single staff. It begins with a treble clef and a key signature of one sharp (F#). The notes are quarter notes, with a *ff* dynamic marking. A *dim.* marking is placed above the staff, and a *ff* marking is placed below it. The staff ends with a fermata.

*largamente.*

Handwritten musical notation on a single staff. It begins with a treble clef and a key signature of one sharp (F#). The notes are quarter notes, with a *piu f* dynamic marking. A *rit.* marking is placed above the staff, and a *ff* marking is placed below it. The staff ends with a fermata.

*a tempo*

Handwritten musical notation on a single staff. It begins with a treble clef and a key signature of one sharp (F#). The notes are quarter notes, with a *ff* dynamic marking. A *rit.* marking is placed above the staff, and a *ff* marking is placed below it. The staff ends with a fermata.

*accol e erse.*

*Allegro molto*

Handwritten musical notation on a single staff. It begins with a treble clef and a key signature of one sharp (F#). The notes are quarter notes, with a *mf* dynamic marking. A *rit.* marking is placed above the staff, and a *ff* marking is placed below it. The staff ends with a fermata.

Handwritten musical notation on a single staff. It begins with a treble clef and a key signature of one sharp (F#). The notes are quarter notes, with a *mf* dynamic marking. A *rit.* marking is placed above the staff, and a *ff* marking is placed below it. The staff ends with a fermata.

*f sempre.*

Handwritten musical notation on a single staff. It begins with a treble clef and a key signature of one sharp (F#). The notes are quarter notes, with a *f* dynamic marking. A *rit.* marking is placed above the staff, and a *ff* marking is placed below it. The staff ends with a fermata.

Handwritten musical notation on a single staff. It begins with a treble clef and a key signature of one sharp (F#). The notes are quarter notes, with a *ff* dynamic marking. A *rit.* marking is placed above the staff, and a *ff* marking is placed below it. The staff ends with a fermata.

Handwritten musical notation on a single staff. It begins with a treble clef and a key signature of one sharp (F#). The notes are quarter notes, with a *ff* dynamic marking. A *rit.* marking is placed above the staff, and a *ff* marking is placed below it. The staff ends with a fermata.

Handwritten musical notation on a single staff. It begins with a treble clef and a key signature of one sharp (F#). The notes are quarter notes, with a *ff* dynamic marking. A *rit.* marking is placed above the staff, and a *ff* marking is placed below it. The staff ends with a fermata.

Handwritten musical notation on a single staff. It begins with a treble clef and a key signature of one sharp (F#). The notes are quarter notes, with a *ff* dynamic marking. A *rit.* marking is placed above the staff, and a *ff* marking is placed below it. The staff ends with a fermata.

Handwritten musical notation on a single staff. It begins with a treble clef and a key signature of one sharp (F#). The notes are quarter notes, with a *ff* dynamic marking. A *rit.* marking is placed above the staff, and a *ff* marking is placed below it. The staff ends with a fermata.

#

*Fine.*

14/15  
2x12

